

CLASS A OFFICE SPACES

375 S County Road, Palm Beach FL 33480



Lease Rate: \$50.00/sf NNN

Jeremiah Baron
& CO.

Commercial Real Estate, LLC

49 SW Flagler Ave. Suite 301
Stuart FL, 34994
www.commercialrealestatellc.com

Josh Johnson
772.286.5744 Office
772.631.5805 Mobile
jjohnson@commercialrealestatellc.com

PROPERTY OVERVIEW

- Modern Class A second floor office spaces located in the heart of the Palm Beach business district.
- The beautiful Mediterranean style building had a number of site improvements done inside and out.
- All available spaces feature individual suites as well as a reception area, conference room, restrooms, and elevator access.
- Suite 220 features multiple office spaces that can be leased to one tenant or option to lease individual suites at varying rates (see floor plan for details)
- In close proximity to the Town Hall building, the Palm Beach International Airport, Downtown West Palm Beach, CityPlace, and the I-95 access ramp.



LEASE RATE	\$50.00/sf NNN
UNITS AVAILABLE	
SUITE 201 (VACANT)	1,237 sf
SUITE 205 (AVAILABLE 1/1/21)	1,295 sf
SUITE 220	4,352 sf (individual offices available at rent indicated in floor plan)
BUILDING TYPE	Office
ACREAGE	0.55 AC
FRONTAGE	+/- 213'
TRAFFIC COUNT	13,000 ADT
YEAR BUILT	1985
PARKING RATIO	4.70 / 1,000 sf
ZONING	CTS - Commercial Town Serving
LAND USE	Commercial
PARCEL ID	50-43-43-23-05-009-0010

NO WARRANTY OR REPRESENTATION, EXPRESS OR IMPLIED, IS MADE AS TO THE ACCURACY OF THE INFORMATION CONTAINED HEREIN, AND THE SAME IS SUBMITTED SUBJECT TO ERRORS, OMISSIONS, CHANGE OF PRICE, RENTAL OR OTHER CONDITIONS, PRIOR SALE, LEASE OR FINANCING, OR WITHDRAWAL WITHOUT NOTICE, AND OF ANY SPECIAL LISTING CONDITIONS IMPOSED BY OUR PRINCIPALS NO WARRANTIES OR REPRESENTATIONS ARE MADE AS TO THE CONDITION OF THE PROPERTY OR ANY HAZARDS CONTAINED THEREIN ARE ANY TO BE IMPLIED.

**Jeremiah Baron
& CO.**

Commercial Real Estate, LLC

49 SW Flagler Ave. Suite 301
Stuart FL, 34994
www.commercialrealestatellc.com

Josh Johnson
772.286.5744 Office
772.631.5805 Mobile
jjohnson@commercialrealestatellc.com

ADDITIONAL PHOTOS



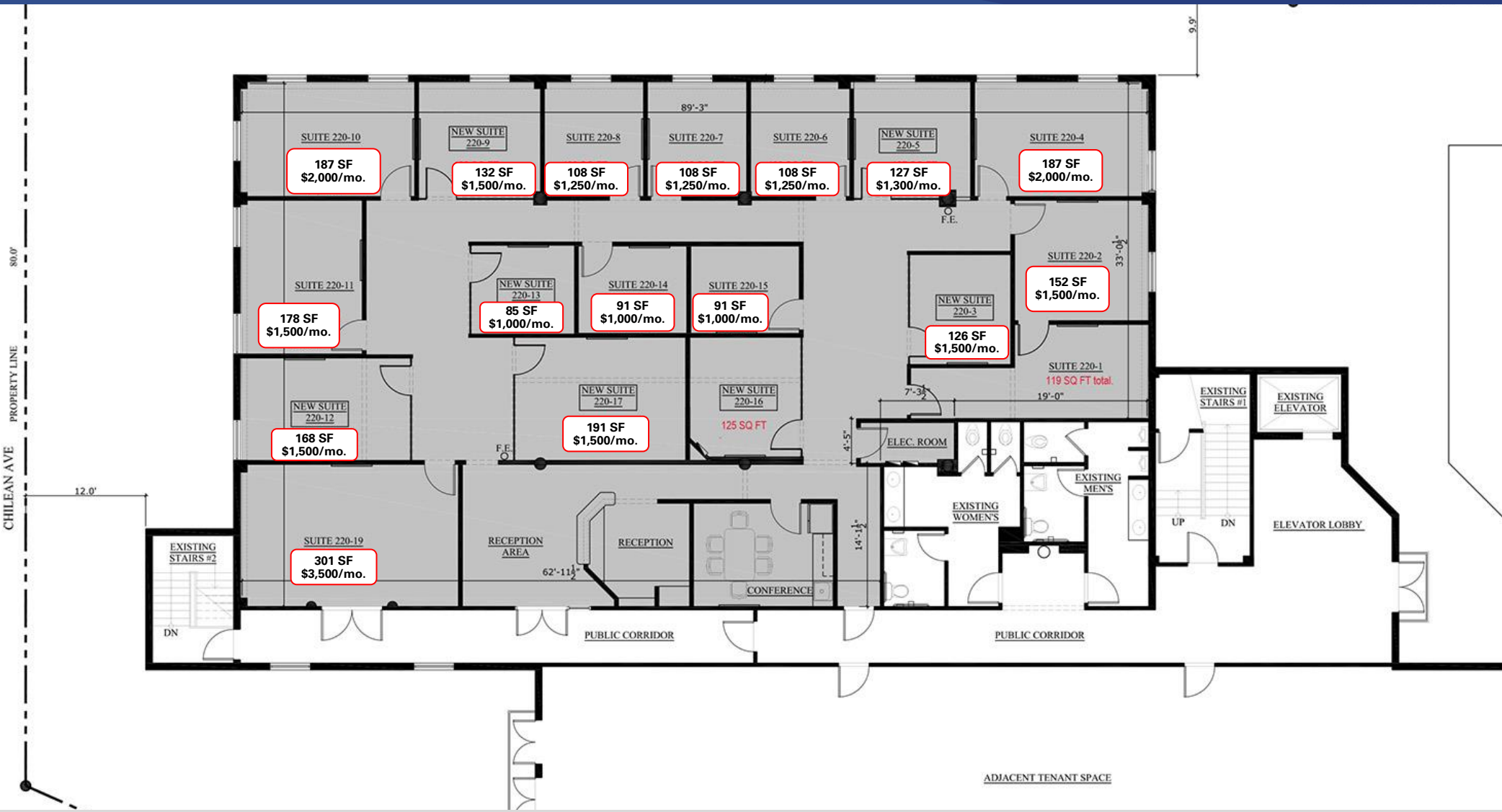
Jeremiah Baron
& CO.

Commercial Real Estate, LLC

49 SW Flagler Ave. Suite 301
Stuart FL, 34994
www.commercialrealestatellc.com

Josh Johnson
772.286.5744 Office
772.631.5805 Mobile
jjohnson@commercialrealestatellc.com

SUITE 220 FLOOR PLAN



**Jeremiah Baron
& CO.**

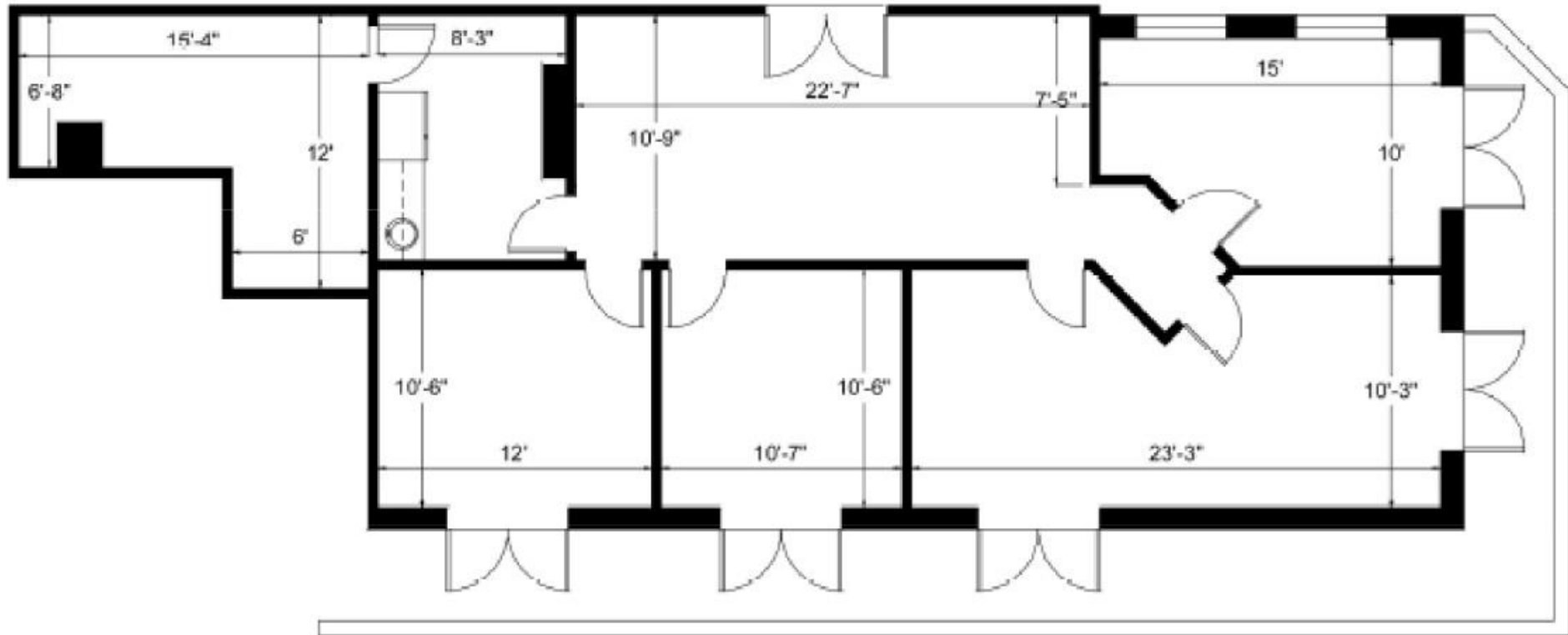
Commercial Real Estate, LLC

49 SW Flagler Ave. Suite 301
Stuart FL, 34994
www.commercialrealestatellc.com

Josh Johnson
772.286.5744 Office
772.631.5805 Mobile
jjohnson@commercialrealestatellc.com

SUITE 201 FLOOR PLAN

SUITE 201



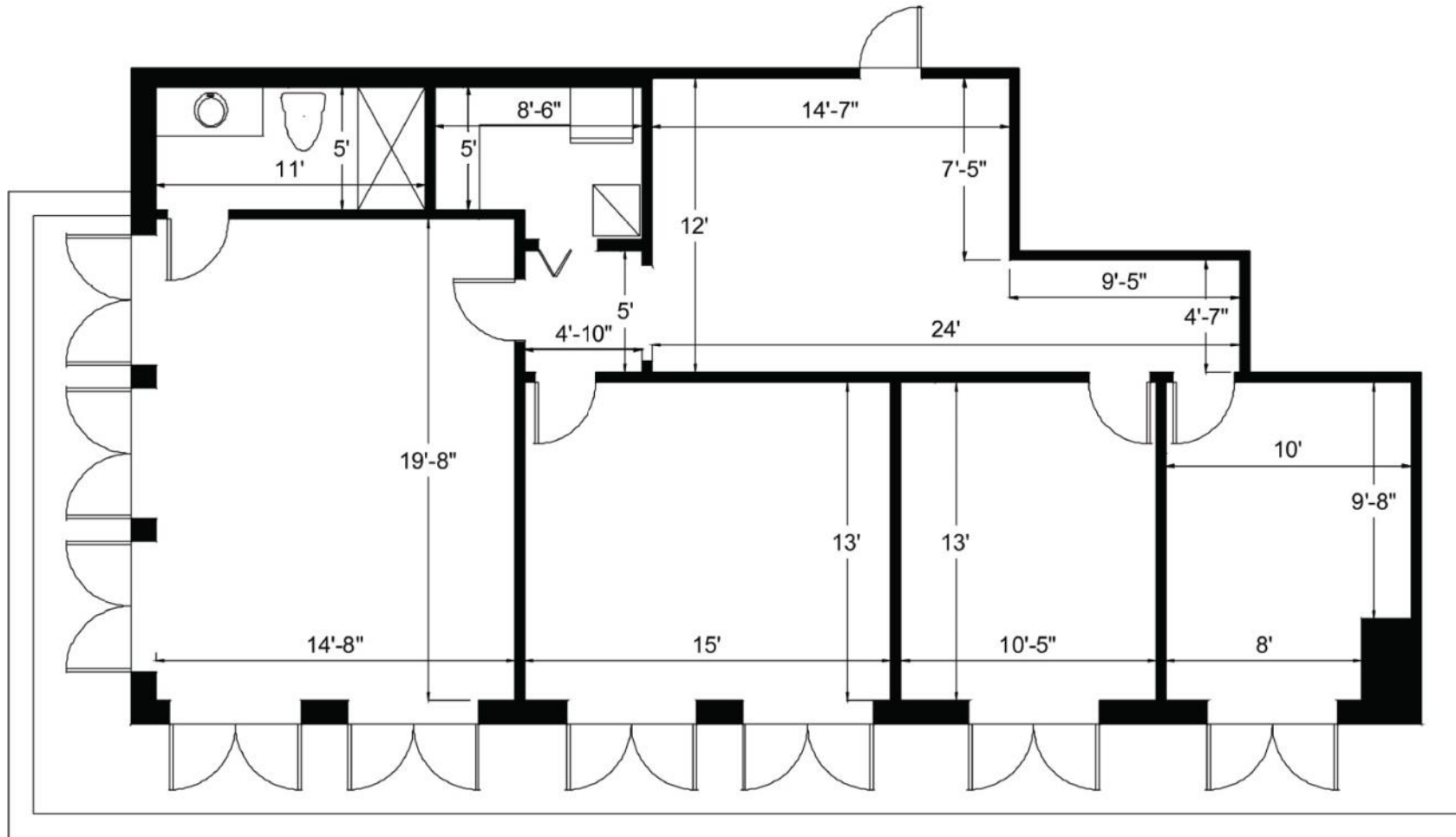
Jeremiah Baron
& CO.

Commercial Real Estate, LLC

49 SW Flagler Ave. Suite 301
Stuart FL, 34994
www.commercialrealestatellc.com

Josh Johnson
772.286.5744 Office
772.631.5805 Mobile
jjohnson@commercialrealestatellc.com

SUITE 205 FLOOR PLAN



SUITE 205

Jeremiah Baron
& CO.

Commercial Real Estate, LLC

49 SW Flagler Ave. Suite 301
Stuart FL, 34994
www.commercialrealestatellc.com

Josh Johnson
772.286.5744 Office
772.631.5805 Mobile
jjohnson@commercialrealestatellc.com

DEMOGRAPHICS

2020 Population Estimate		2020 Average Household Income		Average Age	
1 Mile	3,266	1 Mile	\$136,849	1 Mile	47.20
3 Mile	49,265	3 Mile	\$80,948	3 Mile	40.40
5 Mile	130,490	5 Mile	\$75,696	5 Mile	39.10

2025 Population Projection		2020 Median Household Income		Median Age	
1 Mile	3,359	1 Mile	\$107,861	1 Mile	49.40
3 Mile	51,755	3 Mile	\$51,233	3 Mile	39.50
5 Mile	137,275	5 Mile	\$50,610	5 Mile	38.30

Jeremiah Baron
& CO.

Commercial Real Estate, LLC

49 SW Flagler Ave. Suite 301
Stuart FL, 34994
www.commercialrealestatellc.com

Josh Johnson
772.286.5744 Office
772.631.5805 Mobile
jjohnson@commercialrealestatellc.com

ZONING INFORMATION

Sec. 134-1107. - Permitted uses.

(a) Enumeration; maximum gross leasable area. The permitted uses in the C-TS town-serving commercial district, with a maximum of 3,000 square feet gross leasable area (GLA), are as follows:

- (1) Retail and service establishments, such as restaurants, excluding formula restaurants as defined in section 134-2 and bars/lounges, hardware stores, food stores, clothing stores, drugstores, barbershops beauty salons and jewelry stores.
- (2) Offices, executive office suites, professional services, business services, excluding veterinarian offices, and securities and financial brokerage and trust companies above the first floor.
- (3) Offices, professional services, business services and securities and financial brokerage and trust companies in the 200 block of Peruvian Avenue and Bradley Place.
- (4) Nonprofit cultural centers.
- (5) Professional and studio type schools.
- (6) Storage facility related to a permitted or special exception use in the district provided said use meets all additional conditions in section 134-1760 of this chapter.
- (7) Essential services.
- (8) Public parks.
- (9) Residence(s) above the first floor.

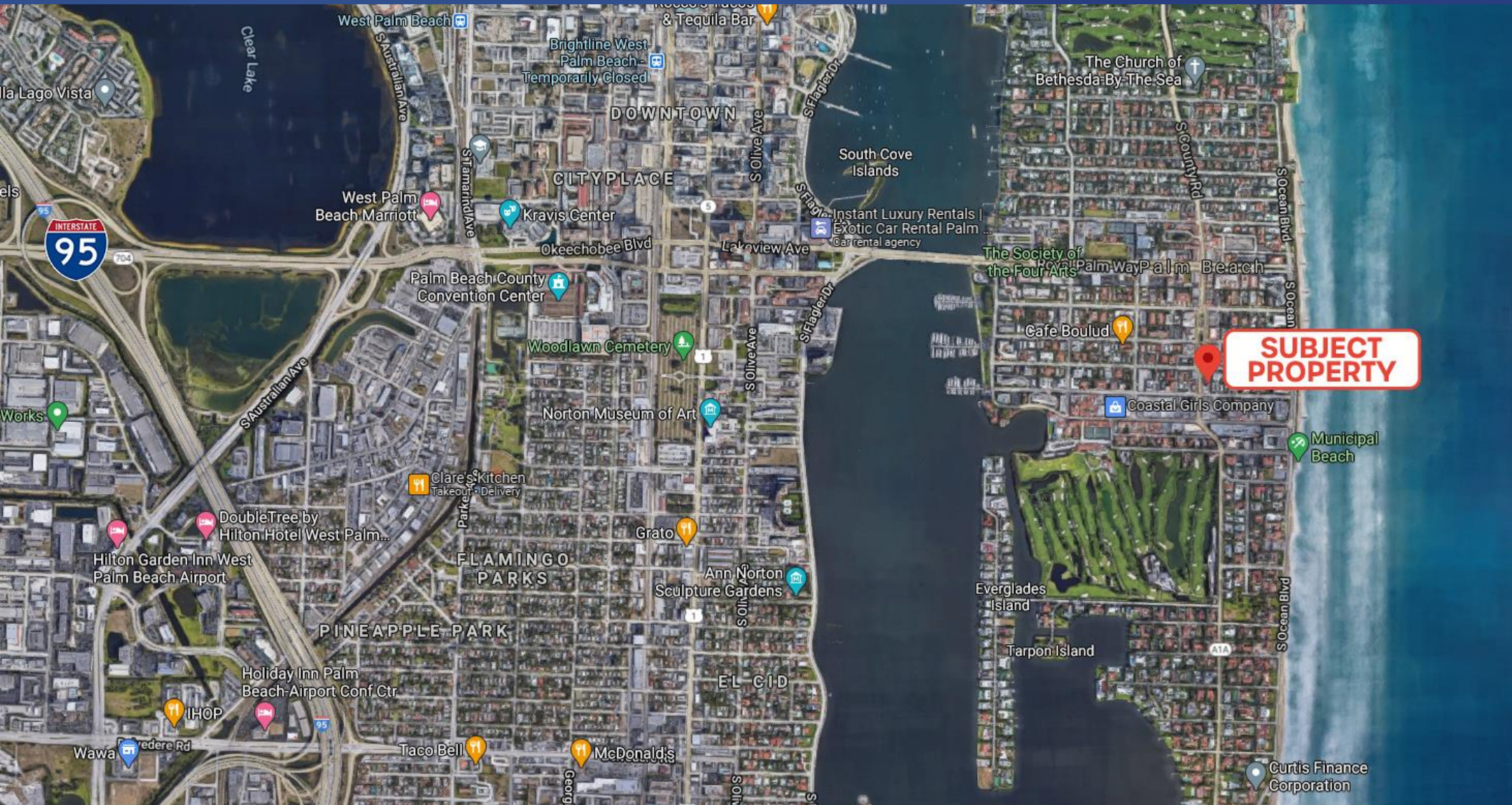
Jeremiah Baron
& CO.

Commercial Real Estate, LLC

49 SW Flagler Ave. Suite 301
Stuart FL, 34994
www.commercialrealestatellc.com

Josh Johnson
772.286.5744 Office
772.631.5805 Mobile
jjohnson@commercialrealestatellc.com

TRADE AREA MAP



**Jeremiah Baron
& CO.**

Commercial Real Estate, LLC

49 SW Flagler Ave. Suite 301
Stuart FL, 34994
www.commercialrealestatellc.com

Josh Johnson
772.286.5744 Office
772.631.5805 Mobile
jjohnson@commercialrealestatellc.com