



COMMERCIAL REAL ESTATE

OFFICE BUILDING FOR LEASE



Grand Panama

600 Grand Panama Blvd, Panama City Beach, FL 32407

BEN WILKINSON
Partner/Broker
850.509.5258
benw@tlgproperty.com

KEITH TAYLOR
Associate
850.830.0643
ktaylor@tlgproperty.com

TLG REAL ESTATE SERVICES
3520 Thomasville Road, Suite 200
Tallahassee, FL 32309
O: 850.385.6363



EXECUTIVE SUMMARY

GRAND PANAMA

600 GRAND PANAMA BLVD, PANAMA CITY BEACH, FL 32407

**OFFERING SUMMARY****Available SF:** 1,547 - 6,509 SF**Lease Rate:** Upon Request**Building Size:** 29,633 SF**PROPERTY OVERVIEW**

*Executive office space available at Grand Panama.

*An upscale office building in thriving Panama City Beach.

*Grand Panama offers impressive Class A space.

*Ample parking is available with the convenience of a Summit Bank branch on the first floor.

*Card key security system is in place.

LOCATION OVERVIEW

Grand Panama is strategically located off Middle Beach Road in close proximity to business offices, retail stores and restaurants.

Ben Wilkinson
850.509.5258
benw@tlgproperty.com

Keith Taylor
850.830.0643
ktaylor@tlgproperty.com

TLG REAL ESTATE SERVICES
3520 Thomasville Road, Suite 200, Tallahassee, FL 32309
850.385.6363





ADDITIONAL PHOTOS

GRAND PANAMA

600 GRAND PANAMA BLVD, PANAMA CITY BEACH, FL 32407



Ben Wilkinson
850.509.5258
benw@tlgproperty.com

Keith Taylor
850.830.0643
ktaylor@tlgproperty.com

TLG REAL ESTATE SERVICES
3520 Thomasville Road, Suite 200, Tallahassee, FL 32309
850.385.6363





AVAILABLE SPACES

GRAND PANAMA

600 GRAND PANAMA BLVD, PANAMA CITY BEACH, FL 32407



SPACE	SPACE USE	LEASE RATE	LEASE TYPE	SIZE (SF)
203	Office Building	NEGOTIABLE	NNN	1,547 SF
301	Office Building	NEGOTIABLE	NNN	3,475 SF
400	Office Building	NEGOTIABLE	NNN	6,509 SF

Ben Wilkinson
850.509.5258
benw@tlgproperty.com

Keith Taylor
850.830.0643
ktaylor@tlgproperty.com

TLG REAL ESTATE SERVICES
3520 Thomasville Road, Suite 200, Tallahassee, FL 32309
850.385.6363

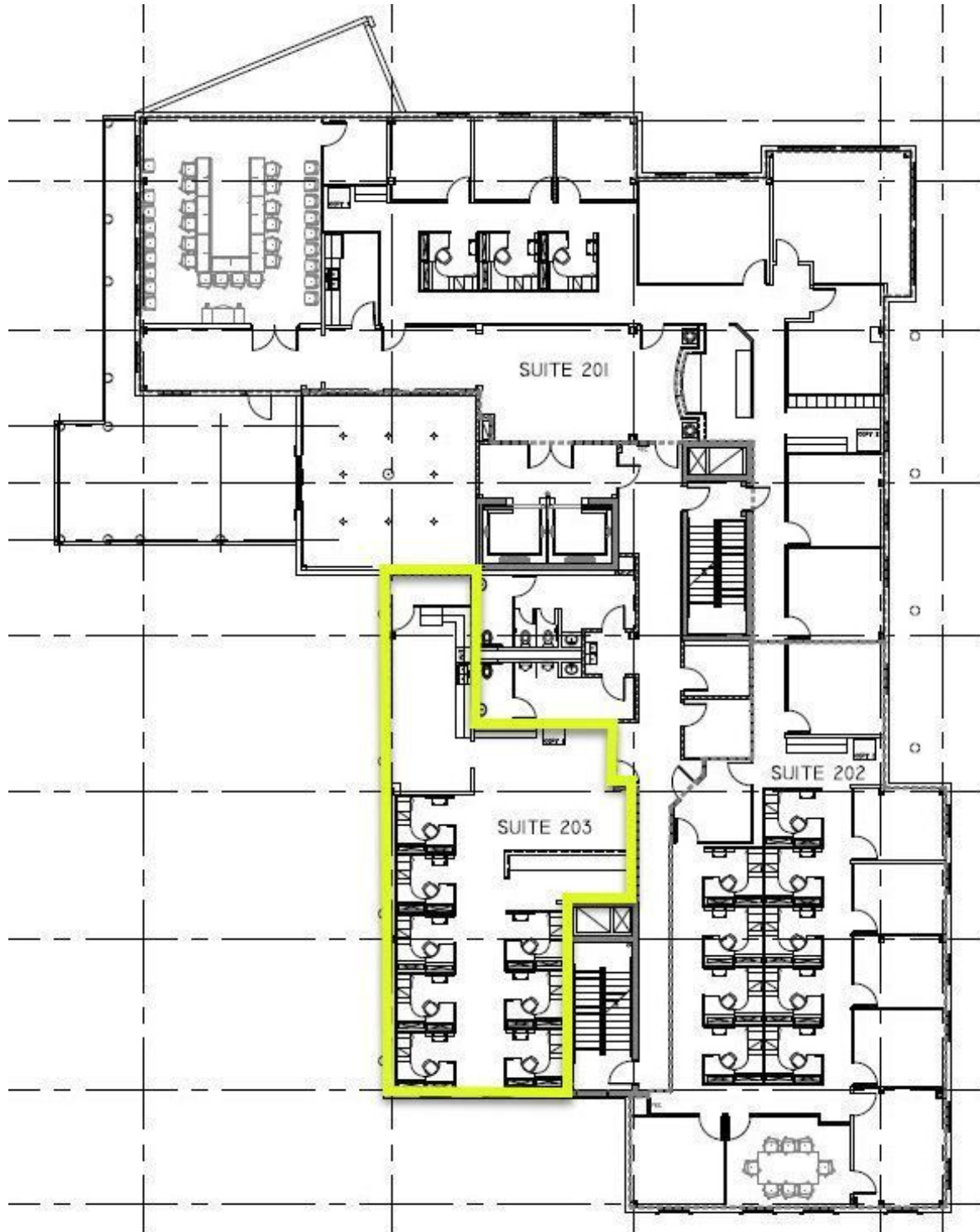




SUITE 203 FLOOR PLANS

GRAND PANAMA

600 GRAND PANAMA BLVD, PANAMA CITY BEACH, FL 32407



Ben Wilkinson
850.509.5258
benw@tlgproperty.com

Keith Taylor
850.830.0643
ktaylor@tlgproperty.com

TLG REAL ESTATE SERVICES
3520 Thomasville Road, Suite 200, Tallahassee, FL 32309
850.385.6363





SUITE 301 FLOOR PLANS

GRAND PANAMA

600 GRAND PANAMA BLVD, PANAMA CITY BEACH, FL 32407



Ben Wilkinson
850.509.5258
benw@tlgproperty.com

Keith Taylor
850.830.0643
ktaylor@tlgproperty.com

TLG REAL ESTATE SERVICES
3520 Thomasville Road, Suite 200, Tallahassee, FL 32309
850.385.6363

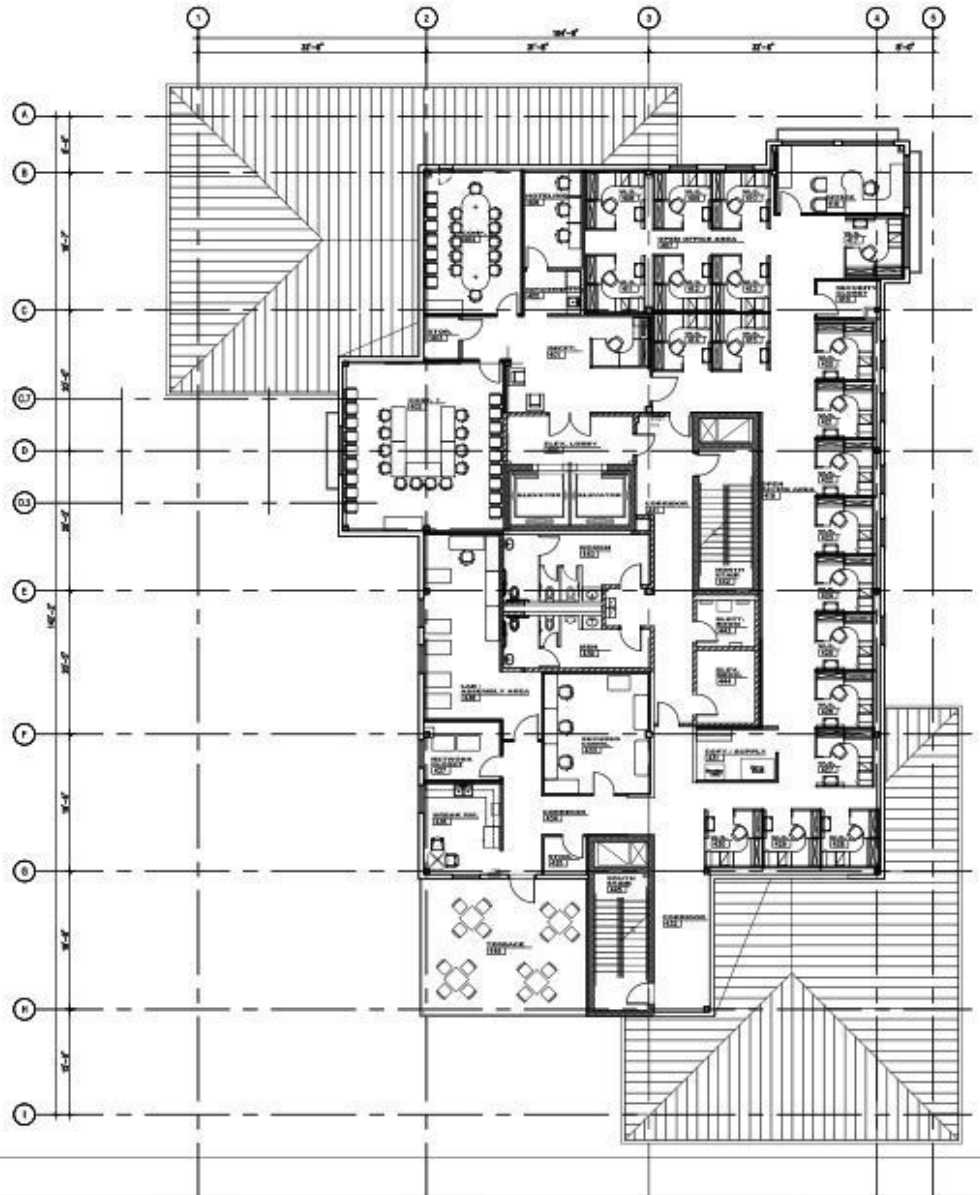




SUITE 400 FLOOR PLANS

GRAND PANAMA

600 GRAND PANAMA BLVD, PANAMA CITY BEACH, FL 32407



AREA CALCULATIONS - 4TH FLOOR	
AREA DESCRIPTION	AREA / SQ. FEET
4TH FLOOR GROSS SF.	7,524
4TH FLOOR WITHIN EXT. WALL	7,260
COMMON AREA - ELEV. MECH.	99
VERTICLE PENETRATIONS	652
USEABLE AREA	6,509
TERRACE	463

FOURTH FLOOR PLAN
SCALE: 1/8"=1'-0"

Ben Wilkinson
850.509.5258
benw@tlgproperty.com

Keith Taylor
850.830.0643
ktaylor@tlgproperty.com

TLG REAL ESTATE SERVICES
3520 Thomasville Road, Suite 200, Tallahassee, FL 32309
850.385.6363

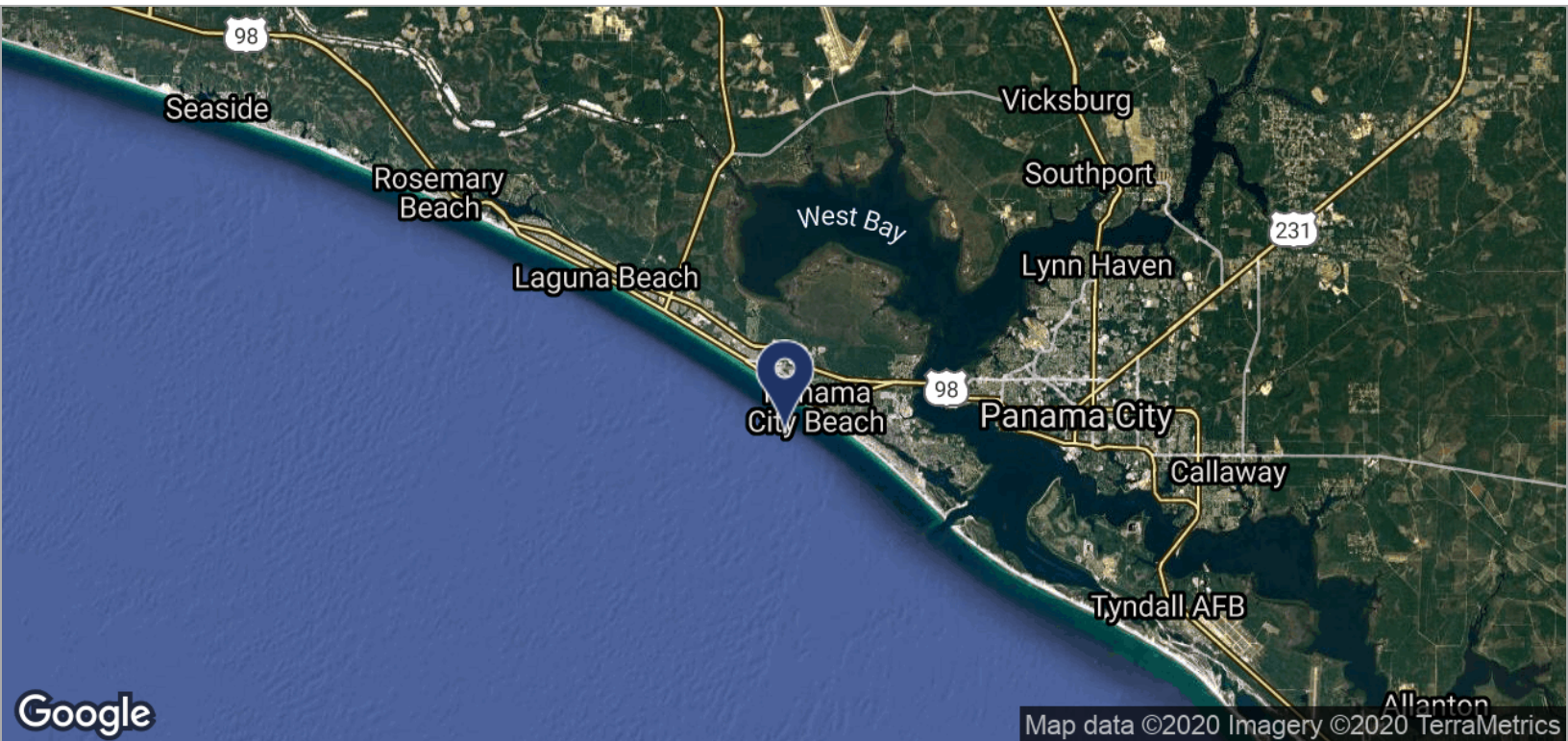
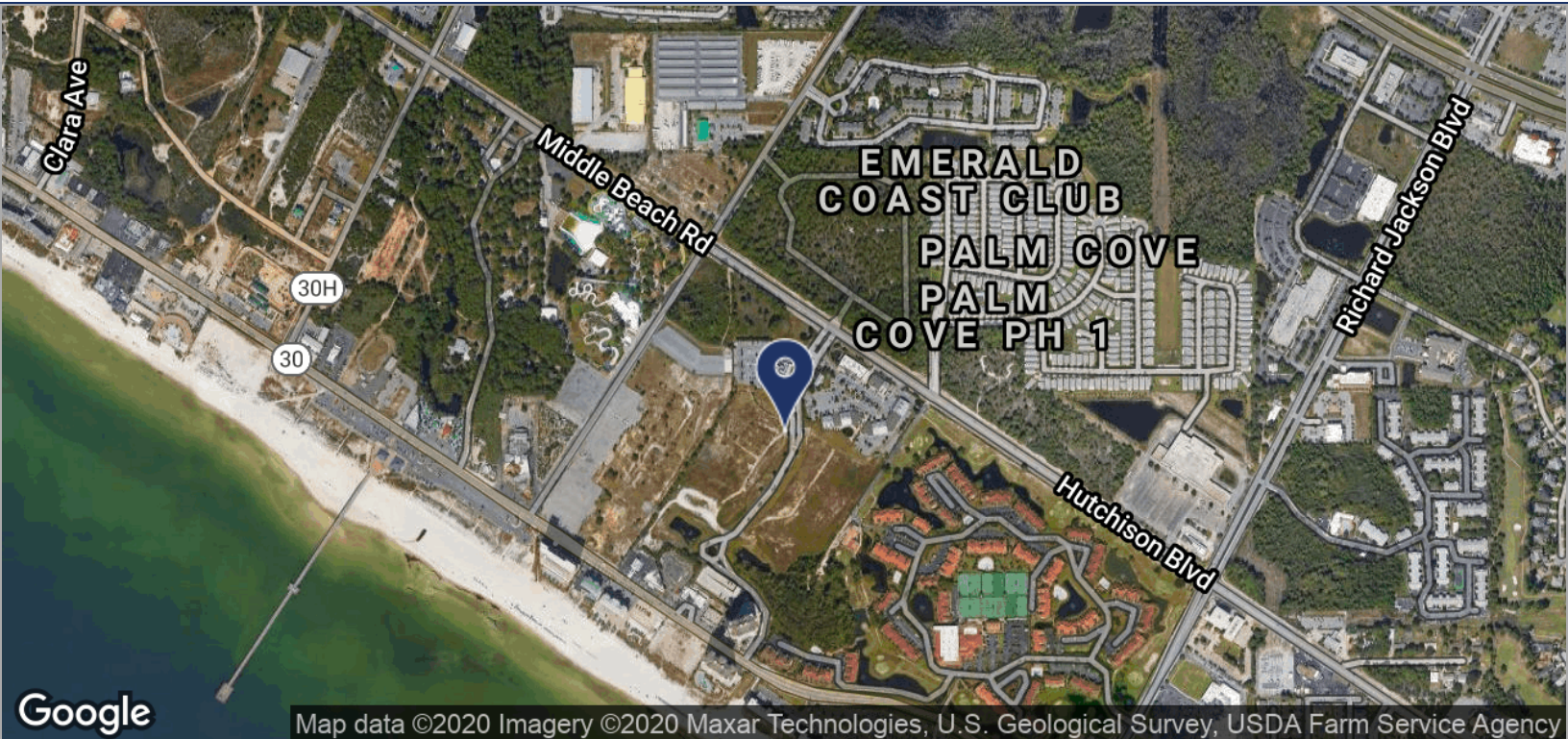




LOCATION MAPS

GRAND PANAMA

600 GRAND PANAMA BLVD, PANAMA CITY BEACH, FL 32407



Ben Wilkinson
 850.509.5258
 benw@tlgproperty.com

Keith Taylor
 850.830.0643
 ktaylor@tlgproperty.com

TLG REAL ESTATE SERVICES
 3520 Thomasville Road, Suite 200, Tallahassee, FL 32309
 850.385.6363

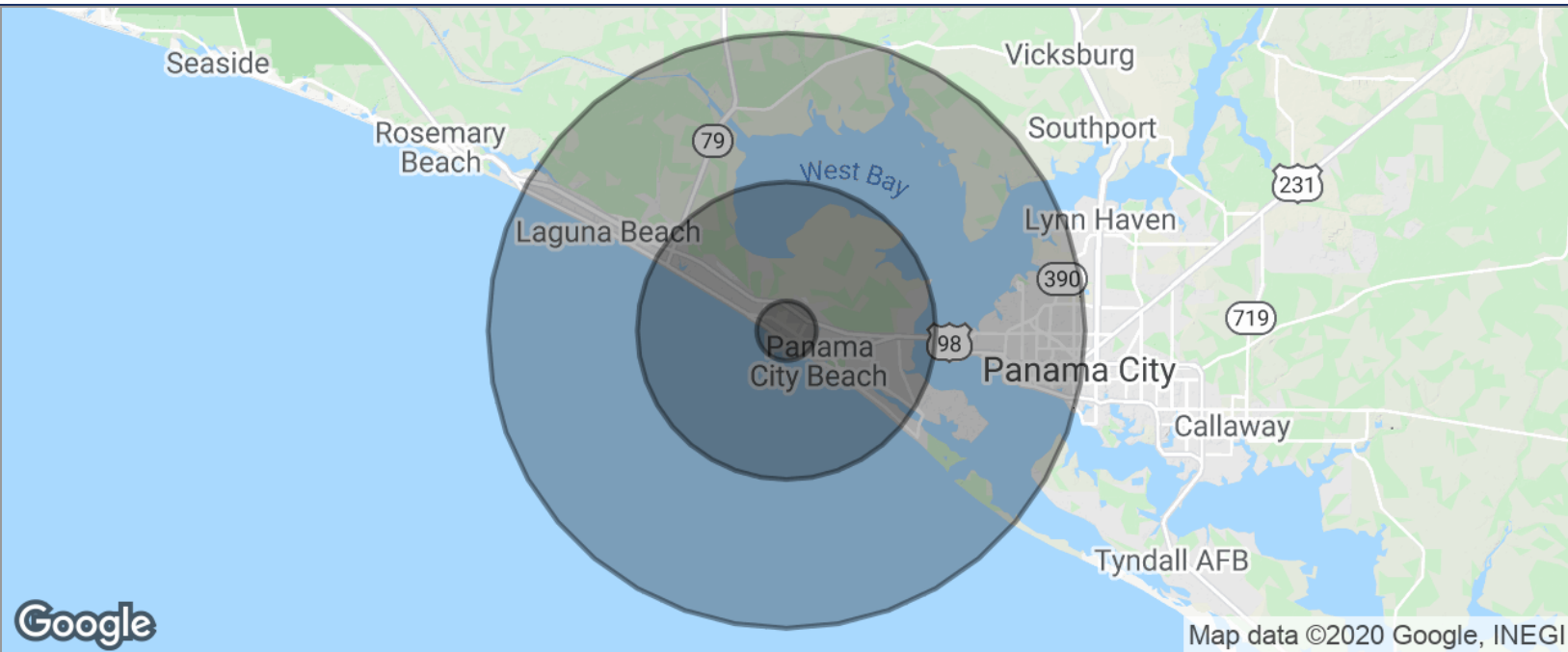




DEMOGRAPHICS MAP

GRAND PANAMA

600 GRAND PANAMA BLVD, PANAMA CITY BEACH, FL 32407

**POPULATION**

	1 MILE	5 MILES	10 MILES
TOTAL POPULATION	1,200	21,361	57,071
MEDIAN AGE	41.4	40.1	40.3
MEDIAN AGE (MALE)	42.5	40.3	39.7
MEDIAN AGE (FEMALE)	39.3	39.6	40.8

HOUSEHOLDS & INCOME

	1 MILE	5 MILES	10 MILES
TOTAL HOUSEHOLDS	575	9,679	25,432
# OF PERSONS PER HH	2.1	2.2	2.2
AVERAGE HH INCOME	\$57,891	\$61,458	\$65,118
AVERAGE HOUSE VALUE	\$290,673	\$282,139	\$236,849

* Demographic data derived from 2010 US Census

Ben Wilkinson

850.509.5258

benw@tlgproperty.com

Keith Taylor

850.830.0643

ktaylor@tlgproperty.com

TLG REAL ESTATE SERVICES

3520 Thomasville Road, Suite 200, Tallahassee, FL 32309

850.385.6363

