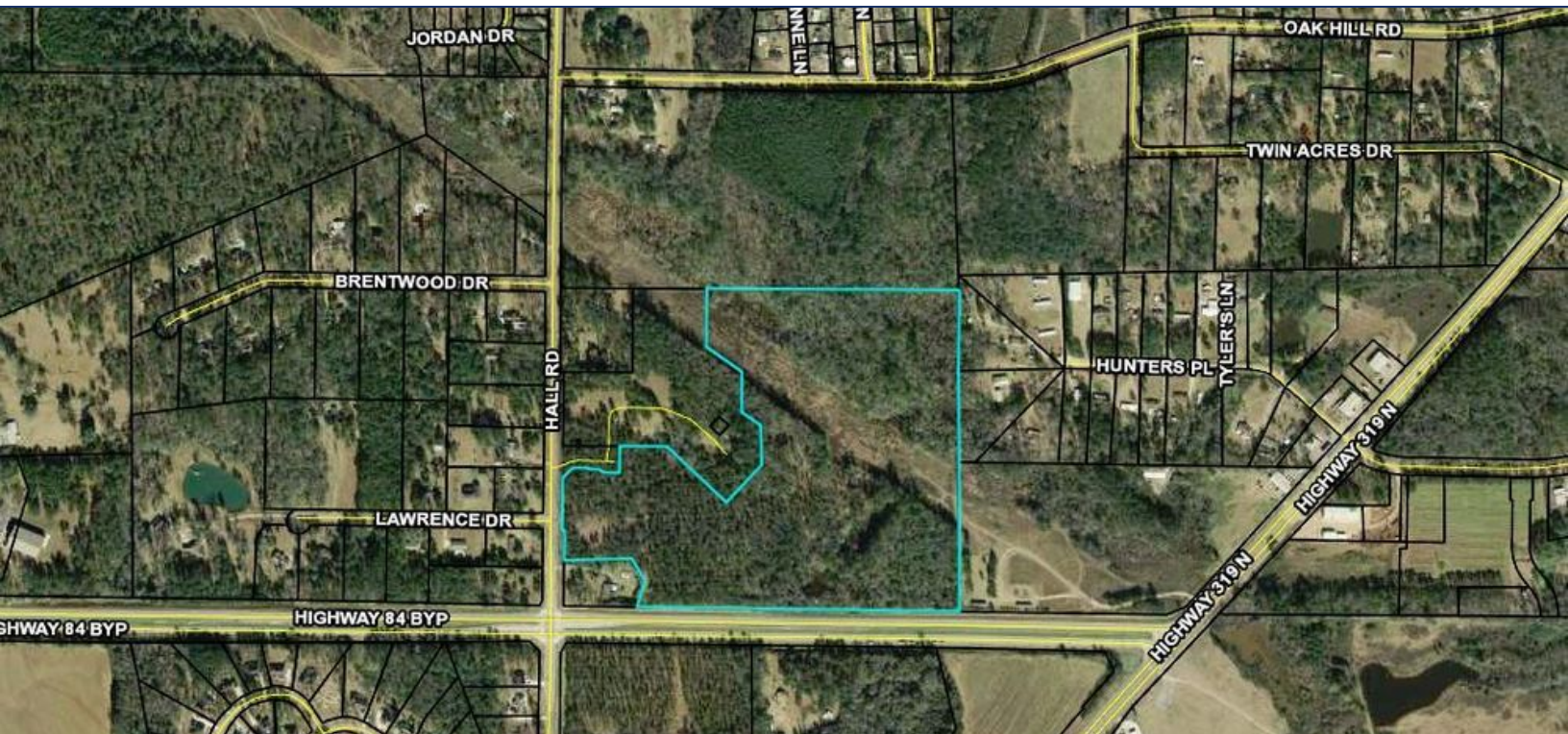




EXECUTIVE SUMMARY
1220 HALL ROAD
 THOMASVILLE, GA 31757



OFFERING SUMMARY

Sale Price:	\$1,508,500
Price / Acre:	\$35,000
Lot Size:	43.1 Acres
Zoning:	RM-11
APN:	045 146 A

PROPERTY OVERVIEW

- *RM-11 zoned parcel with city utilities available to the site.
- *Perfect for multi-family or a single family neighborhood.
- *Call the listing agent today to discuss this opportunity.

LOCATION OVERVIEW

This parcel is located in Thomas County at the corner of Hall Road and the Hwy 84 Bypass and in close proximity to schools, retail, and restaurants.

Trey DeSantis
 850.766.6868
 trey@tlgproperty.com

TLG REAL ESTATE SERVICES
 3520 Thomasville Road, Suite 200, Tallahassee, FL 32309
 850.385.6363





RETAILER MAP
1220 HALL ROAD
THOMASVILLE, GA 31757



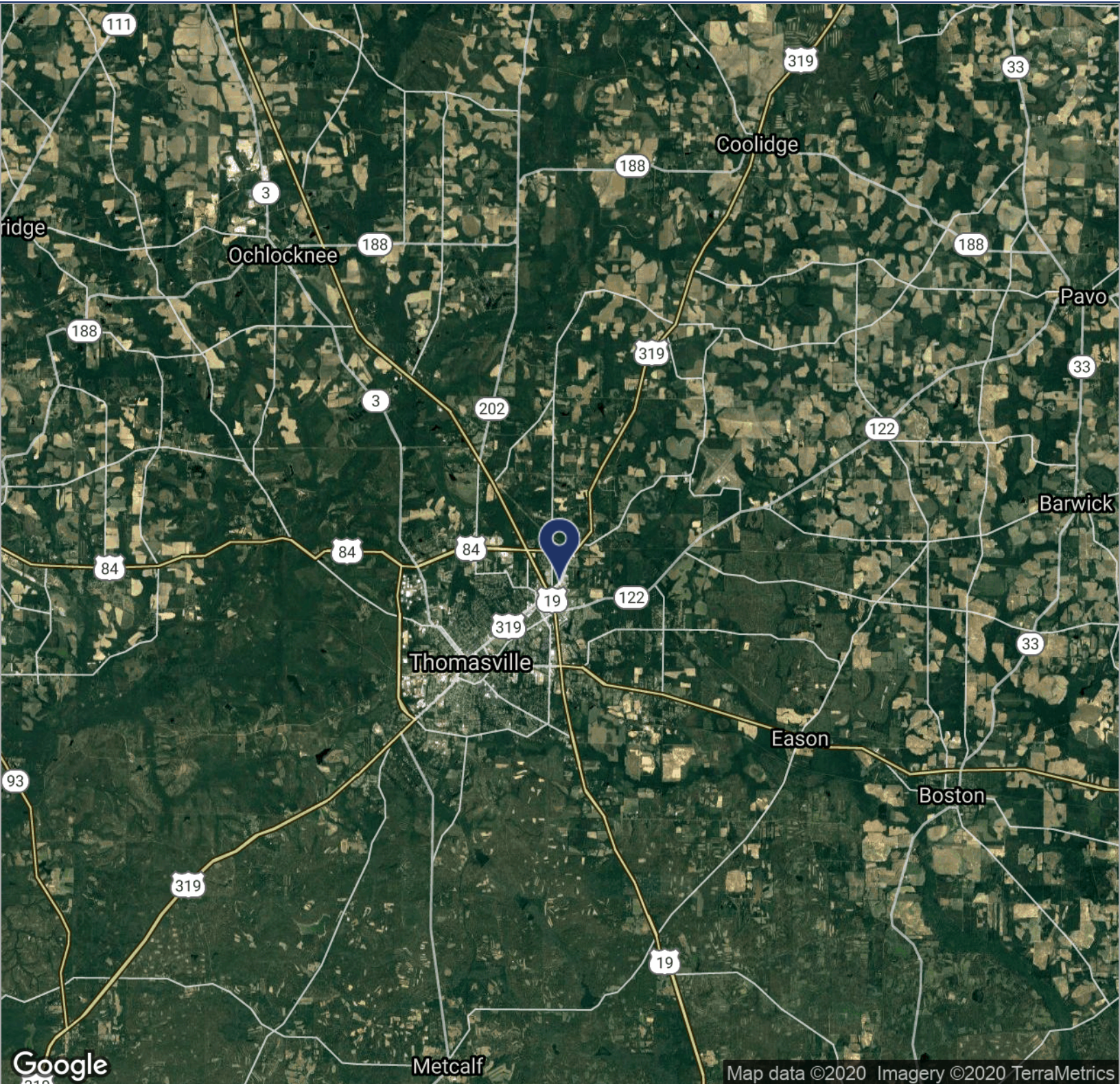
Trey DeSantis
850.766.6868
trey@tlgproperty.com

TLG REAL ESTATE SERVICES
3520 Thomasville Road, Suite 200, Tallahassee, FL 32309
850.385.6363





LOCATION MAPS
1220 HALL ROAD
THOMASVILLE, GA 31757



Map data ©2020 Imagery ©2020 TerraMetrics

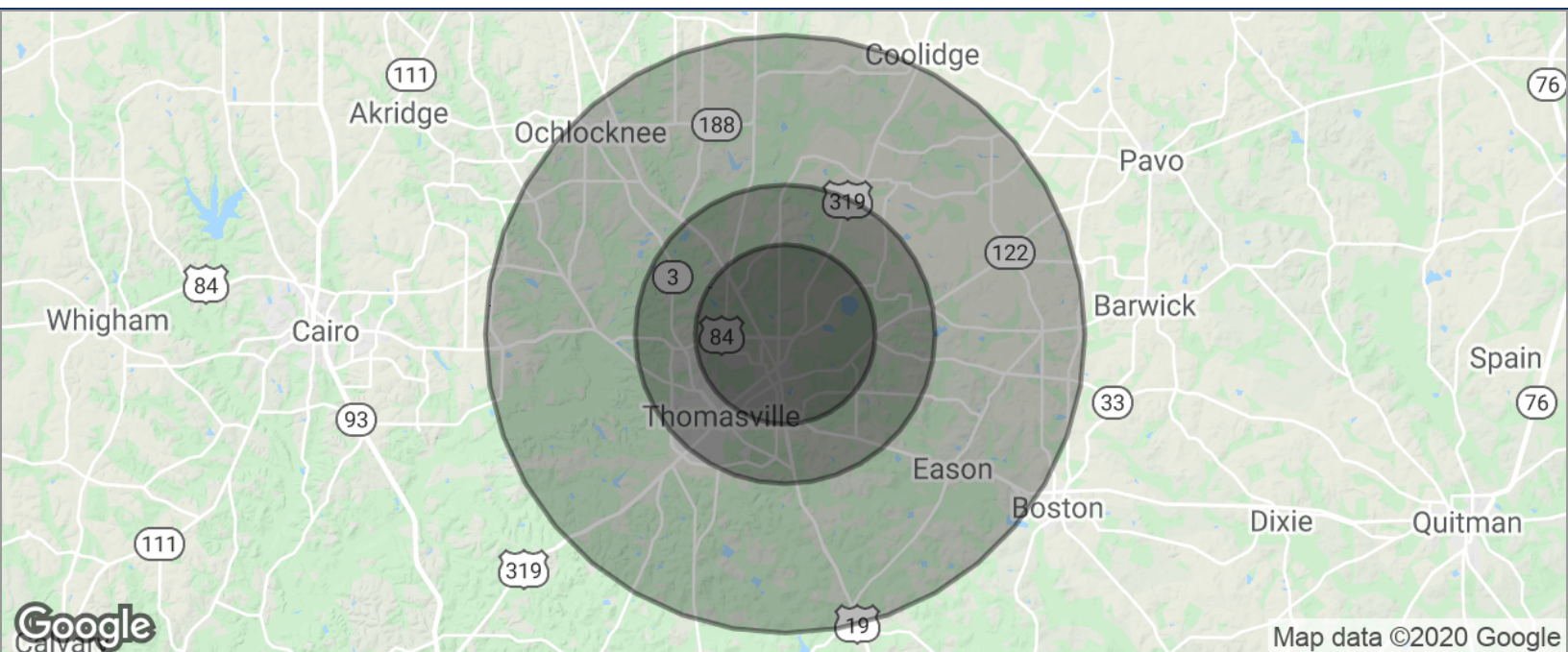
Trey DeSantis
850.766.6868
trey@tlgproperty.com

TLG REAL ESTATE SERVICES
3520 Thomasville Road, Suite 200, Tallahassee, FL 32309
850.385.6363





DEMOGRAPHICS MAP
1220 HALL ROAD
 THOMASVILLE, GA 31757



POPULATION	3 MILES	5 MILES	10 MILES
TOTAL POPULATION	9,072	20,781	36,421
MEDIAN AGE	38.0	39.1	38.6
MEDIAN AGE (MALE)	34.8	37.4	37.5
MEDIAN AGE (FEMALE)	39.8	40.8	39.8
HOUSEHOLDS & INCOME	3 MILES	5 MILES	10 MILES
TOTAL HOUSEHOLDS	3,839	8,727	14,535
# OF PERSONS PER HH	2.4	2.4	2.5
AVERAGE HH INCOME	\$50,791	\$54,611	\$54,384
AVERAGE HOUSE VALUE	\$165,129	\$195,940	\$191,129

* Demographic data derived from 2010 US Census

Trey DeSantis
 850.766.6868
 trey@tlgproperty.com

TLG REAL ESTATE SERVICES
 3520 Thomasville Road, Suite 200, Tallahassee, FL 32309
 850.385.6363

