



COMMERCIAL REAL ESTATE

LAND FOR SALE: 2 PARCELS



US Hwy 84 East
Cairo, GA 39828

TREY DESANTIS
Partner/Associate
850.766.6868
trey@tlgproperty.com

TLG REAL ESTATE SERVICES
3520 Thomasville Road, Suite 200
Tallahassee, FL 32309
O: 850.385.6363



EXECUTIVE SUMMARY
US HWY 84 EAST
 CAIRO, GA 39828



OFFERING SUMMARY

Sale Price: Priced Separately - \$149,500.00
 (per parcel)

Lot Size: 1.75 AC Each Parcel

APN: 0068 0050

PROPERTY OVERVIEW

This land offers two parcels that can be sold separately. Both parcels surround Dollar General on US Hwy 84 E and are 1.75 (+/-) acres each. Both are priced at \$149,500.00 per parcel. The property is located within minutes of Downtown Cairo and offers frontage on US Hwy 84 E. Other businesses in the area consist of restaurants, hotels and professional offices.

LOCATION OVERVIEW

Located just outside Cairo, GA proper on US Hwy 84 East

[CLICK HERE For Grady County Zoning & Planning](#)

Trey DeSantis
 850.766.6868
 trey@tlgproperty.com

TLG REAL ESTATE SERVICES
 3520 Thomasville Road, Suite 200, Tallahassee, FL 32309
 850.385.6363





ADDITIONAL PHOTOS
US HWY 84 EAST
CAIRO, GA 39828



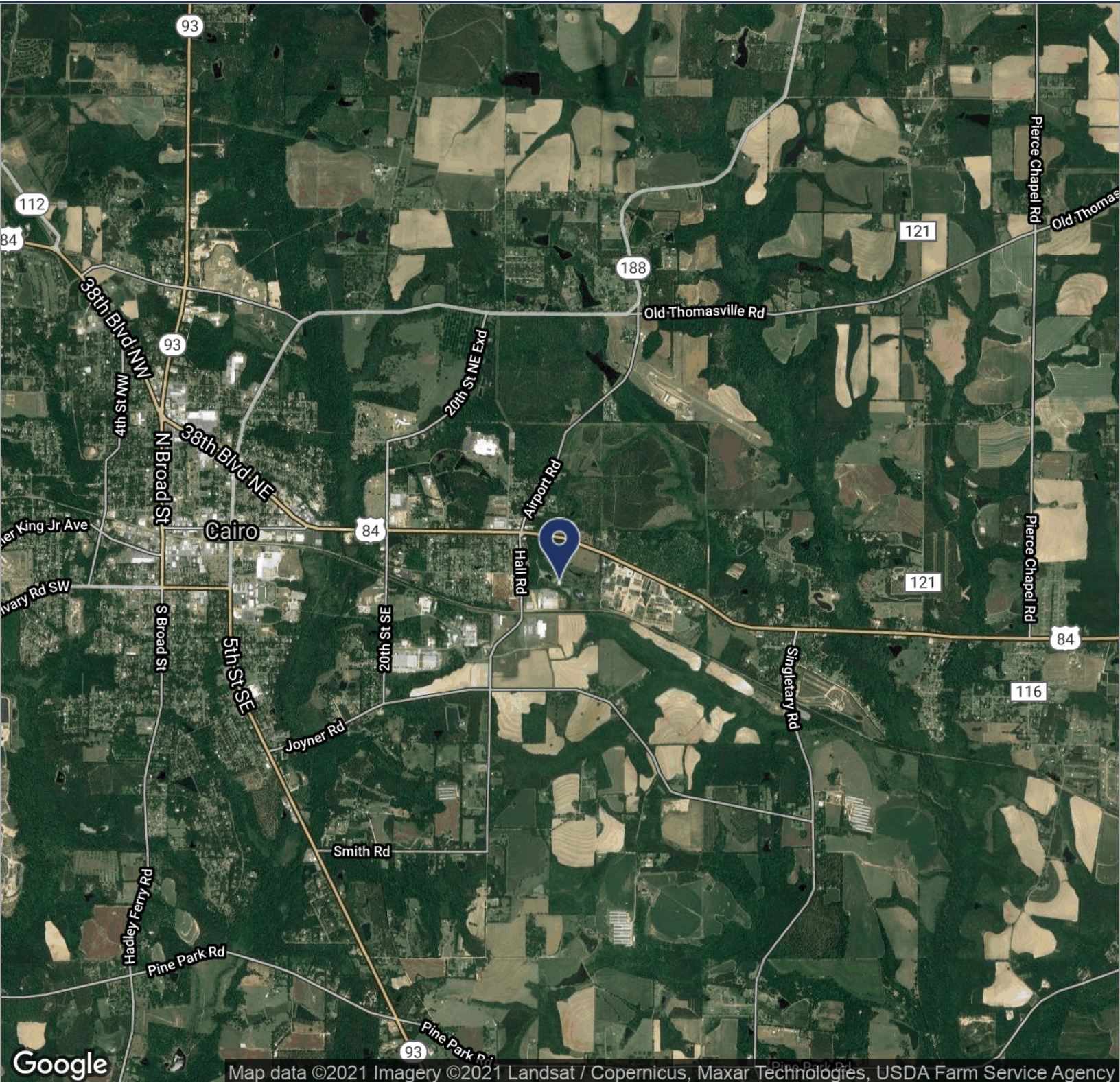
Trey DeSantis
850.766.6868
trey@tlgproperty.com

TLG REAL ESTATE SERVICES
3520 Thomasville Road, Suite 200, Tallahassee, FL 32309
850.385.6363





LOCATION MAPS
US HWY 84 EAST
 CAIRO, GA 39828



Google

Map data ©2021 Imagery ©2021 Landsat / Copernicus, Maxar Technologies, USDA Farm Service Agency

Trey DeSantis
 850.766.6868
 trey@tlgproperty.com

TLG REAL ESTATE SERVICES
 3520 Thomasville Road, Suite 200, Tallahassee, FL 32309
 850.385.6363



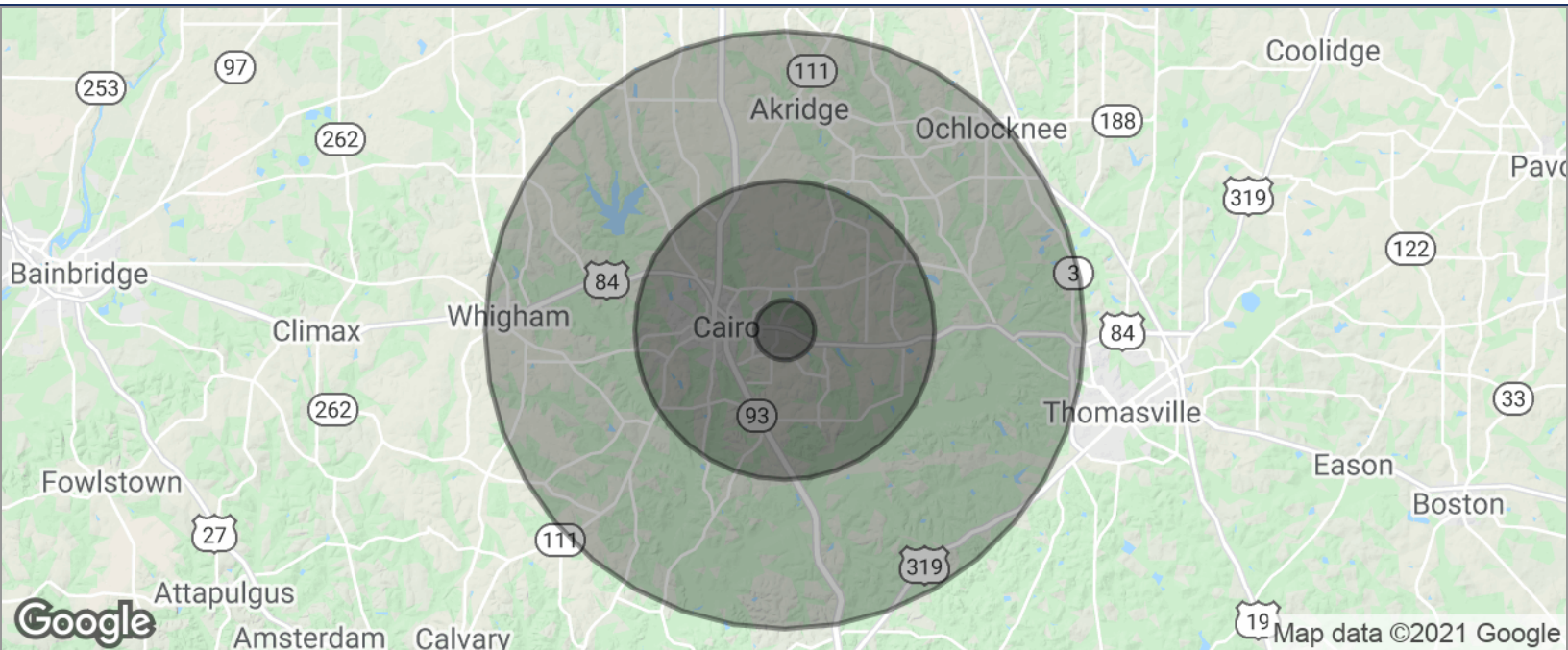
This information has been obtained from sources believed reliable. We have not verified it and make no guarantee, warranty or representation about it. Any projections, opinions, assumptions or estimates used are for example only and do not represent the current or future performance of the property. You and your advisors should conduct a careful, independent investigation of the property to determine to your satisfaction the suitability of the property for your needs. Photos herein are the property of their respective owners and use of these images without the express written content of the owner is prohibited.



DEMOGRAPHICS MAP

US HWY 84 EAST

CAIRO, GA 39828



POPULATION	1 MILE	5 MILES	10 MILES
TOTAL POPULATION	350	9,443	27,101
MEDIAN AGE	36.6	35.6	35.8
MEDIAN AGE (MALE)	36.7	35.4	35.3
MEDIAN AGE (FEMALE)	35.3	35.1	35.9
HOUSEHOLDS & INCOME	1 MILE	5 MILES	10 MILES
TOTAL HOUSEHOLDS	138	3,666	10,244
# OF PERSONS PER HH	2.5	2.6	2.6
AVERAGE HH INCOME	\$50,973	\$48,760	\$48,157
AVERAGE HOUSE VALUE	\$169,653	\$169,202	\$170,139

* Demographic data derived from 2010 US Census

Trey DeSantis
850.766.6868
trey@tlgproperty.com

TLG REAL ESTATE SERVICES
3520 Thomasville Road, Suite 200, Tallahassee, FL 32309
850.385.6363

