



# Redevelopment

# Opportunity Available

**FOR SALE** | 5999 Deerfield Road | Milford, Ohio 45150

- 30 acres
- Zoned R3
- Wooded Undeveloped
- Access from Deerfield Road
- Located in a thriving residential and commercial market
- Parcel Number: 182402C261

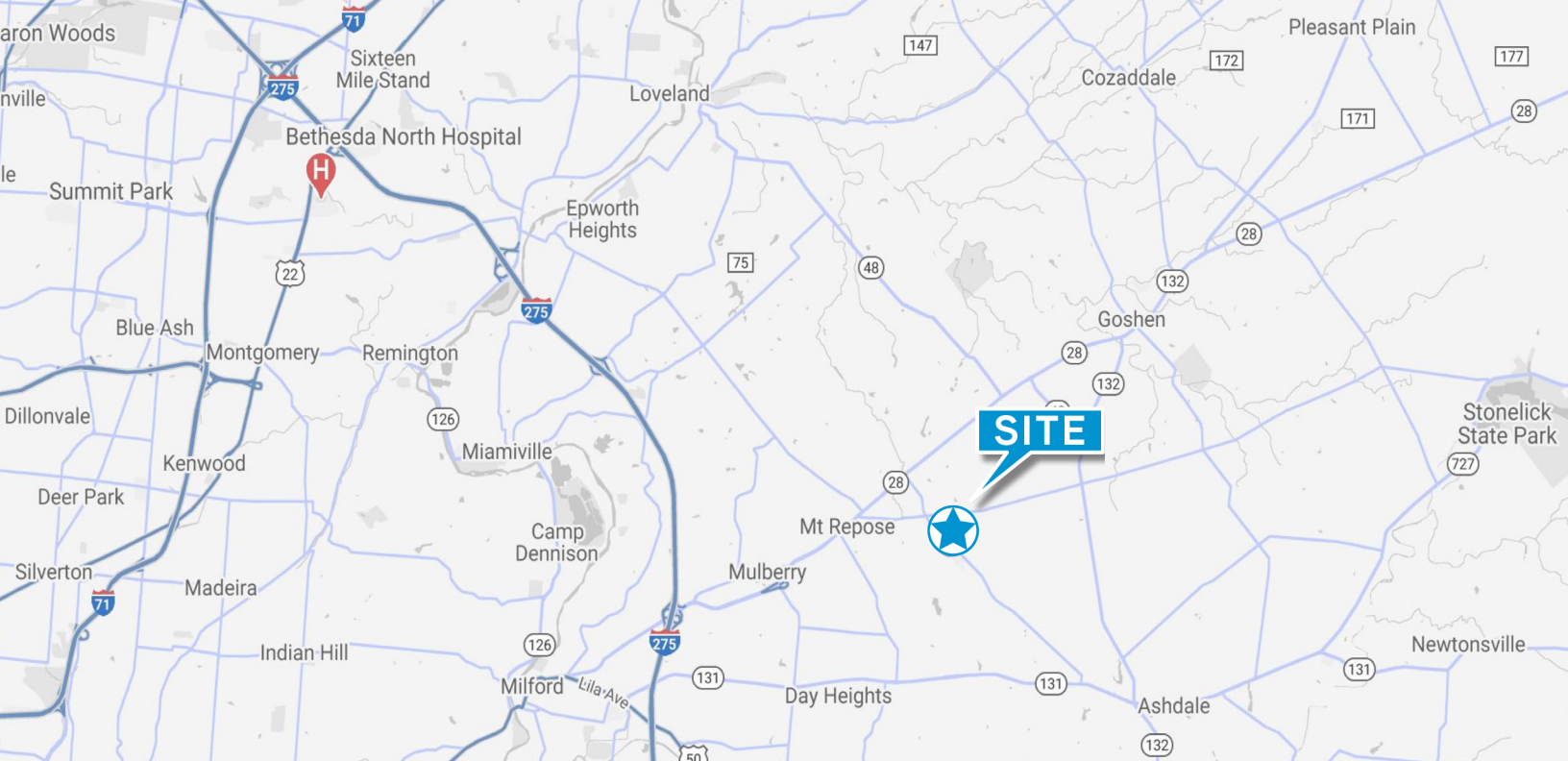
Sale Price:

**\$1,350,000**  
(\$45,000/acre)

Drew J. Wall  
Brokerage Associate  
+1 513 562 2254  
drew.wall@colliers.com

Erin M. Casey, GA-C, MICP™  
Brokerage Senior Vice President  
+1 513 562 2225  
erin.casey@colliers.com





### DEMOGRAPHICS



#### Total Population

(1 mile)	(3 mile)	(5 mile)
6,186	36,431	62,375



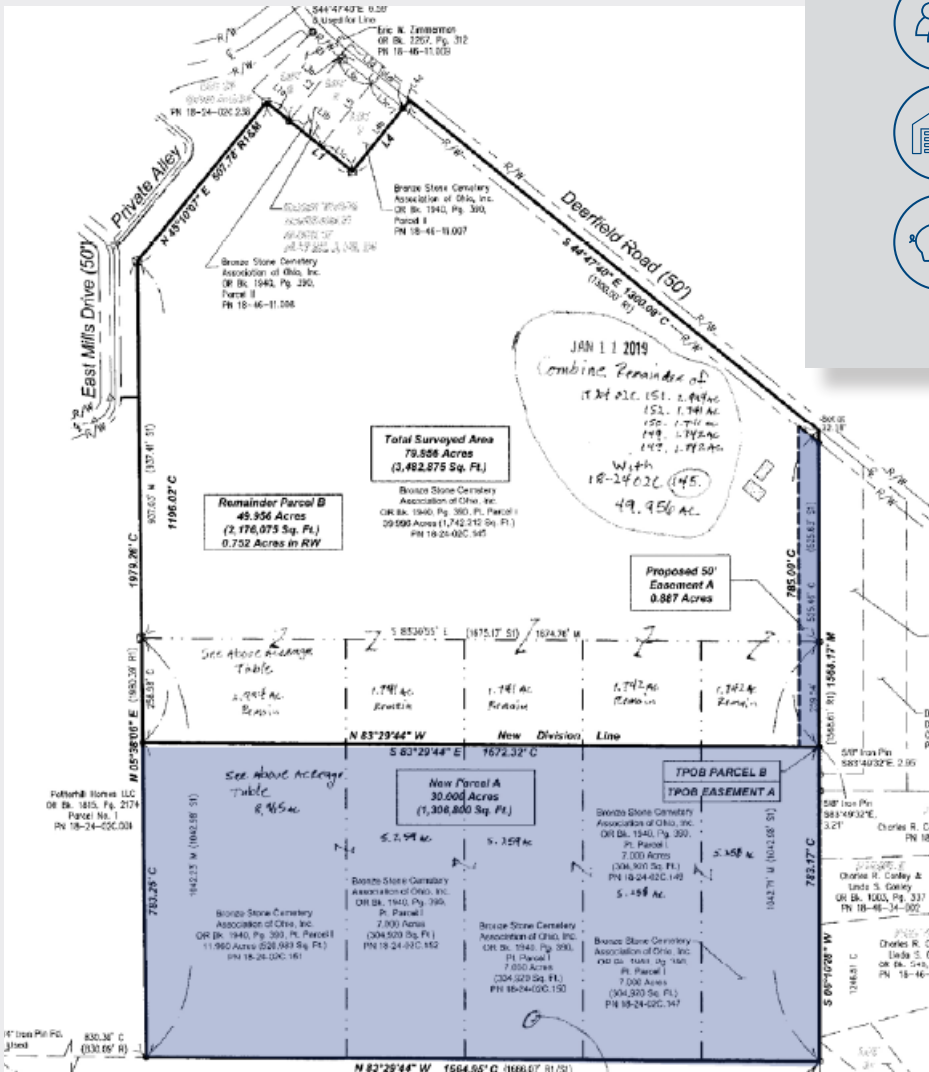
#### Total Households

(1 mile)	(3 mile)	(5 mile)
2,226	13,373	23,250



#### Average Household Income

(1 mile)	(3 mile)	(5 mile)
\$71,910	\$93,041	\$99,522



Drew J. Wall  
 Brokerage Associate  
 +1 513 562 2254  
 drew.wall@colliers.com

Erin M. Casey, GA-C, MICP™  
 Brokerage Senior Vice President  
 +1 513 562 2225  
 erin.casey@colliers.com

Accelerating success.

