



COMMERCIAL REAL ESTATE

LAND FOR SALE



Clements Property

Capital Circle SW, Tallahassee, FL 32305

BRYAN CURETON
Sales Associate
850.545.3687
bryan@tlgproperty.com

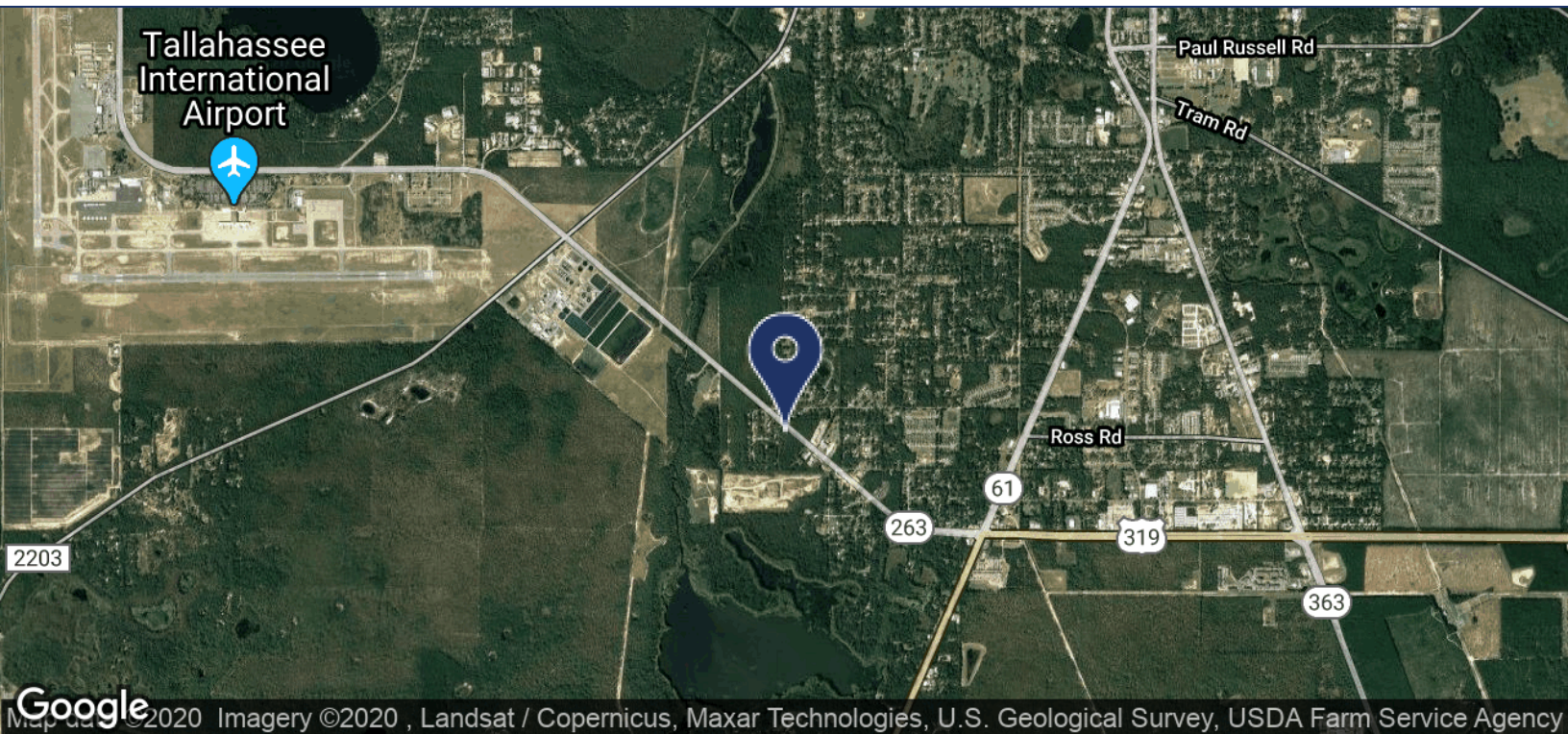
TLG REAL ESTATE SERVICES
3520 Thomasville Road, Suite 200
Tallahassee, FL 32309
O: 850.385.6363



EXECUTIVE SUMMARY

CLEMENTS PROPERTY

CAPITAL CIRCLE SW, TALLAHASSEE, FL 32305

**OFFERING SUMMARY****Sale Price:** \$720,000**Price / Acre:** \$120,000**Lot Size:** 6 Acres**APN:****PROPERTY OVERVIEW**

Vacant land with 650' of frontage on Capital Circle SW.

LOCATION OVERVIEW

Located on Capital Circle SW and Woodhaven Drive near the Tallahassee Regional Airport.

[Click here for Zoning Information](#)

Bryan Cureton
850.545.3687
bryan@tlgproperty.com

TLG REAL ESTATE SERVICES
3520 Thomasville Road, Suite 200, Tallahassee, FL 32309
850.385.6363

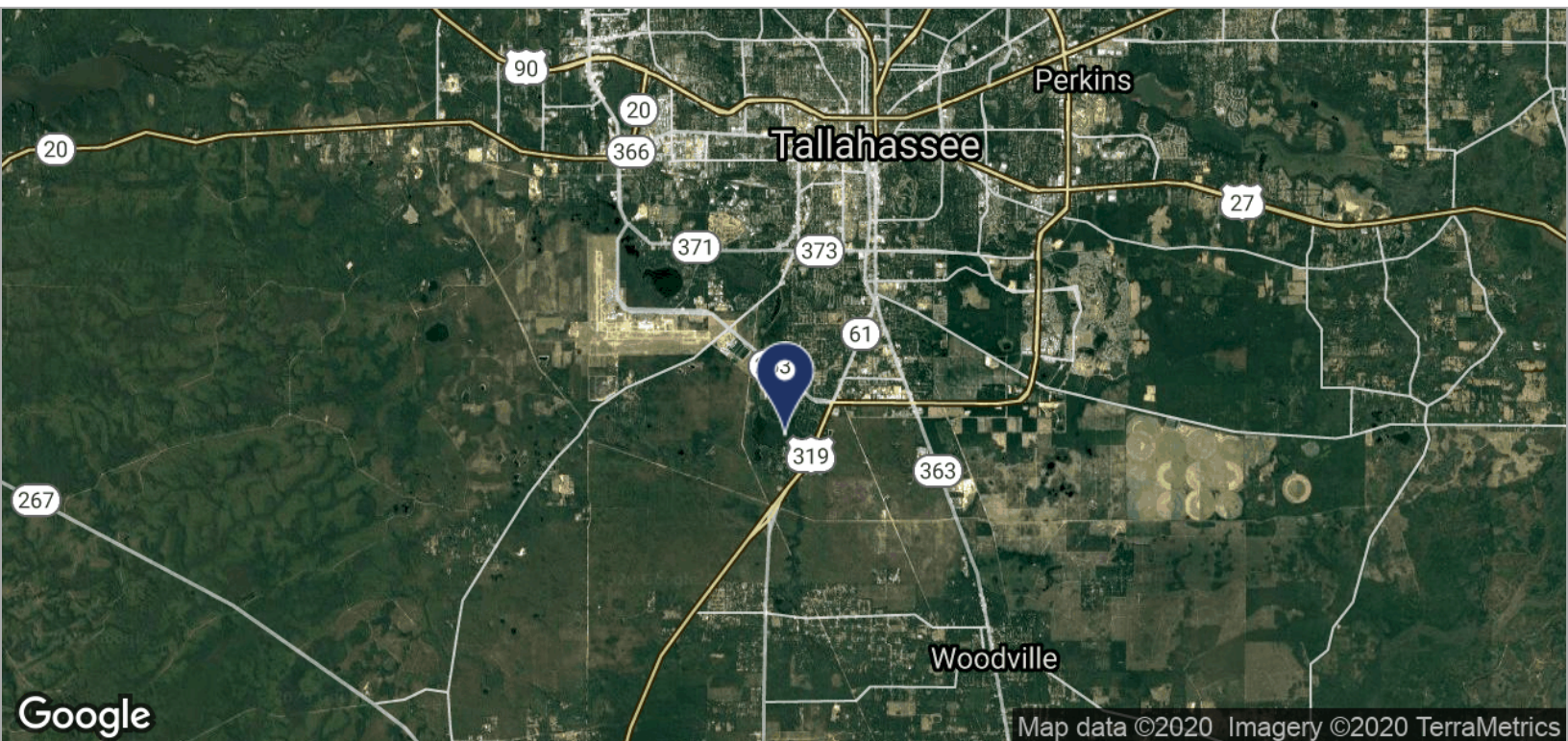
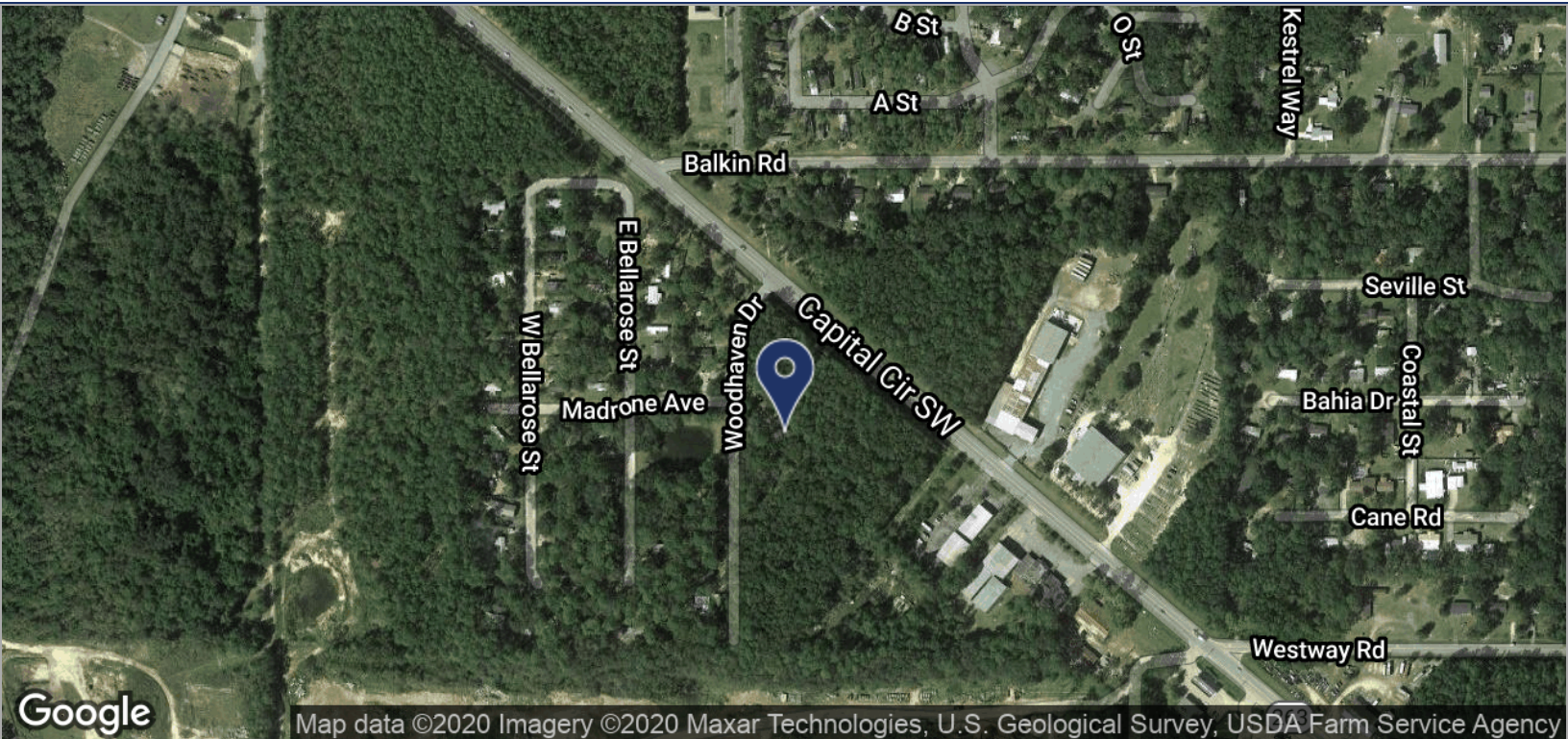




LOCATION MAPS

CLEMENTS PROPERTY

CAPITAL CIRCLE SW, TALLAHASSEE, FL 32305



Bryan Cureton
 850.545.3687
 bryan@tlgproperty.com

TLG REAL ESTATE SERVICES
 3520 Thomasville Road, Suite 200, Tallahassee, FL 32309
 850.385.6363

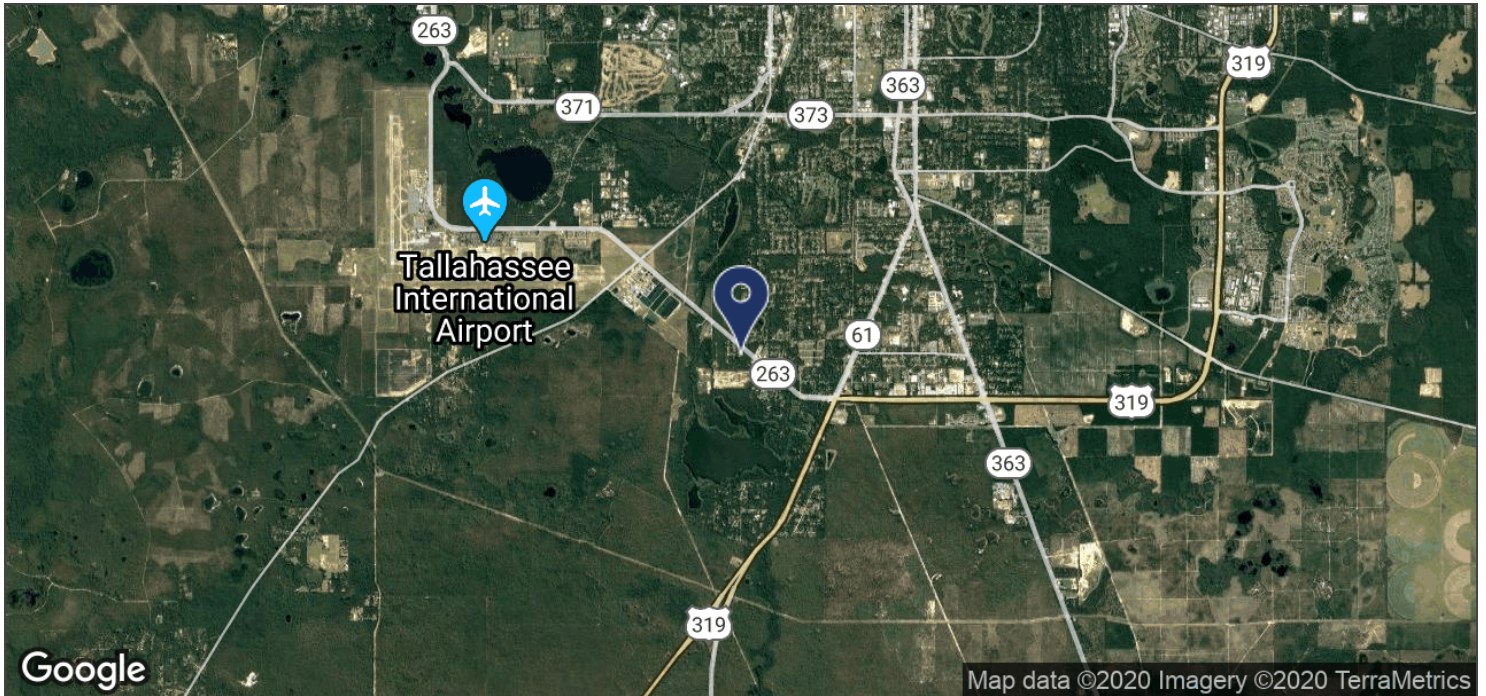




AERIAL MAP

CLEMENTS PROPERTY

CAPITAL CIRCLE SW, TALLAHASSEE, FL 32305



Bryan Cureton
850.545.3687
bryan@tlgproperty.com

TLG REAL ESTATE SERVICES
3520 Thomasville Road, Suite 200, Tallahassee, FL 32309
850.385.6363

