

Ballantrae Office Park

Property Details



- Available January 2020, 1,500 SF professional office at the NW corner of the office park with SR 54 frontage
- Five offices, large conference room/office, restroom, breakroom and reception with ceramic tile floors
- Water, sewer and garbage included in lease rate
- Abundant first come first served parking and located within minutes of the Suncoast Parkway and U.S. 41
- Numerous restaurants within minutes of this property.

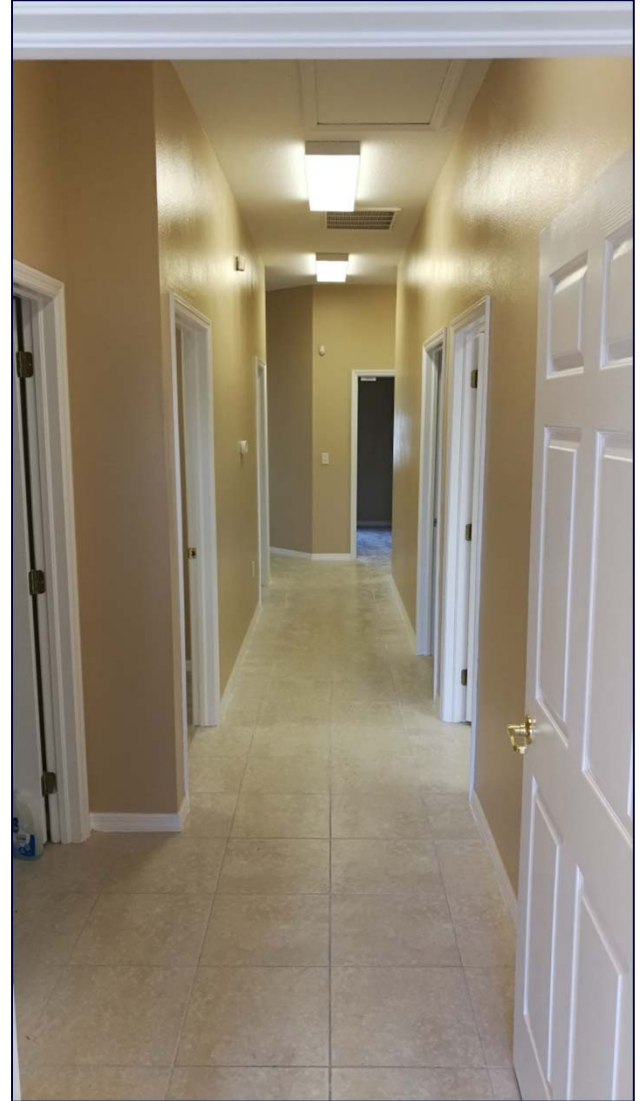
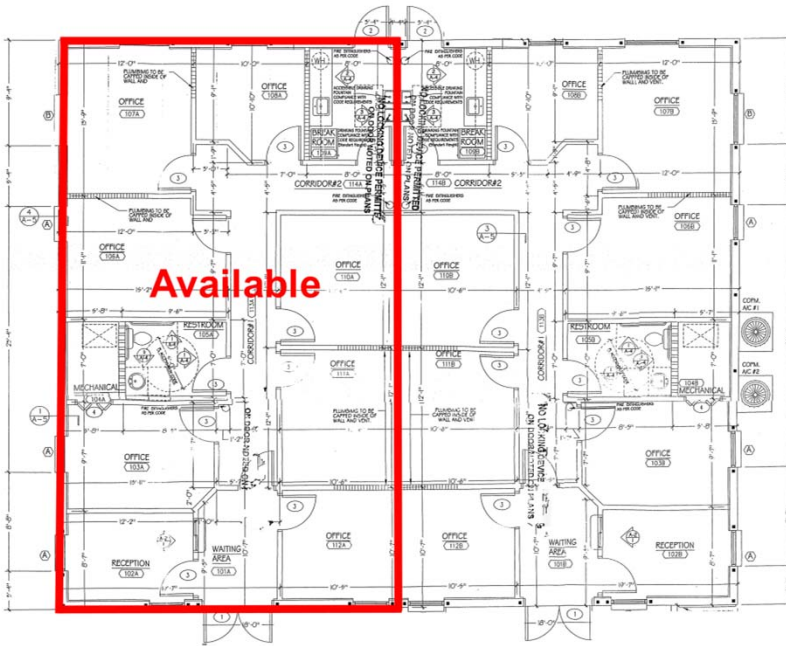
\$18.50 / SF / YR / MG (\$2,312.50/Month)



Shane Billings
Commercial Associate
Cell: 813-995-1592
Shane@BridgewaterCommercial.com



Bridgewater Commercial Real Estate
447 3rd Ave N Suite 403
St. Petersburg, FL 33701



2020 Forecasted Area Demographics

	1 Mile	3 Mile	5 Mile
Population	4,920	31,405	67,881
Median Age	33.9	39.1	40.8
Total Households	1,564	11,093	25,265
Average HH Income	\$115,808	\$119,990	\$112,216



Shane Billings
Commercial Associate
Cell: 813-995-1592
Shane@BridgewaterCommercial.com



Bridgewater Commercial Real Estate
447 3rd Ave N Suite 403
St. Petersburg, FL 33701