

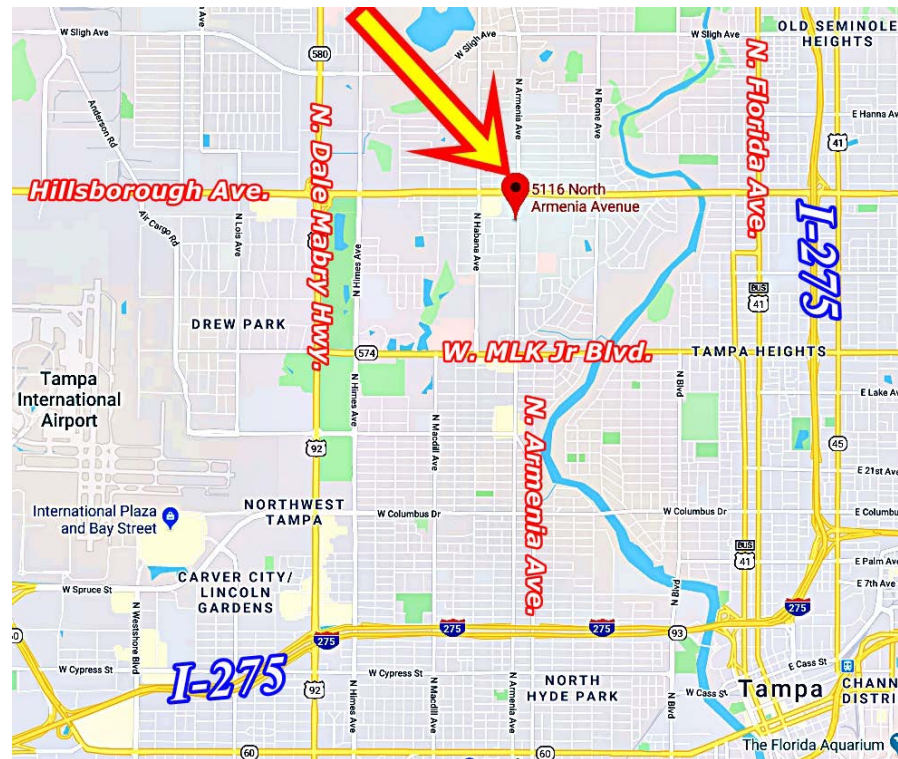
## Haskins & Herrera Distinctive Private Offices



**\$22.00 / SF / YR / Full Service**

### Property Details

- 690-2466 RSF available for lease in an exceptionally finished building
- 9 offices available in several configurations with a full-service lease
- 5 offices available as individual executive suites that may be leased for one-year terms
- 1/4 mile south of Hillsborough Ave., 1/2 mile to Publix, 1-1/2 miles to St. Joseph's Hospital, 15 minutes to Tampa International Airport and minutes to Downtown and the Westshore Business District



**Kori Billings**

Commercial Associate

Cell: 813-997-3341

Kori@BridgewaterCommercial.com



**Bridgewater Commercial Real Estate**

447 3rd Ave N Suite 403

St. Petersburg, FL 33701



**Kori Billings**

Commercial Associate

Cell: 813-997-3341

[Kori@BridgewaterCommercial.com](mailto:Kori@BridgewaterCommercial.com)



**Bridgewater Commercial Real Estate**

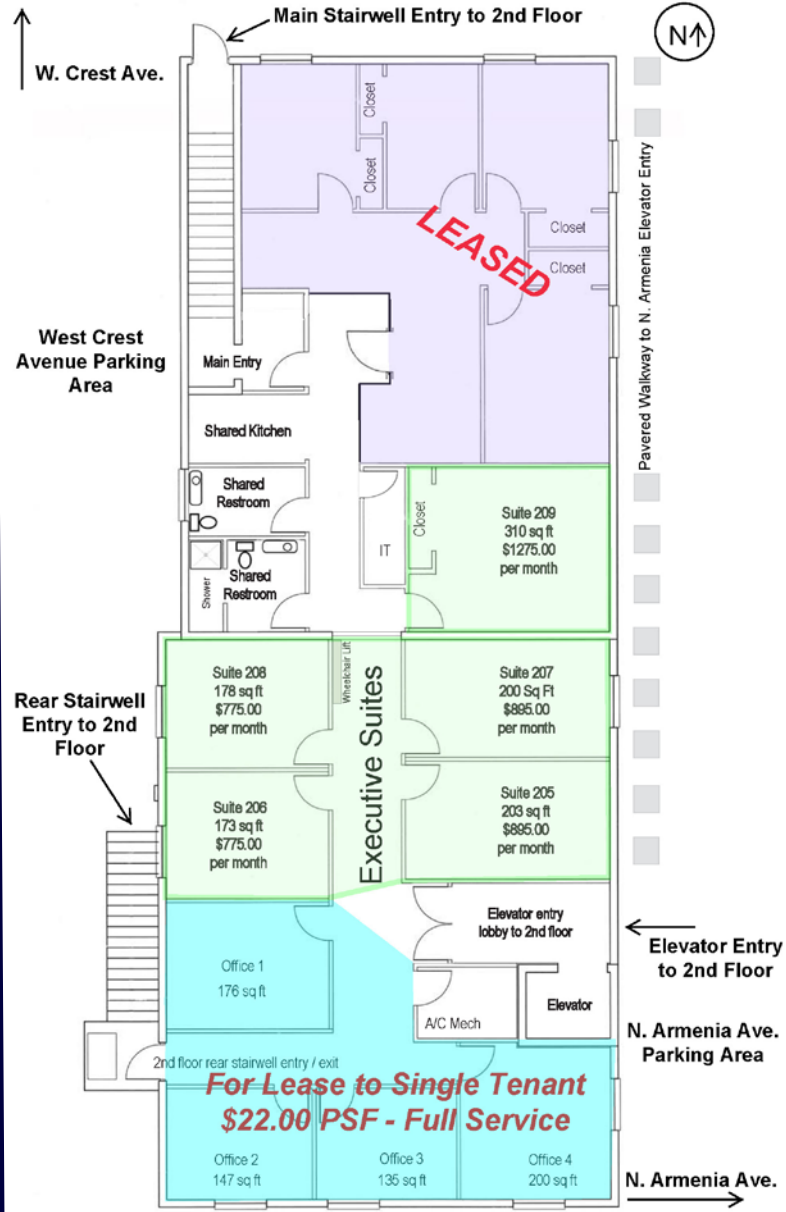
447 3rd Ave N Suite 403

St. Petersburg, FL 33701

## Full-Service Suite Options



## Executive Suite Options



### Full-Service Suite Combos\*

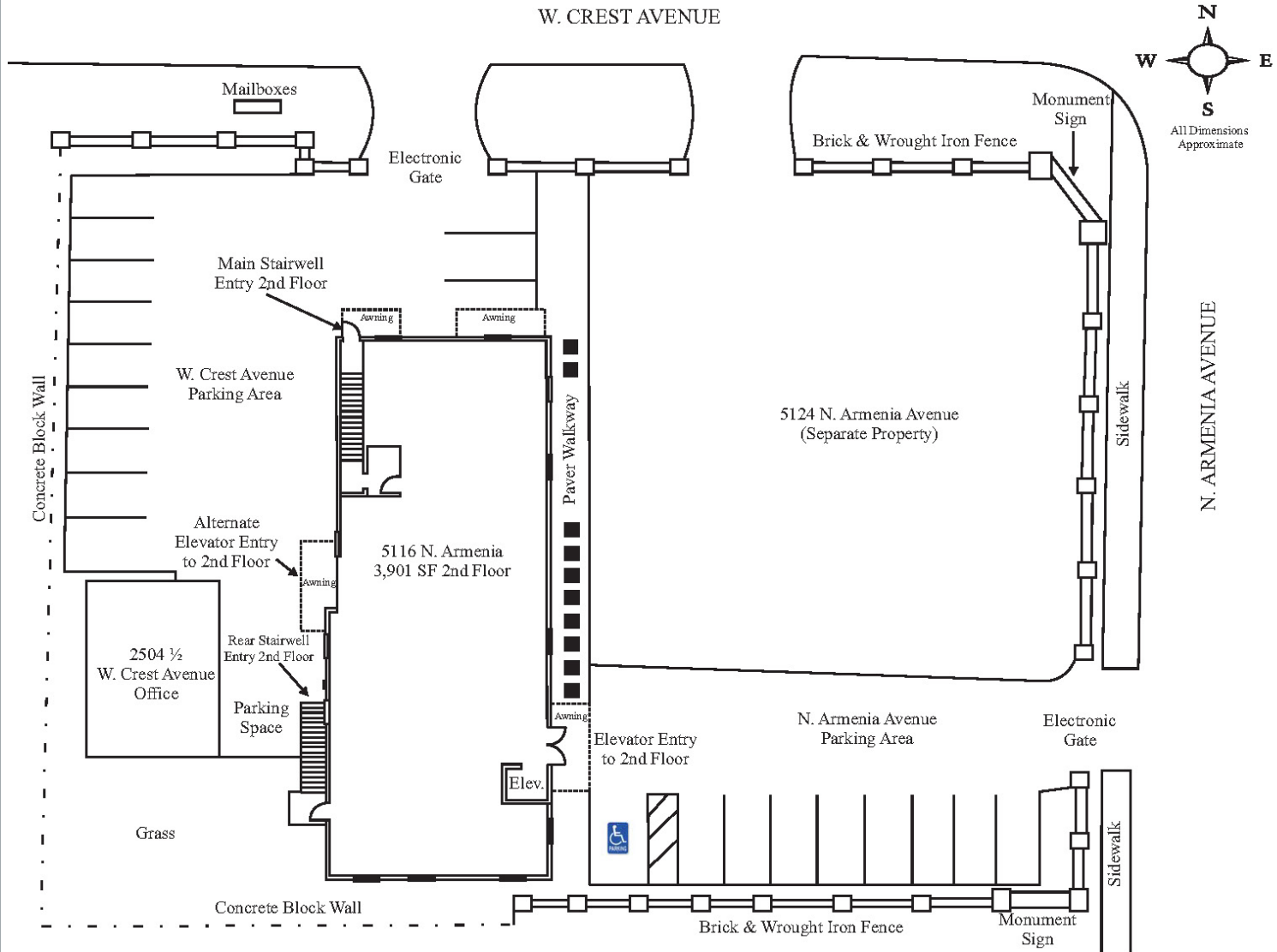
Suite #	RSF	Monthly Rate
A	942	\$1727
C	1524	\$2794

\*Suggested Combos – other configurations available.

### Executive Suite Pricing

Suite #	SF	Monthly Rate
205	203	\$895.00
206	173	\$775.00
207	200	\$895.00
208	178	\$775.00
209	310	\$1275.00

**For Lease to Single Tenant  
\$22.00 PSF - Full Service**



## Additional Property Features

Beautifully landscaped property with brick and wrought iron fencing and two gated parking areas

Complimentary wireless internet, shared kitchen and two shared bathrooms

Elevator access to the second floor, 24-hour access to building and CAT 5 Wiring

Marble flooring, mahogany doors, 7 1/2" baseboards, fully encased windows and doors

Separate security system for 2nd floor with cameras on parking areas and entry ways



**Kori Billings**

Commercial Associate

Cell: 813-997-3341

Kori@BridgewaterCommercial.com



**Bridgewater Commercial Real Estate**

447 3rd Ave N Suite 403

St. Petersburg, FL 33701