

UNION HILLS PROFESSIONAL CENTRE OFFICE SPACE FOR LEASE

LEVROSE
COMMERCIAL REAL ESTATE



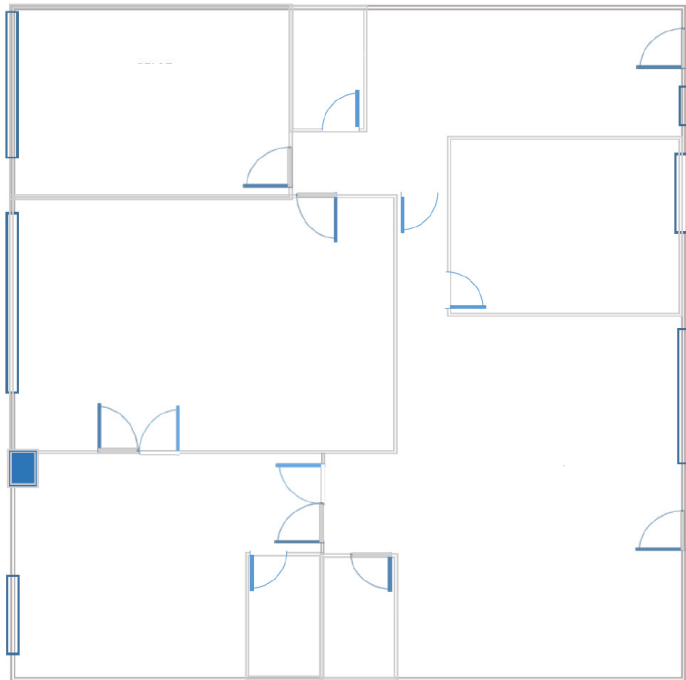
8877 W. UNION HILLS DR | PEORIA, AZ 85382

NATE GOLDFARB
480.289.4233
ngoldfarb@levrose.com

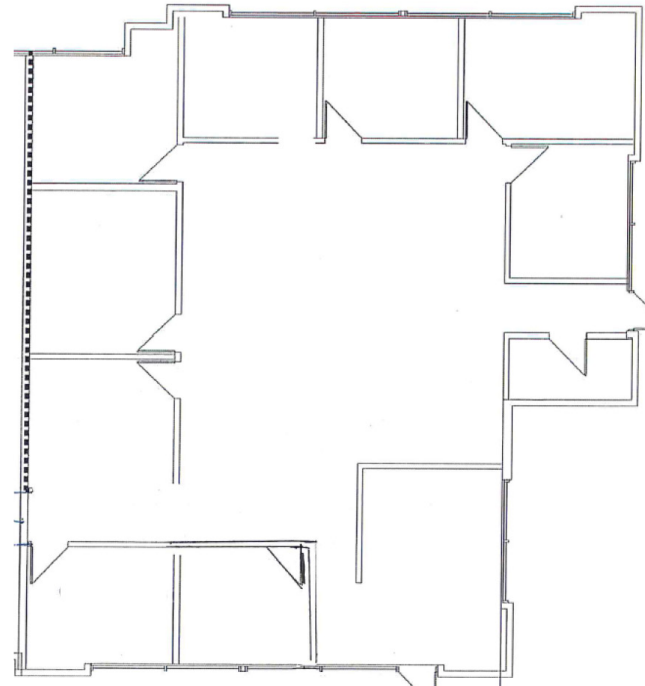
AERIAL OVERVIEW & FLOORPLANS



SUITE A160 - ±2,268 SF



SUITE A180 - ±2,438 SF



This information has been secured from sources believed to be reliable, but no representations or warranties are made, expressed or implied, as to the accuracy of the information. References to square footage are approximate. Buyer and tenant must verify the information and bears all risk for any inaccuracies. All quoted prices are subject to change without notice.

PROPERTY HIGHLIGHTS

- Lease rate of \$16/SF NNN
- Highly desirable Professional Office Suites, Buildings A & F
- Suites sizes range $\pm 2,268$ – $\pm 4,706$ SF
- Union Hills frontage, with Monument Signage available
- Direct access to Loop 101 freeway with Full Diamond interchange
- Located in close proximity to abundant retail and restaurants including Arrowhead Towne Center, Peoria Sports Complex, Arrowhead Community Hospital, and Arrowhead Ranch





A

John H. Bailey, D.D.S., F.A.C.P.

NATE GOLDFARB
480.289.4233
ngoldfarb@levrose.com

This information has been secured from sources believed to be reliable, but no representations or warranties are made, expressed or implied, as to the accuracy of the information. References to square footage are approximate. Buyer and tenant must verify the information and bears all risk for any inaccuracies. All quoted prices are subject to change without notice.