

For Lease

5225 N. CENTRAL AVENUE | PHOENIX, AZ 85012



ZAK KOTTLER
480.294.6003
zkottler@levrose.com

JOE COSGROVE
480.294.6013
jcosgrove@levrose.com

HUNTER CHASSE
480.289.4225
hchasse@levrose.com

LEVROSE
COMMERCIAL REAL ESTATE



PROPERTY SUMMARY

AVAILABILITY:

Suite 208/212: ±4,819 SF*

*Divisible to ±2,116 SF

LEASE RATE:

\$22.50/PSF FULL SERVICE

BUILDING SIZE:

±42,280 SF

PARKING:

4.40 : 1,000 SF

PROPERTY FEATURES

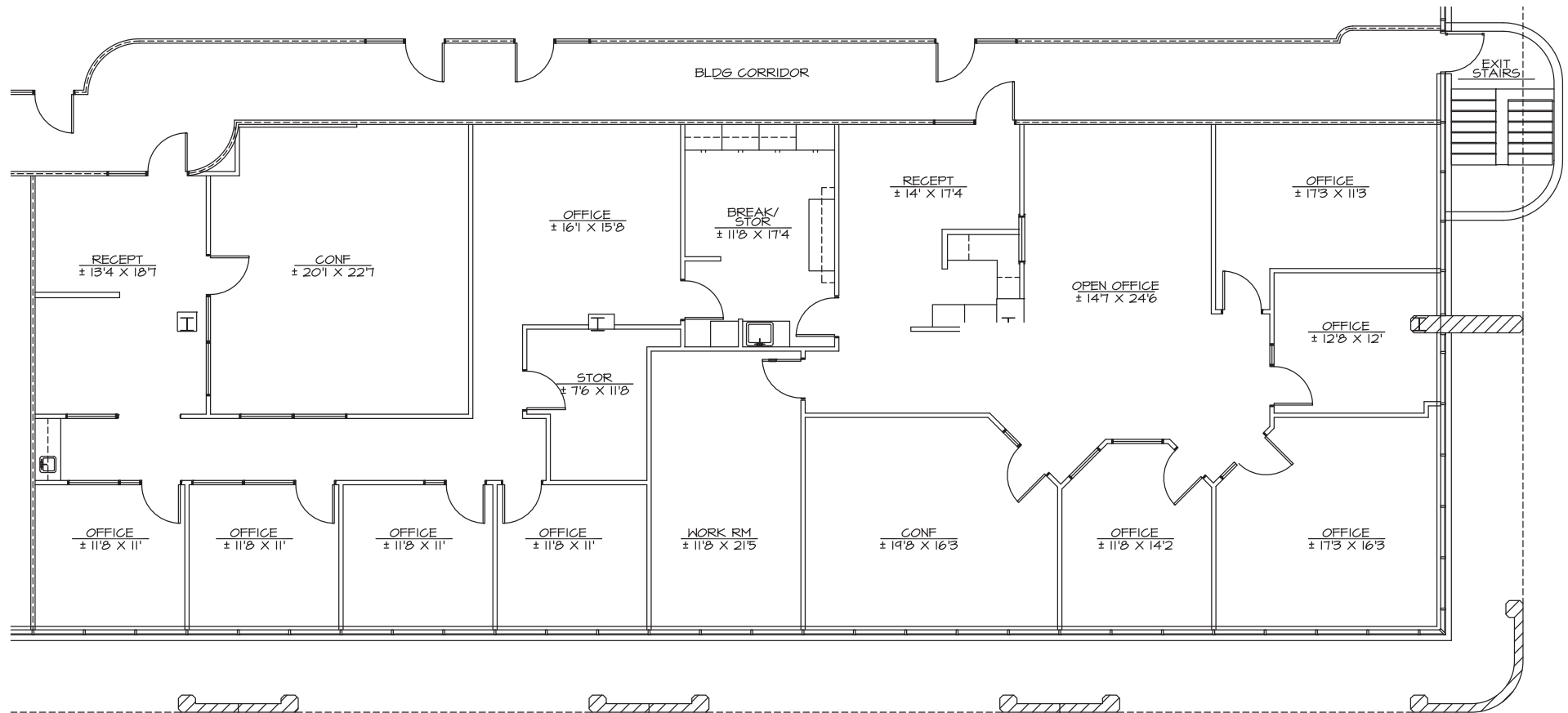
- Located on Central, north of Camelback Road.
- Near local amenities including Biltmore, Promenade and other retail centers, restaurants, hotels and banking.
- Easy access to SR-51 & I-17.
- Zoned C-3.
- Covered parking available; ample pull up parking.
- Monument signage available.



SUITE 208/212 FLOOR PLAN

±4,819 SF

*Divisible to ±2,116 SF



AERIAL



ZAK KOTTLER
480.294.6003
zkottler@levrose.com

JOE COSGROVE
480.294.6013
jcosgrove@levrose.com

HUNTER CHASSE
480.289.4225
hchasse@levrose.com