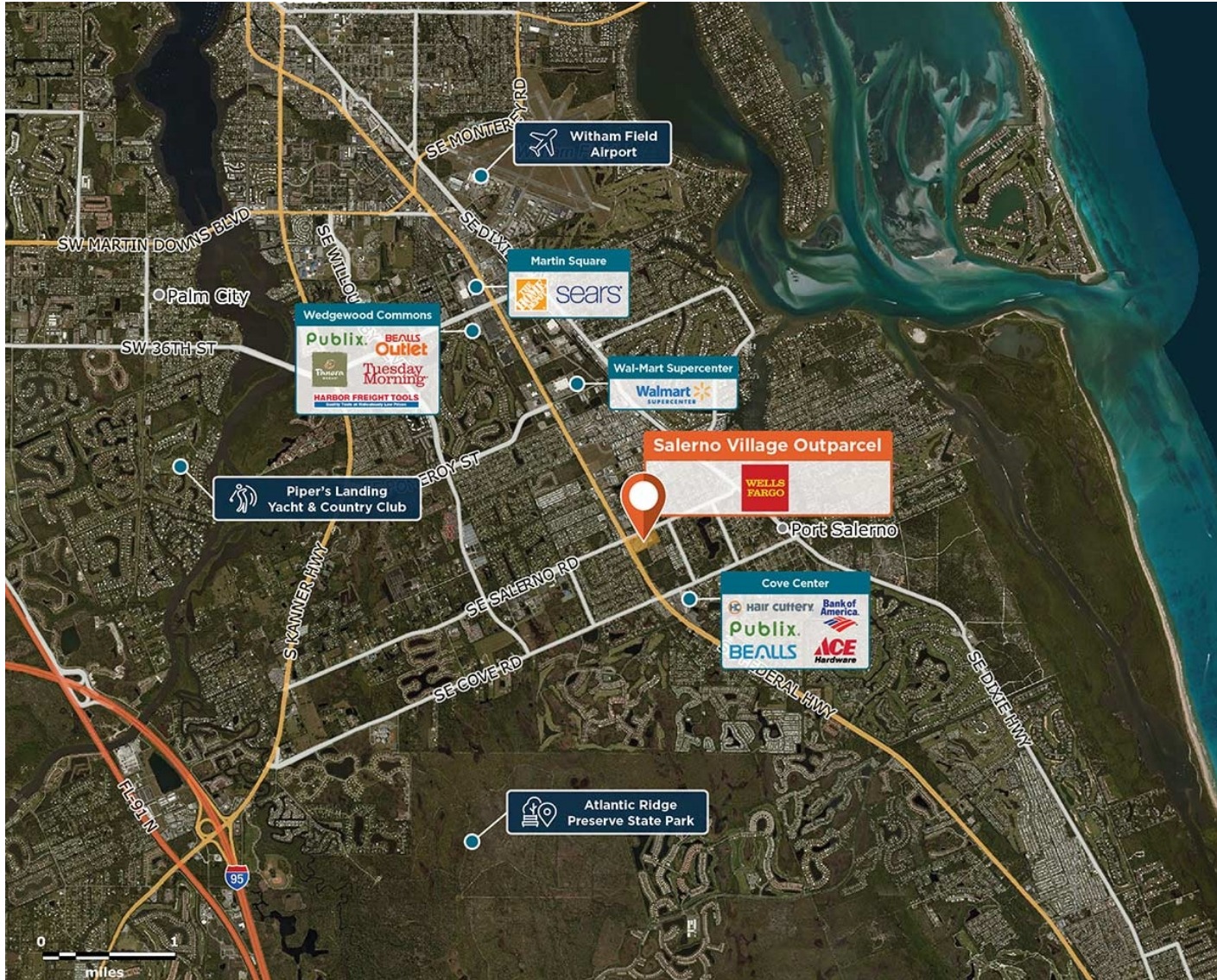


Salerno Village Outparcel

📍 5547 SE Federal Highway, Stuart, FL 34997



A Wells Fargo Bank on SE Federal Highway, near the St. Lucie River and St. Lucie Inlet.

Center Size: 4,800

Spaces Available: 0

Within 3 Miles

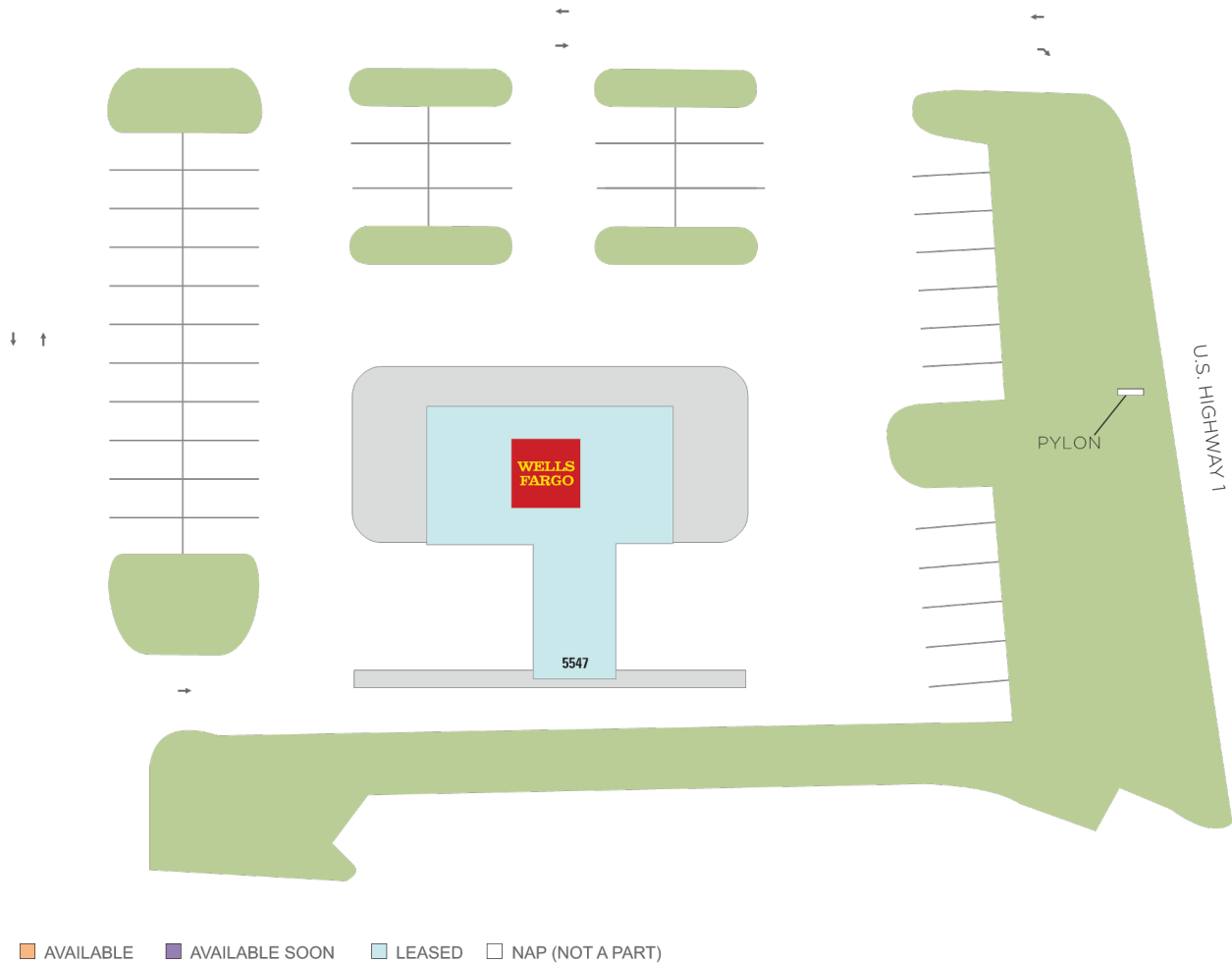
Population	42,600
Avg. Household Income	77,929
Avg. Home Value	530,427
Vehicles Per Day	37,238

Salerno Village Outparcel

📍 5547 SE Federal Highway, Stuart, FL 34997

Center Size: 4,800

SPACE	TENANT	SF
5547	WELLS FARGO BANK	4,800



1 of 1