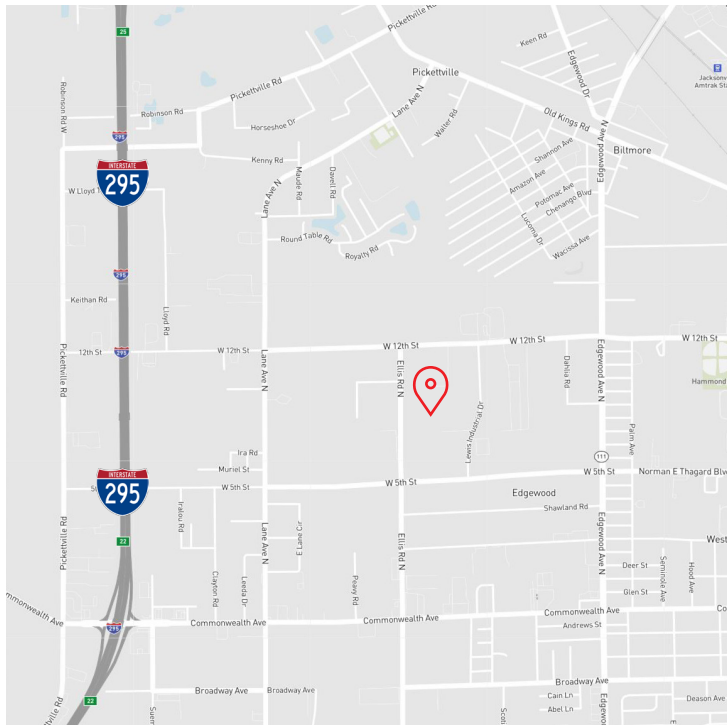


For Sublease

Westside Distribution Center
 2003 N. Ellis Road
 Jacksonville, FL 32254



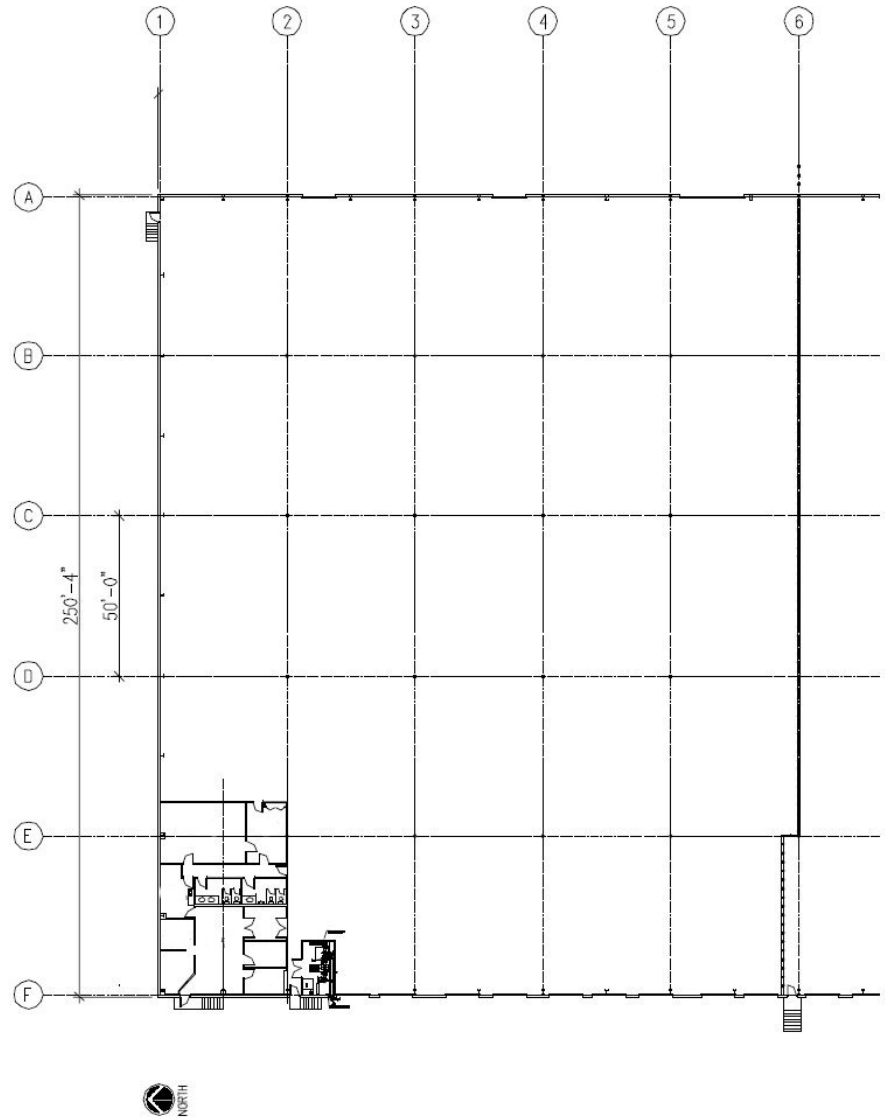
±50,000 s.f. available

Two miles from I-295

Zoning:	Industrial Light
Year built:	1980
Loading doors:	6 (10' x 10') with EOD Levelers
Ramp:	1 (22' x 10')
Clear height:	30'
Lighting:	T5's with motion sensors
Sprinkler:	ESFR
Office:	2,200 s.f.
Truck court:	120'
Column spacing:	40' x 50'
Utilities:	JEA water and sewer
Expiration:	03/31/25

For Sublease

Floorplan



For more information, contact:

Ross Crabtree
+1 904 559 3915
ross.crabtree@am.jll.com

Luke Pope, SIOR
+1 904 356 4550
luke.pope@am.jll.com

DISCLAIMER

Jones Lang LaSalle Brokerage, Inc.
© 2019 Jones Lang LaSalle IP, Inc. Although information has been obtained from sources deemed reliable, neither Owner nor JLL makes any guarantees, warranties or representations, express or implied, as to the completeness or accuracy as to the information contained herein. Any projections, opinions, assumptions or estimates used are for example only. There may be differences between projected and actual results, and those differences may be material. The Property may be withdrawn without notice. Neither Owner nor JLL accepts any liability for any loss or damage suffered by any party resulting from reliance on this information. If the recipient of this information has signed a confidentiality agreement regarding this matter, this information is subject to the terms of that agreement.