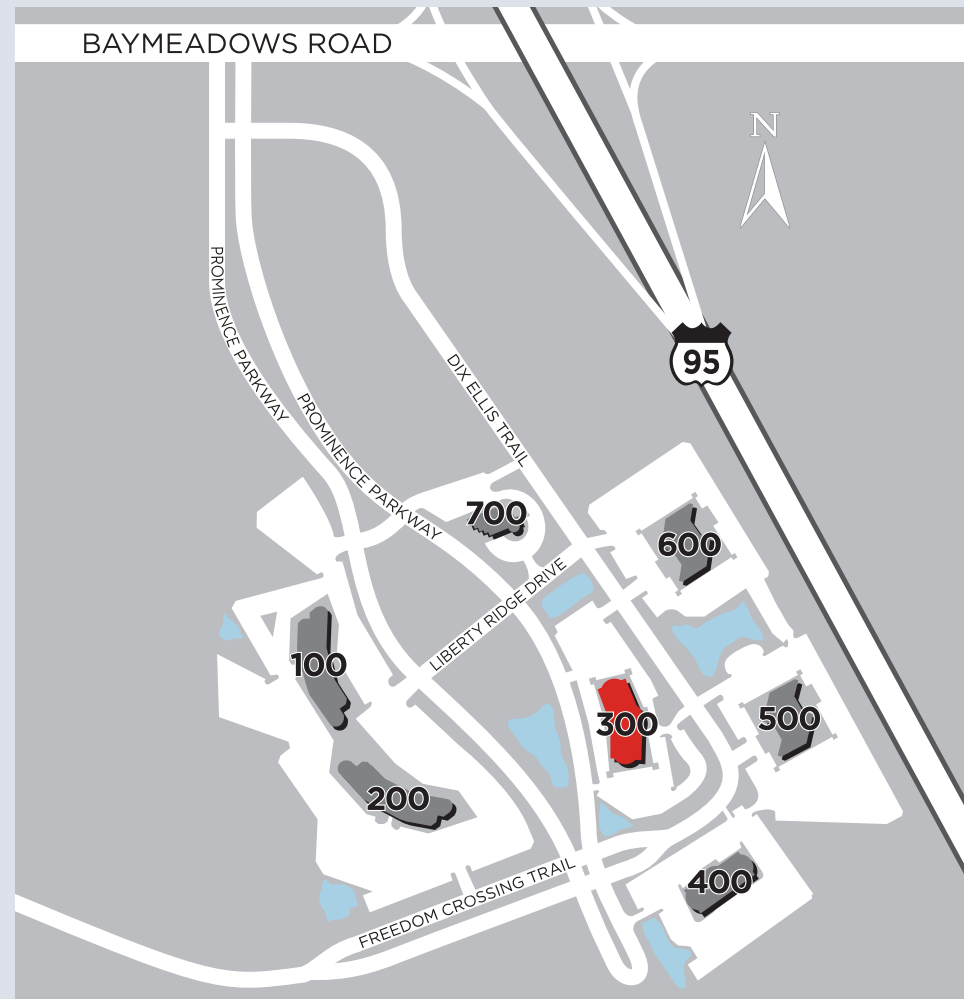




PROMINENCE 300 - 8935 PROMINENCE PKWY.



Prominence is a seven-building office park south of Baymeadows Road and adjacent to Interstate 95

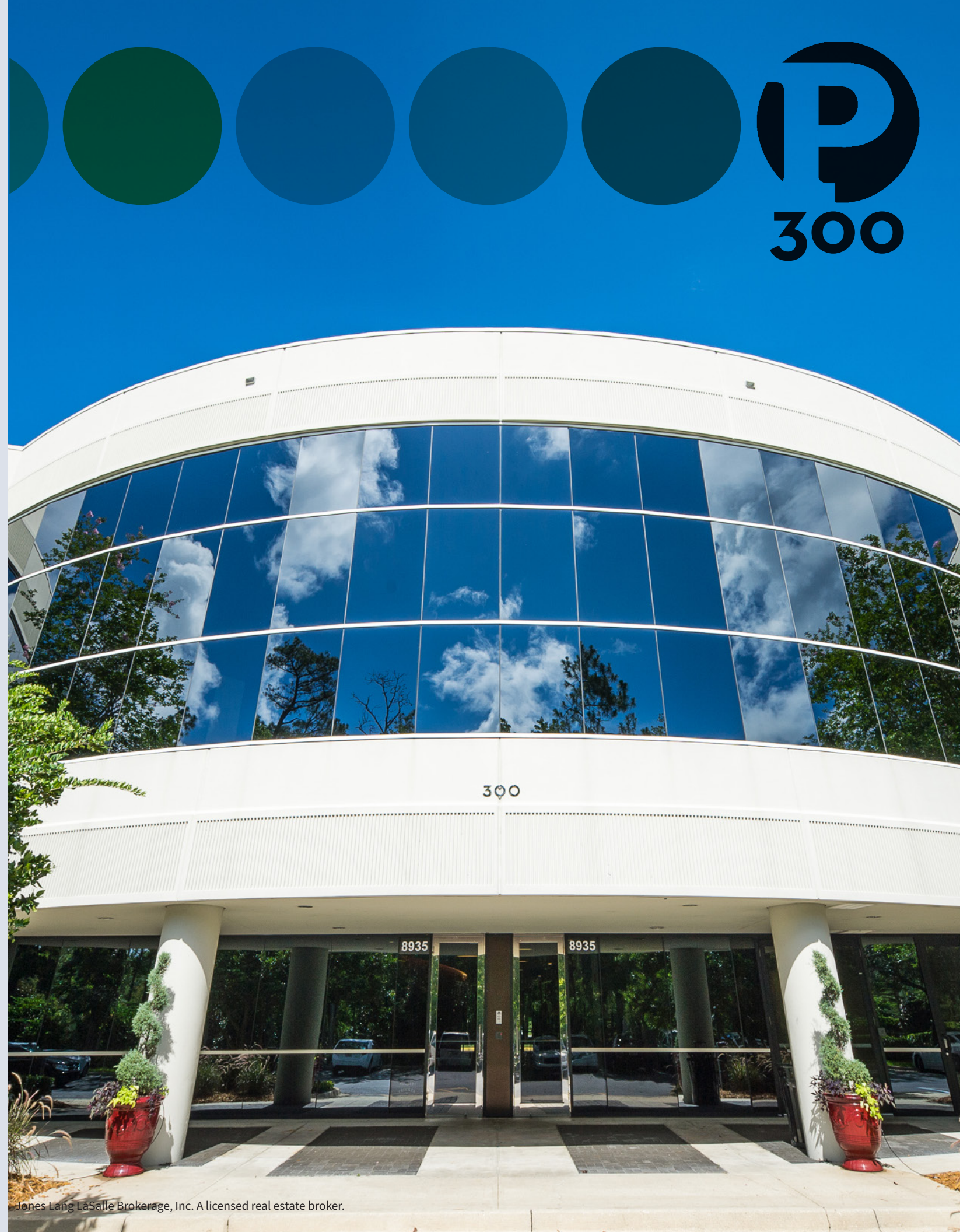
PROMINENCE JACKSONVILLE, FLORIDA

FOR MORE INFORMATION, PLEASE CONTACT,



Michael Loftin
Executive Vice President
+1 904 559 3911
michael.loftin@am.jll.com

Jesse Shimp
Executive Vice President
+1 904 559 3910
jesse.shimp@am.jll.com





On-site conference center



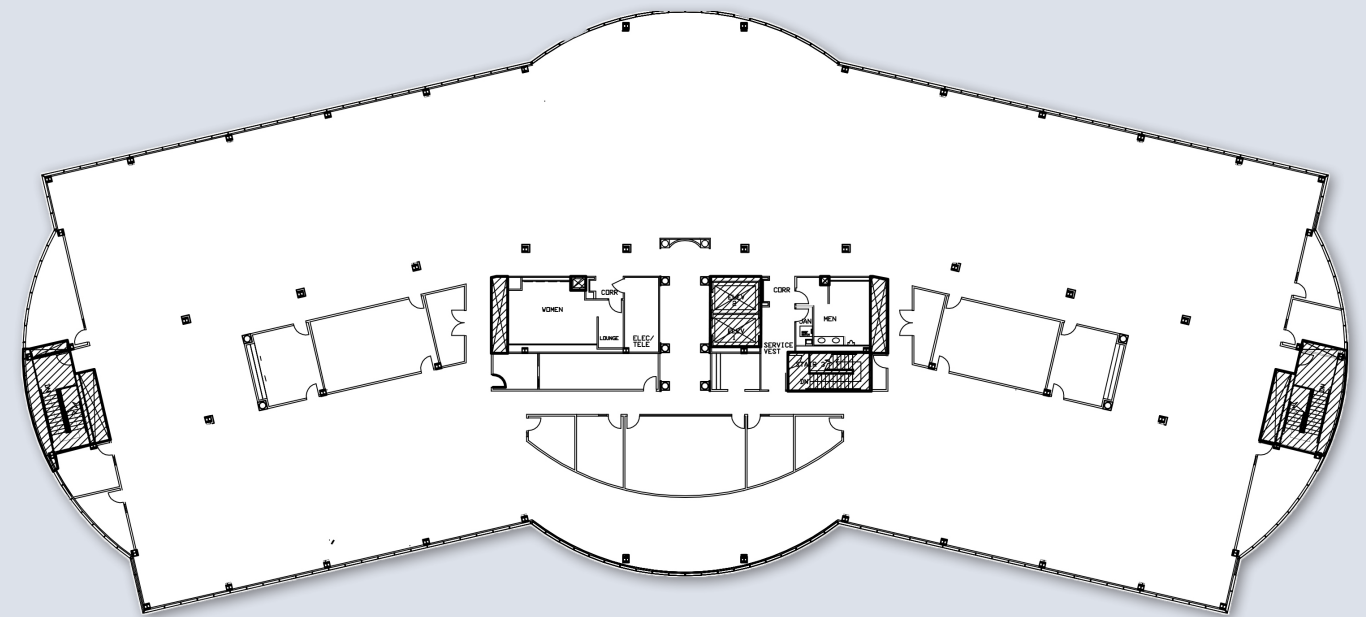
PROPERTY LOCATION

Prominence is a seven-building office park totaling 752,000 s.f. south of Baymeadows Road and adjacent to Interstate 95. Located 10 minutes from the Central Business District, 30 minutes from the Jacksonville International Airport and 30 minutes from the Beach Communities, the property is in close proximity to numerous restaurants and stores along Baymeadows Road. The Avenues Mall is one interchange to the south.

BUILDING FEATURES

- 46,883 r.s.f. on 2 floors
- Building signage available
- Located in a 752,000 s.f. office park
- Large efficient floor plates
- Abundant free parking
- Fiber connectivity
- On-site café and conference center
- Park-like setting with abundant landscaping
- Management office and service personnel on-site

8935 Prominence Pkwy. THIRD FLOOR / PROMINENCE 300



33,088 r.s.f.