

# Palm Beach Marketplace

1900 Okeechobee Boulevard, West Palm Beach, FL



- Located on Okeechobee Blvd immediately west of I-95 in West Palm Beach, Florida
- In close proximity to upscale consumers from neighboring Palm Beach, Downtown West Palm Beach, Palm Beach Lakes/Village Boulevard and the affluent gated communities west on Okeechobee Boulevard.
- Located on a strong restaurant corridor, this center offers excellent co-tenancy and is ideal for premium national and local retailers & restaurants.
- The project features attractive architecture, and excellent visibility and signage.

## Demographics (7-min drivetime)



**Population:**  
83,407



**Daytime Population:**  
78,202



**Median Age:**  
38.5



**Average Household Income:**  
\$63,527

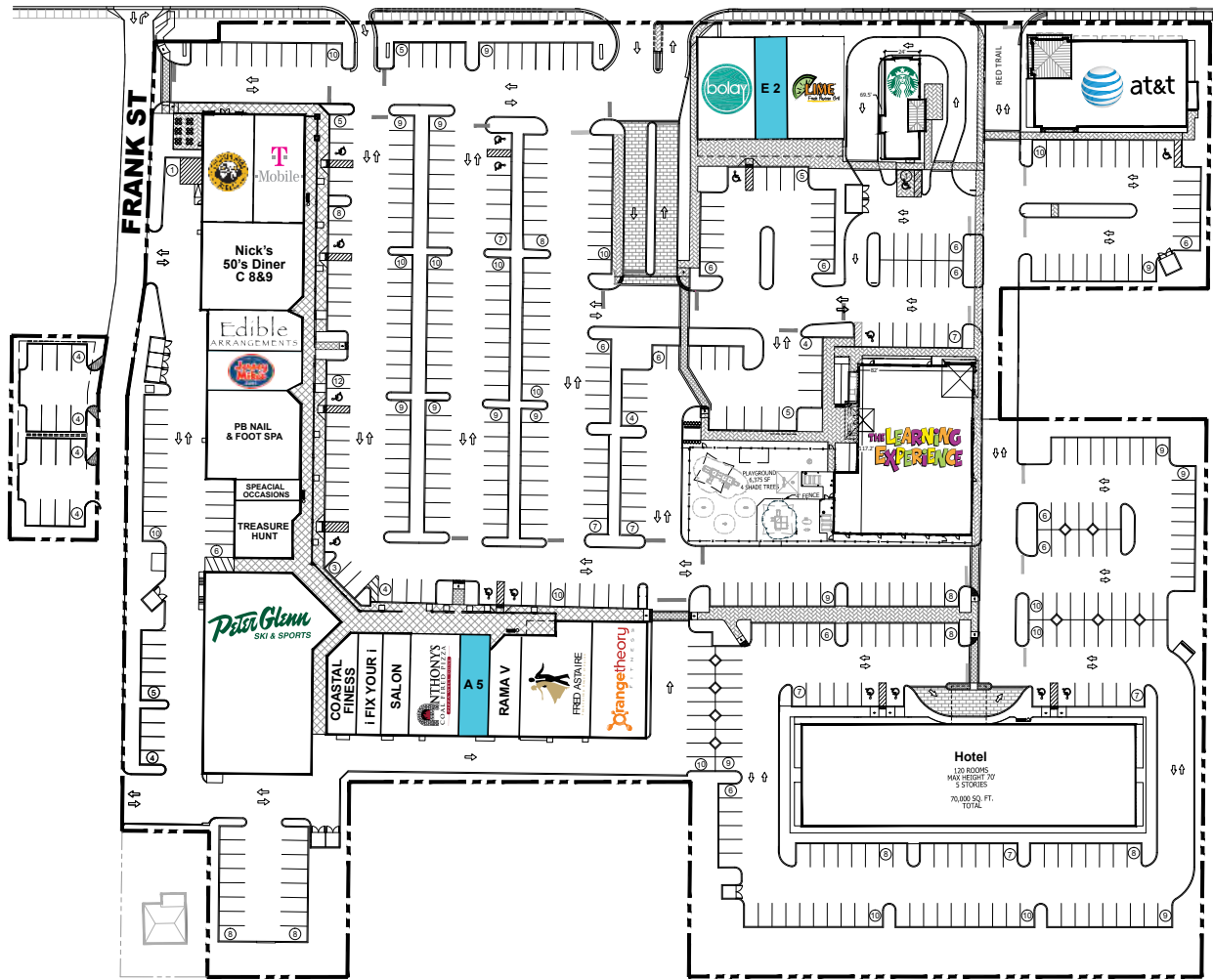
Available	2,900 sf
Rent	Negotiable

**Alfredo Sanchez**  
Associate  
561 721 7027  
alfredo.sanchez@avisonyoung.com

**Brian Richardson**  
Principal  
305 504 2047  
brian.richardson@avisonyoung.com

312 Clematis Street  
Suite 500  
West Palm Beach, FL 33401  
561 721 7000

**OKEECHOBEE BLVD - 65,000 VPD**



AVAILABLE
  LOI

**TENANT INDEX**

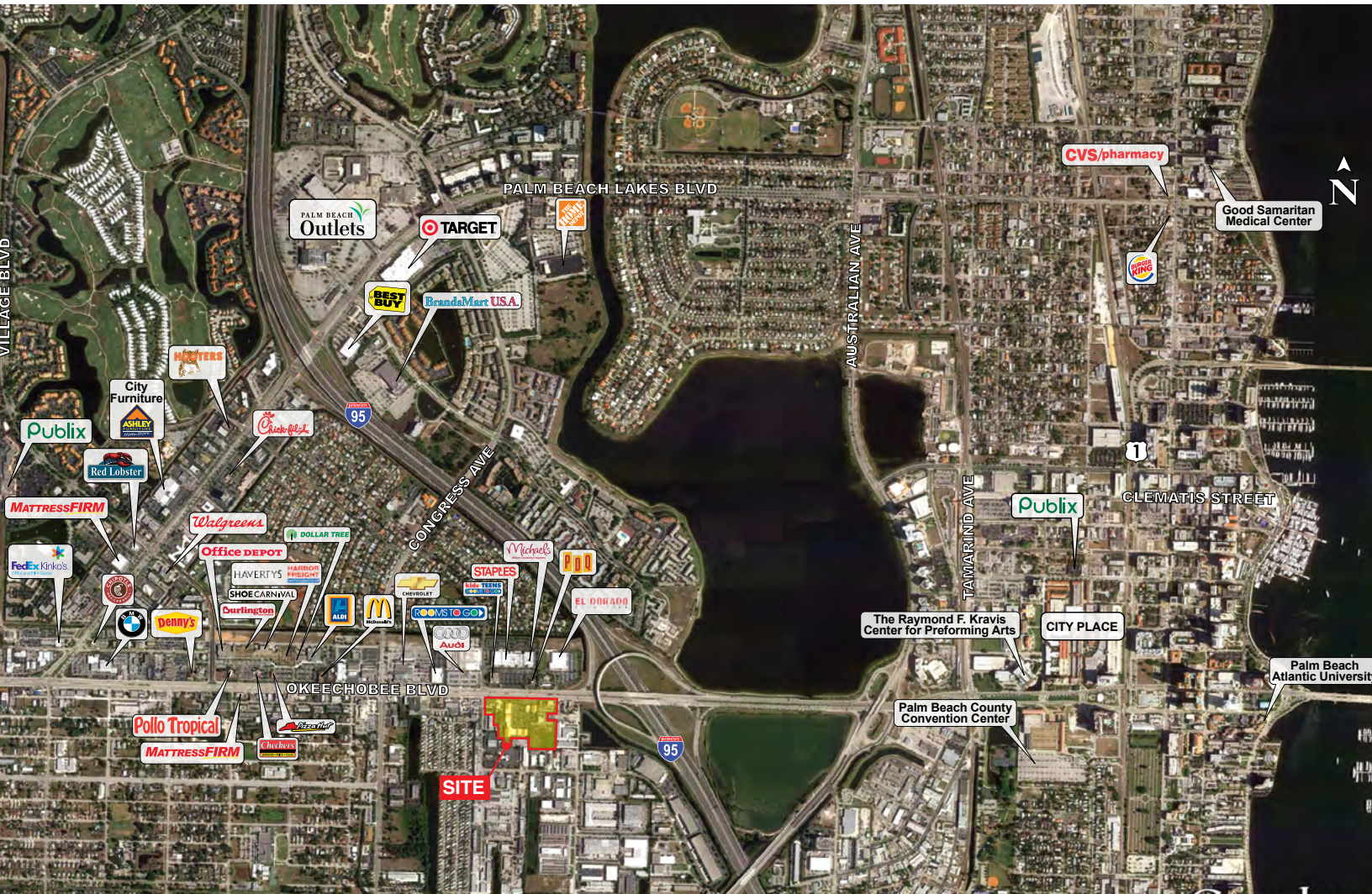
UNIT	TENANT	SIZE	UNIT	TENANT	SIZE
A 1	ORANGE THEORY FITNESS	3,120	C 6	JERSEY MIKE'S	1,730
A 2	FRED ASTAIRE DANCE	2,970	C 7	EDIBLE ARRANGEMENTS	1,770
A 3	RAMA V THAI & SUSHI	2,100	C 8&9	NICK'S DINER	4,150
A 5	AVAILABLE	1,600	C 10	T-MOBILE	2,675
A 6	ANTHONY'S COAL FIRED PIZZA	2,300	C 11	EINSTEIN BAGELS	2,670
A 8	MARK DAVID SALON	984			
A 9	i FIX YOUR i	1,133	E 1	BOLAY	2,350
A 10	COASTAL FITNESS	1,401	E 2	AVAILABLE	1,300
			E 3	LIME	2,350
B	PETER GLENN SKI & SPORT	10,290	F	STARBUCKS	1,770
			G	AT&T	6,465
C 1	PROSPYR JEWELERS	1,700	H	THE LEARNING EXPERIENCE	10,085
C 3	SPECIAL OCCASIONS	675			
C 5	PALM BEACH NAIL & FOOT SPA	3,850			



**Alfredo Sanchez**  
 Associate  
 561 721 7027  
 alfredo.sanchez@avisonyoung.com

**Brian Richardson**  
 Principal  
 305 504 2047  
 brian.richardson@avisonyoung.com

avisonyoung.com



**AVISON  
YOUNG**

**DEZIEL COMPANY**  
Developing Branded Real Estate

avisonyoung.com

**Alfredo Sanchez**

Associate  
561 721 7027  
alfredo.sanchez@avisonyoung.com

**Brian Richardson**

Principal  
305 504 2047  
brian.richardson@avisonyoung.com



**AVISON  
YOUNG**

**DEZIEL COMPANY**  
Developing Branded Real Estate

[avisonyoung.com](http://avisonyoung.com)

**Alfredo Sanchez**  
Associate  
561 721 7027  
[alfredo.sanchez@avisonyoung.com](mailto:alfredo.sanchez@avisonyoung.com)

**Brian Richardson**  
Principal  
305 504 2047  
[brian.richardson@avisonyoung.com](mailto:brian.richardson@avisonyoung.com)