



400 & 430 Douglas Road East, Oldsmar, FL

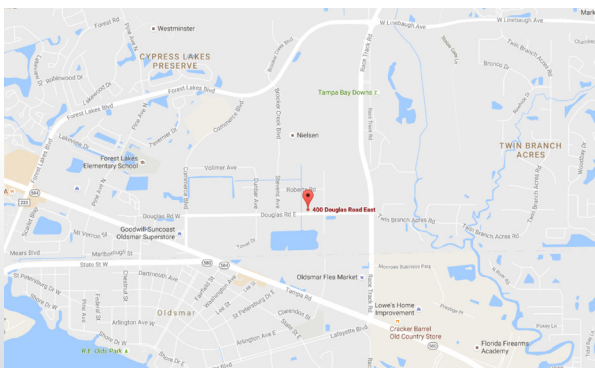
4,500 SF space available with 2 roll up doors and paint booth. Prime Tri-county location.

BUILDING SPECIFICATIONS

Property Type	Industrial
Lease/For Sale	Lease
Building, Sq. Ft.	4,500 SF

PROPERTY HIGHLIGHTS

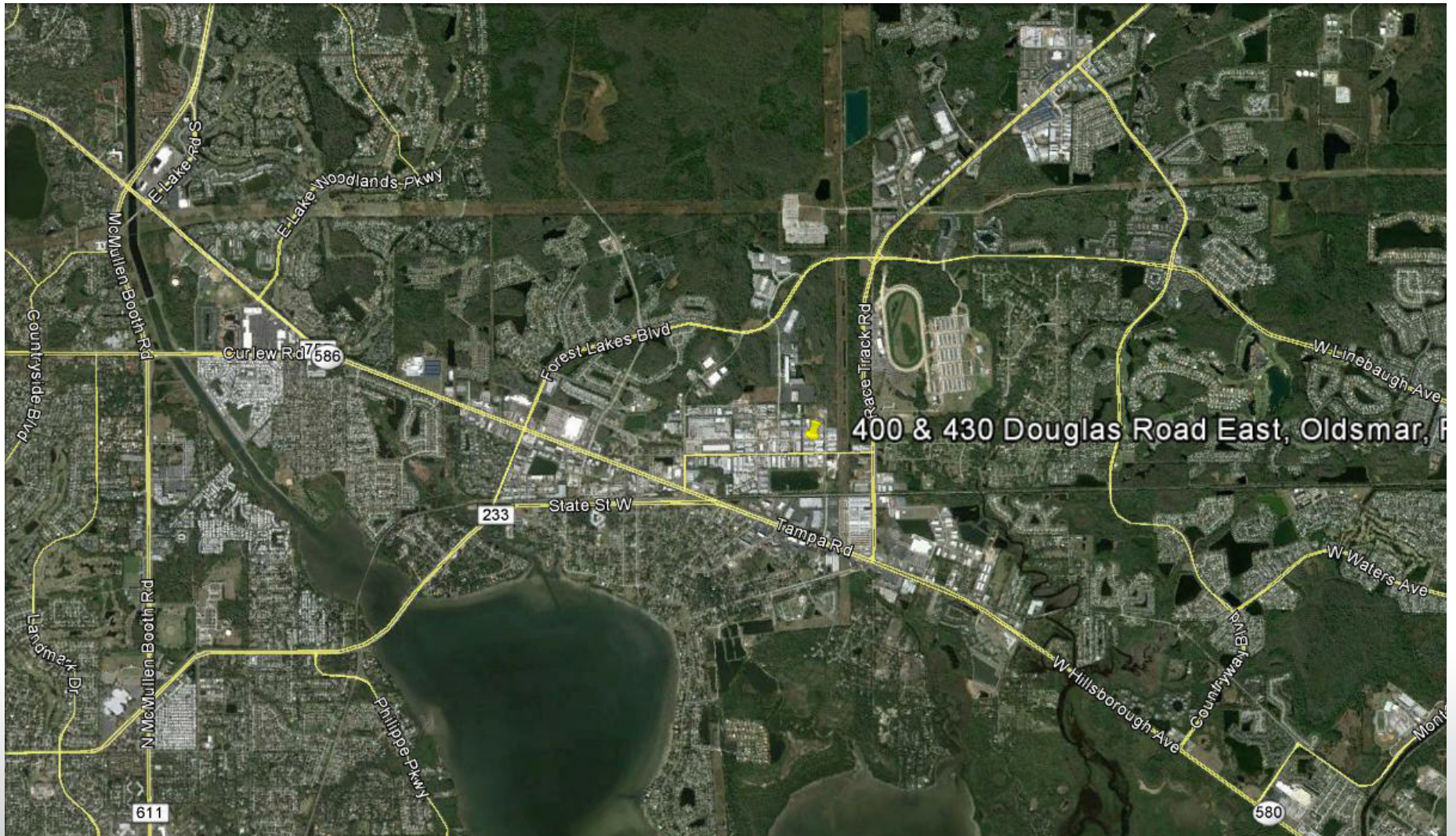
- 4,500 SF space available
- 2 Roll up doors
- Paint Booth
- Prime Tri-county location



ASSIGNED AGENTS

Dave Sarich | dsarich@thekraussorg.com
 Office: (813) 885-5656
 Cell: (813) 505-0695

AERIAL



400 & 430 Douglas Road East, Oldsmar, FL

AERIAL

