

For Sale  
**23,603 SF**  
**± 2.35 Acres**



## 2411 Minnis Drive Haltom City, Texas 76117

### Property Features

- ± 8,889 SF Office Space (Includes Mezzanine Office Space)
- ± 20' Clear Height
- 2 (16' x 20') Drive-In Doors
- 3 Phase Power
- Fenced and Surfaced Yard
- Wash Bay Available
- Security System
- Covered Storage
- Easy Access to State Highway 121, Loop 820 & I-35W
- Zoned M-1 Industrial



*Building Square Footage is based upon the drawing provided by Seller and should be independently verified by Buyer.*

**Todd Hubbard, SIOR**

817 872 3901  
thubbard@robertlynn.com



THE INFORMATION CONTAINED HEREIN HAS BEEN GIVEN TO US BY THE OWNER OF THE PROPERTY OR OTHER SOURCES WE DEEM RELIABLE. WE HAVE NO REASON TO DOUBT ITS ACCURACY, BUT WE DO NOT GUARANTEE IT. ALL INFORMATION SHOULD BE VERIFIED PRIOR TO PURCHASE OR LEASE.

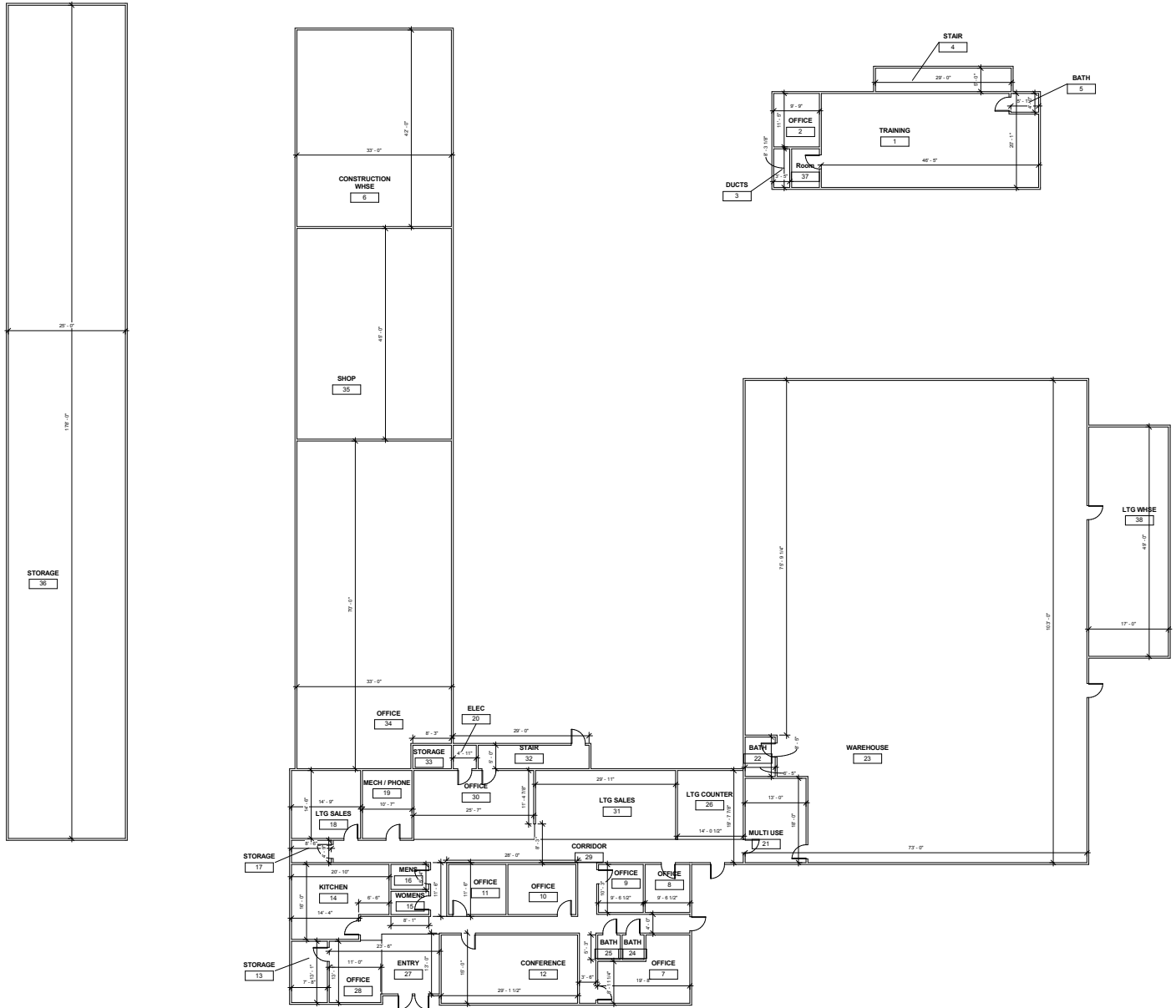
1200 Summit Avenue Suite 800  
Fort Worth TX 76102  
817 885 8333

[nairl.com](http://nairl.com)

For Sale  
**23,603 SF**  
± 2.35 Acres

**2411 Minnis Drive**  
Haltom City, Texas 76117

## Floor Plan



Bradley Ave

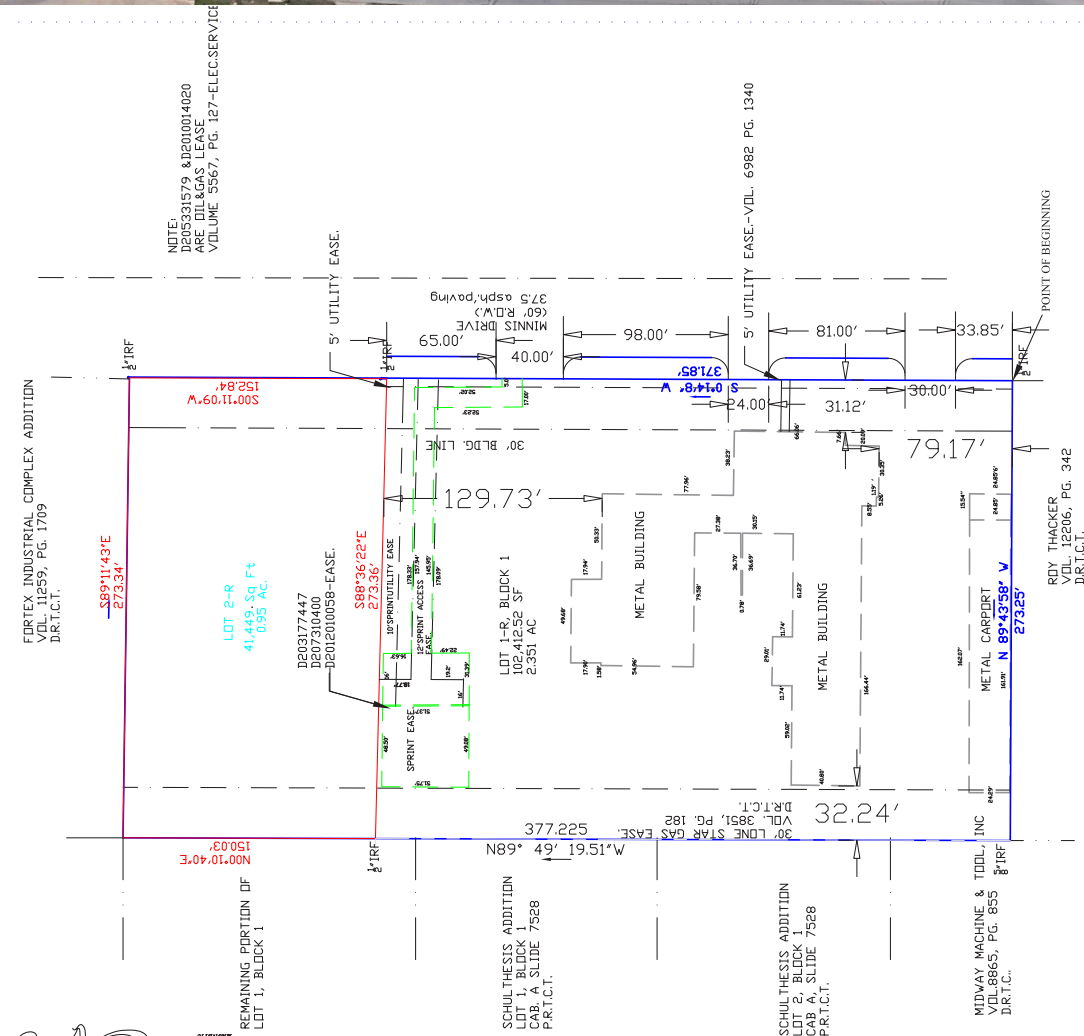
Weaver St

Minnis Dr

Midway Rd

SITE

# Survey



For Sale  
**23,603 SF**  
± 2.35 Acres

**2411 Minnis Drive**  
Haltom City, Texas 76117

