

For Lease

11,462 SF



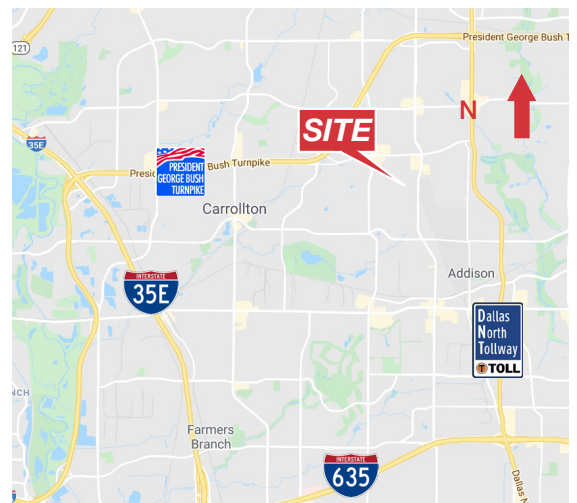
**3215 Skylane Drive, Suite 120**  
Carrollton, Texas 75006

## Property Features

- ± 10% Office Finish
- ± 20'-22' Clear Height
- Sprinklered
- YOC - 2008
- ± 39.5' x 31.5' Column Spacing
- 1 Dock High Door
- 1 Ramped Door
- ± 125' Truck Court Depth

**Chad Albert, SIOR**

214 256 7135  
calbert@robertlynn.com



THE INFORMATION CONTAINED HEREIN HAS BEEN GIVEN TO US BY THE OWNER OF THE PROPERTY OR OTHER SOURCES WE DEEM RELIABLE. WE HAVE NO REASON TO DOUBT ITS ACCURACY, BUT WE DO NOT GUARANTEE IT. ALL INFORMATION SHOULD BE VERIFIED PRIOR TO PURCHASE OR LEASE.

4851 LBJ Freeway 10<sup>th</sup> Floor  
Dallas TX 75244  
214 256 7100

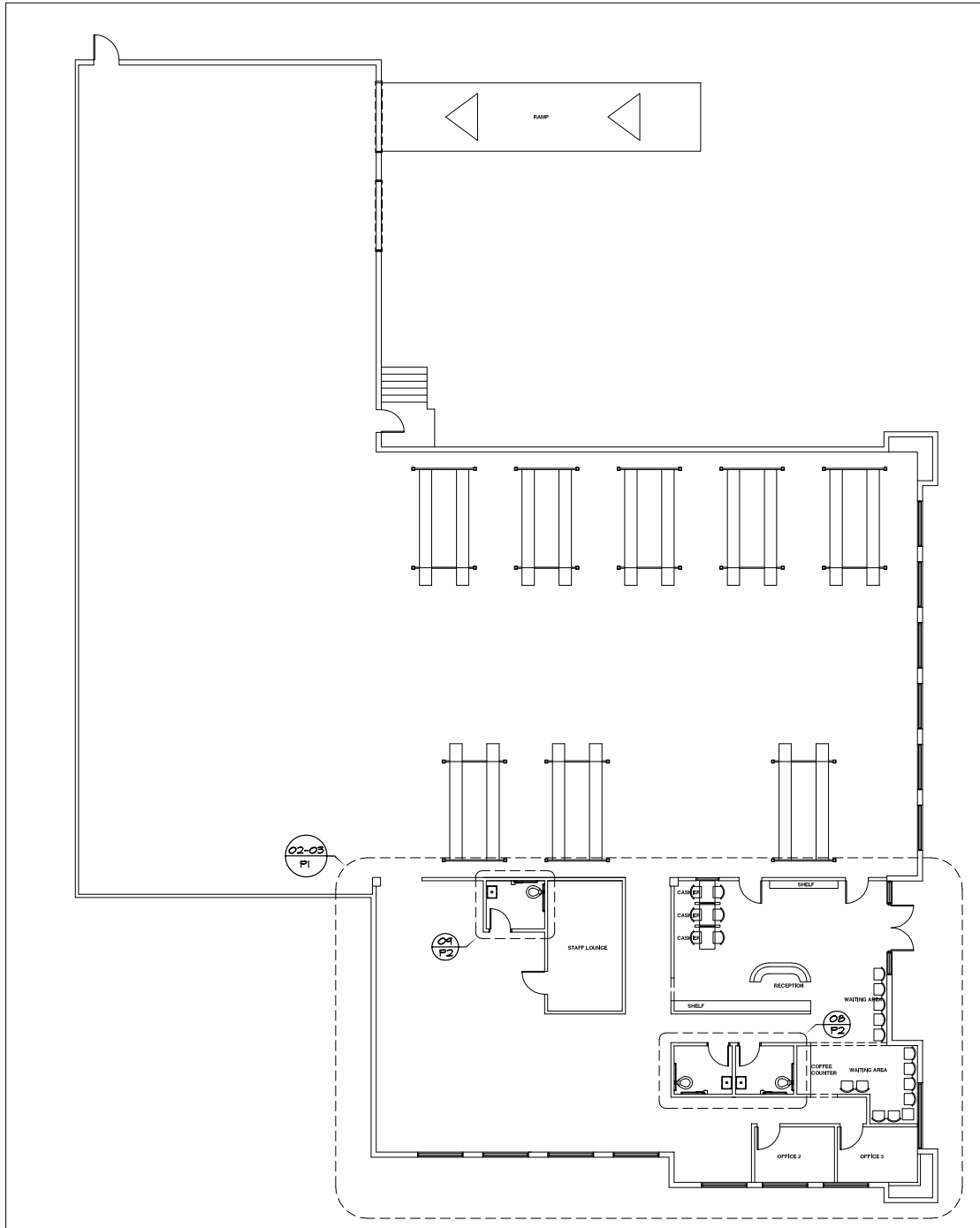
[nairl.com](http://nairl.com)

For Lease

11,462 SF

3215 Skylane Drive, Suite 120

Carrollton, Texas 75006



Building Layout