

For Sublease
15,536 SF

**Price
Reduced!**

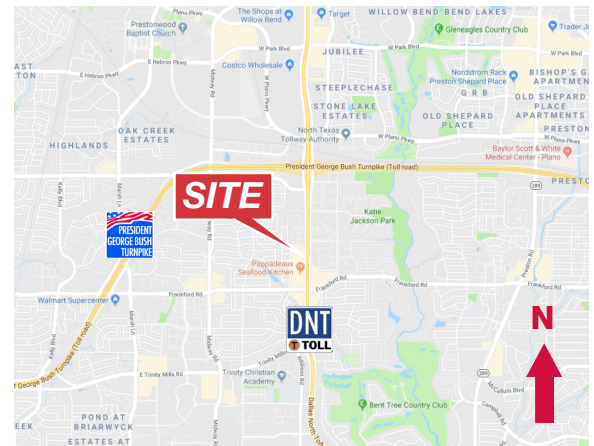


Gramercy Center North 18583 Dallas Pkwy. Suite 120

Dallas, Texas 75287

Property Features

- Lease Rate: \$17.00/SF + E
- Term Through February 28, 2022
- Available Immediately
- Aggressive Rental Rate
- Open Layout With Reception Area, 15 Private Offices, 1 Executive Suite, Conference Room and Break Room
- Great Access at the Intersection of President George Bush and Dallas North Tollway



Brett Bofinger

214 256 7179
bbofinger@robertlynn.com

Justin Utay

214 256 7166
jcutay@robertlynn.com



THE INFORMATION CONTAINED HEREIN HAS BEEN GIVEN TO US BY THE OWNER OF THE PROPERTY OR OTHER SOURCES WE DEEM RELIABLE. WE HAVE NO REASON TO DOUBT ITS ACCURACY, BUT WE DO NOT GUARANTEE IT. ALL INFORMATION SHOULD BE VERIFIED PRIOR TO PURCHASE OR LEASE.

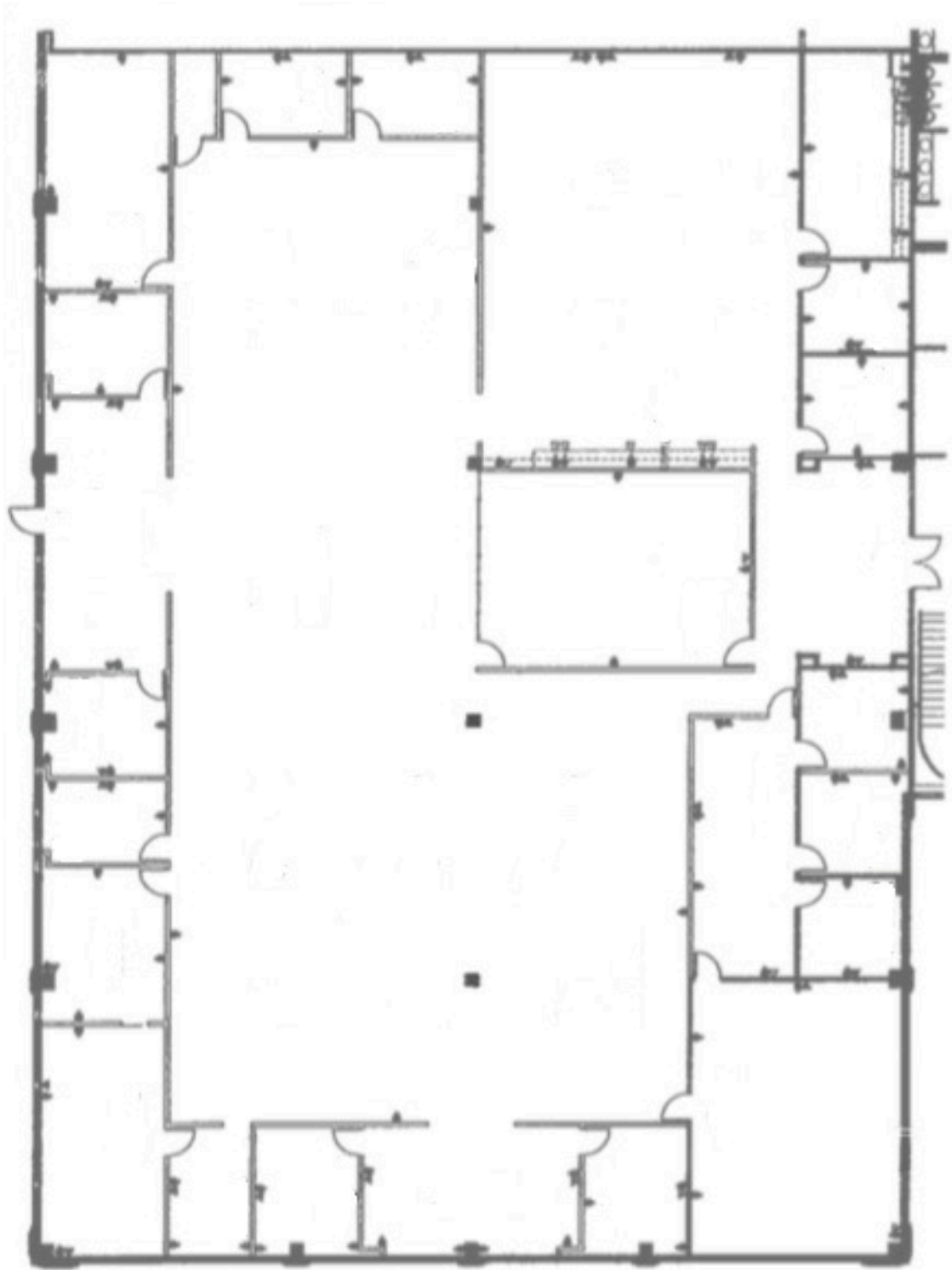
4851 LBJ Freeway 10th Floor
Dallas TX 75244
214 256 7100

nairl.com

For Sublease

15,536 SF

Gramercy Center North
18583 Dallas Pkwy. Suite 120
Dallas, Texas 75287



For Sublease

15,536 SF

Gramercy Center North

18583 Dallas Pkwy. Suite 120
Dallas, Texas 75287

