

4851 LBJ

BRINSON

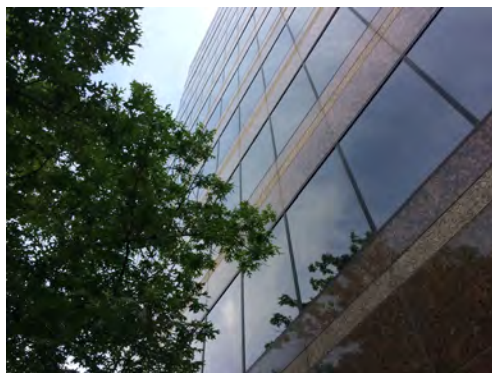
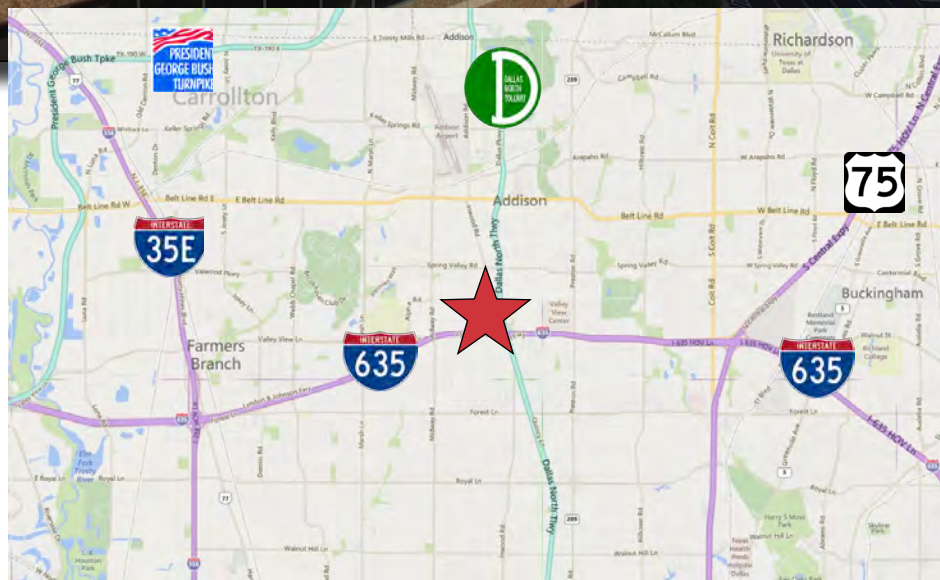
NAI ROBERT LYNN

NAI Robert Lynn



MOHR
CAPITAL

4851 LBJ Freeway
Dallas, TX 75244



Property Overview

4851 LBJ is an upscale twelve-story, Class A office building strategically located on the Northwest corner of the Dallas North Tollway & I-635. Within walking distance to The Galleria Mall and its many restaurants, shopping centers, and hotels. Both DFW International Airport and Love Field are only twenty minutes away. 4851 LBJ just underwent major renovations including common area updates, new lobby finishes, a new Fitness Center, a new Tenant Lounge, an updated Conference Center, and brand new elevators.

Property Features & Amenities

Great Access to Dallas North Tollway & I-635

Walking distance to Galleria Mall

On-Site Property Management

On-Site Security Officer

Building Conference Center

Full-Service Delicatessen

Fitness Center

3:1000 Underground Parking

Building Signage Available

Janitorial Service Provided

Tenant Lounge with WiFi

Spec Suites Available

Click <https://www.4851bj.com/> for more info.



Telecom Providers

AT&T

Time Warner

Logix

Available Suites

Suite 100	6,880 SF	Suite 560	2,890 SF
Suite 150	1,568 SF	Suite 600	8,191 SF
Suite 325	2,249 SF	Suite 850	2,297 SF
Suite 425	2,243 SF	Suite 875	1,787 SF
Suite 500	4,821 SF	Suite 900	12,323 SF
		Suite 1125	2,117 SF

For Information, Please Contact:

James Davis

214 256 7103 • jdavis@robertlynn.com

Grant Frerichs

214 256 7146 • gfrerichs@robertlynn.com

Thomas T. Lynn, SIOR

214 256 7123 • tlynn@robertlynn.com



Available Suites

