



FOR SALE

9.489 ACRES - NORTHBOUND IH35 AT VER-LO
LORENA, TX

SALE



OFFERING SUMMARY

Sale Price: \$950,000

Lot Size: 9.49 Acres
Can be divided

Zoning: IC-Interstate 35
Planned Corridor

Price / SF: \$2.30

PROPERTY OVERVIEW

Development site in the Heart of Lorena Texas on the Northbound IH35 access road. Located midway between Waco, TX and Temple, TX, the site is prime for a mixed-use commercial/hotel/residential development with approx 600 ft frontage on the IH35 access road and approx 800 ft frontage on Ver-Lo Drive.

PROPERTY HIGHLIGHTS

- Great Exposure
- Located between Waco, TX and Temple, TX
- City of Lorena utilities
- Approx 600 ft frontage on I-35 frontage road
- Approx 800 ft frontage on Ver-Lo

CBCWORLDWIDE.COM

Brad Davis, CCIM
254 313 0000
braddavis@jrwaco.com



**COLDWELL
BANKER
COMMERCIAL**

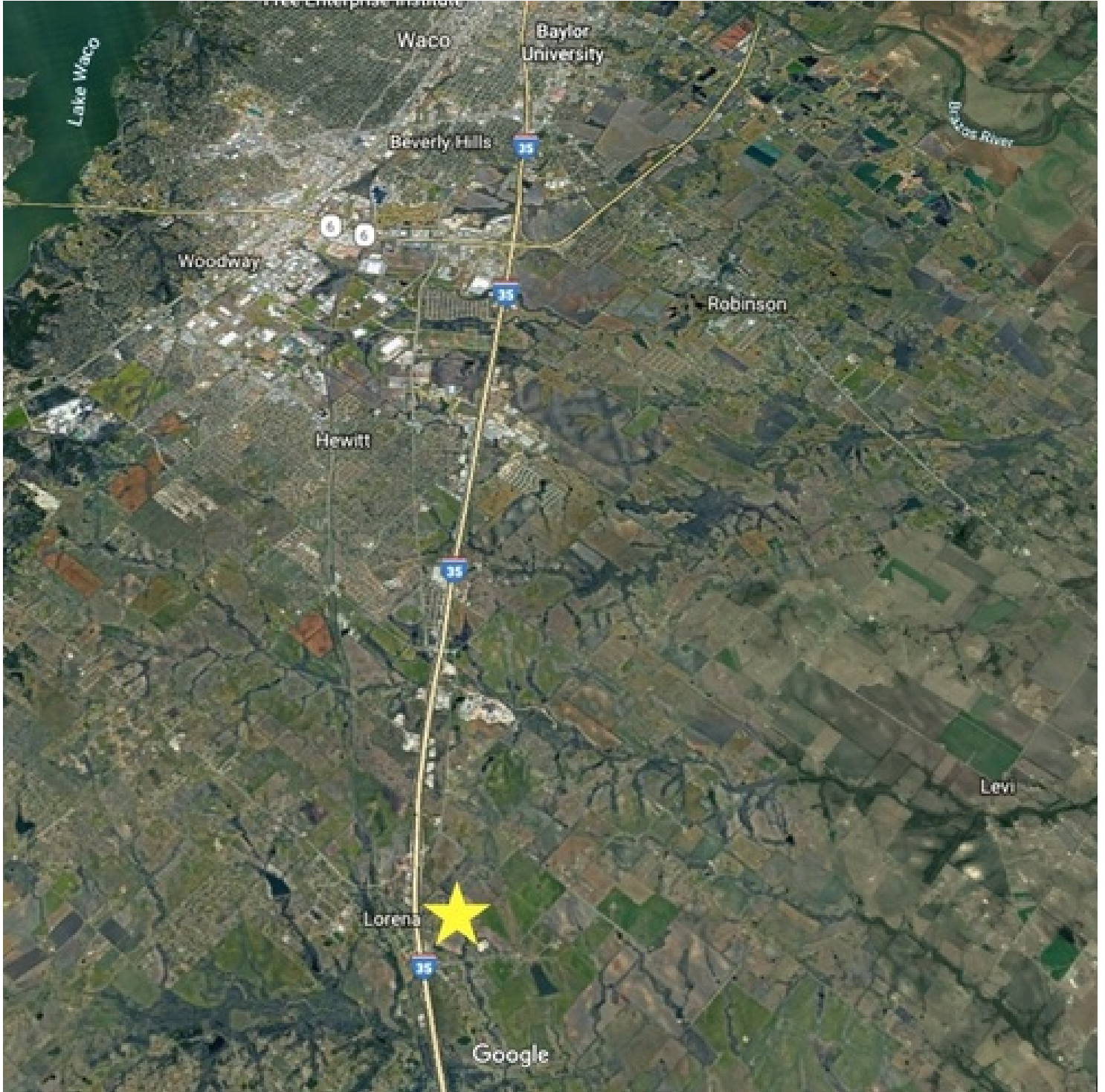
JIM STEWART, REALTORS®



SALE

9.489 ACRES - NORTHBOUND IH35 AT VER-LO

Lorena, TX 76655



CBCWORLDWIDE.COM

Brad Davis, CCIM
254 313 0000
braddavis@jswaco.com



**COLDWELL
BANKER
COMMERCIAL**

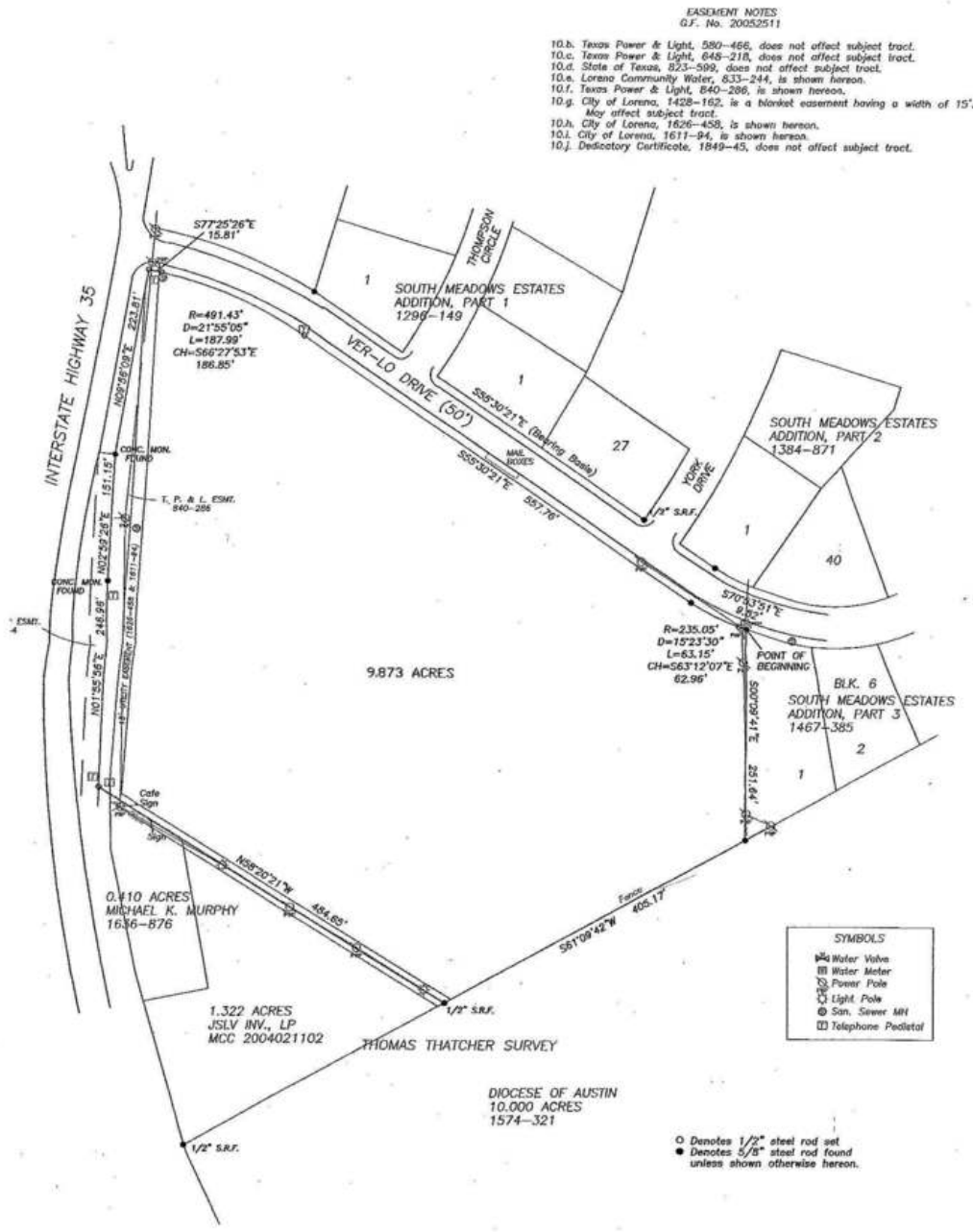
JIM STEWART, REALTORS®



SALE

9.489 ACRES - NORTHBOUND IH35 AT VER-LO

Lorena, TX 76655



CBCWORLDWIDE.COM

Brad Davis, CCIM
254 313 0000
braddavis@jrwaco.com

**COLDWELL
BANKER
COMMERCIAL**

JIM STEWART, REALTORS®

