

LONG JOHN SILVERS

HOUSTON, TX | NEQ HARRISBURG BOULEVARD AND S. 69TH STREET | 6929 HARRISBURG BOULEVARD



PLEASE DO NOT DISTURB—TENANT STILL OPERATING

SIZE: 2,127 SF | BUILDING
0.66 ACRES | LOT

RATES: CALL FOR RATES

TAXES: \$4,543.20

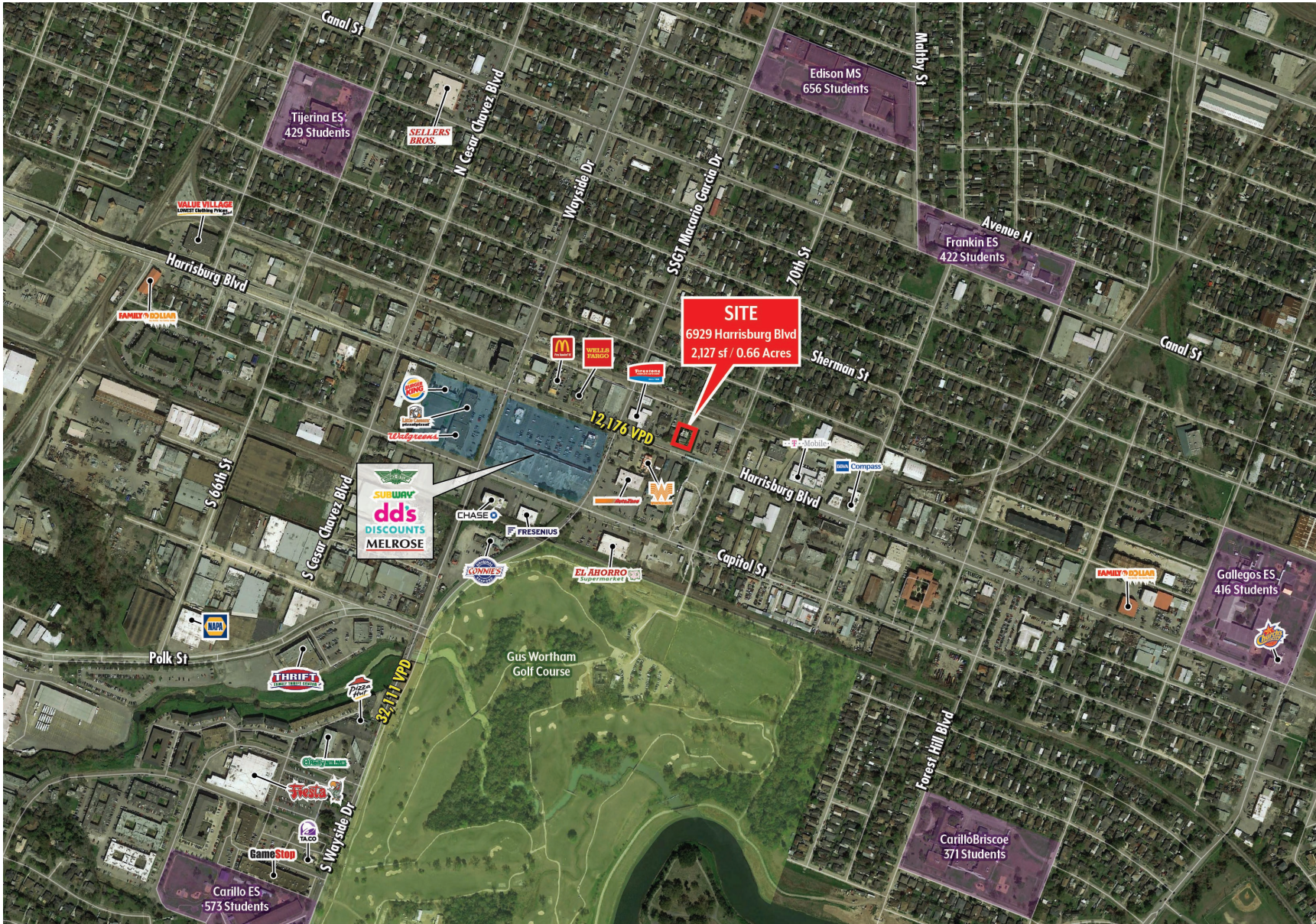
AREA RETAILERS:

DEMOGRAPHICS:	1 MILE	3 MILE	5 MILE
2019 Population	19,358	120,053	335,486
2019 Total Households	5,881	37,087	111,132
2019 Daytime Population	17,796	148,195	516,647
2019 Average HH Income	\$45,343	\$52,521	\$64,044

TRAFFIC COUNTS:
Harrisburg Boulevard: 12,176 VPD
S. Wayside Drive: 32,111 VPD

LONG JOHN SILVERS

HOUSTON, TX | NEQ HARRISBURG BOULEVARD AND S. 69TH STREET | 6929 HARRISBURG BOULEVARD



LONG JOHN SILVERS

HOUSTON, TX | NEQ HARRISBURG BOULEVARD AND S. 69TH STREET | 6929 HARRISBURG BOULEVARD



