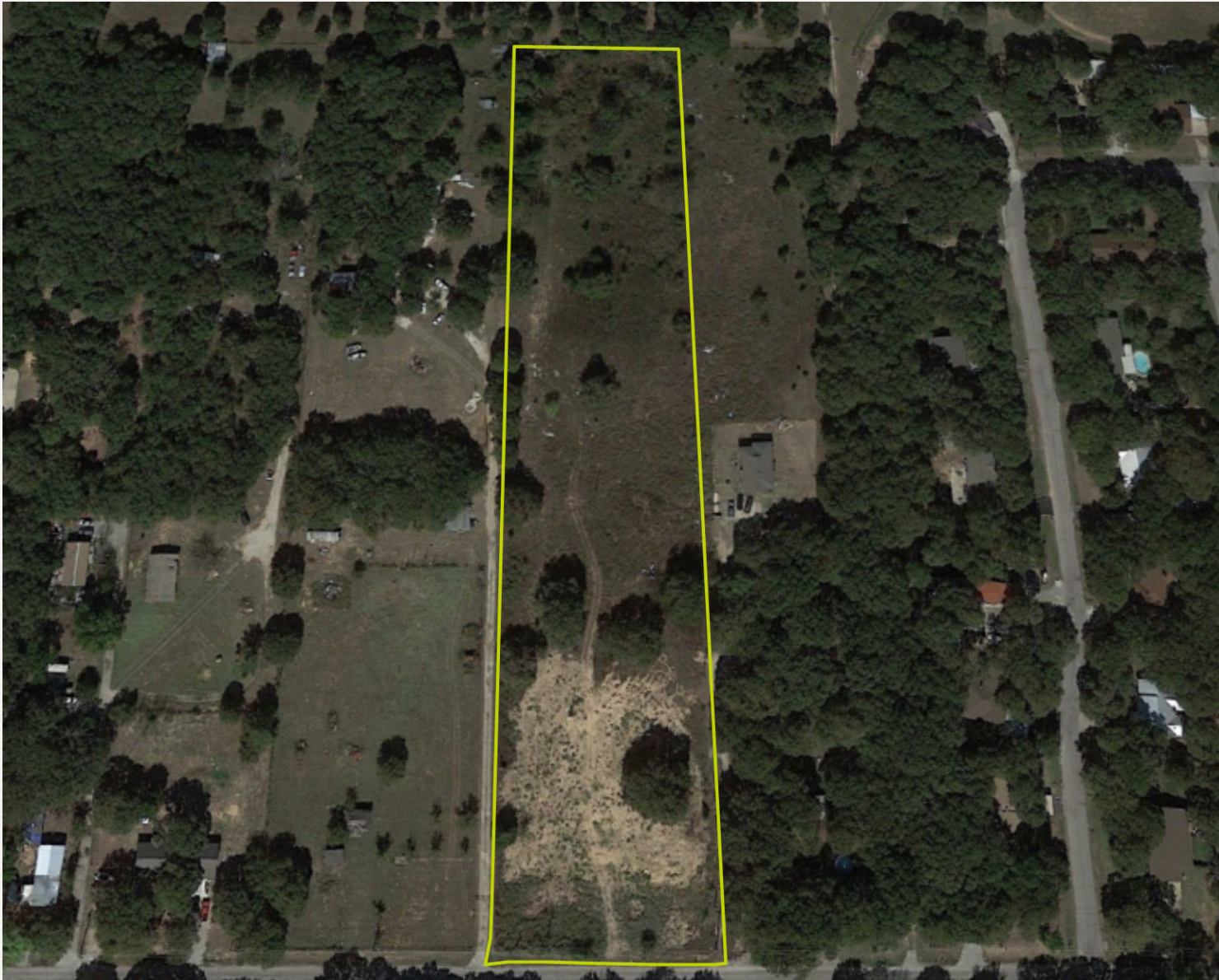


5.36 Acres For Sale

7760 Portwood Road
Azle, TX 76020



LANCARTE
COMMERCIAL

Daniel Shelley
dshelley@lancartecre.com
512-461-5363

LanCarteCRE.com
209 N. Hampton Street
Fort Worth, TX 76102

5.36 Acres For Sale

7760 Portwood Road
Azle, TX 76020



SALE PRICE

\$199,900.00

PROPERTY FEATURES

- 5.36 Acres
- New Perimeter Fence
- North East Eagle Mountain Lake
- No Zoning Restrictions
- Trimmed Trees
- Road Base for Additional Parking

LOCATION HIGHLIGHTS

- Unincorporated
- Azle ISD

Daniel Shelley
dshelley@lancartecre.com | 512-461-5363

LanCarteCRE.com
209 N. Hampton Street | Fort Worth, TX 76102

The information provided herein was obtained from sources believed to be reliable. However, LanCarte Commercial makes no guaranties, warranties or representations as to the completeness or accuracy thereof. The presentation of this property is submitted subject to errors, omissions, change of price or conditions, prior to sale or lease, or withdrawal without notice. Copyright 2020 LanCarte Commercial Real Estate, Inc.





LANCARTE

COMMERCIAL

Daniel Shelley
dshelley@lancartecre.com | 512-461-5363

LanCarteCRE.com
209 N. Hampton Street | Fort Worth, TX 76102

The information provided herein was obtained from sources believed to be reliable. However, LanCarte Commercial makes no guaranties, warranties or representations as to the completeness or accuracy thereof. The presentation of this property is submitted subject to errors, omissions, change of price or conditions, prior to sale or lease, or withdrawal without notice. Copyright 2020 LanCarte Commercial Real Estate, Inc.

