

# SALISBURY CENTER

SALISBURY, NC | NEQ FREELAND DRIVE & S. ARLINGTON STREET



MIXED USE | RETAIL | RESTAURANT

Retail Center with a mix of national and local retailers and restaurants shadow anchored by a Wal-Mart Supercenter.

## DEMOGRAPHICS:

	3 MILE	15 MILE	25 MILE
2018 Population	30,252	194,289	623,317
2018 Daytime Population	51,312	192,007	621,888
2018 Total Households	11,616	75,052	237,572
2018 Average HH Income	\$51,873	\$57,559	\$69,314
2018 Median HH Income	\$37,928	\$45,237	\$52,632

## TRAFFIC COUNTS:

Innes Street: 42,911 VPD

CENTER SIZE: 29,722 SF

AVAILABILITY: SEE PG. 3

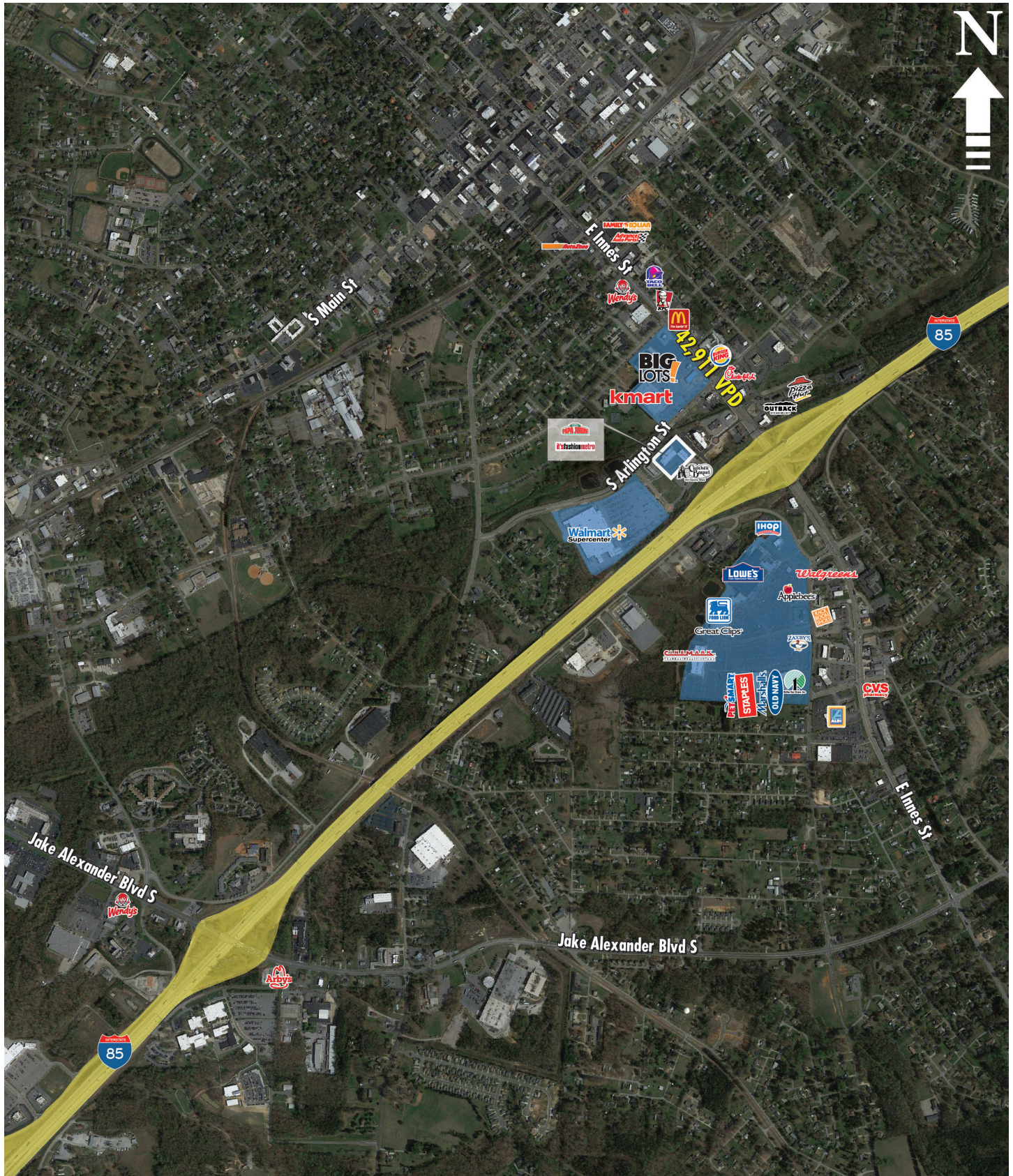
LEASE RATES: PLEASE CALL

## AREA RETAILERS:



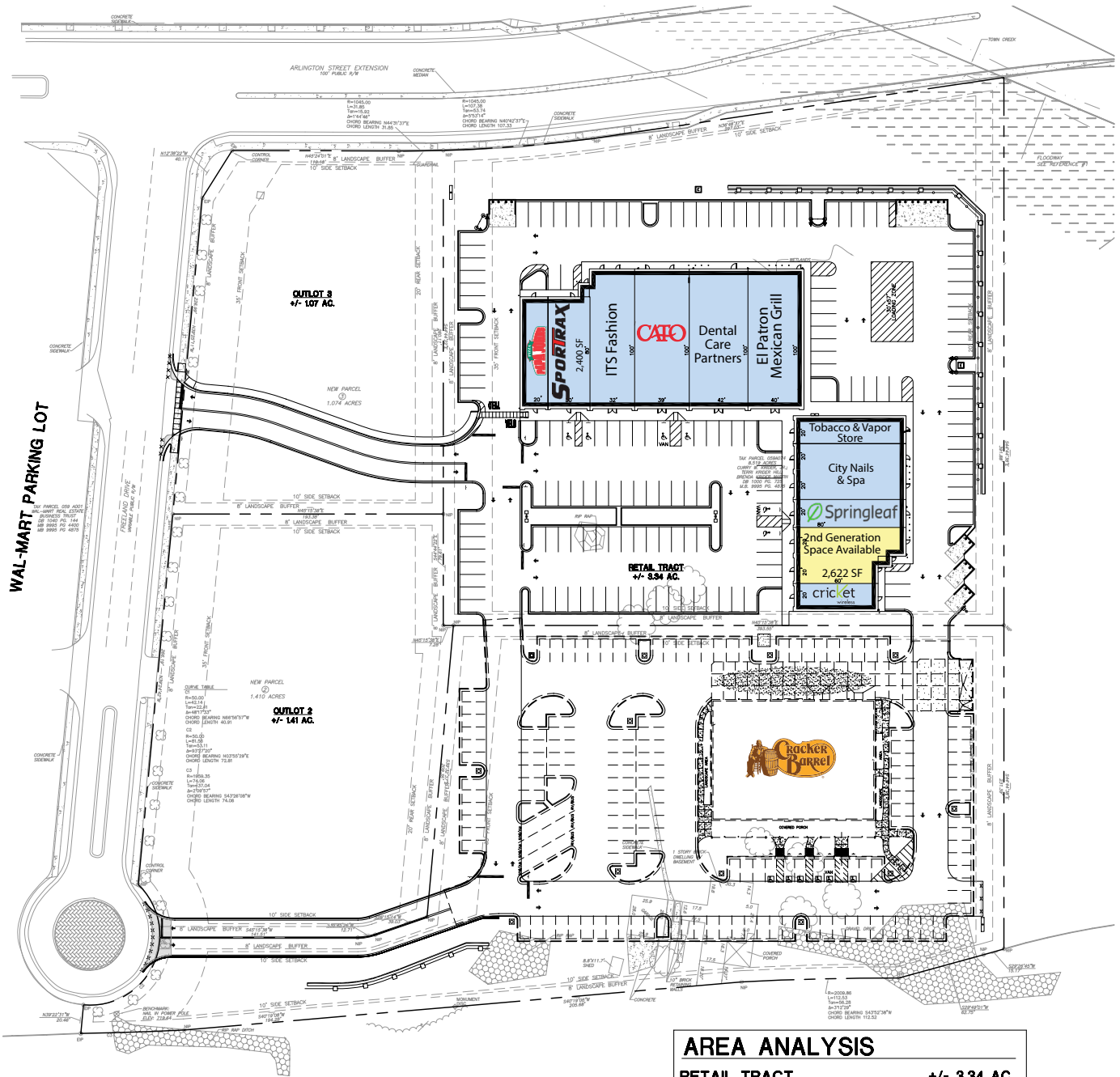
# SALISBURY CENTER

SALISBURY, NC | NEQ FREELAND DRIVE & S. ARLINGTON STREET



# SALISBURY CENTER

SALISBURY, NC | NEQ FREELAND DRIVE & S. ARLINGTON STREET



- Leased
- Working LOI
- Available

AREA ANALYSIS	
RETAIL TRACT	+/- 3.34 AC.
OUTLOT 1	+/- 2.70 AC.
OUTLOT 2	+/- 1.41 AC.
OUTLOT 3	+/- 1.07 AC.
<b>TOTAL</b>	<b>+/- 8.52 AC.</b>

SITE ANALYSIS	
RETAIL CENTER	29,700 S.F.
PARKING	158 SPACES
<b>RATIO</b>	<b>5.32 / 1000 S.F.</b>

