

# ALICE SHOPPING CENTER

ALICE, TX | 2611 EAST MAIN STREET



MIXED USE | RETAIL | RESTAURANT

**CENTER SIZE:** 15,964 SF  
**AVAILABILITY:** 100% LEASED  
**NNN:** \$4.09 PSF  
**RATES:** PLEASE CALL

Retail Center with a mix of national and local retailers and restaurants shadow anchored by a Wal-Mart Supercenter.

DEMOGRAPHICS:	3 MILE	15 MILE	25 MILE
2018 Population	16,086	40,490	105,909
2018 Daytime Population	23,084	41,598	107,317
2018 Total Households	5,592	13,646	35,774
2018 Average HH Income	\$70,432	\$65,821	\$65,682
2018 Median HH Income	\$47,434	\$45,113	\$46,300

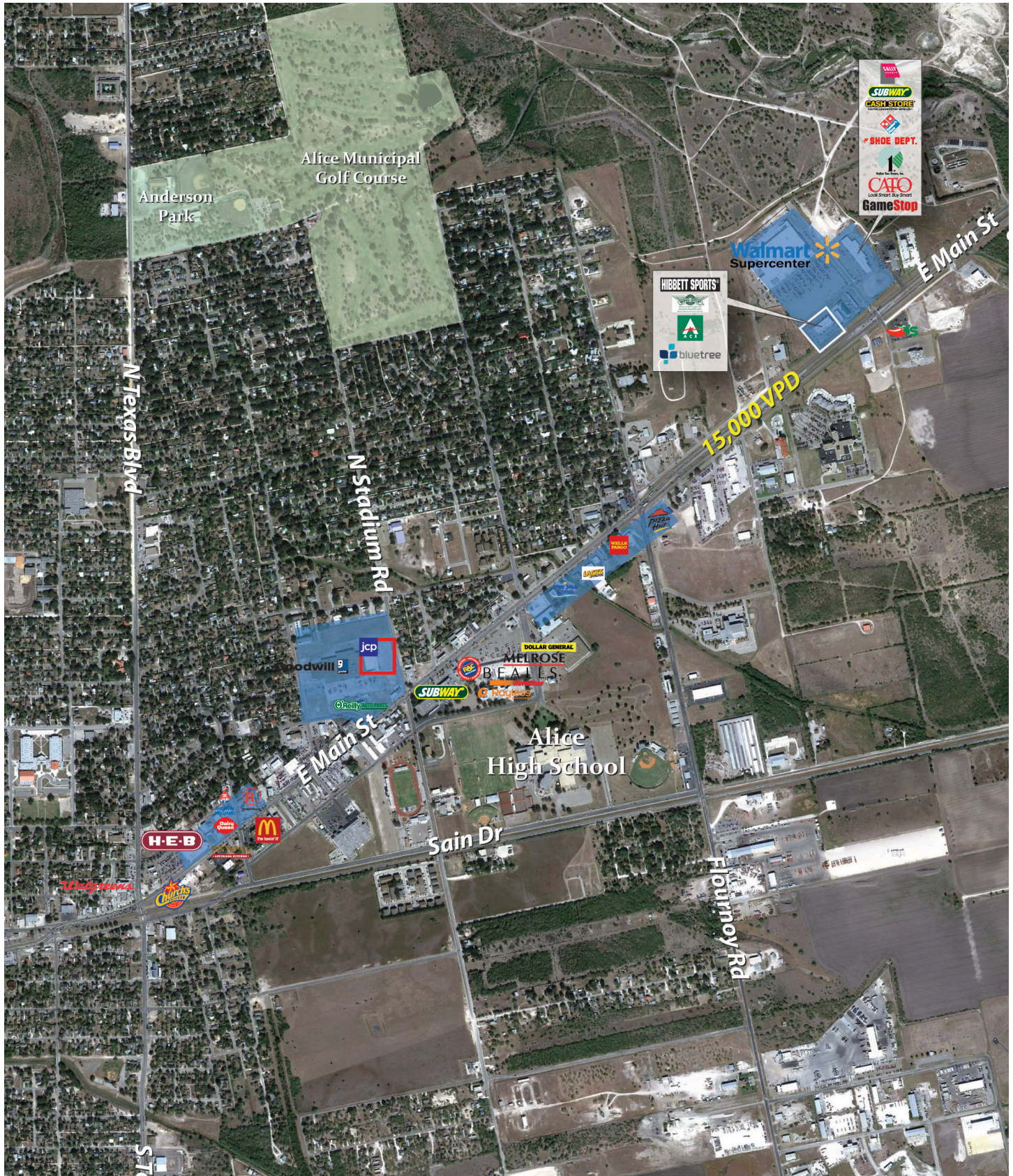
**AREA RETAILERS:**

**TRAFFIC COUNTS:**  
 E. Main Street: 15,000 VPD

© 2019 The Retail Connection, L.P. All Rights Reserved. All of the information contained herein has been obtained from sources deemed reliable; however, no representation or warranty is made to the accuracy thereof. Updated in 2019

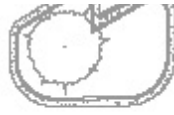
# ALICE SHOPPING CENTER

ALICE, TX | 2611 EAST MAIN STREET



# ALICE SHOPPING CENTER

ALICE, TX | 2611 EAST MAIN STREET



PROPOSED WAL-MART ACCESS EASEMENT

