



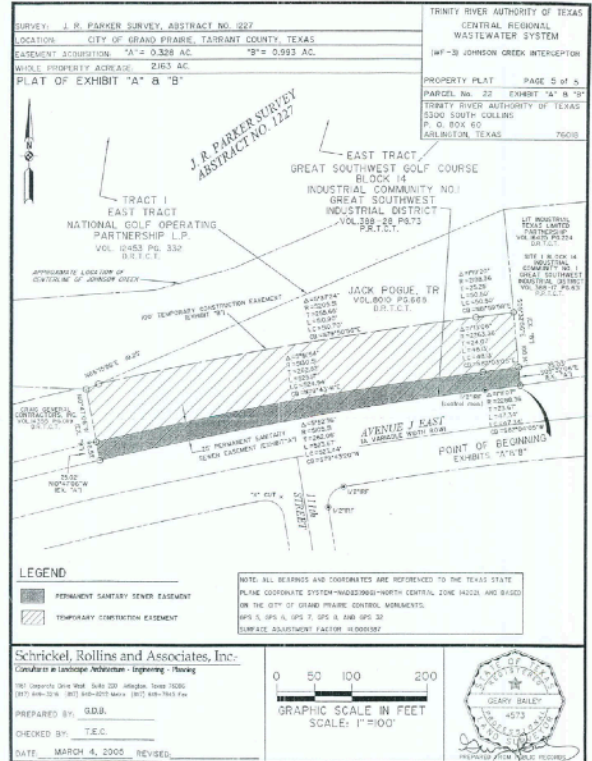
## 1101 E Avenue J

Grand Prairie, Texas 75050

### LAND AERIAL



### LAND SURVEY



## Building Highlights

- 2.16 +/- acres
- Zoned L-1, light industrial
- Owner user or investment
- Located in highly desired Upper GSW Industrial submarket

## Location Highlights

- Easy access to SH 360, Hwy 161 and Hwy 183
- 10 minutes to DFW International Airport

## Will Dillard

PRINCIPAL

520 Ave H E, Suite 105 Arlington, TX 76011  
 214.686.5359 / [wdillard@wellscre.com](mailto:wdillard@wellscre.com)

WELLSCRE.COM