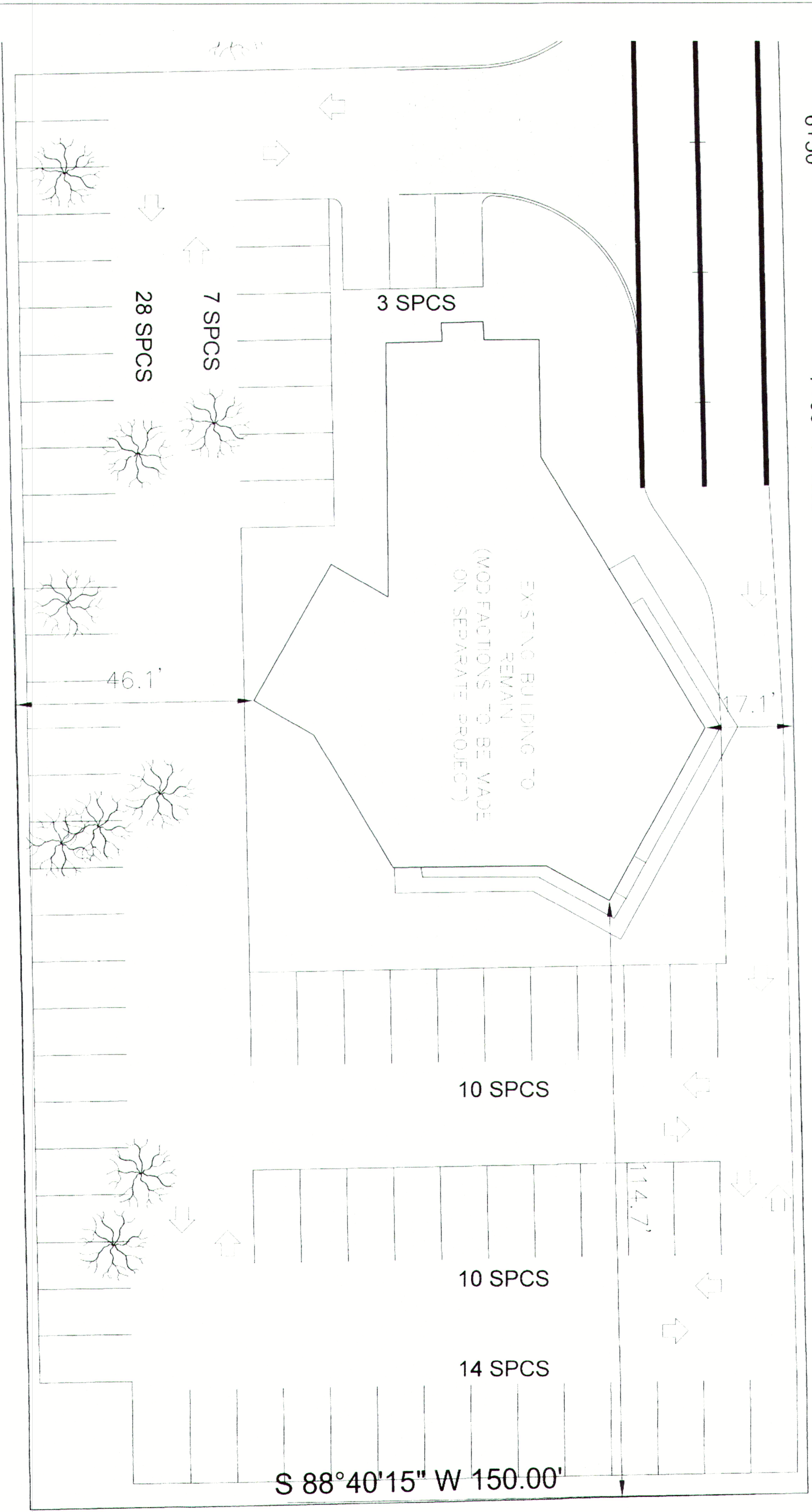


6+50

7+00 7+16.37



PARKING LOT PLAN

LEGEND

- EXISTING CONTOUR LINE
- NEW CONTOUR LINE
- FLOW DIRECTION
- NEW BUILDING
- PROPOSED 6" CONCRETE RELATIVE PAVEMENT
- PROPOSED 5" CONCRETE PARKING OF PAVEMENT
- PROPOSED 1/2 SPCS - 9x8 STA. 11.5.275

BENCH MARK AND LOCAL BENCH MARKS
GIC CONTROL TO SITE
TRANSFERRED TO SITE
TBM FOR AT NORTH EAST HORIZONTAL
CORNER, IRON ROD FOUND, 614 CAVAN
ROAD, DUNCANVILLE, TEXAS
ELEVATION 599.78
TBM TOP OF MANHOLE FOR 8" SEWER
MAIN STREET ON NORTH SIDE
AND DEFEAT STREET ELEVATION 598.40

DATE	DESCRIPTION	APPROVAL	REVISION
XCES			
614 CAVAN ROAD DUNCANVILLE, TEXAS 75015 (817) 790-1311			
785 BENDICIONES LLC 614 CAVAN ROAD DUNCANVILLE, TEXAS			
SCALE	DATE	SCALE	PROJECT NO.
1"=20'	11/2018	1"=20'	201819
XC			