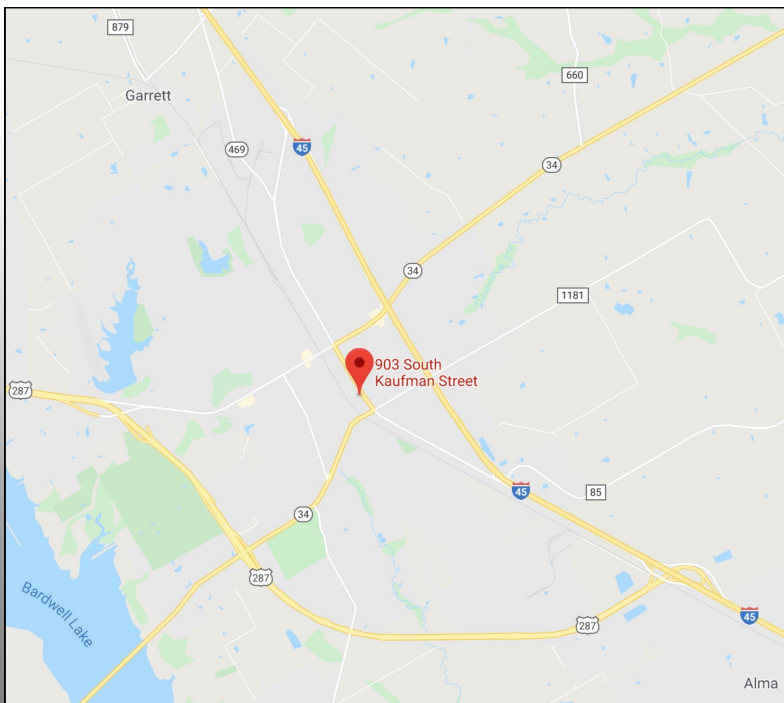
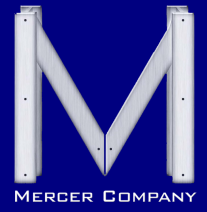


FOR SALE/LEASE: 40,650 SQUARE FEET  
903 S. KAUFMAN, ENNIS, TX 75119

INDUSTRIAL REAL ESTATE BROKERAGE

WWW.MERCER-COMPANY.COM



## DETAILS

### FOR SALE/LEASE

- ◆ TOTAL SF: 40,650
- ◆ LAND AREA: 2.14 AC.
- ◆ OFFICE SF: 1,500
- ◆ DOCK DOORS: 6
- ◆ GRADE LEVEL DOORS: 2
- ◆ CLEAR HEIGHT: 16'-20'
- ◆ SPRINKLERED
- ◆ HEAVY POWER
- ◆ PARKING: 45 SPACES

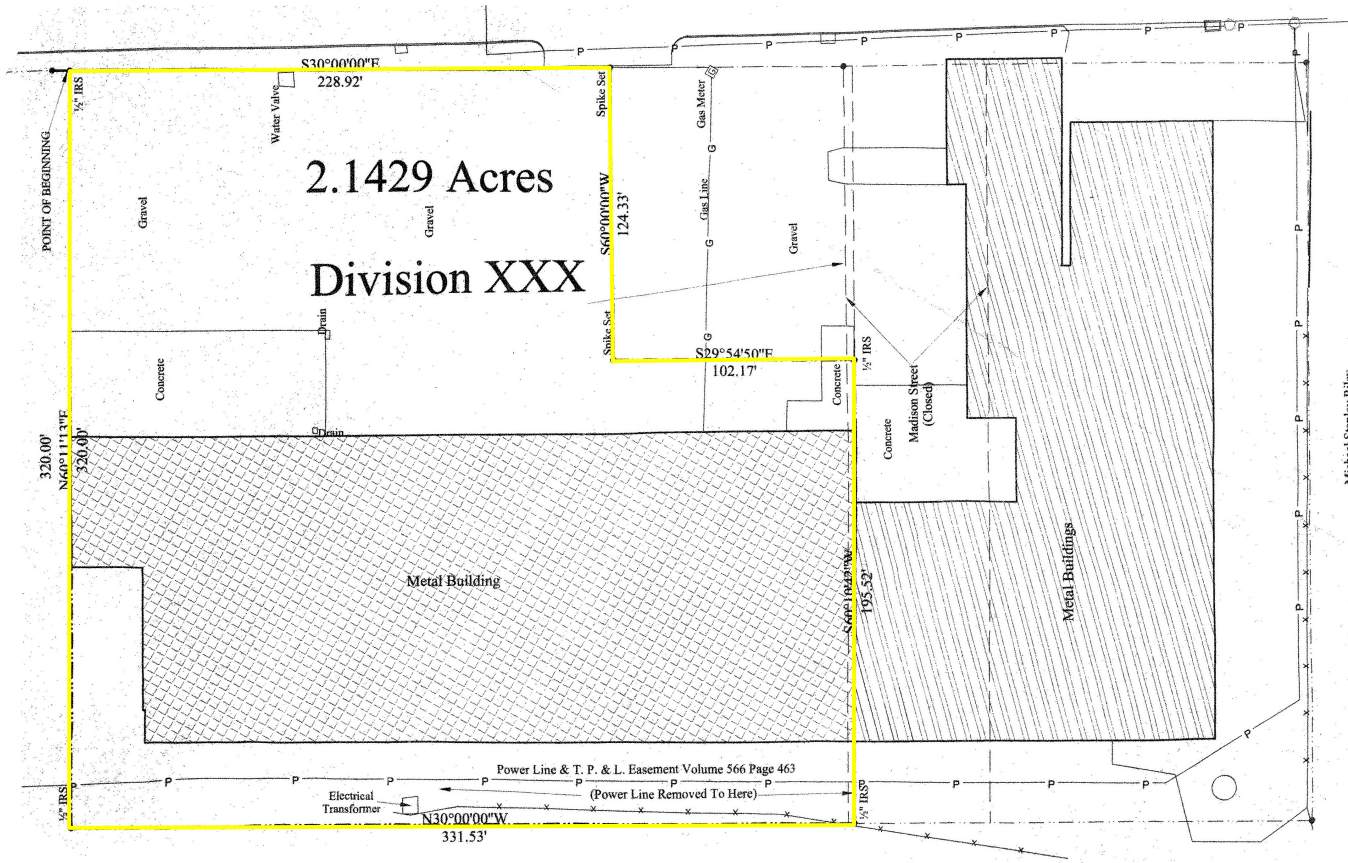
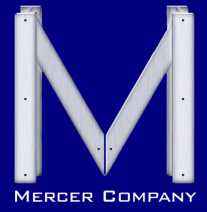
JEREMY MERCER  
CELL 214.682.3447  
JEREMY@MERCER-COMPANY.COM

EVAN WEBB  
CELL 972.310.3331  
EWEBB@MERCER-COMPANY.COM

# FOR SALE/LEASE: 40,650 SQUARE FEET 903 S. KAUFMAN, ENNIS, TX 75119

INDUSTRIAL REAL ESTATE BROKERAGE

WWW.MERCER-COMPANY.COM



Michael Stanley Riley  
Volume 711 Page 856



The information contained herein has been given to us by the owner of the property or other sources we deem reliable. We have no reason to doubt its accuracy, but we do not guarantee it. All information should be verified before purchase or lease.