

FOR LEASE: 93,079 SQUARE FEET
1170 109TH STREET, GRAND PRAIRIE, TX 75050

INDUSTRIAL REAL ESTATE BROKERAGE

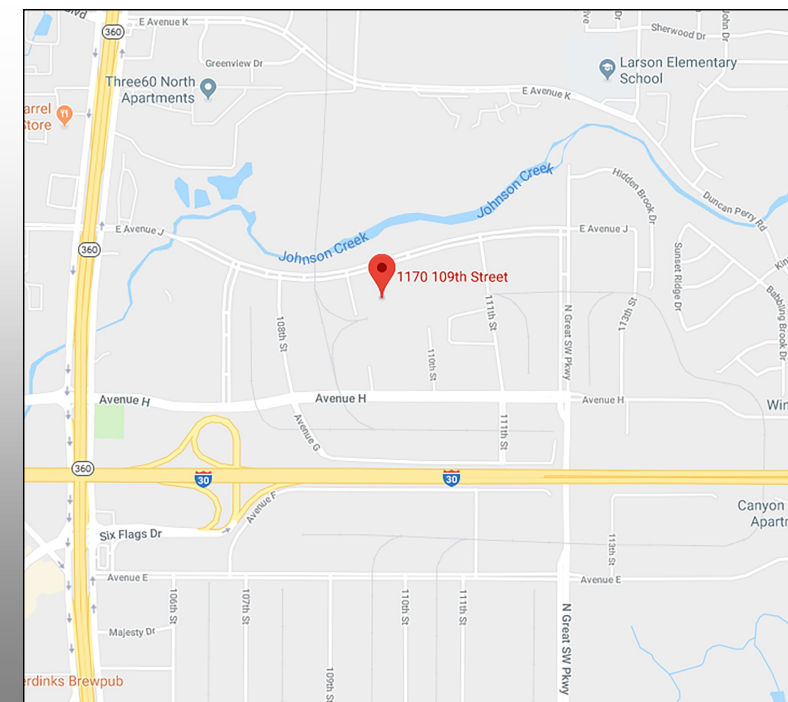
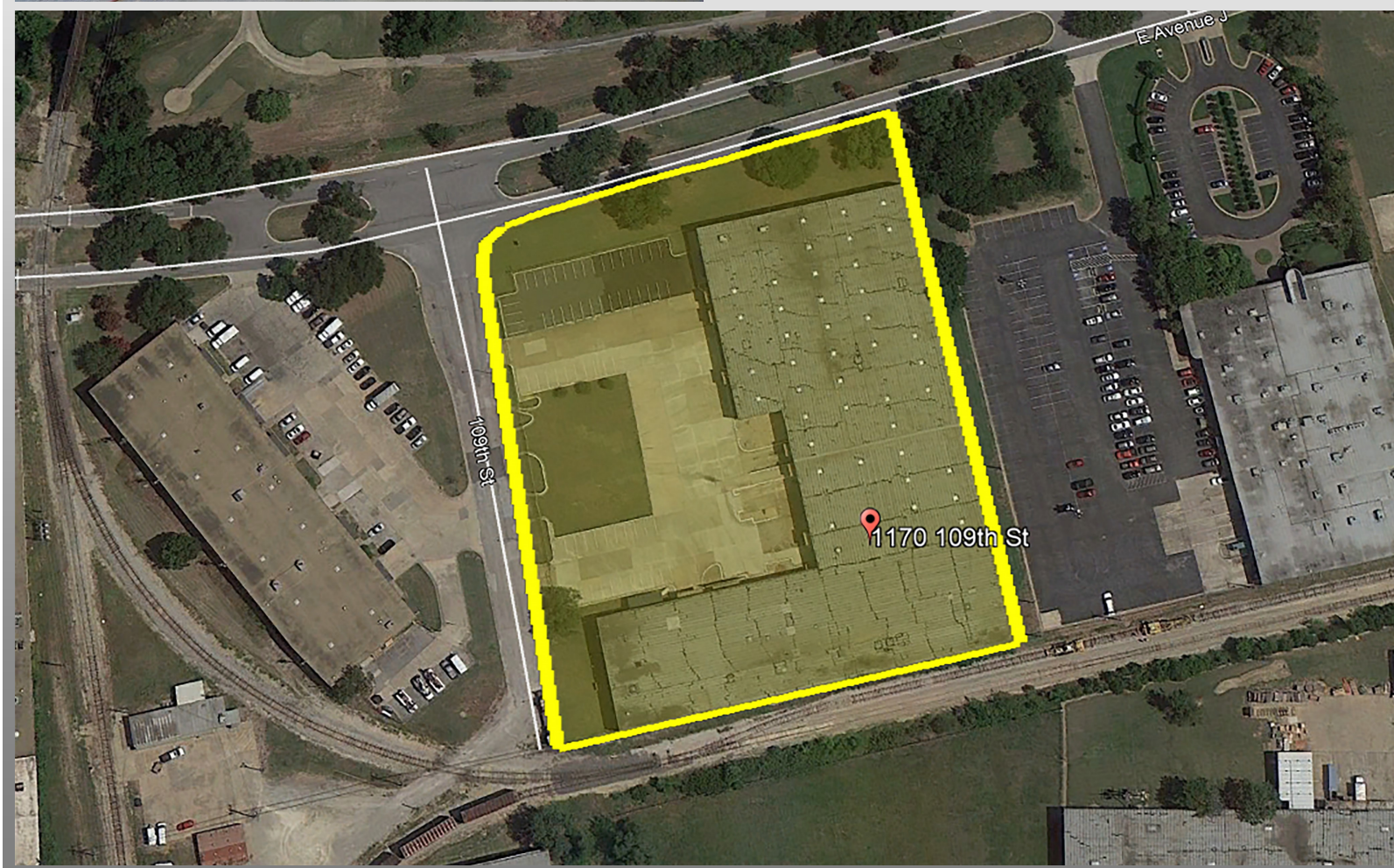
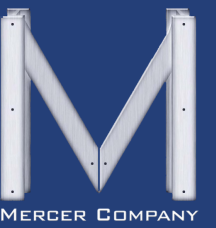
WWW.MERCER-COMPANY.COM



FOR LEASE: 93,079 SQUARE FEET
1170 109TH STREET, GRAND PRAIRIE, TX 75050

INDUSTRIAL REAL ESTATE BROKERAGE

WWW.MERCER-COMPANY.COM



DETAILS

AVAILABLE FOR SALE/ LEASE

- ◆ TOTAL SF: 93,079
- ◆ OFFICE SF: 9,979
- ◆ WORK ROOMS SF: 6,047
- ◆ LAND AREA: 4.25 ACRES
- ◆ CLEAR HEIGHT: 16'
- ◆ DOCK DOORS: 5
- ◆ GRADE LEVEL DOOR: 2-RAMPS (1-OVERSIZED)
- ◆ HEAVY POWER: 1,600A/240V/3-PHASE
- ◆ FENCED OUTSIDE STORAGE
- ◆ SPRINKLERED
- ◆ AMPLE PARKING
- ◆ DIVISIBLE TO 25,000 SF

CORBY HODGKISS

CELL 469.360.3918

CHODGKISS@MERCER-COMPANY.COM

CORBY HODGKISS

CELL 469.360.3918

CHODGKISS@MERCER-COMPANY.COM

