

**FOR SALE**

## COMMERCIAL LAND

S Colony Blvd and Paige Rd  
The Colony, Texas 75056

This property is located in The Colony, Texas. Set between two retail sites, this commercial land offers an excellent development opportunity! This property is minutes from the Sam Rayburn Tollway creating easy access to surrounding cities such as Lewisville, Carrollton, and Frisco.



### LAND

±1.66 Acres

### ZONING

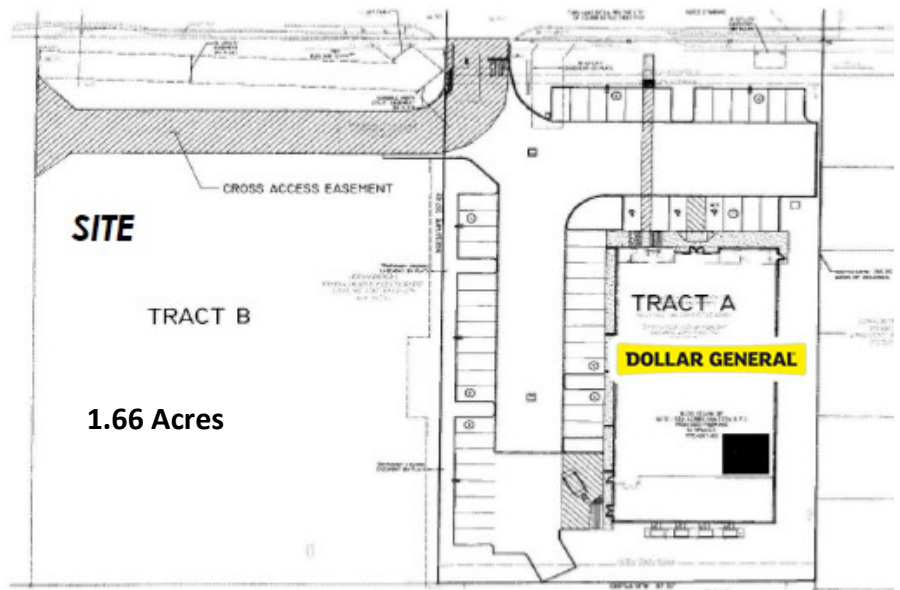
Commercial

### FEATURES

- Near Sam Rayburn Tollway
- Great Accessibility
- Excellent Commercial Land Site
- Adjacent to CVS

### SALE PRICE

Negotiable



### HENRY S. MILLER

5151 Belt Line Rd, Suite 900  
Dallas, Texas 75254

[www.henrysmiller.com](http://www.henrysmiller.com)

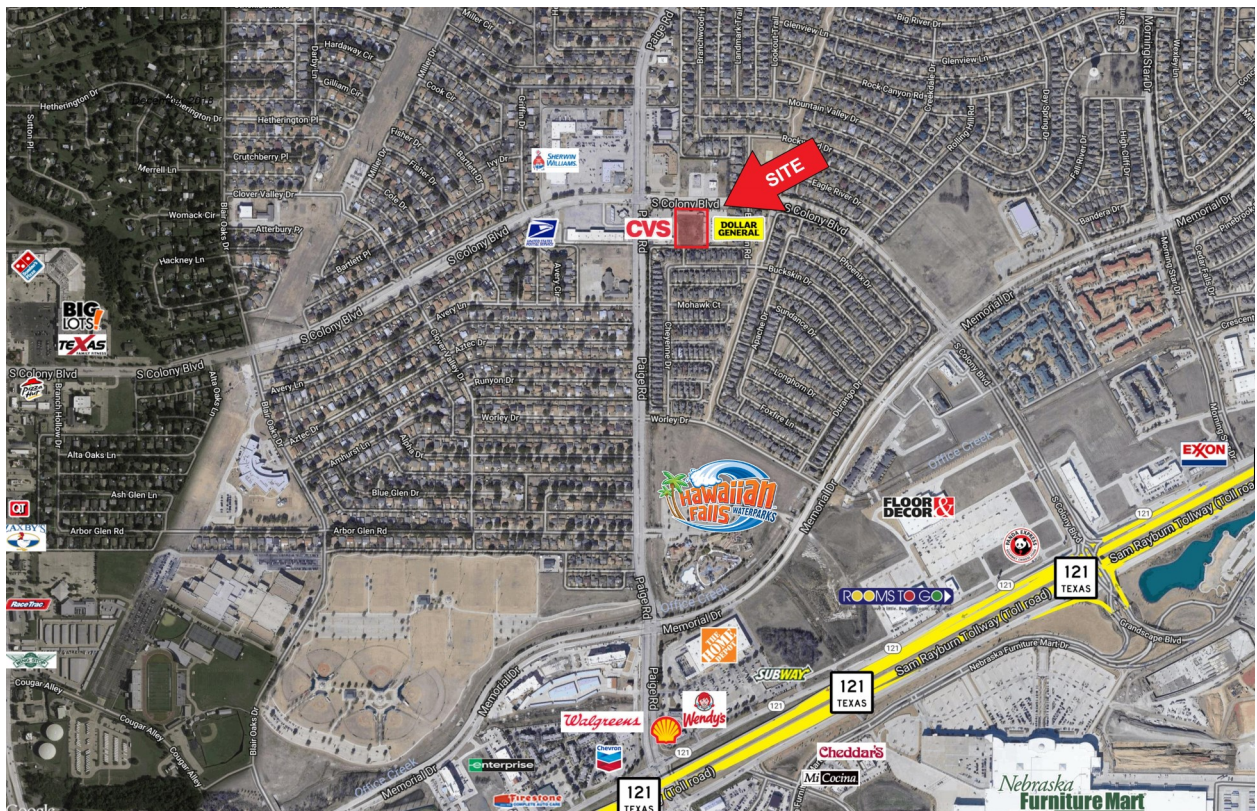
### DAN SPIKA, SIOR

Executive VP/Principal  
O 972-386-1478  
C 972-741-2541  
[dspika@henrysmiller.com](mailto:dspika@henrysmiller.com)



# COMMERCIAL LAND

S Colony Blvd and Paige Rd  
The Colony, Texas 75056



NOTICE & DISCLAIMER: The enclosed information is from sources believed to be reliable, but Henry S. Miller Brokerage, LLC has not verified the accuracy of the information. Henry S. Miller Brokerage, LLC makes no guarantee, warranty or representation as to the information, and assumes no responsibility for any error, omission or inaccuracy. The information is subject to the possibility of errors, omissions, changes of condition, including price or rental, or withdrawal without notice. Any projections, assumptions or estimates are for illustrative purposes only. Recipients should conduct their own investigation.