

4650 Whitesburg Drive - HUNTSVILLE, AL

MEDICAL/OFFICE SPACE FOR LEASE



PROPERTY HIGHLIGHTS

- Building is easily accessed via a lighted intersection on Whitesburg Drive and Teakwood Drive SW.
- Located in close proximity to Crestwood Medical Center.
- Site offers abundant parking and excellent street visibility from highly trafficked Whitesburg Drive.
- Interior space can be modified to fit tenant needs.

AVAILABLE SUITES

Suite 103 925 SF (Available 9/30/2020)

Suite 201* 2,540 SF

Suite 202* 1,926 SF

*Suites can be combined to create a 4,466 SF space.

ABOUT THE PROPERTY

4650 Whitesburg is home to Synovus Bank and currently has two spaces available on the second floor. Located on Whitesburg Drive, just north of Airport Road, the property is situated in close proximity to abundant shopping and dining options.

LOCATION

4650 Whitesburg Drive
Huntsville, AL 35801
34.697280, -86.569001

SPACE AVAILABLE

5,391 SF of office space

PRICE

Call for pricing.

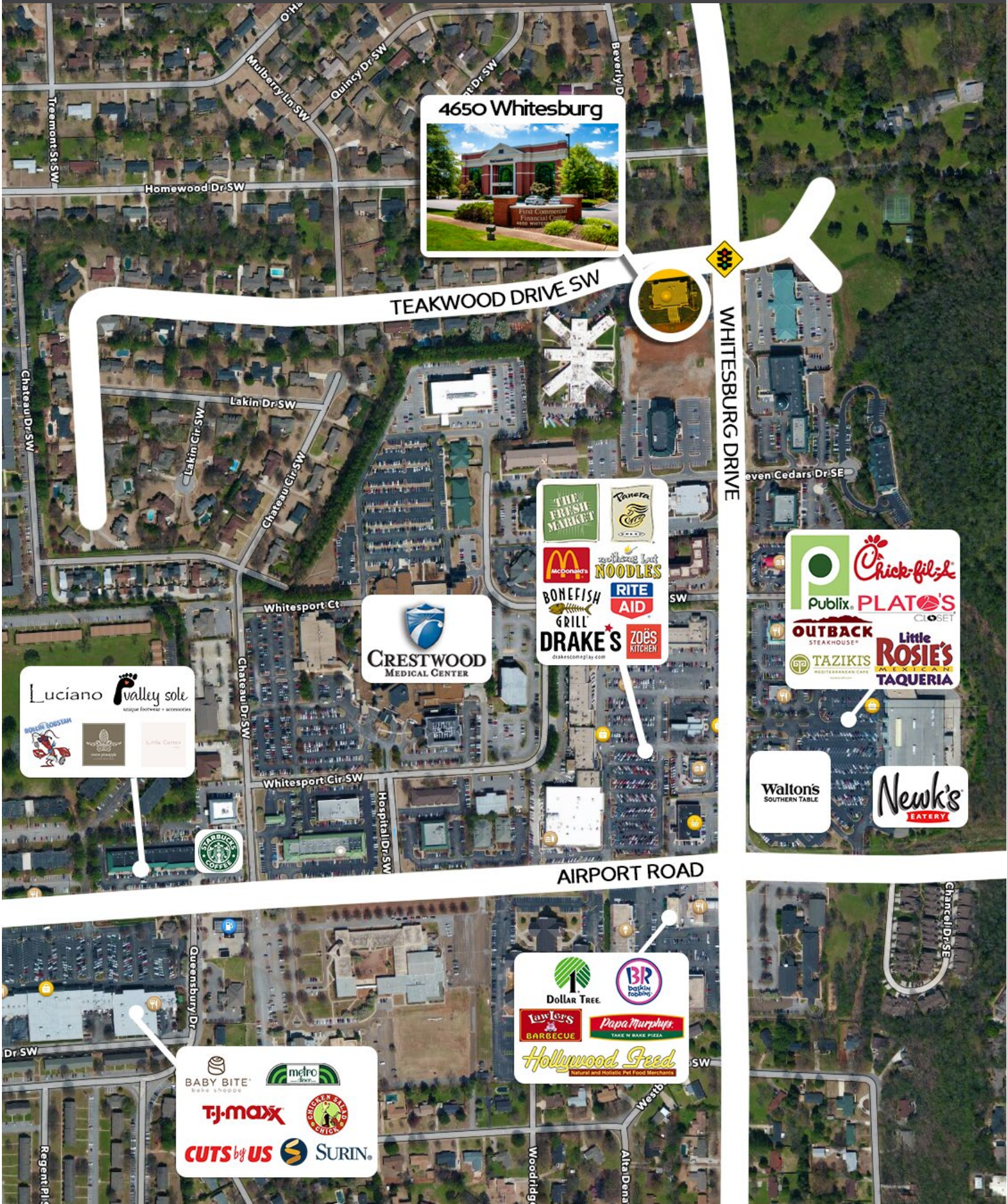
FOR MORE INFORMATION CALL

Eric St. John, CCIM
256-536-8809

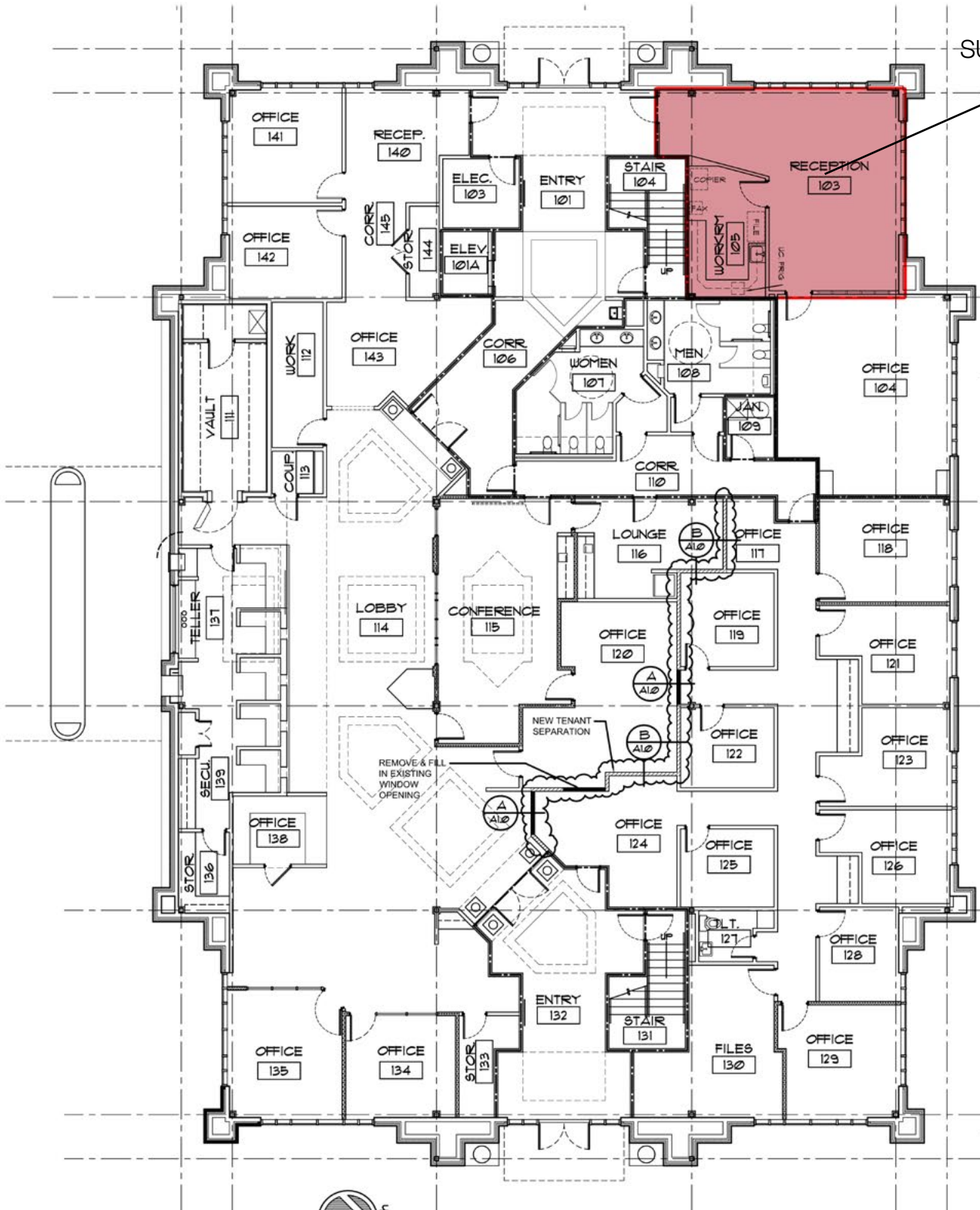


CRUNKLETON
COMMERCIAL REAL ESTATE GROUP

PROPERTY LOCATION

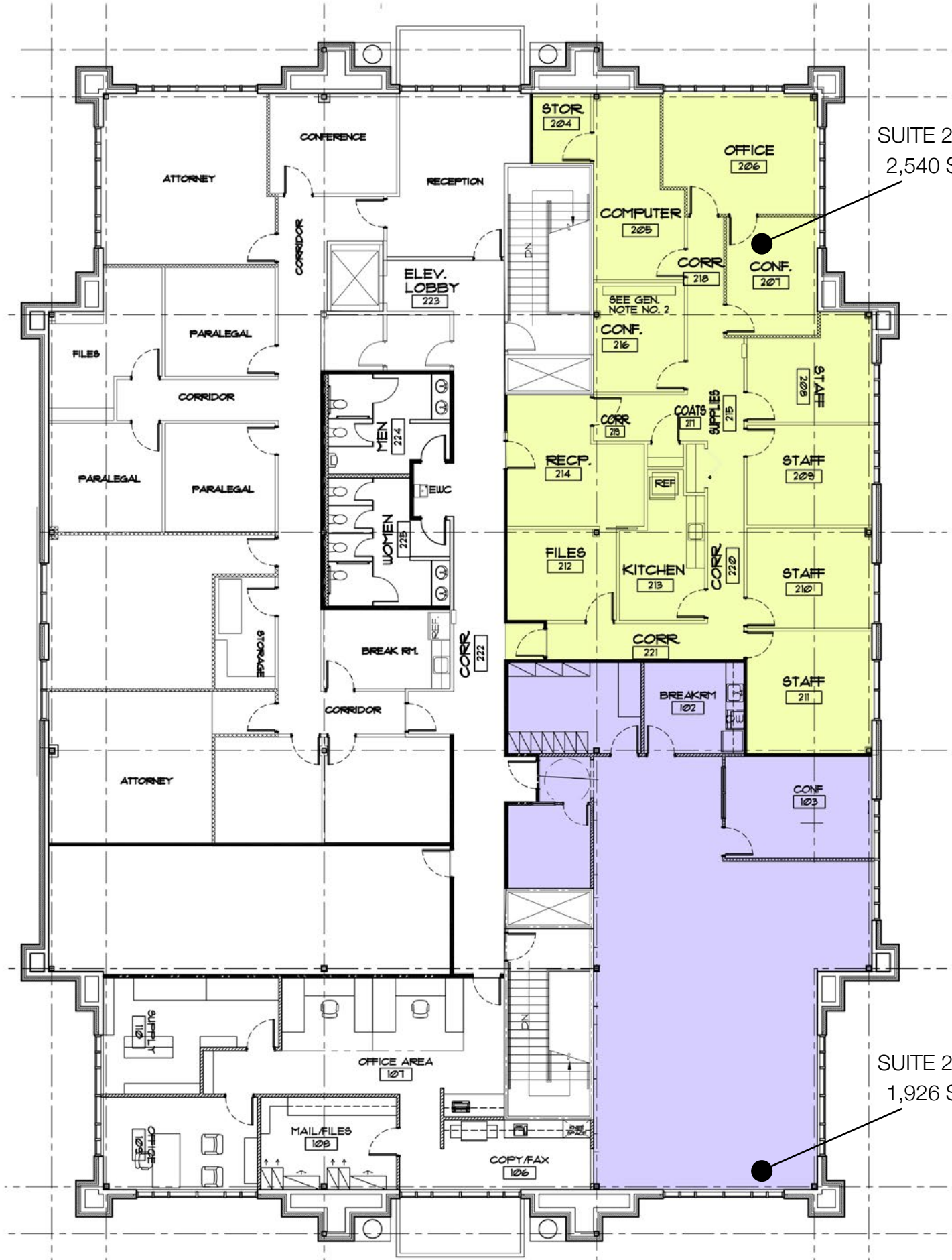


SUITE 103
925 SF



FIRST FLOOR PLAN

SCALE: 1/8" = 1'-0"



SUITE 201
2,540 SF

SUITE 202
1,926 SF



SECOND FLOOR PLAN

SCALE: 1/8" = 1'-0"

THE PHOTOS REPRESENT THE SECOND-FLOOR SUITES.

