

AVAILABLE \$250,000

HEART OF THE METROPLEX

±21.46 ACRES FLOOD PLAIN/FLOOD WAY

3201 Greenbelt Road, Fort Worth, TX 76040

HENRY S. MILLER

5151 Belt Line Rd, Suite 900
Dallas, Texas 75254

www.henrysmiller.com

NANCY HALLIDAY, VP

Office/Industrial Division

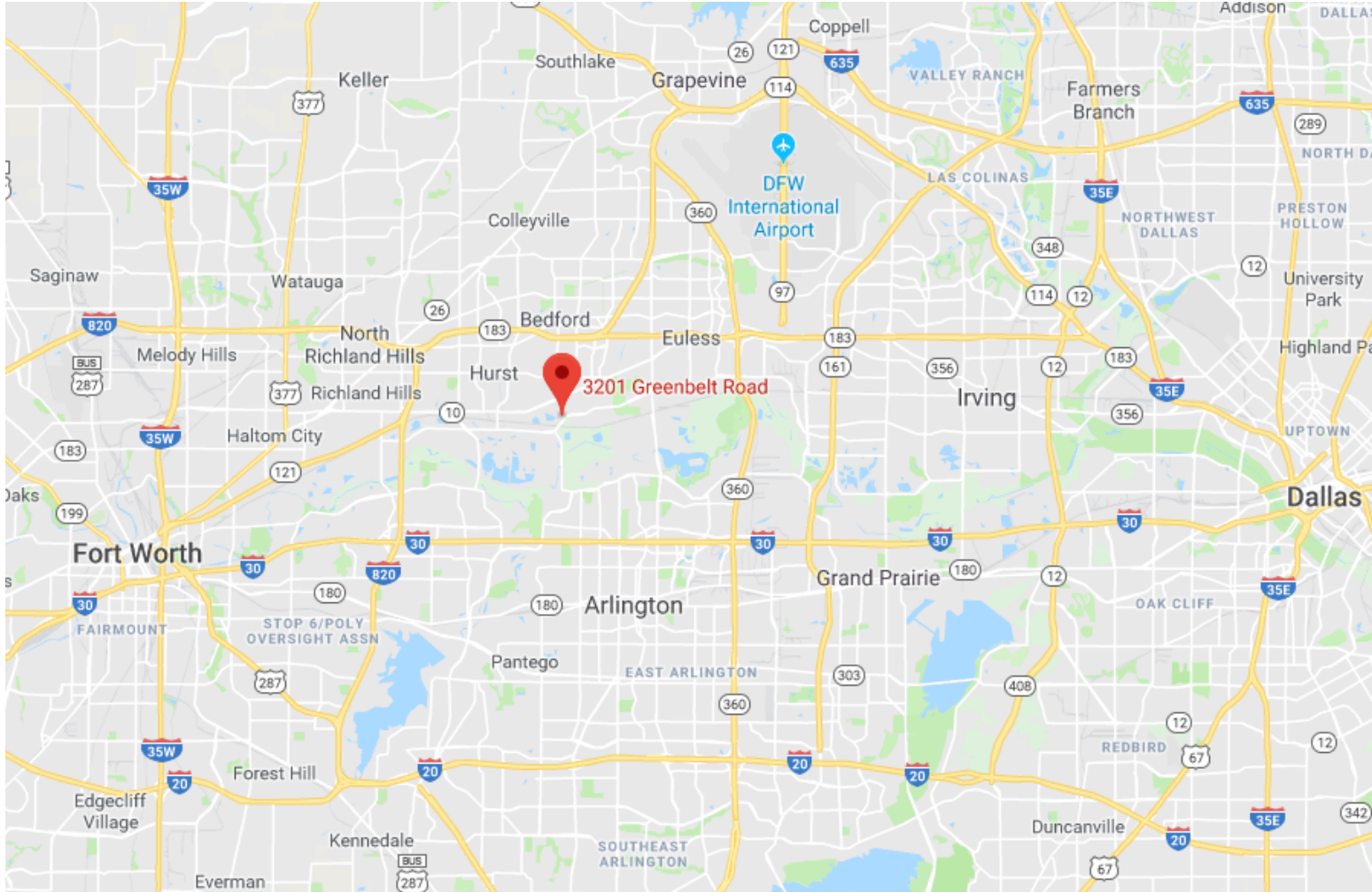
nancy@nancyhalliday.com

p 972.419.4000

m 214.850.0730



±21.46 ACRES AVAILABLE 3201 GREENBELT ROAD, FORT WORTH, TX



LOCATION

Intersection of Greenbelt and
Trinity Boulevard.
West of Raider Road

SIZE

± 21.25 Acres

DESCRIPTION

Unplatted
Juan Armendaris Survey
Abstract 57, Tracts 1 & 1A
Tarrant County

PRICE

\$250,000

CONTACT

NANCY HALLIDAY, VP

Office/Industrial Division
nancy@nancyhalliday.com

p 972.419.4000

m 214.850.0730

HENRY S. MILLER

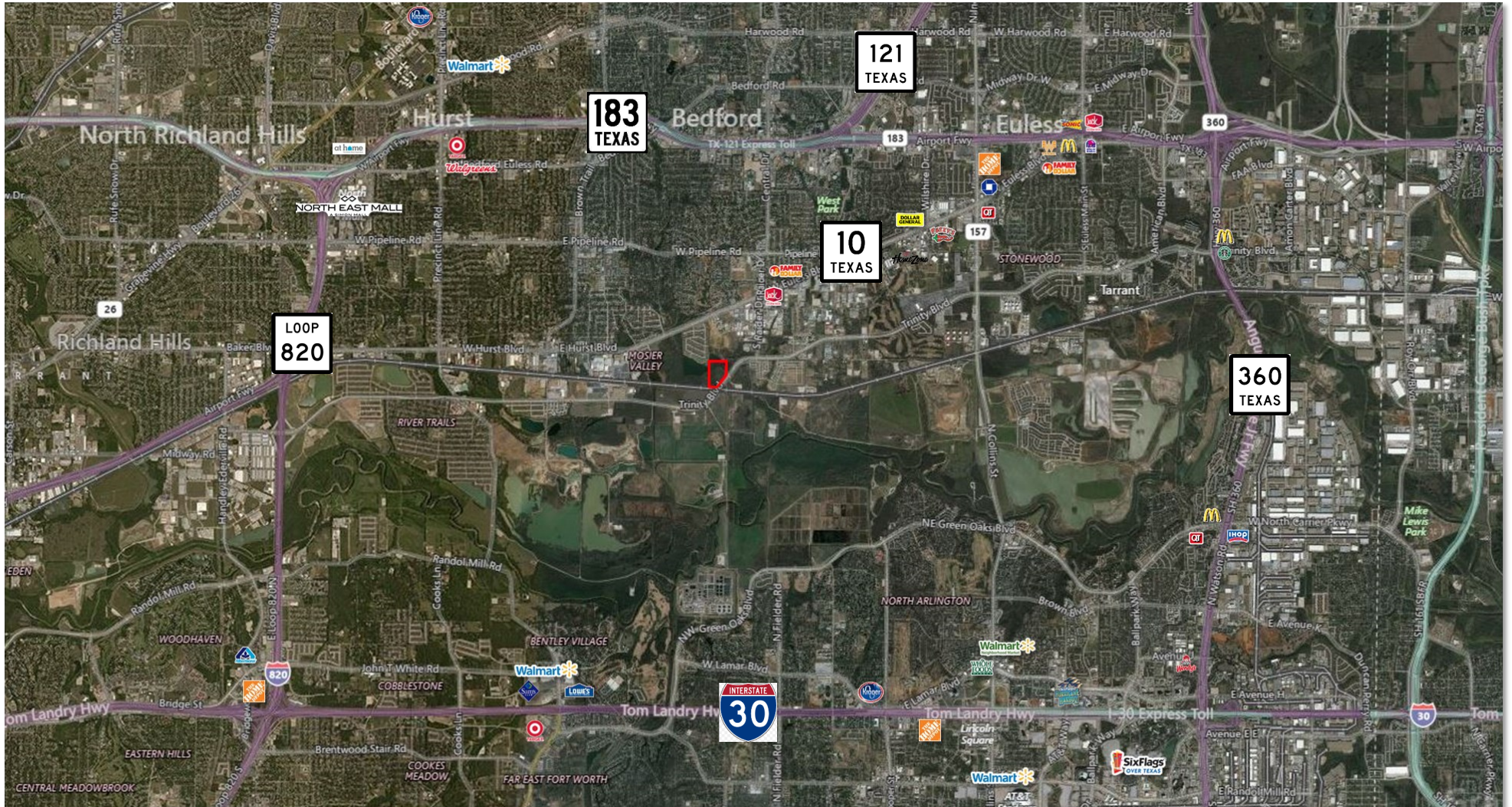
5151 Belt Line Rd, Suite 900
Dallas, Texas 75254

www.henrysmiller.com

The above information is from sources believed to be reliable, but Henry S. Miller Brokerage, LLC has not verified the accuracy of the information. Henry S. Miller Brokerage, LLC makes no guarantee, warranty or representation as to the information, and assumes no responsibility for any error, omission or inaccuracy. The information is subject to the possibility of errors, omissions, changes of condition, including price or rental, or withdrawal without notice. Any projections, assumptions or estimates are for illustrative purposes only. Recipients should conduct their own investigation.



AERIAL - ±21.46 ACRES FOR SALE 3201 GREENBELT ROAD, FORT WORTH, TX



HENRY S. MILLER

5151 Belt Line Rd, Suite 900
Dallas, Texas 75254

www.henrysmiller.com

The above information is from sources believed to be reliable, but Henry S. Miller Brokerage, LLC has not verified the accuracy of the information. Henry S. Miller Brokerage, LLC makes no guarantee, warranty or representation as to the information, and assumes no responsibility for any error, omission or inaccuracy. The information is subject to the possibility of errors, omissions, changes of condition, including price or rental, or withdrawal without notice. Any projections, assumptions or estimates are for illustrative purposes only. Recipients should conduct their own investigation.

