

RETAIL SPACE AVAILABLE

2815 & 2819 Commerce St., Dallas, TX 75226



FOR LEASE

CONTACT:

MICHAEL GRESBACK

Associate

Retail Division

e: mgresback@henrysmiller.com

p: 972.419.4080

c: 214.808.2893

PRESENTED BY:

HENRY S. MILLER BROKERAGE, LLC

5151 Beltline Rd.

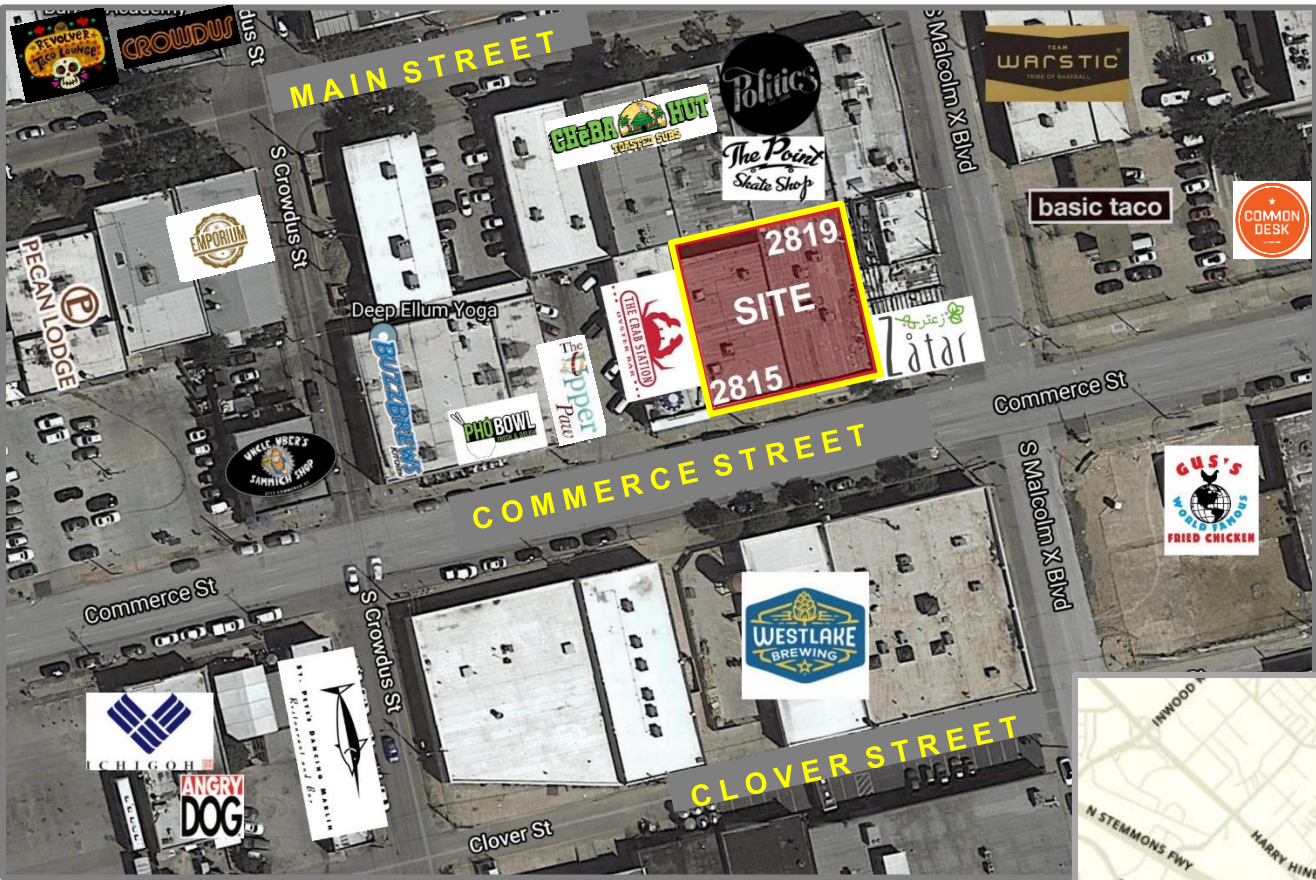
Suite 900

Dallas, Texas 75254

www.henrysmiller.com



SITE & DEMOGRAPHICS



LOCATION
2815-2819 Commerce Street
Dallas, Texas 75226

BUILDING SIZE
2815 Commerce St.: ±4,500 SF
2819 Commerce St.: ±5,000 SF

ZONING
Planned development

PRICE
Please contact broker

DEMOGRAPHICS	1 Mile	3 Mile	5 Mile
2019 Population	23,184	178,309	379,118
Avg. HH Income	87,189	92,666	93,397
Growth 2019-2024	12.62%	7.89%	6.98%

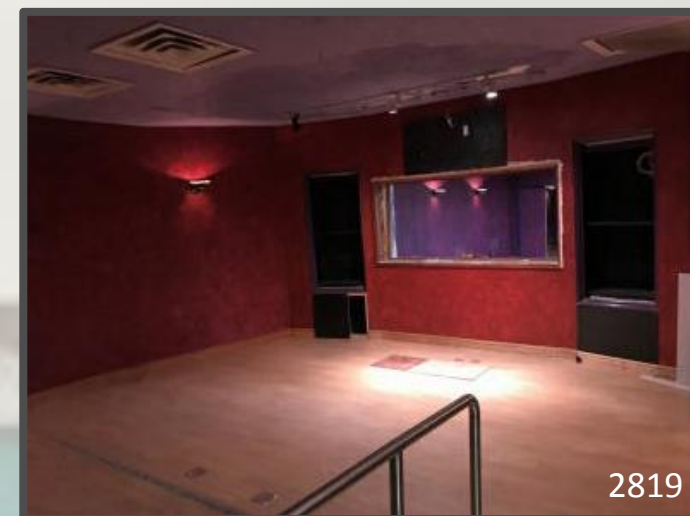


NOTICE & DISCLAIMER: The enclosed information is from sources believed to be reliable, but Henry S. Miller Brokerage, LLC has not verified the accuracy of the information. Henry S. Miller Brokerage, LLC makes no guarantee, warranty or representation as to the information, and assumes no responsibility for any error, omission or inaccuracy. The information is subject to the possibility of errors, omissions, changes of condition, including price or rental, or withdrawal without notice. Any projections, assumptions or estimates are for illustrative purposes only. Recipients should conduct their own investigation.

PHOTOS

2815 Commerce Street

- Great Food & Beverage space
- Open shell, ready for finish-out
- 4,500 SF + 500 SF back patio



2819 Commerce Street

- Live/Work Space
- With a recording studio
- 5,000 SF

Robot Family Mural on Hickory St.
Artist unknown



DEEP ELLUM HIGHLIGHTS

A pulsating and energetic entertainment district minutes from downtown Dallas.

A thriving microcosm of vibrant street art and creative culture with a colorful history.

- Eateries
- Breweries
- Cocktail bars
- Music production studios
- Concert venues
- Diverse retail shops
- Theatre
- Eclectic art galleries
- Residential lofts
- Big business developments
- Mural projects
- Nightlife

All in a hip location where creative vibes are welcome.



NEARBY RETAILERS

