

210 S. CARANCAHUA STREET | CORPUS CHRISTI, TX 78401



**PROPERTY DESCRIPTION**

This elegant downtown office building overlooks the Corpus Christi Bayfront with remarkable views and is located just uptown. The six story office building consists of 52,294 RSF and provides outstanding ingress & egress to the city's major thoroughfares.

**PROPERTY HIGHLIGHTS**

- Excellent Parking Arrangements
- Daily Full Service Janitorial Services
- Bus Line
- Accessible 24 Hours / 7 Days Per Week

**OFFERING SUMMARY**

Lease Rate:	\$15.50 SF/yr (Full Service)
Available SF:	3,294 SF
Building Size:	52,294 SF

DEMOGRAPHICS	1 MILE	3 MILES	5 MILES
Total Households	2,374	21,760	45,170
Total Population	6,291	59,356	124,816
Average HH Income	\$35,966	\$43,189	\$46,104

LAURA SCHABERG  
laura@joadame.com  
O: 361.880.5888  
C: 361.834.5111

FOR LEASE BORDEN INSURANCE

ADAME  
COMMERCIAL  
REAL ESTATE SOLUTIONS

210 S. CARANCAHUA STREET | CORPUS CHRISTI, TX 78401



LAURA SCHABERG  
laura@joeadame.com  
O: 361.880.5888  
C: 361.834.5111

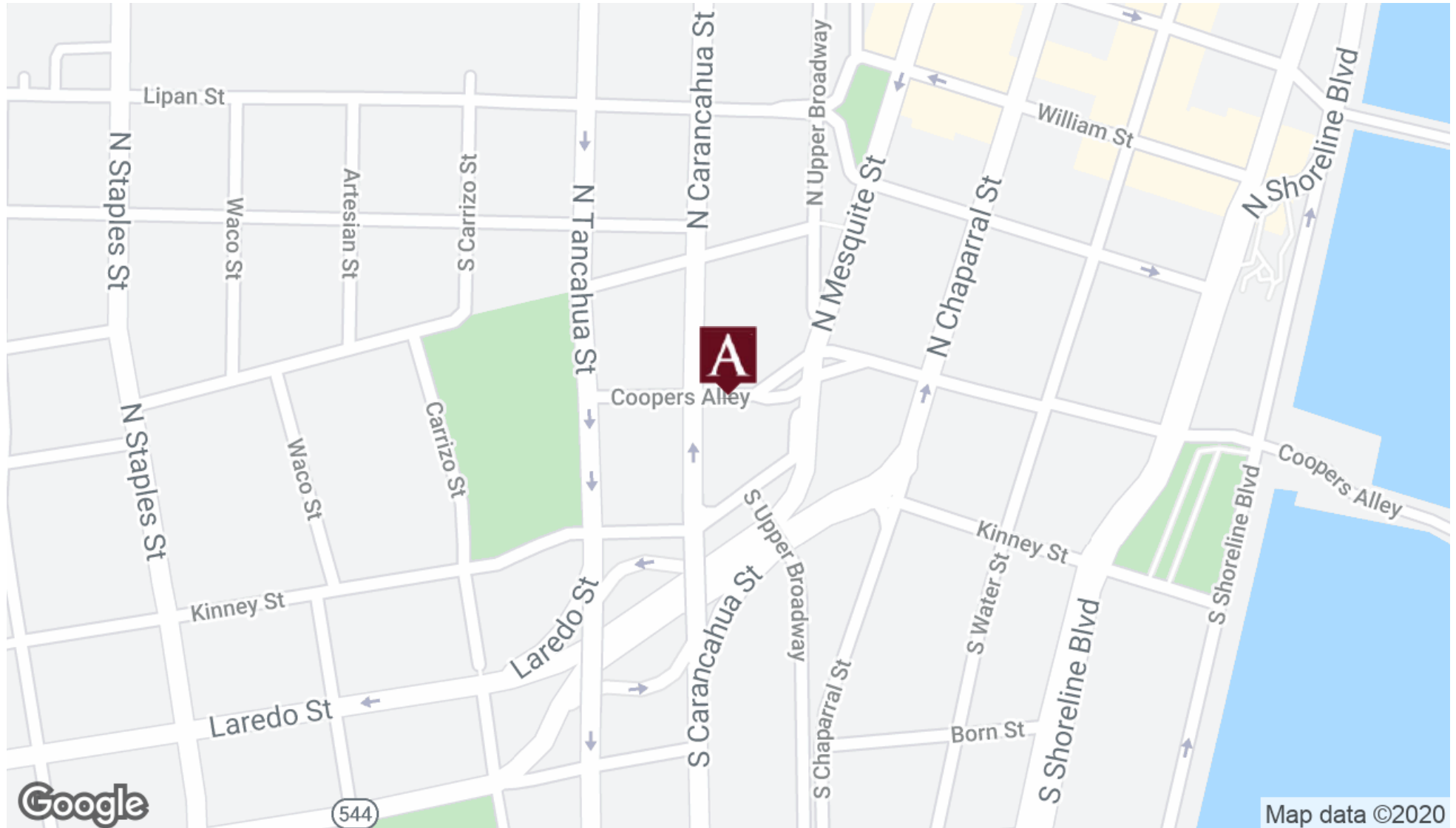
JOEADAME.COM

The information contained herein has been obtained from sources we deem reliable. We have no reason to doubt its accuracy, but we do not guarantee it.

FOR LEASE BORDEN INSURANCE

ADAME  
COMMERCIAL  
REAL ESTATE SOLUTIONS

210 S. CARANCAHUA STREET | CORPUS CHRISTI, TX 78401



LAURA SCHABERG  
laura@joeadame.com  
O: 361.880.5888  
C: 361.834.5111

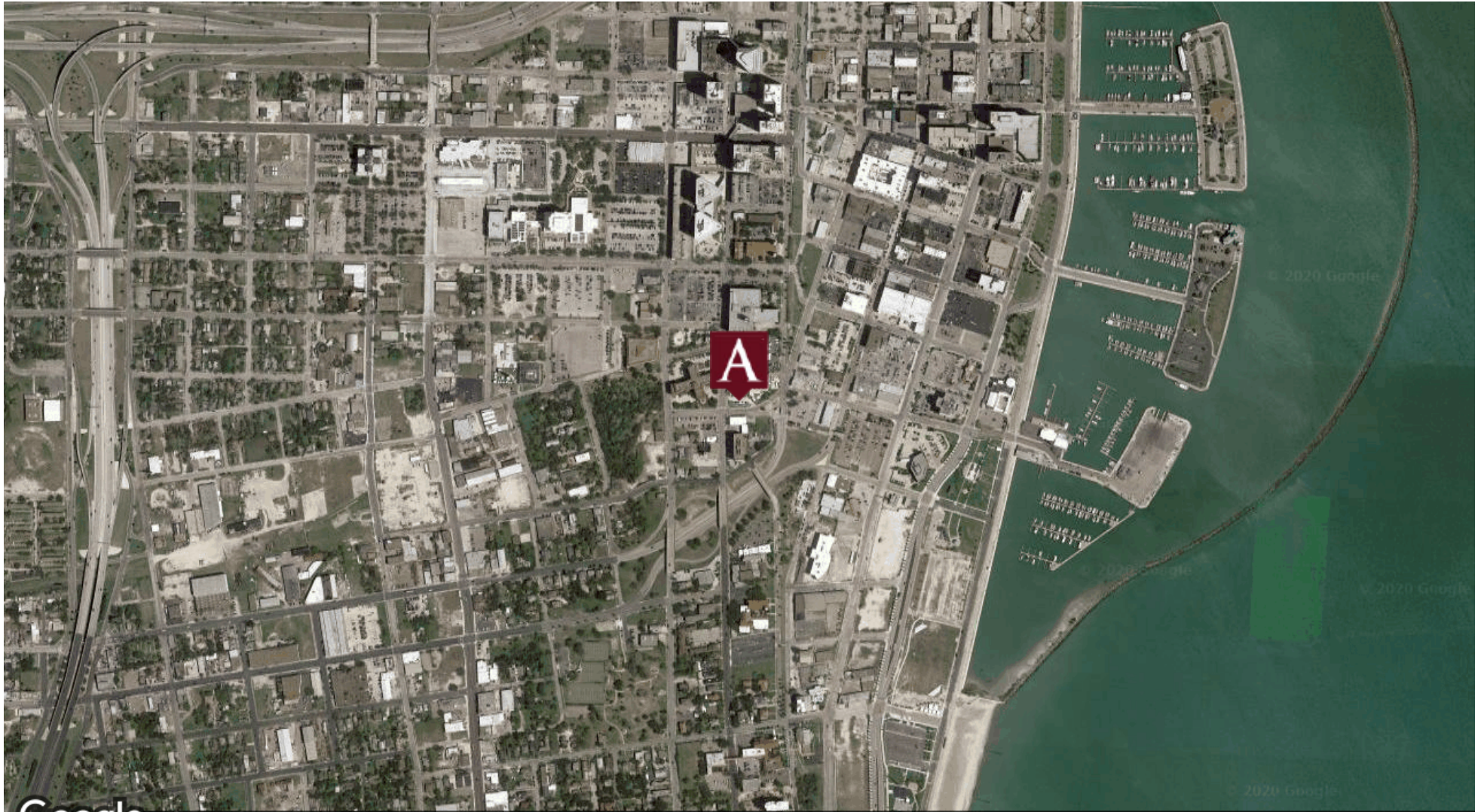
JOEADAME.COM

The information contained herein has been obtained from sources we deem reliable. We have no reason to doubt its accuracy, but we do not guarantee it.

FOR LEASE BORDEN INSURANCE

ADAME  
COMMERCIAL  
REAL ESTATE SOLUTIONS

210 S. CARANCAHUA STREET | CORPUS CHRISTI, TX 78401



Google Imagery ©2020 , Maxar Technologies, Texas General Land Office, U.S. Geological Survey, USDA Farm Service Agency

LAURA SCHABERG  
laura@joeadame.com  
O: 361.880.5888  
C: 361.834.5111

JOEADAME.COM

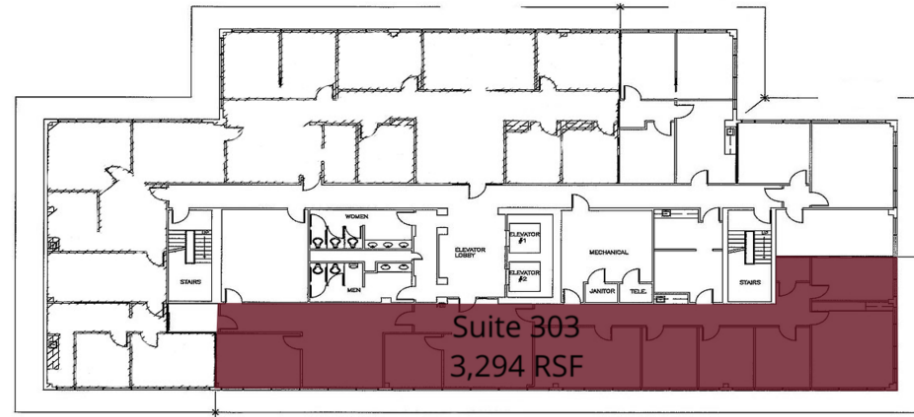
The information contained herein has been obtained from sources we deem reliable. We have no reason to doubt its accuracy, but we do not guarantee it.

# FOR LEASE BORDEN INSURANCE

**ADAME**  
COMMERCIAL  
REAL ESTATE SOLUTIONS

210 S. CARANCAHUA STREET | CORPUS CHRISTI, TX 78401

LEASE TYPE | Full Service  
TOTAL SPACE | 3,294 SF  
LEASE TERM | Negotiable  
LEASE RATE | \$15.50 SF/yr



210 CARANCAHUA — 3RD FLOOR  
Lease Plan  
CORPUS CHRISTI, TEXAS

1-21-16 NORTH NOT TO SCALE

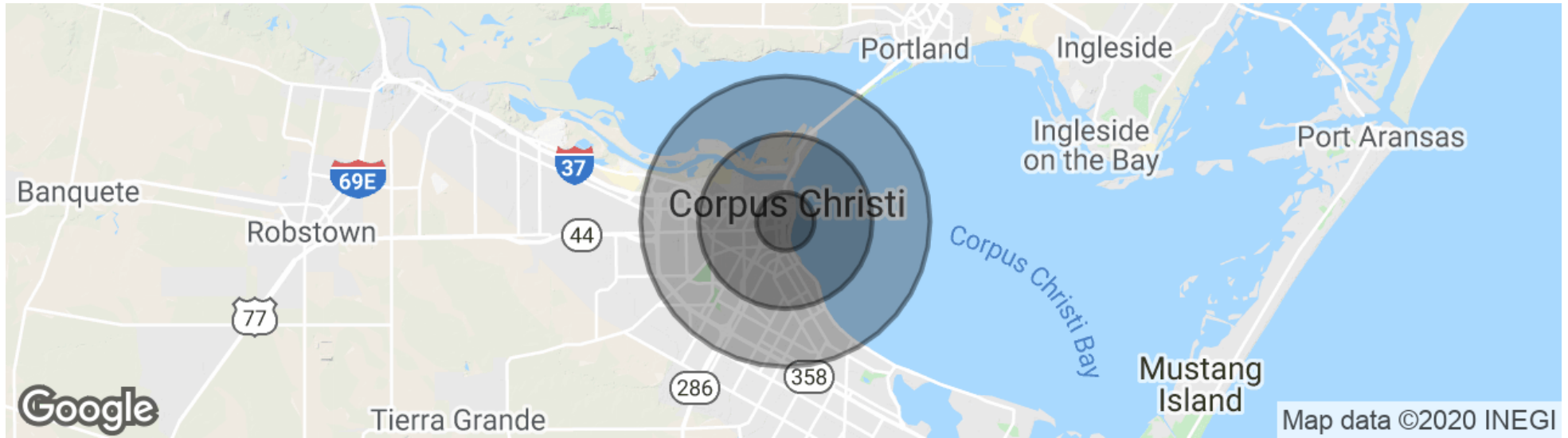
**idg** Dunnam Design Group, Inc.  
Interior Design & Space Planning  
361-884-2795  
MD@DUNNAMDESIGNGROUP.COM

SUITE	TENANT	SIZE (SF)	LEASE TYPE	LEASE RATE
Suite 303	Available	3,294 SF	Full Service	\$15.50 SF/yr

LAURA SCHABERG  
laura@joeadame.com  
O: 361.880.5888  
C: 361.834.5111

JOEADAME.COM

210 S. CARANCAHUA STREET | CORPUS CHRISTI, TX 78401



POPULATION	1 MILE	3 MILES	5 MILES
Total population	6,291	59,356	124,816
Median age	40.2	37.0	36.2
Median age (Male)	38.0	35.6	34.7
Median age (Female)	42.1	37.6	37.5
HOUSEHOLDS & INCOME	1 MILE	3 MILES	5 MILES
Total households	2,374	21,760	45,170
# of persons per HH	2.6	2.7	2.8
Average HH income	\$35,966	\$43,189	\$46,104
Average house value	\$120,731	\$92,234	\$83,946

\* Demographic data derived from 2010 US Census

**LAURA SCHABERG**  
laura@joeadame.com  
O: 361.880.5888  
C: 361.834.5111

JOEADAME.COM



# Information About Brokerage Services

*Texas law requires all real estate license holders to give the following information about brokerage services to prospective buyers, tenants, sellers and landlords.*



**TYPES OF REAL ESTATE LICENSE HOLDERS:**

- **A BROKER** is responsible for all brokerage activities, including acts performed by sales agents sponsored by the broker.
- **A SALES AGENT** must be sponsored by a broker and works with clients on behalf of the broker.

**A BROKER'S MINIMUM DUTIES REQUIRED BY LAW (A client is the person or party that the broker represents):**

- Put the interests of the client above all others, including the broker's own interests;
- Inform the client of any material information about the property or transaction received by the broker;
- Answer the client's questions and present any offer to or counter-offer from the client; and
- Treat all parties to a real estate transaction honestly and fairly.

**A LICENSE HOLDER CAN REPRESENT A PARTY IN A REAL ESTATE TRANSACTION:**

**AS AGENT FOR OWNER (SELLER/LANDLORD):** The broker becomes the property owner's agent through an agreement with the owner, usually in a written listing to sell or property management agreement. An owner's agent must perform the broker's minimum duties above and must inform the owner of any material information about the property or transaction known by the agent, including information disclosed to the agent or subagent by the buyer or buyer's agent.

**AS AGENT FOR BUYER/TENANT:** The broker becomes the buyer/tenant's agent by agreeing to represent the buyer, usually through a written representation agreement. A buyer's agent must perform the broker's minimum duties above and must inform the buyer of any material information about the property or transaction known by the agent, including information disclosed to the agent by the seller or seller's agent.

**AS AGENT FOR BOTH - INTERMEDIARY:** To act as an intermediary between the parties the broker must first obtain the written agreement of *each party* to the transaction. The written agreement must state who will pay the broker and, in conspicuous bold or underlined print, set forth the broker's obligations as an intermediary. A broker who acts as an intermediary:

- Must treat all parties to the transaction impartially and fairly;
- May, with the parties' written consent, appoint a different license holder associated with the broker to each party (owner and buyer) to communicate with, provide opinions and advice to, and carry out the instructions of each party to the transaction.
- Must not, unless specifically authorized in writing to do so by the party, disclose:
  - o that the owner will accept a price less than the written asking price;
  - o that the buyer/tenant will pay a price greater than the price submitted in a written offer; and
  - o any confidential information or any other information that a party specifically instructs the broker in writing not to disclose, unless required to do so by law.

**AS SUBAGENT:** A license holder acts as a subagent when aiding a buyer in a transaction without an agreement to represent the buyer. A subagent can assist the buyer but does not represent the buyer and must place the interests of the owner first.

**TO AVOID DISPUTES, ALL AGREEMENTS BETWEEN YOU AND A BROKER SHOULD BE IN WRITING AND CLEARLY ESTABLISH:**

- The broker's duties and responsibilities to you, and your obligations under the representation agreement.
- Who will pay the broker for services provided to you, when payment will be made and how the payment will be calculated.

**LICENSE HOLDER CONTACT INFORMATION:** This notice is being provided for information purposes. It does not create an obligation for you to use the broker's services. Please acknowledge receipt of this notice below and retain a copy for your records.

Joe Adame & Associates, Inc.	416864	joe@joeadame.com	361-880-5888
Licensed Broker /Broker Firm Name or Primary Assumed Business Name	License No.	Email	Phone
Joe Adame	145894	joe@joeadame.com	361-880-5888
Designated Broker of Firm	License No.	Email	Phone
Mark Adame	480169	mark@joeadame.com	361-880-5888
Licensed Supervisor of Sales Agent/ Associate	License No.	Email	Phone
Laura Schaberg	523693	laura@joeadame.com	361-880-5888
Sales Agent/Associate's Name	License No.	Email	Phone

\_\_\_\_\_  
Buyer/Tenant/Seller/Landlord Initials

\_\_\_\_\_  
Date