

FOR LEASE

21,000 | 10,500 - 24,500 | 62,877
SQUARE FEET FOR LEASE
SUITE 3331, 3339, 3345 PANAM I



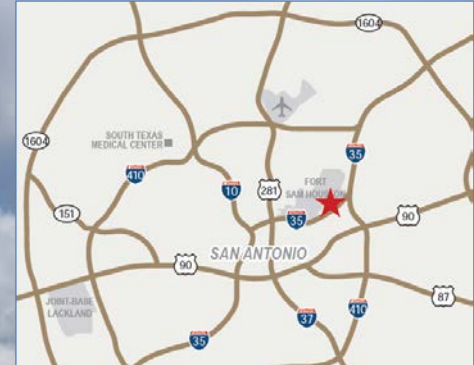
21,000 SF
AVAILABLE

10,500 - 24,500 SF
AVAILABLE

62,877 SF
AVAILABLE

FOR LEASE

21,000 | 10,500 - 24,500 | 62,877
SQUARE FEET FOR LEASE
SUITE 3331, 3339, 3345 PANAM I



GENERAL BUILDING INFORMATION

- **FOUR SUITES AVAILABLE**
- **24' CLEAR HEIGHT**
- **ESFR SPRINKLER READY**
- **NEW ROOF | 2017**
- **SUITE 3331 – 21,000 SF**
- **SUITE 3339 – 10,500 – 24,500 SF**
- **SUITE 3345 – 62,877 SF**
- **AMPLE OUTSIDE STORAGE**
- **FRONT LOADER**



Leasing By:

Charlie Hargis
210-918-6388 office
210-286-4536 cell
chargis@endurasa.com



Owned + Managed By:



The information contained herein has been given to us by the owner of the property or other sources we deem reliable, we have no reason to doubt the accuracy, but we do not guarantee it. All information should be verified prior to lease.



**21,000 SF
AVAILABLE**

**10,500 – 24,500 SF
AVAILABLE**

**62,877 SF
AVAILABLE**

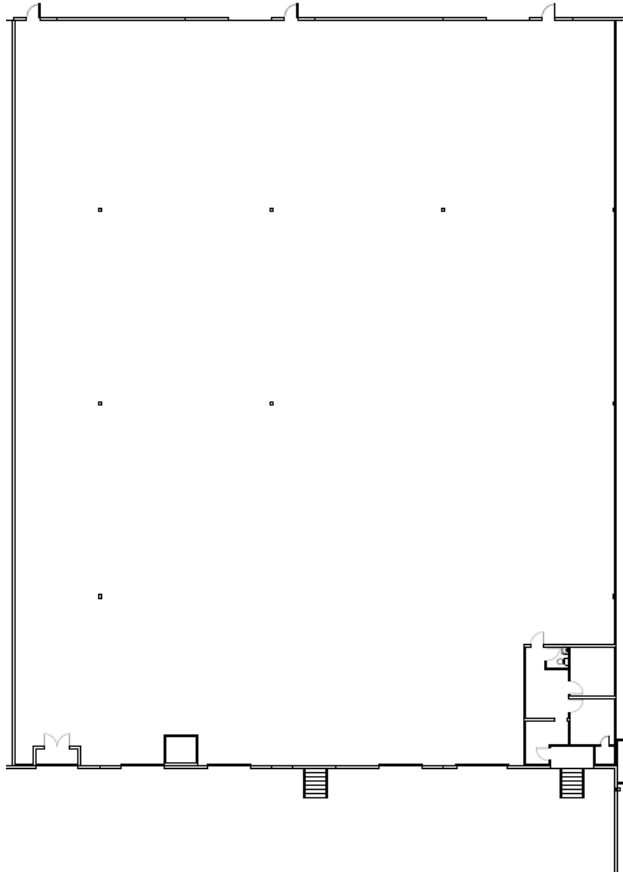


FOR LEASE

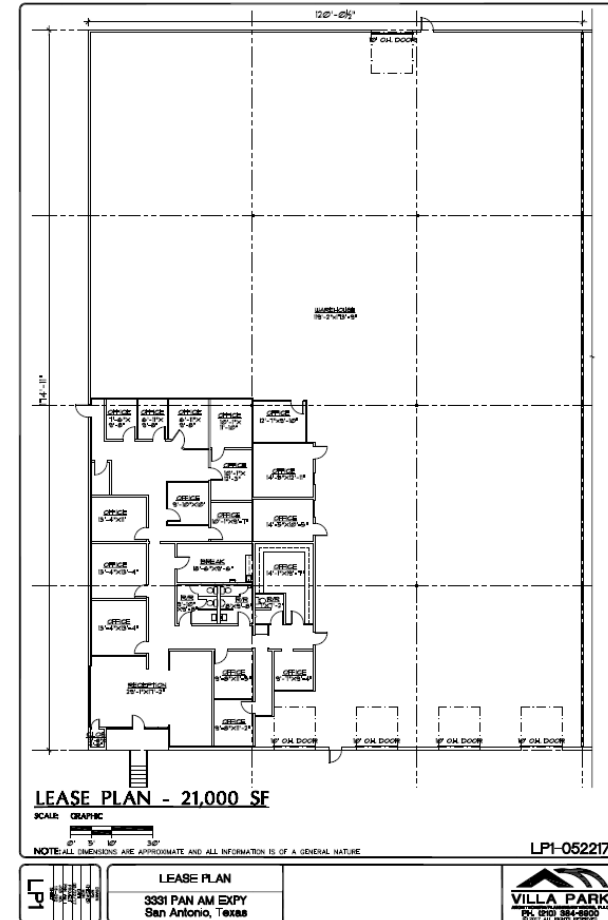
21,000 | 10,500 - 24,500 | 62,877
SQUARE FEET FOR LEASE
SUITE 3331, 3339, 3345 PANAM I



SUITE 3339 10,500-24,500 SF AVAILABLE



SUITE 3331 21,000 SF AVAILABLE



CHARLIE HARGIS
210-918-6388 OFFICE
210-286-4536 CELL
CHARGIS@ENDURASA.COM

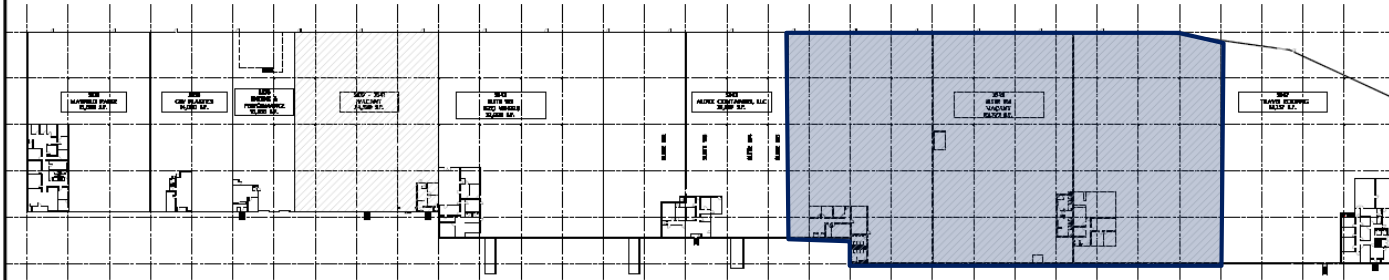


FOR LEASE

21,000 | 10,500 - 24,500 | 62,877
SQUARE FEET FOR LEASE
SUITE 3331, 3339, 3345 PANAM I



SUITE 3345 62,877 SF AVAILABLE



LEASE PLAN

SCALE: GRAPHIC



NORTH

NOTE: ALL DIMENSIONS ARE APPROXIMATE AND ALL INFORMATION IS OF GENERAL NATURE

LPI-071919



LEASE PLAN
PAN AM I
3331-3347 PAN AM EXFY
San Antonio, Texas



CHARLIE HARGIS
210-918-6388 OFFICE
210-286-4536 CELL
CHARGIS@ENDURASA.COM



The information contained herein has been given to us by the owner of the property or other sources we deem reliable, we have no reason to doubt the accuracy, but we do not guarantee it. All information should be verified prior to lease.

FOR LEASE

21,000 | 10,500 - 24,500 | 62,877
SQUARE FEET FOR LEASE
SUITE 3331, 3339, 3345 PANAM I



MARKETED BY:

CHARLIE HARGIS
210-918-6388 OFFICE
210-286-4536 CELL
CHARGIS@ENDURASA.COM

SUITE 3331
21,000 SF
AVAILABLE

SUITE 3339
10,500 - 24,500 SF
AVAILABLE

SUITE 3345
62,877 SF
AVAILABLE

PAN AM
DISTRIBUTION
CENTER
BUILDING I

