

LAND
FOR SALE

329.4 ACRES - HIGHWAY 290

0 HIGHWAY 290, HEMPSTEAD, TX 77445



SALE PRICE

\$7,800,000

OFFERING SUMMARY

Available SF: 14,348,664 SF

Lot Size: 329.4 Acres

Market: Northwest

Submarket: Hempstead / Waller

PROPERTY HIGHLIGHTS

- Contiguous Tracts Totaling Approx. 329 Acres
- Outstanding Development or Investment Opportunity in Rapidly Expanding Hempstead Texas
- Excellent Location on High Commute Corridor
- *Tract 2: ±160 Acres - \$30,000 Per Acre
- REDUCED Total Price for both Tracts: \$7,800,000.00 (\$23,700 Per Acre)
- Great Visibility on Hwy. 290 & FM 1488, with over a mile of frontage on US-290
- Average Traffic of over 48,000 Vehicles Per Day on Hwy 290 & over 17,000 Vehicles Per Day on Hwy 6
- Located Adjacent to Former Lawrence Marshall Dealership at Hwy. 290 & Hwy. 6
- Situated in Waller County & Hempstead ISD, Total Tax Rate for 2019: \$2.56 Per \$100 of Assessed Value
- Owner Willing to Divide, Please Call Brokers For More Information

FOR MORE INFORMATION, PLEASE CONTACT:

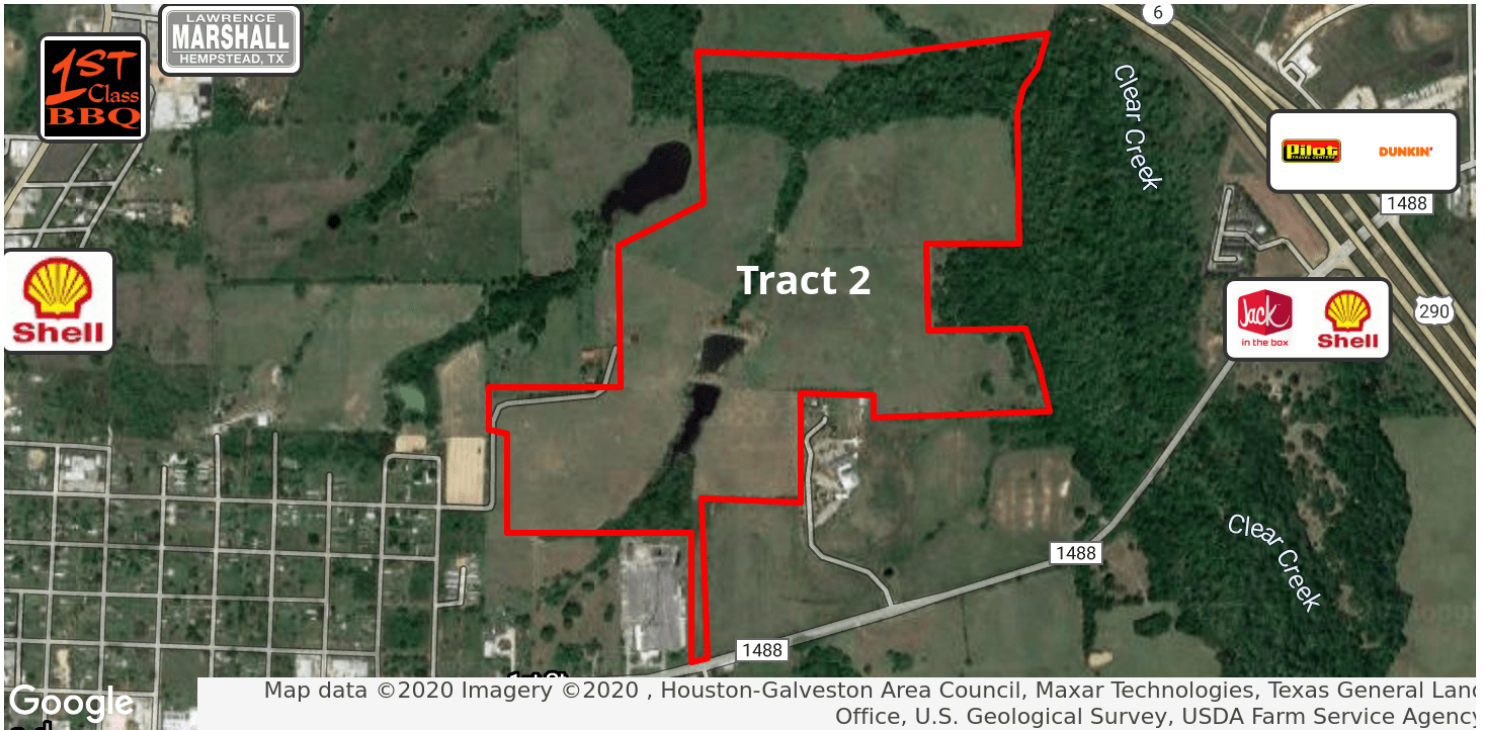
JOEL C. ENGLISH
PRESIDENT/PRINCIPAL
713.473.7200
JOEL@TEXASCRES.COM

PATRICK WOLFORD, SIOR, CCIM
PRINCIPAL
713.744.7436
PWOLFORD@LEE-ASSOCIATES.COM

LAND
FOR SALE

329.4 ACRES - HIGHWAY 290

0 HIGHWAY 290, HEMPSTEAD, TX 77445



FOR MORE INFORMATION, PLEASE CONTACT:

JOEL C. ENGLISH
PRESIDENT/PRINCIPAL
713.473.7200
JOEL@TEXASCRES.COM

PATRICK WOLFORD, SIOR, CCIM
PRINCIPAL
713.744.7436
PWOLFORD@LEE-ASSOCIATES.COM

LAND
FOR SALE

329.4 ACRES - HIGHWAY 290

0 HIGHWAY 290, HEMPSTEAD, TX 77445



FOR MORE INFORMATION, PLEASE CONTACT:

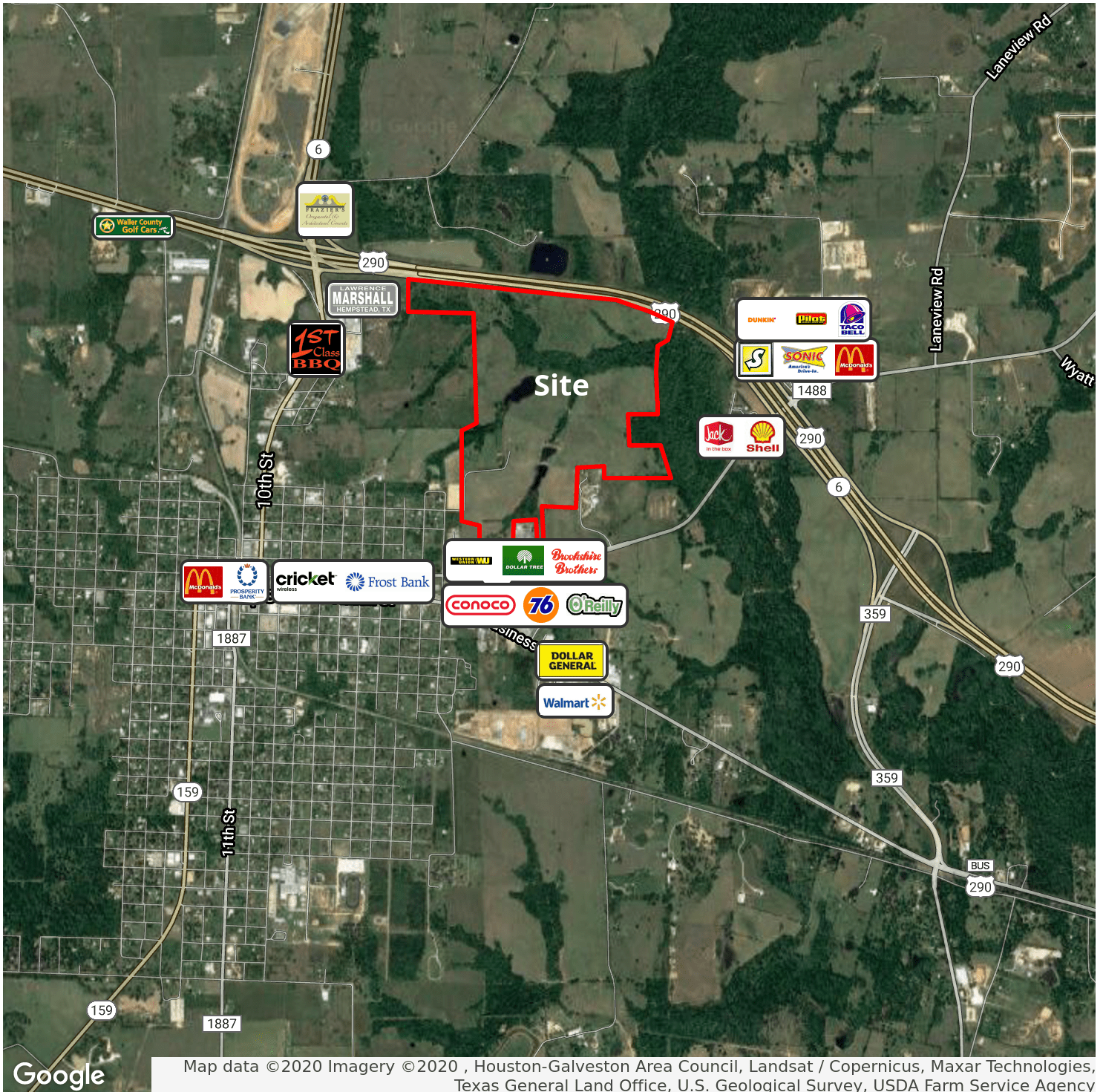
JOEL C. ENGLISH
PRESIDENT/PRINCIPAL
713.473.7200
JOEL@TEXASCRES.COM

PATRICK WOLFORD, SIOR, CCIM
PRINCIPAL
713.744.7436
PWOLFORD@LEE-ASSOCIATES.COM

LAND
FOR SALE

329.4 ACRES - HIGHWAY 290

0 HIGHWAY 290, HEMPSTEAD, TX 77445



FOR MORE INFORMATION, PLEASE CONTACT:

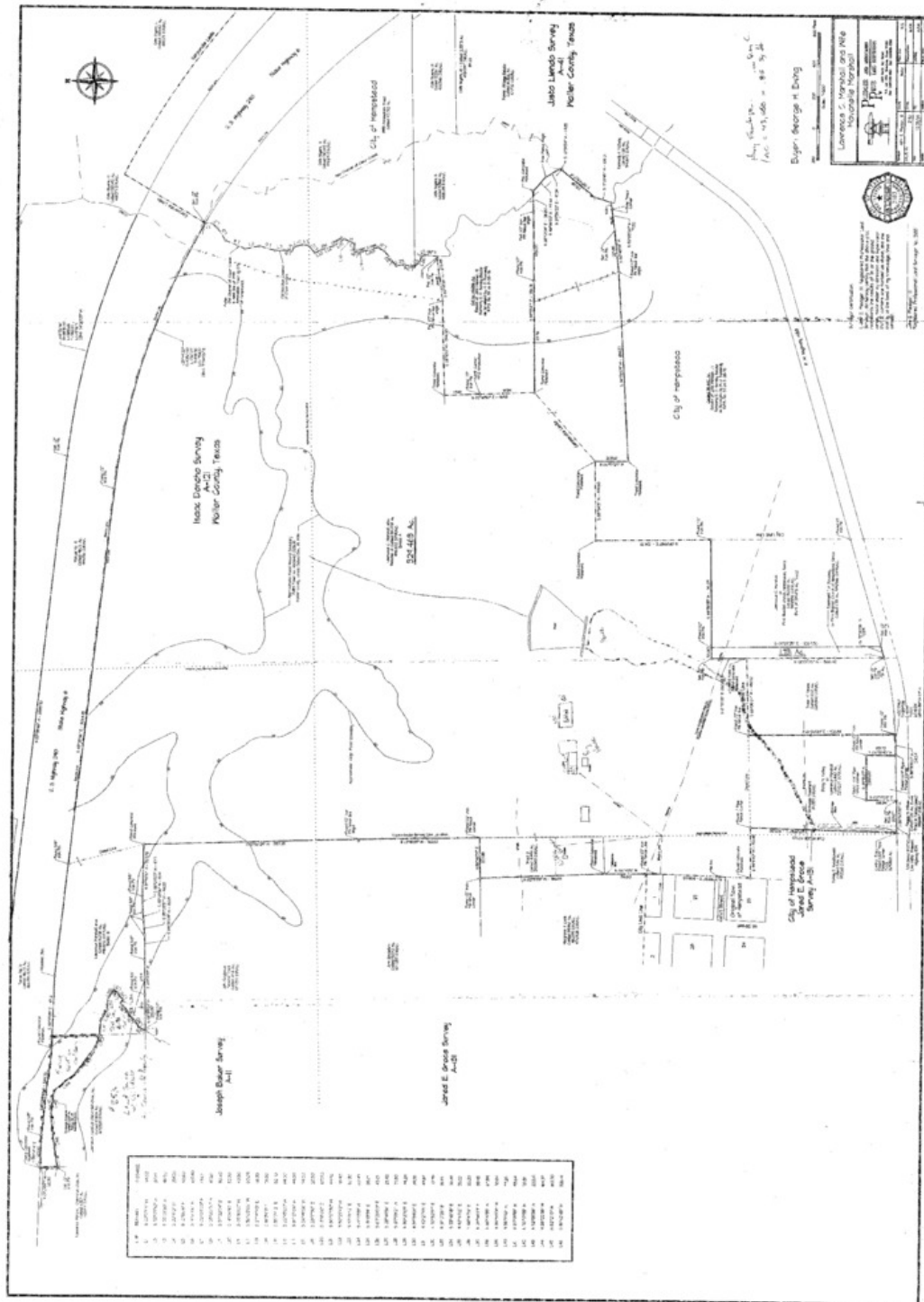
JOEL C. ENGLISH
PRESIDENT/PRINCIPAL
713.473.7200
JOEL@TEXASCRES.COM

PATRICK WOLFORD, SIOR, CCIM
PRINCIPAL
713.744.7436
PWOLFORD@LEE-ASSOCIATES.COM

LAND
FOR SALE

329.4 ACRES - HIGHWAY 290

0 HIGHWAY 290, HEMPSTEAD, TX 77445



FOR MORE INFORMATION, PLEASE CONTACT:

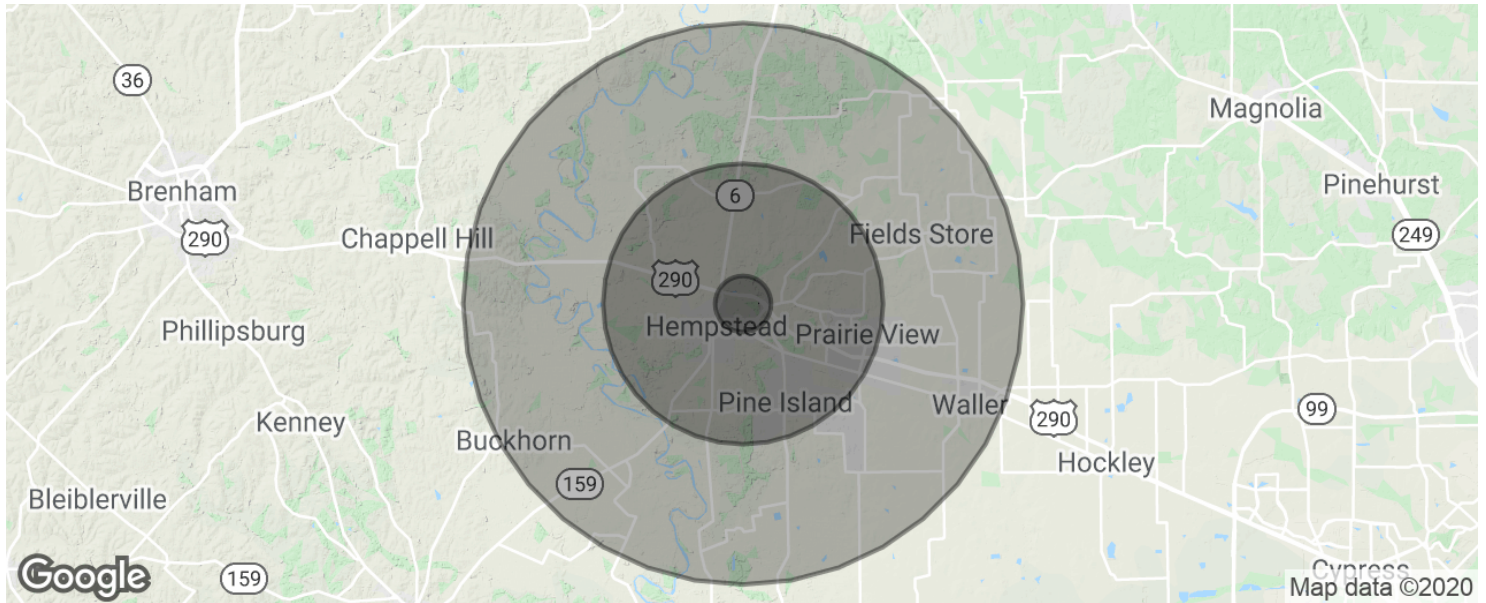
JOEL C. ENGLISH
PRESIDENT/PRINCIPAL
713.473.7200
JOEL@TEXASCRES.COM

PATRICK WOLFORD, SIOR, CCIM
PRINCIPAL
713.744.7436
PWOLFORD@LEE-ASSOCIATES.COM

LAND FOR SALE

329.4 ACRES - HIGHWAY 290

0 HIGHWAY 290, HEMPSTEAD, TX 77445



POPULATION	1 MILE	5 MILES	10 MILES
Total population	179	5,681	22,154
Median age	39.6	33.4	33.2
Median age (Male)	40.6	34.0	33.7
Median age (Female)	38.8	32.7	32.6
HOUSEHOLDS & INCOME	1 MILE	5 MILES	10 MILES
Total households	65	2,030	7,688
# of persons per HH	2.8	2.8	2.9
Average HH income	\$48,836	\$53,566	\$56,947
Average house value		\$181,838	\$179,418

* Demographic data derived from 2010 US Census

FOR MORE INFORMATION, PLEASE CONTACT:

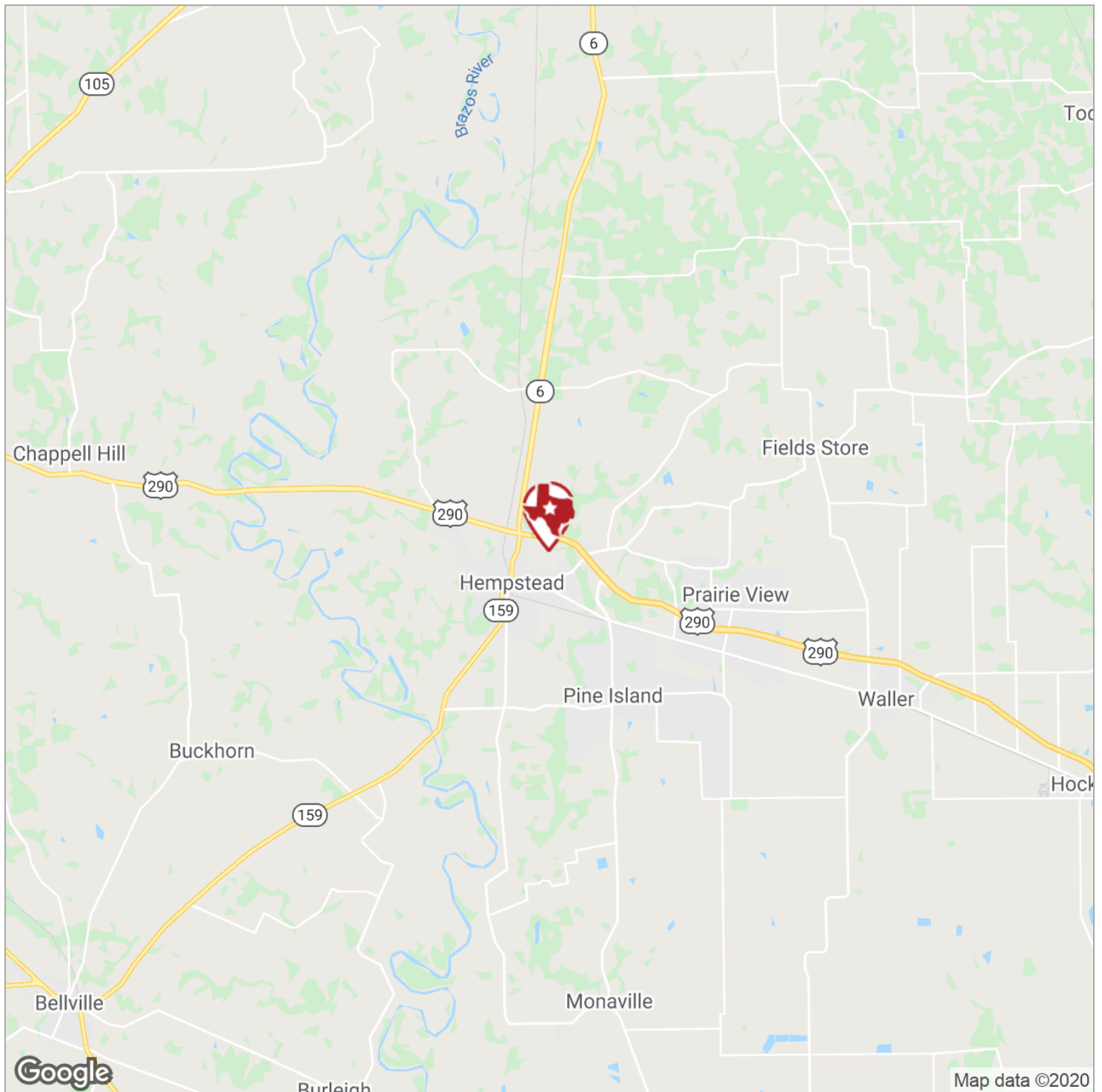
JOEL C. ENGLISH
PRESIDENT/PRINCIPAL
713.473.7200
JOEL@TEXASCRES.COM

PATRICK WOLFORD, SIOR, CCIM
PRINCIPAL
713.744.7436
PWOLFORD@LEE-ASSOCIATES.COM

LAND
FOR SALE

329.4 ACRES - HIGHWAY 290

0 HIGHWAY 290, HEMPSTEAD, TX 77445



FOR MORE INFORMATION, PLEASE CONTACT:

JOEL C. ENGLISH
PRESIDENT/PRINCIPAL
713.473.7200
JOEL@TEXASCRES.COM

PATRICK WOLFORD, SIOR, CCIM
PRINCIPAL
713.744.7436
PWOLFORD@LEE-ASSOCIATES.COM

LAND FOR SALE

329.4 ACRES - HIGHWAY 290

0 HIGHWAY 290, HEMPSTEAD, TX 77445



Information About Brokerage Services

11-2-2015

Texas law requires all real estate license holders to give the following information about brokerage services to prospective buyers, tenants, sellers and landlords.

TYPES OF REAL ESTATE LICENSE HOLDERS:

- A **BROKER** is responsible for all brokerage activities, including acts performed by sales agents sponsored by the broker.
- A **SALES AGENT** must be sponsored by a broker and works with clients on behalf of the broker.

A BROKER'S MINIMUM DUTIES REQUIRED BY LAW (A client is the person or party that the broker represents):

- Put the interests of the client above all others, including the broker's own interests;
- Inform the client of any material information about the property or transaction received by the broker;
- Answer the client's questions and present any offer to or counter-offer from the client; and
- Treat all parties to a real estate transaction honestly and fairly.

A LICENSE HOLDER CAN REPRESENT A PARTY IN A REAL ESTATE TRANSACTION:

AS AGENT FOR OWNER (SELLER/LANDLORD): The broker becomes the property owner's agent through an agreement with the owner, usually in a written listing to sell or property management agreement. An owner's agent must perform the broker's minimum duties above and must inform the owner of any material information about the property or transaction known by the agent, including information disclosed to the agent or subagent by the buyer or buyer's agent.

AS AGENT FOR BUYER/TENANT: The broker becomes the buyer/tenant's agent by agreeing to represent the buyer, usually through a written representation agreement. A buyer's agent must perform the broker's minimum duties above and must inform the buyer of any material information about the property or transaction known by the agent, including information disclosed to the agent by the seller or seller's agent.

AS AGENT FOR BOTH - INTERMEDIARY: To act as an intermediary between the parties the broker must first obtain the written agreement of *each party* to the transaction. The written agreement must state who will pay the broker and, in conspicuous bold or underlined print, set forth the broker's obligations as an intermediary. A broker who acts as an intermediary:

- Must treat all parties to the transaction impartially and fairly;
- May, with the parties' written consent, appoint a different license holder associated with the broker to each party (owner and buyer) to communicate with, provide opinions and advice to, and carry out the instructions of each party to the transaction.
- Must not, unless specifically authorized in writing to do so by the party, disclose:
 - that the owner will accept a price less than the written asking price;
 - that the buyer/tenant will pay a price greater than the price submitted in a written offer; and
 - any confidential information or any other information that a party specifically instructs the broker in writing not to disclose, unless required to do so by law.

AS SUBAGENT: A license holder acts as a subagent when aiding a buyer in a transaction without an agreement to represent the buyer. A subagent can assist the buyer but does not represent the buyer and must place the interests of the owner first.

TO AVOID DISPUTES, ALL AGREEMENTS BETWEEN YOU AND A BROKER SHOULD BE IN WRITING AND CLEARLY ESTABLISH:

- The broker's duties and responsibilities to you, and your obligations under the representation agreement.
- Who will pay the broker for services provided to you, when payment will be made and how the payment will be calculated.

LICENSE HOLDER CONTACT INFORMATION: This notice is being provided for information purposes. It does not create an obligation for you to use the broker's services. Please acknowledge receipt of this notice below and retain a copy for your records.

<u>Texas CRES, LLC</u>	<u>9004590</u>	<u>joel@texascres.com</u>	<u>(713) 473-7200</u>
Licensed Broker/Broker Firm Name or Primary Assumed Business Name	License No.	Email	Phone
<u>Joel C. English</u>	<u>465800</u>	<u>joel@texascres.com</u>	<u>(713) 473-7200</u>
Designated Broker of Firm	License No.	Email	Phone
<u>Joel C. English</u>	<u>465800</u>	<u>joel@texascres.com</u>	<u>(713) 473-7200</u>
Licensed Supervisor of Sales Agent/ Associate	License No.	Email	Phone
_____ Sales Agent/Associate's Name	_____ License No.	_____ Email	_____ Phone

Buyer/Tenant/Seller/Landlord Initials

Date

Regulated by the Texas Real Estate Commission

Information available at www.trec.texas.gov

TAR 2501

IABS 1-0

This form was produced by the subscriber named below through Texas FormSource.

Texas C.R.E.S. LLC, 11020 Sathoff Drive Cypress, TX 77429

Phone: (713) 907-1707

Fax:

New IABS

Tracy Kiep

Produced with zipForm® by zipLogix 18070 Fifteen Mile Road, Fraser, Michigan 48026

www.ziplogix.com

FOR MORE INFORMATION, PLEASE CONTACT:

JOEL C. ENGLISH
PRESIDENT/PRINCIPAL
713.473.7200
JOEL@TEXASCRES.COM

PATRICK WOLFORD, SIOR, CCIM
PRINCIPAL
713.744.7436
PWOLFORD@LEE-ASSOCIATES.COM

LEE & ASSOCIATES
COMMERCIAL REAL ESTATE SERVICES

LAND
FOR SALE

329.4 ACRES - HIGHWAY 290

0 HIGHWAY 290, HEMPSTEAD, TX 77445

Information contained in this marketing piece is furnished by property owners and brokers who acquire the information from third party websites, county appraisal districts, appraisers, tax services and inspectors.

The information is shared with Texas CRES, LLC for reference and for marketing purposes.

Texas CRES, LLC makes no representations to the validity or accuracy of the information.

Neither the listing Broker, or the property owner make any warranty, guarantee, or representation to the accuracy of the information.

You should rely exclusively on your own property research and studies to confirm the accuracy of any information contained herein

FOR MORE INFORMATION, PLEASE CONTACT:

JOEL C. ENGLISH
PRESIDENT/PRINCIPAL
713.473.7200
JOEL@TEXASCRES.COM

PATRICK WOLFORD, SIOR, CCIM
PRINCIPAL
713.744.7436
PWOLFORD@LEE-ASSOCIATES.COM