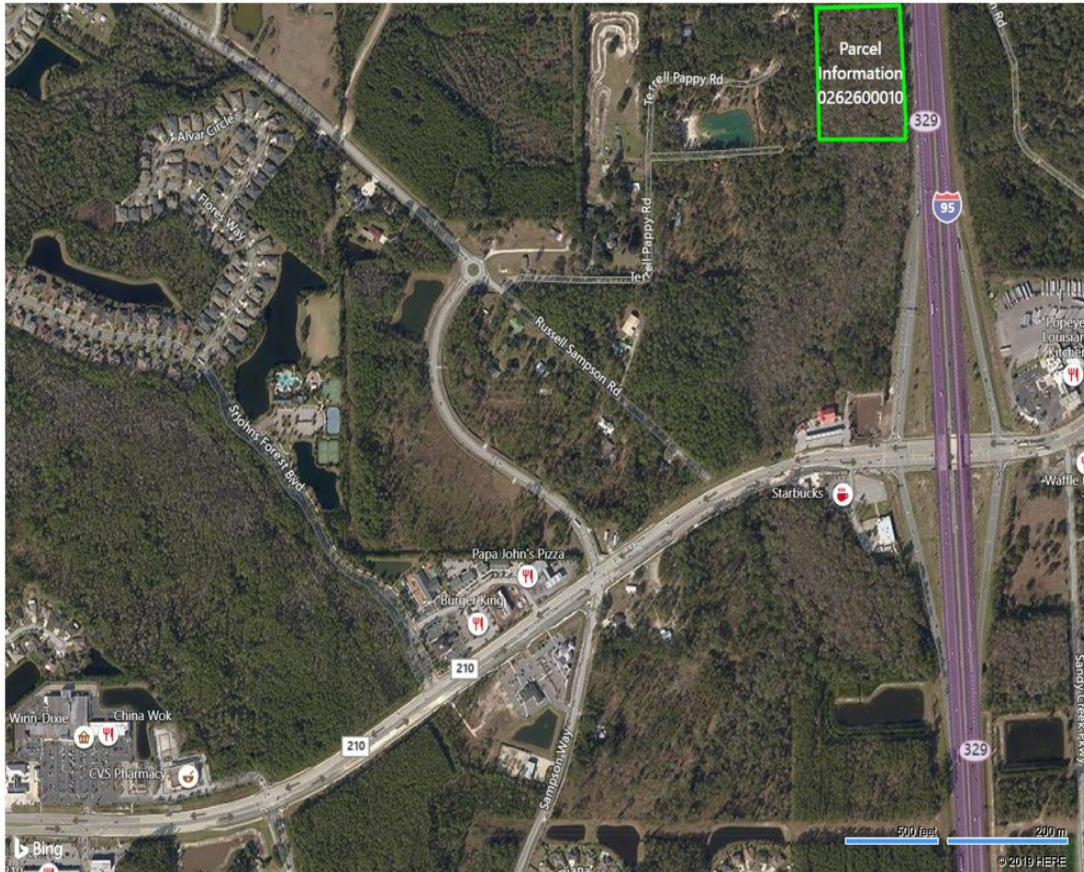


# Vacant Land

I-95, Saint Augustine, FL 32259



Commercial Realty, Inc.

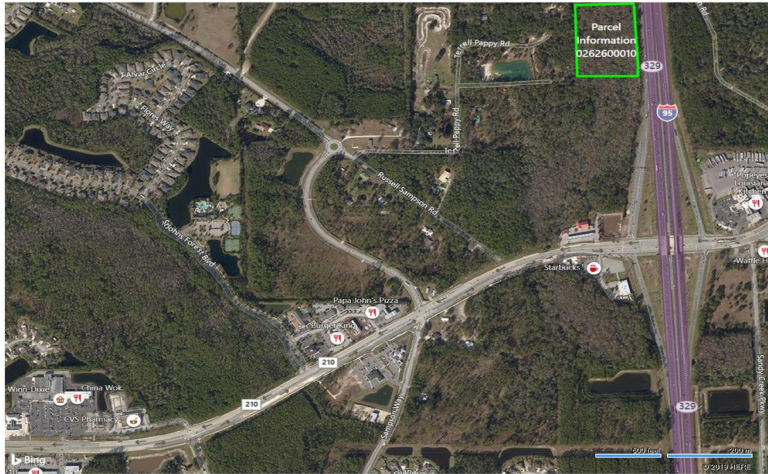


## Price: \$720,000

- Over 675 feet of I-95 Frontage; 1/3 mile north from County Road 210
- Over 50,000 daily traffic volume (CoStar)
- Zoning: Open Rural
- Florida land use designation: Mixed Use (Future Land Use: 2025 Comprehensive Plan, St. Johns County, FL)
- 14th fastest-growing county in America (St. Johns County, FL), U.S. Census Bureau, May 2018
  - o St. Johns County, FL has a population of 218,362, DATAUSA
- One Mile Radius of Property (CoStar)
  - o Median Household Income: \$103,365
  - o Average Age: 38
- Median Household Income in St. Johns County is \$73,640, compared to the state's median income of \$50,883, 247wallstreet.
- St. Johns County School District is one of only two counties in the state of Florida that is an "A" rated district, Florida Department of Education, June 2018
- Healthiest County in the State of Florida, St. Johns County, FL, 247wallstreet.

# Vacant Land

I-95, Saint Augustine, FL 32259



[https://www.bing.com/maps?style=b&vli=18&cp=30.070224562363524--81.49974731939602&sp=polygon:30.0693251527286\\_-81.49895599784267\\_30.069325722442787\\_-81.50047716939596\\_30.0...](https://www.bing.com/maps?style=b&vli=18&cp=30.070224562363524--81.49974731939602&sp=polygon:30.0693251527286_-81.49895599784267_30.069325722442787_-81.50047716939596_30.0...) 2/2

I-95 & CR-210 St. Johns County, Frontage  
Over 675' of I-95 Frontage  
14th fastest-growing county in America



**William Messer**

[wmesser@watsoncommercial.com](mailto:wmesser@watsoncommercial.com)

(904) 421-7414

**Watson Commercial Realty, Inc.**

4685 Sunbeam Rd  
Jacksonville, FL 32257



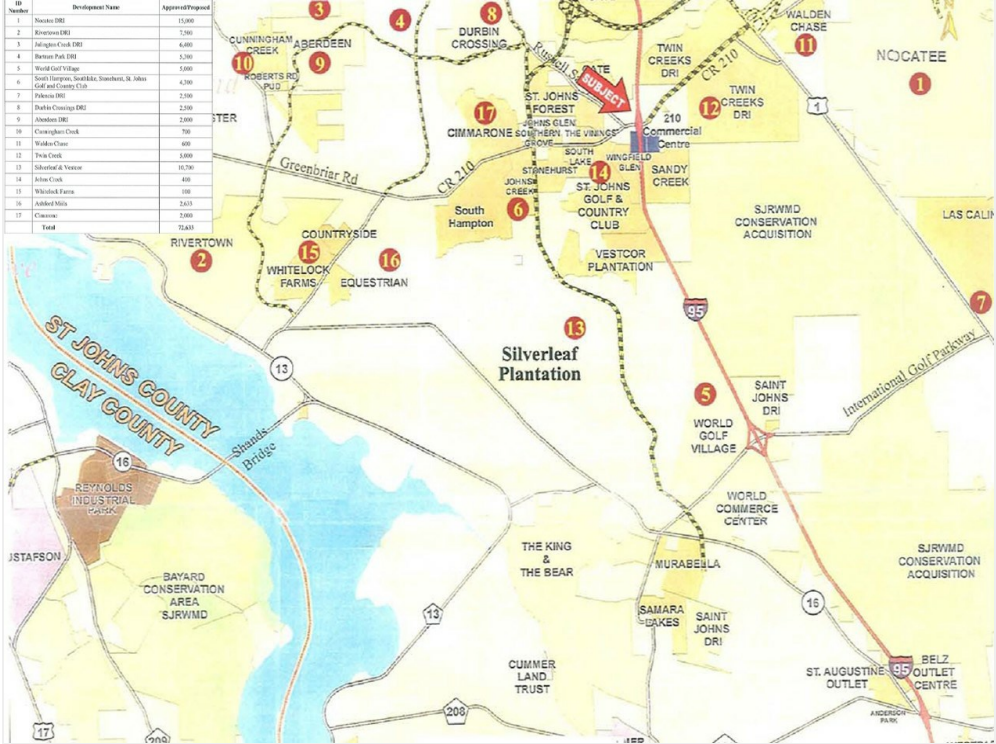
# Vacant Land

I-95, Saint Augustine, FL 32259

## Property Photos



I-95 View To CR-210 From Site Interstate Frontage



Other

# Vacant Land

I-95, Saint Augustine, FL 32259

## Location

