

CITY OF MUSTANG RIDGE, TEXAS ZONING & FLOODPLAIN MAP

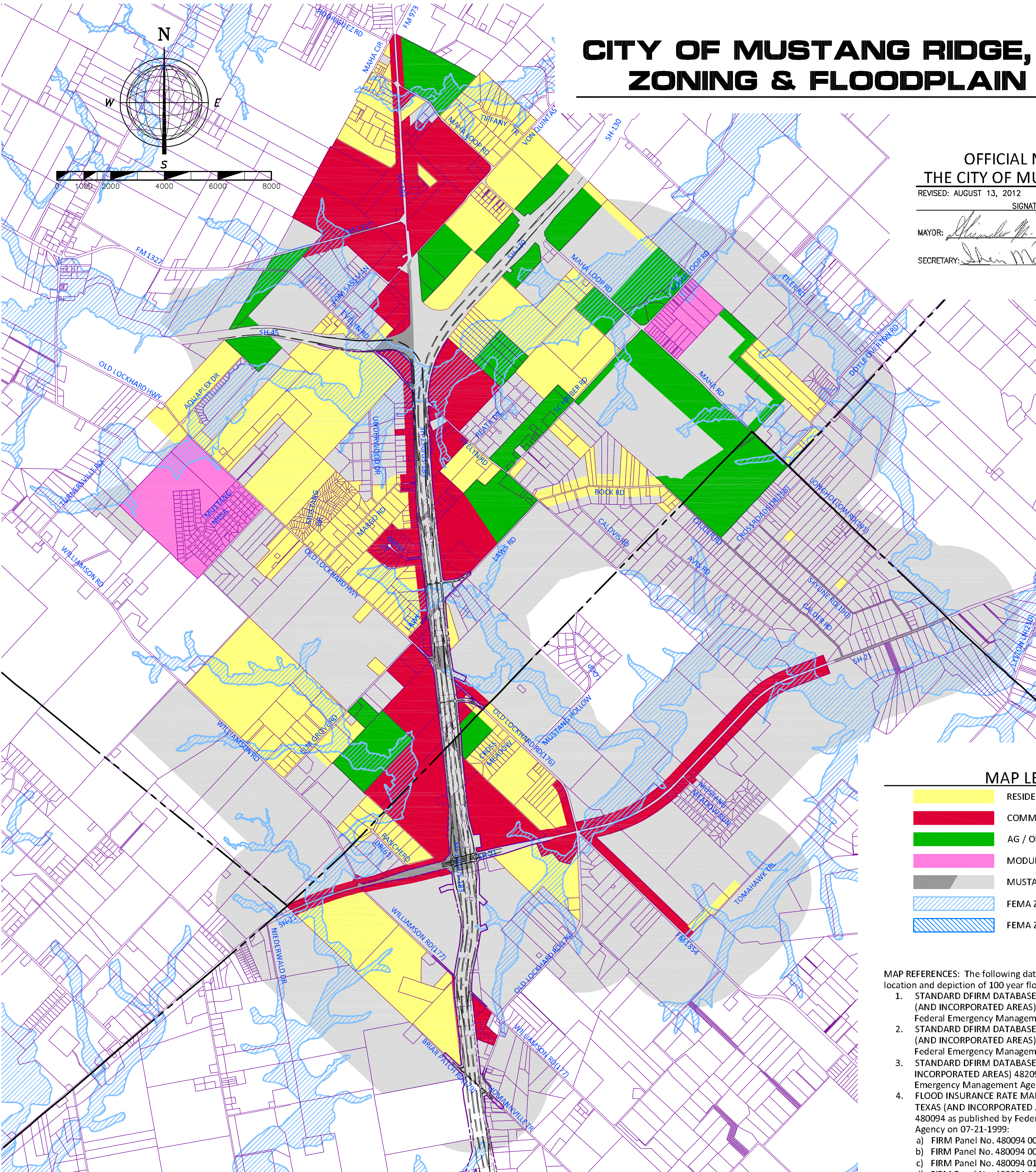
OFFICIAL MAP FOR
THE CITY OF MUSTANG RIDGE

REVISED: AUGUST 13, 2012

SIGNATURES:

MAYOR: *Shirley M. Flannery* 8-15-12
DATE

SECRETARY: *Shirley M. Flannery* 8-15-12
DATE



MAP LEGEND

- RESIDENTIAL ZONING
- COMMERCIAL ZONING
- AG / OPEN SPACE ZONING
- MODULAR HOUSING ZONING
- MUSTANG RIDGE CITY LIMITS/ETJ
- FEMA ZONE A
- FEMA ZONE AE

MAP REFERENCES: The following data sources were utilized in the location and depiction of 100 year floodplain indicated hereon.

1. STANDARD DFIRM DATABASE, TRAVIS COUNTY, TEXAS (AND INCORPORATED AREAS) 48453C as published by Federal Emergency Management Agency on 09-26-2008
2. STANDARD DFIRM DATABASE, BASTROP COUNTY, TEXAS (AND INCORPORATED AREAS) 48021C as published by Federal Emergency Management Agency on 01-19-2006
3. STANDARD DFIRM DATABASE, HAYS COUNTY, TEXAS (AND INCORPORATED AREAS) 48209C as published by Federal Emergency Management Agency on 09-02-2005
4. FLOOD INSURANCE RATE MAPS, CALDWELL COUNTY, TEXAS (AND INCORPORATED AREAS) Community number 480094 as published by Federal Emergency Management Agency on 07-21-1999:
 - a) FIRM Panel No. 480094 0025 C
 - b) FIRM Panel No. 480094 0050 C
 - c) FIRM Panel No. 480094 0100 C
 - d) FIRM Panel No. 480094 0125 C