



# 2802 BEE CAVE RD

**2802 BEE CAVE RD, AUSTIN, TX 78746**

ALEC SPENCER

Associate  
T 512.391.0718 x26 | C 858.354.0577  
aspencer@stcroixca.com





# FOR SALE | 2802 BEE CAVE RD

2802 BEE CAVE RD, AUSTIN, TX 78746



## OFFERING SUMMARY

Sale Price: \$999,900

Building Size: 1,232 SF

Lot Size: 0.18 Acres

## PROPERTY OVERVIEW

Formerly Mr. Gatti's Pizza, full 2nd generation kitchen buildout.

## PROPERTY HIGHLIGHTS

- City of Rollingwood
- C2 Zoning
- 6 Striped Parking Spots (1 Handicap)

ALEC SPENCER

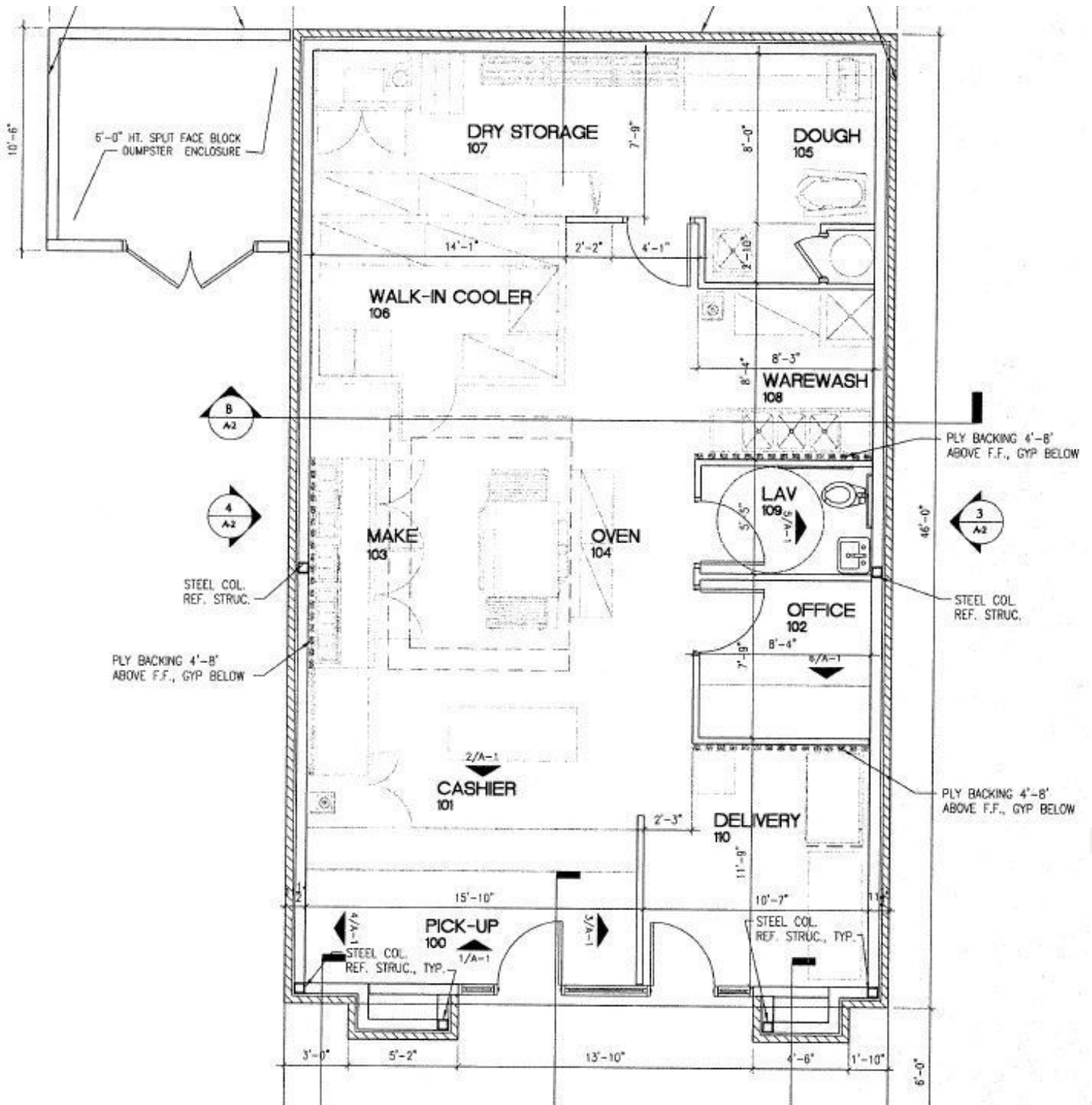
Associate  
T 512.391.0718 x26 | C 858.354.0577  
aspencer@stcroixca.com



[www.stcroixcra.com](http://www.stcroixcra.com)

# FOR SALE | 2802 BEE CAVE RD

2802 BEE CAVE RD, AUSTIN, TX 78746



ALEC SPENCER

Associate  
T 512.391.0718 x26 | C 858.354.0577  
aspencer@stcroixca.com



[www.stcroixcra.com](http://www.stcroixcra.com)



# FOR SALE | 2802 BEE CAVE RD

2802 BEE CAVE RD, AUSTIN, TX 78746



## POPULATION

	1 MILE	3 MILES	5 MILES
Total Population	6,227	75,737	239,919
Median age	42.0	36.3	32.9
Median age (Male)	41.1	36.1	32.9
Median age (Female)	42.3	36.0	32.6

## HOUSEHOLDS & INCOME

	1 MILE	3 MILES	5 MILES
Total households	2,774	36,482	104,260
# of persons per HH	2.2	2.1	2.3
Average HH income	\$144,933	\$103,252	\$84,661
Average house value	\$608,775	\$529,620	\$397,943

\* Demographic data derived from 2010 US Census

ALEC SPENCER

Associate  
 T 512.391.0718 x26 | C 858.354.0577  
 aspencer@stcroixca.com



www.stcroixcra.com