



**HIGHLIGHTS:**

- 10,866 New Homes under construction within a 1/4 mile of the site
- Now Pre-Leasing Anchor & Pads
- Strategically Positioned at the Heart of Menifee With Nearly 19,000 New Residential Units in Various Stages of Development & Planning Based on 8 Specific Plans and 65 Tract Maps
- Strong Traffic Counts with Over 23,000 Cars Per Day That Are Anticipated to Increase Dramatically
- Ideal For Grocery, Drug, Fast Food, Bank, Auto, Daycare, Fitness & Many Other Retail Uses

**Brian Bielatowicz**  
bbielatowicz@leetemecula.com  
D 951.445.4515  
DRE #01269887

Another Quality  
Development By:





## Property Location:

The property is strategically positioned in the City of Menifee, County of Riverside, California approximately 2 miles east of Interstate 215. Located at the northwest key intersection of Menifee Road and McCall Boulevard, the site is also bound by Junipero Road to the west. Surrounded by recently developed and newly planned residential housing projects such as the Heritage Lake Master Plan, Eldorado (Lenar Community), DR Horton Community & McCall Mesa TTM, the Heritage Square commercial development will fill a substantial retail need in the area.

<b>Property Address</b>	NWC Menifee Rd & McCall Blvd - Menifee, CA
<b>APN</b>	333-070-009, 333-070-044 & 333-070-052
<b>Lot SF</b>	Approximately 15.57 acres
<b>Zoning</b>	C-P-S (Scenic Highway Commercial)
<b>General Plan</b>	CR (Commercial Retail)



## DEMOGRAPHICS

DESCRIPTION	1 MILE	3 MILE	5 MILE
Population	5,543	47,491	100,729
Total Households	1,623	18,228	34,870
Median HH Income	\$116,225	\$64,279	\$70,545
Daytime Population	840	8,585	12,418

## TRAFFIC COUNTS

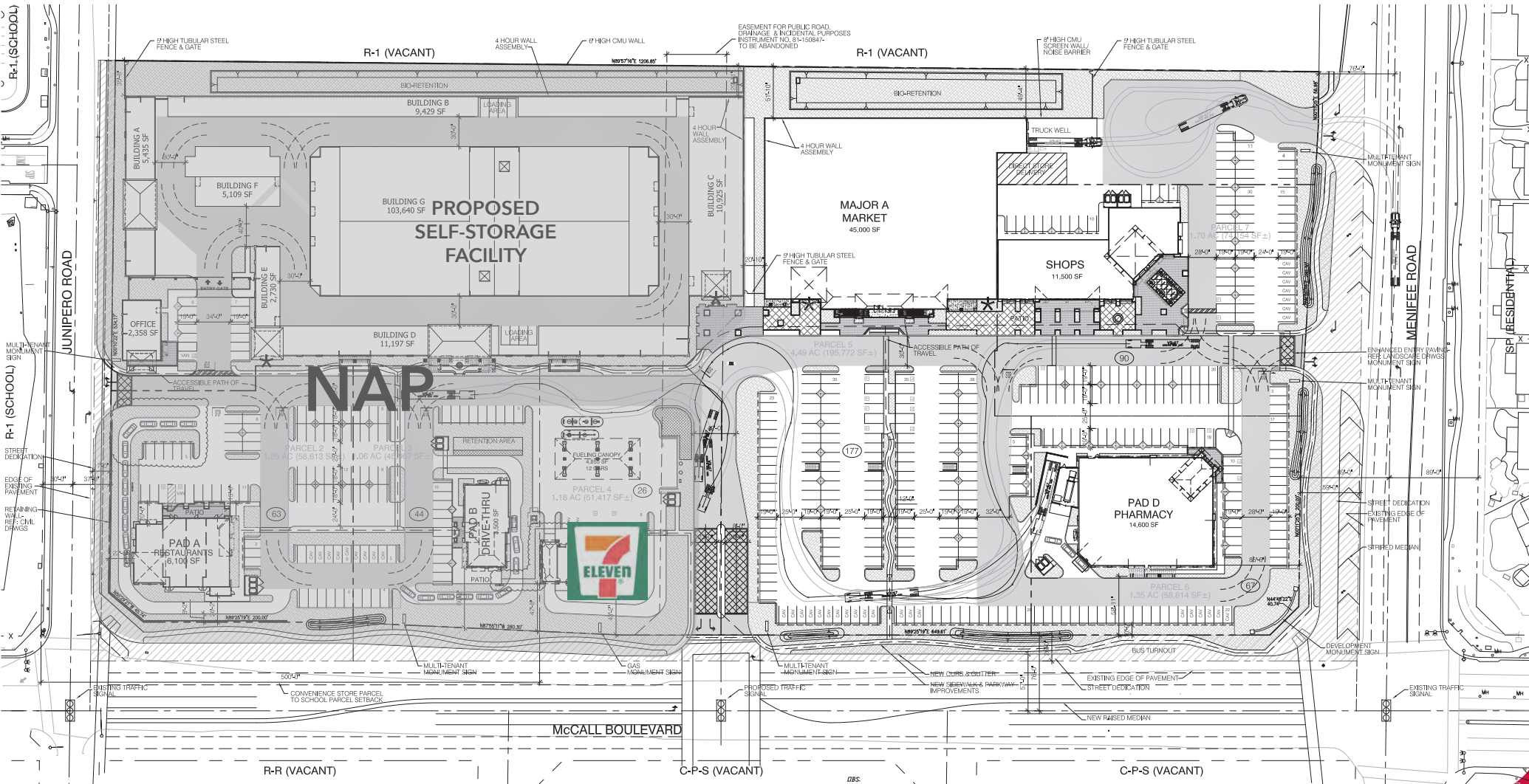
<b>±13,000 CPD</b>	<b>±10,000 CPD</b>
<b>AT MCCALL ROAD</b>	<b>AT MENIFEE ROAD</b>



**Brian Bielatowicz**  
 bbielatowicz@leetemecula.com  
 D 951.445.4515  
 DRE #01269887

No warranty or representation has been made to the accuracy of the foregoing information. Terms of sale or lease and availability are subject to change or withdrawal without notice. Lee & Associates Commercial Real Estate Services, Inc. - Riverside. 25240 Hancock Avenue, Suite 100 - Murrieta, CA 92562 Corporate ID# 01048055

# Conceptual Site Plan



NOW PRE-LEASING PHASE II

# MCCALL SQUARE

NWC MENIFEE ROAD & MCCALL BLVD. | MENIFEE, CA

## Conceptual Elevations

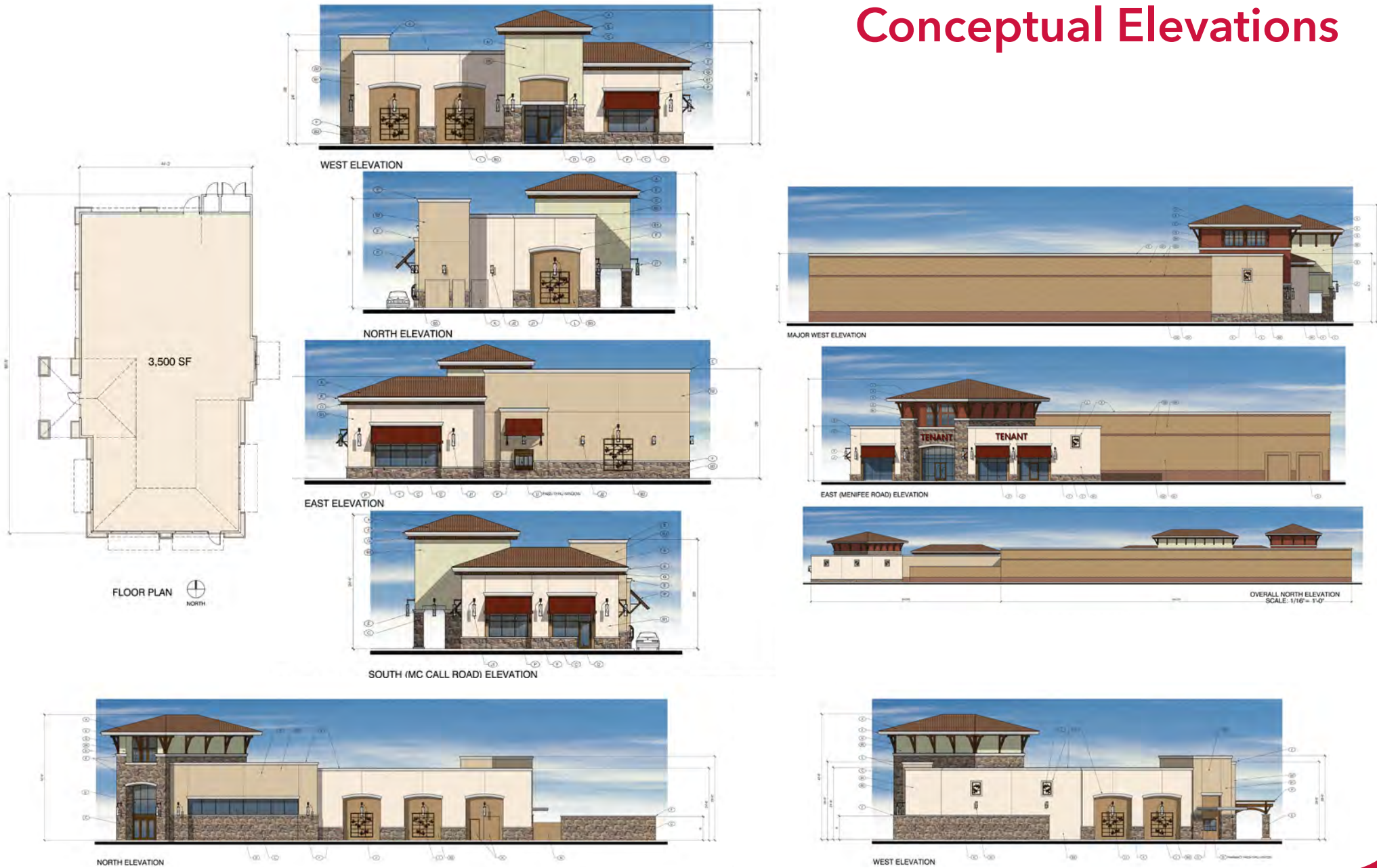


NOW PRE-LEASING PHASE II

# MCCALL SQUARE

NWC MENIFEE ROAD & MCCALL BLVD. | MENIFEE, CA

## Conceptual Elevations





NOW PRE-LEASING PHASE II

# MCCALL SQUARE

NWC MENIFEE ROAD & MCCALL BLVD. | MENIFEE, CA



**FLEMING RANCH**  
1,074 UNITS  
PLANNED

**KB HOMES**  
172 UNITS  
NOW UNDER  
CONSTRUCTION

**KB HOMES**  
971 UNITS  
NOW UNDER  
CONSTRUCTION

**BAYPORT NORTH LLC**  
240 APTS  
PLANNED

**LENNAR HOMES**  
258 UNITS  
NOW UNDER  
CONSTRUCTION

**BROOKFIELD  
HOMES /  
HERITAGE LAKE**  
7,616 UNITS  
PLANNED

**MCCALL BLVD**

**MENIFEE RD**

NOW PRE-LEASING PHASE II

# MCCALL SQUARE

NWC MENIFEE ROAD & MCCALL BLVD. | MENIFEE, CA



CALATLANTIC HOMES  
300 HOMES  
NOW UNDER  
CONSTRUCTION



CALATLANTIC HOMES  
235 HOMES  
CONSTRUCTION  
COMPLETED



BAYPORT NORTH LLC  
240 APTS  
PLANNED

MENIFEE RD

MCCALL BLVD

SITE