

INTERSTATE BUSINESS PARK

INDUSTRIAL / SHOWROOM

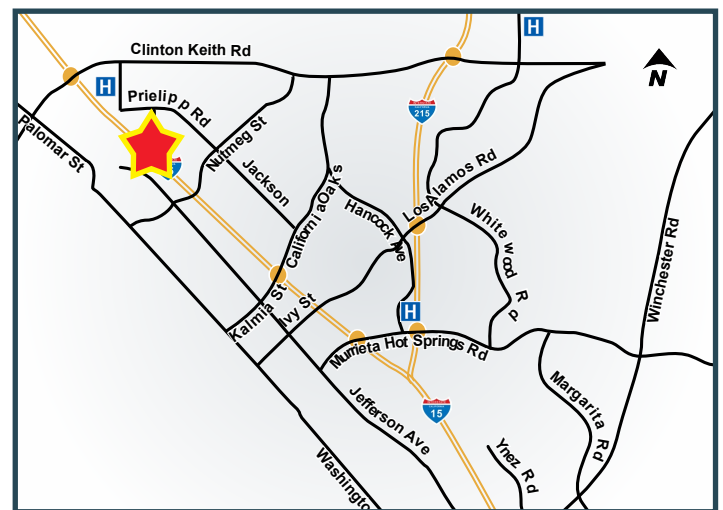
±4,478 SF FOR LEASE

24335 PRIELIPP RD, 123 & 124 - WILDOMAR, CA



BUILDING HIGHLIGHTS:

- ◆ ±229,990 SF, Four Building Business Park
- ◆ Outstanding 1-15 Freeway Frontage & Visibility
- ◆ 160,000 Cars per Day (I-15 & Clinton Keith Rd.)
- ◆ Dock High Loading on Buildings B, C & part of D and Ground Level Loading on all Suites
- ◆ Upgraded Power (200 – 1,600 Amps)
- ◆ Upgraded Offices
- ◆ 21' to 27' Warehouse Clear Height
- ◆ ESFR Fire Sprinkler System



ALISA A. LOVAS-HOPSITER
951.445.4524
alovas@lee-associates.com
DRE #01200336

 **LEE &
ASSOCIATES**
COMMERCIAL REAL ESTATE SERVICES

25240 Hancock Avenue, Suite 100 | Murrieta, CA 92562
www.lee-associates.com | DRE# 01048055

No warranty or representation has been made to the accuracy of the foregoing information. Terms of sale or lease and availability are subject to change or withdrawal without notice. Lee & Associates Commercial Real Estate Services, Inc. - Riverside. 25240 Hancock Avenue, Suite 100 - Murrieta, CA 92562 | DRE# 01048055

INTERSTATE BUSINESS PARK

INDUSTRIAL / SHOWROOM

±4,478 SF FOR LEASE

24335 PRIELIPP RD, 123 & 124 - WILDOMAR, CA

24335 PRIELIPP ROAD - BUILDING A

SUITE	BLDG	SQ. FT.	POWER	GRADE LEVEL LOADING	W/H CLEAR HEIGHT	BUILD-OUT	\$/SF/MONTH (NNN*)
123 & 124	A	4,478	400 Amps, 120/208 Volt	2 (12'x14')	27'	Reception, two private offices	\$0.85

24305 PRIELIPP ROAD - BUILDING B

SUITE	BLDG	SQ. FT.	POWER	GRADE LEVEL LOADING	DOCK HIGH LOADING	W/H CLEAR HEIGHT	BUILD-OUT	\$/SF/MONTH (NNN*)
100% Leased								

36595 KEVIN ROAD - BUILDING C

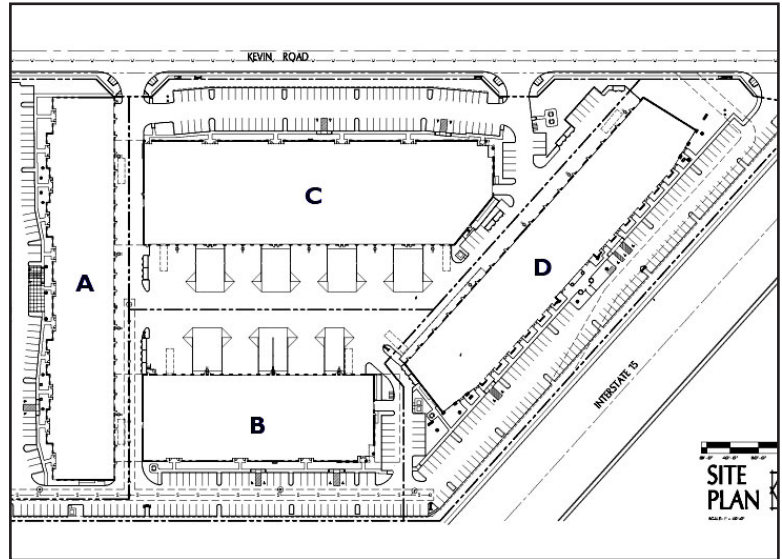
SUITE	BLDG	SQ. FT.	POWER	GRADE LEVEL LOADING	DOCK HIGH LOADING	W/H CLEAR HEIGHT	BUILD-OUT	\$/SF/MONTH (NNN*)
100% Leased								

36625 KEVIN ROAD - BUILDING D

SUITE	BLDG	SQ. FT.	POWER	GRADE LEVEL LOADING	DOCK HIGH LOADING	W/H CLEAR HEIGHT	BUILD-OUT	\$/SF/MONTH (NNN*)
100% Leased								

*Please note that there is a dock high loading platform at the northwest corner of the rear of Bldg. D which could serve the entire bldg.

Rev. 02/12/2020



ALISA A. LOVAS-HOPSITER
 951.445.4524
 alovas@lee-associates.com
 DRE #01200336



25240 Hancock Avenue, Suite 100 | Murrieta, CA 92562
 www.lee-associates.com | DRE# 01048055

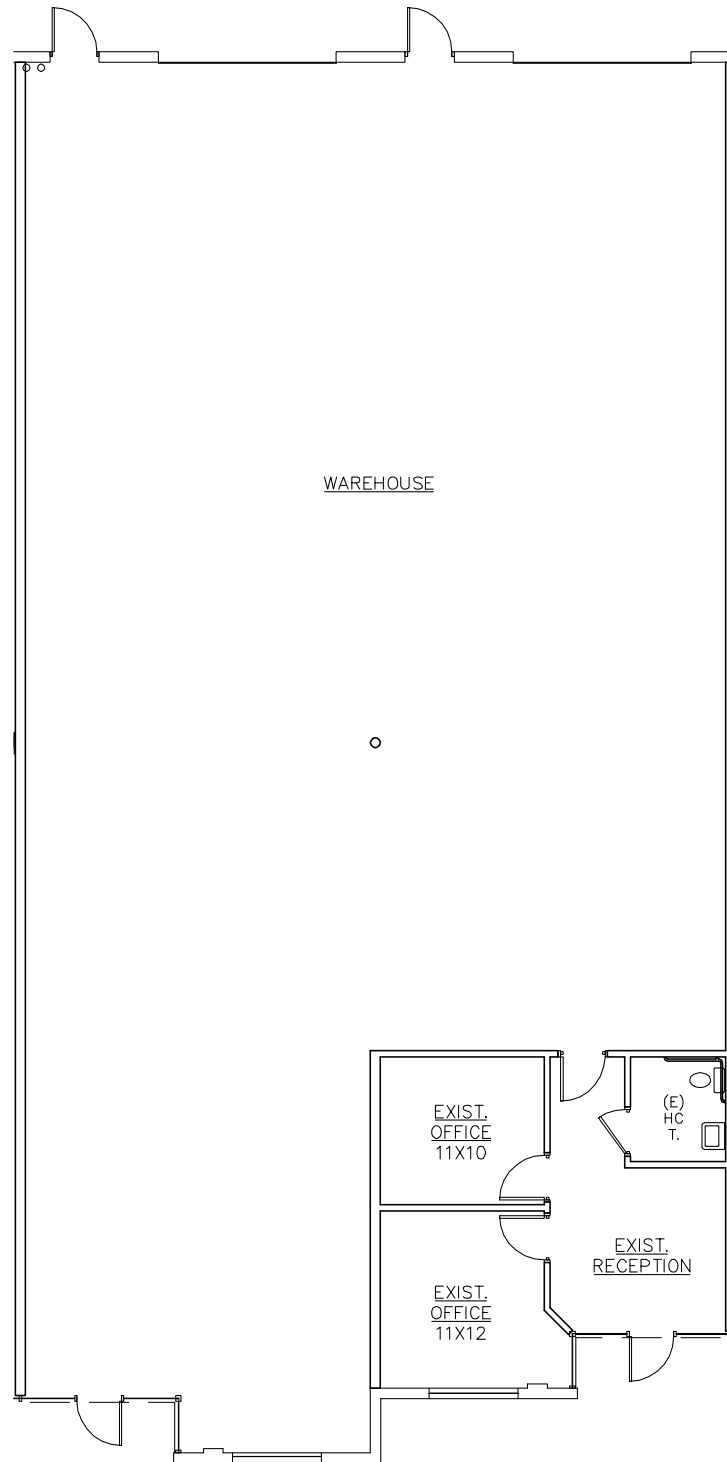
No warranty or representation has been made to the accuracy of the foregoing information. Terms of sale or lease and availability are subject to change or withdrawal without notice. Lee & Associates Commercial Real Estate Services, Inc. - Riverside. 25240 Hancock Avenue, Suite 100 - Murrieta, CA 92562 | DRE# 01048055

INTERSTATE BUSINESS PARK

INDUSTRIAL / SHOWROOM

±4,478 SF FOR LEASE

24335 PRIELIPP RD, 123 & 124 - WILDOMAR, CA



ALISA A. LOVAS-HOPSITER
951.445.4524
alovas@lee-associates.com
DRE #01200336

 **LEE &
ASSOCIATES**
COMMERCIAL REAL ESTATE SERVICES

25240 Hancock Avenue, Suite 100 | Murrieta, CA 92562
www.lee-associates.com | DRE# 01048055

No warranty or representation has been made to the accuracy of the foregoing information. Terms of sale or lease and availability are subject to change or withdrawal without notice. Lee & Associates Commercial Real Estate Services, Inc. - Riverside, 25240 Hancock Avenue, Suite 100 - Murrieta, CA 92562 | DRE# 01048055