



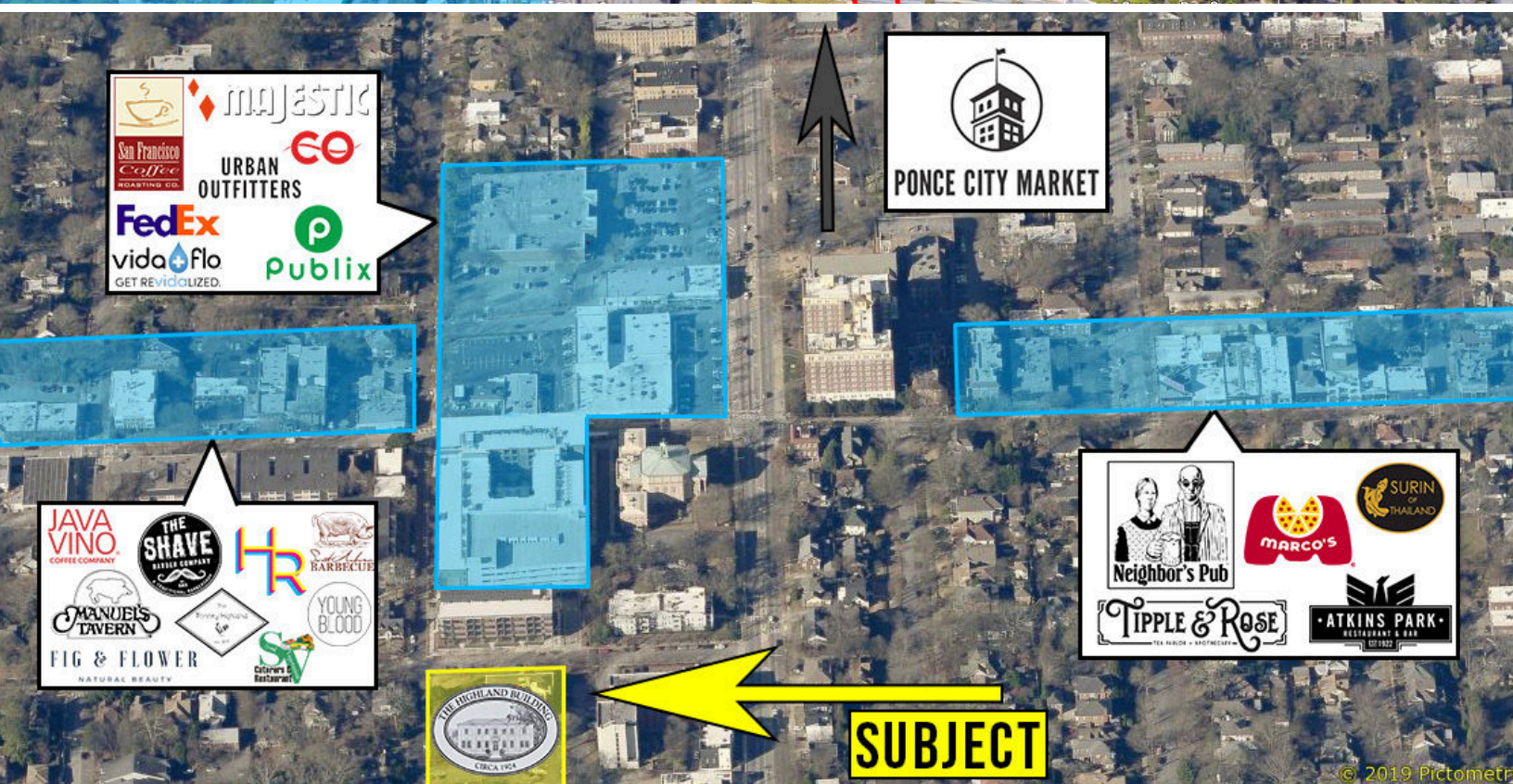
675 SEMINOLE AVE NE, SUITE B1 3,147 SF OFFICE SPACE FOR SALE: \$624,900

- ▶ Historic charm combined with a full, recent renovation
- ▶ Offered *turn-key* with professionally designed furnishings
- ▶ Located in the heart of Poncey-Highlands neighborhood
- ▶ Competitive price at \$198.57/SF
- ▶ *Hyper-walkable* with BeltLine connectivity
- ▶ 89 Walk Score



Charlie Carroll | charlie@stratuspg.com | 404-618-0720

675 SEMINOLE AVE NE, SUITE B1 FOR SALE: \$699,000



Charlie Carroll | charlie@stratuspg.com | 404-618-0720



675 SEMINOLE AVE NE, SUITE B1
FOR SALE: \$699,000



Charlie Carroll | charlie@stratuspg.com | 404-618-0720



675 SEMINOLE AVE NE, SUITE B1
FOR SALE: \$699,000



Charlie Carroll | charlie@stratuspg.com | 404-618-0720



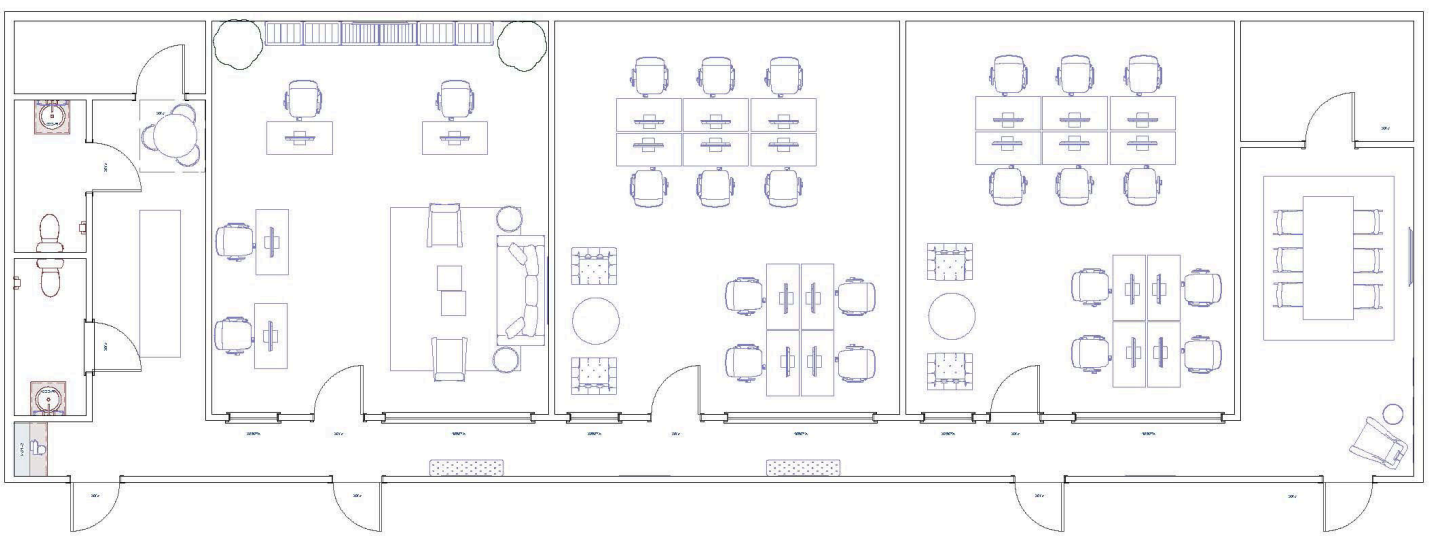
675 SEMINOLE AVE NE, SUITE B1
FOR SALE: \$699,000



Charlie Carroll | charlie@stratuspg.com | 404-618-0720



675 SEMINOLE AVE NE, SUITE B1
FOR SALE: \$699,000



**PROFESSIONALLY DESIGNED
POTENTIAL FLOOR PLAN**



Charlie Carroll | charlie@stratuspg.com | 404-618-0720

