

HIGHWAY 67 & I-65 INTERSECTION

DECATUR, AL 35601



Parker
Real Estate, Inc.

\$250,000.00 PER SURVEYED ACRE AS TRACT

- Land: 44 acres +/-
- Zoning: B-2-General Business; 22.34 acres +/- Decatur
C-3-Commercial; 22 acres +/- Priceville
- Intersection with I-65 (Exit 344 S) is located approximately one block west from Highway 67 entry to site
- Site offers high visibility and excellent ingress / egress
- 2,500 ft. +/- of interstate frontage
- 2011 Alabama Traffic Count: North—34,700 daily South—35,740 daily

JEFF PARKER / Qualifying Broker
PARKER REAL ESTATE

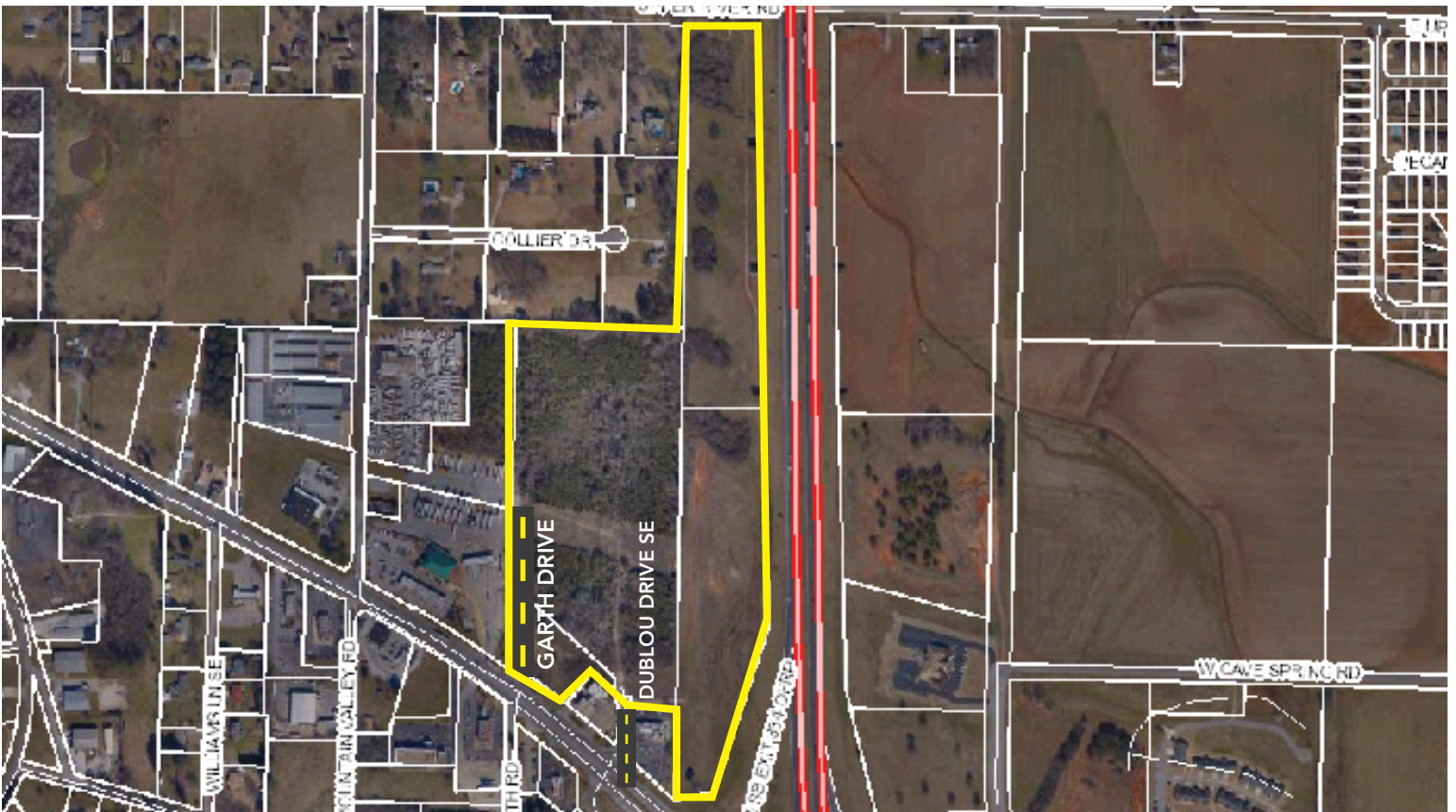
401 Grant St. SE / Decatur, AL 35601
c: 256.227.7935 w: 256.353.1112 // jparker@parker-realestate.com

HIGHWAY 67 & I-65 INTERSECTION

DECATUR, AL 35601

Parker
Real Estate

Excellent ingress / egress
with existing access from
Garth Road and Dublou Drive SE



JEFF PARKER / Qualifying Broker
PARKER REAL ESTATE

401 Grant St. SE / Decatur, AL 35601
c: 256.227.7935 w: 256.353.1112 // jparker@parker-realestate.com

HIGHWAY 67 & I-65 INTERSECTION

DECATUR, AL 35601



Located on major thoroughfare with restaurants and a major grocery chain

JEFF PARKER / Qualifying Broker
PARKER REAL ESTATE

401 Grant St. SE / Decatur, AL 35601
c: 256.227.7935 w: 256.353.1112 // jparker@parker-realestate.com