



# Vision Drive

15635 Vision Dr., Pflugerville, TX 78660

**1,900 - 2,000 SF RETAIL/OFFICE - FOR LEASE**





## HIGHLIGHTS

- 1,900 - 2,000 SF Available
- Convenient Flex Office and Service Center Building!
- Easy access to IH-35
- Perfect for office space, commissary kitchen, sales office, call center, retail, or medical use!
- Traffic count of 22,169 vehicles per day on FM 1825

## AREA RETAILERS



**For more information please contact:**

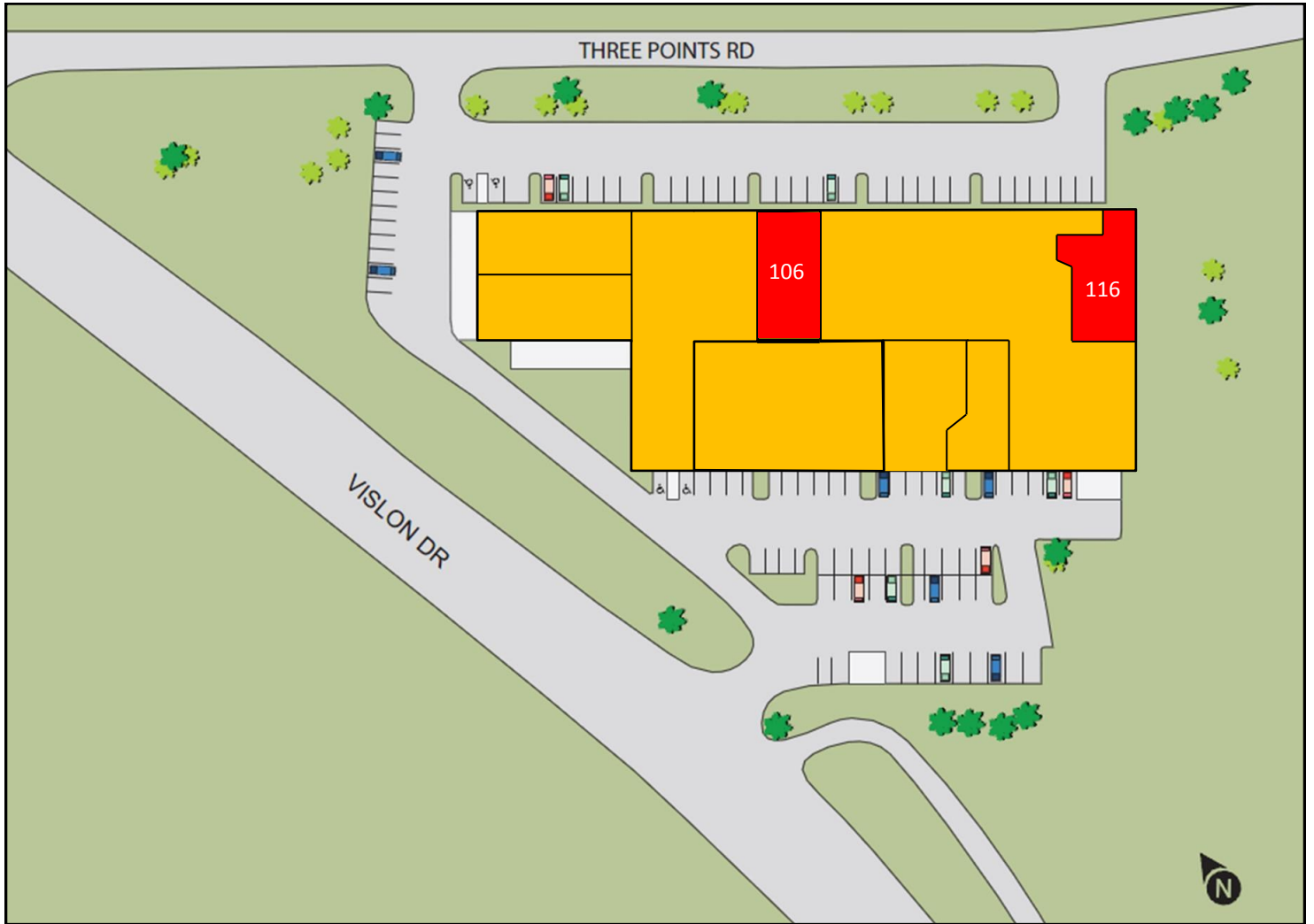
**Nick Tarantino, CCIM** [nick@tarantino.com](mailto:nick@tarantino.com)

**Chad Folts** [cfolts@tarantino.com](mailto:cfolts@tarantino.com)

502 East 11th St., Suite 400 Austin, Texas 78701

Tel (512) 302-4500, Fax (512) 302-4109

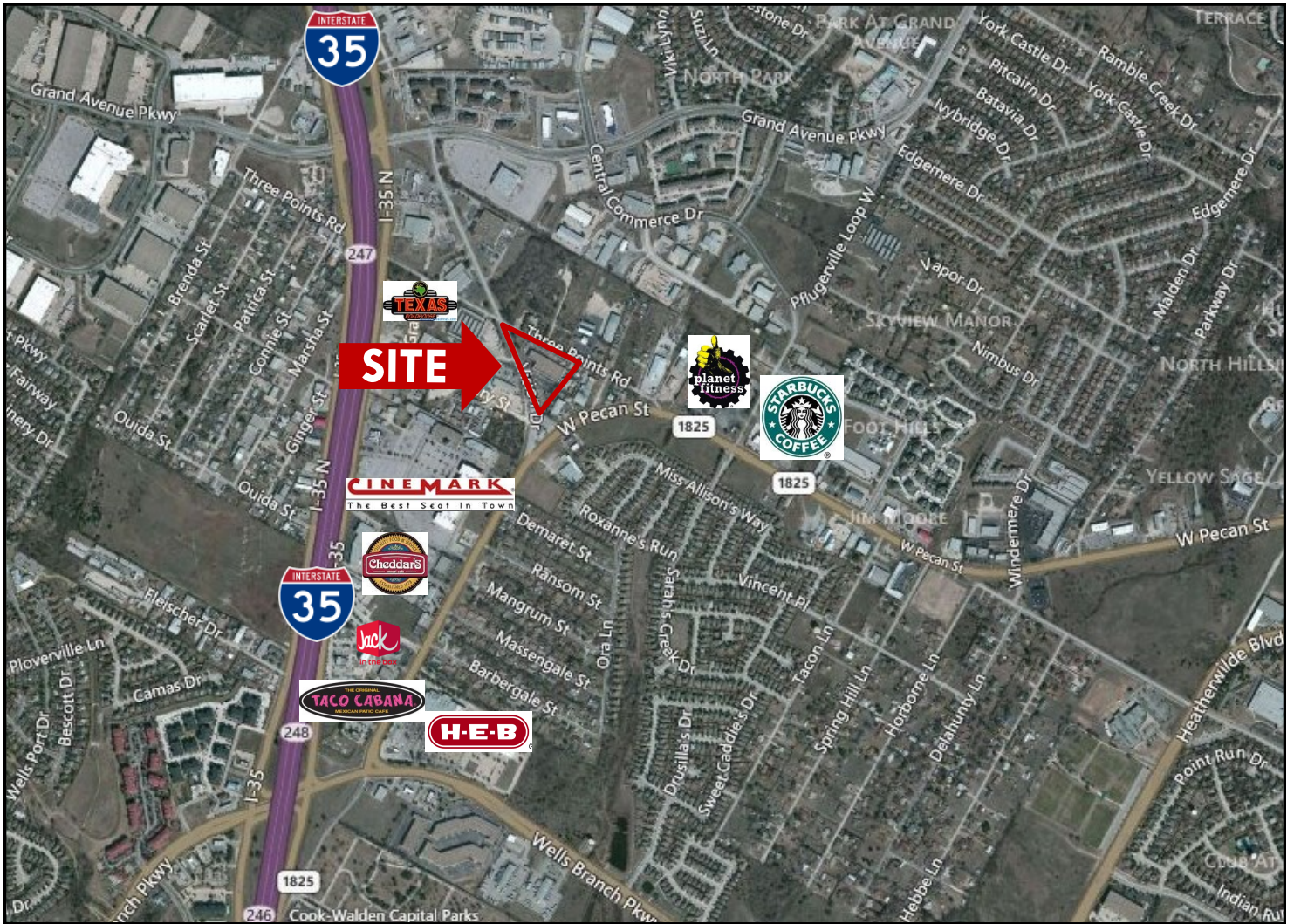
[www.tarantino.com](http://www.tarantino.com)



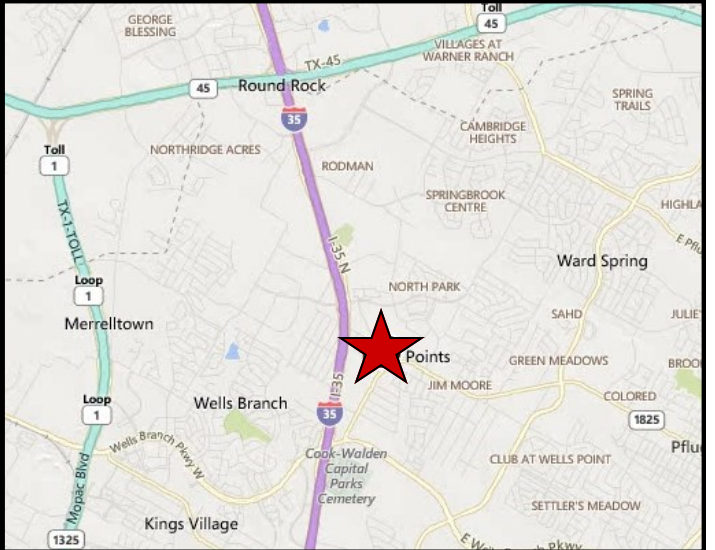
## AVAILABILITY

|          |          |
|----------|----------|
| UNIT 106 | 2,042 SF |
| UNIT 116 | 1,884 SF |





| <b>DEMOGRAPHICS (2016)</b> |          |          |          |
|----------------------------|----------|----------|----------|
| <b>MILE(S)</b>             | <b>1</b> | <b>3</b> | <b>5</b> |
| <b>Total Population</b>    | 10,248   | 101,510  | 233,931  |
| <b>Total Households</b>    | 4,021    | 39,605   | 91,763   |
| <b>Median HH Income</b>    | \$56,835 | \$62,610 | \$64,846 |



**For more information please contact:**  
**Nick Tarantino, CCIM** [nick@tarantino.com](mailto:nick@tarantino.com)  
**Chad Folts** [cfolts@tarantino.com](mailto:cfolts@tarantino.com)

502 East 11th St., Suite 400 Austin, Texas 78701  
 Tel (512) 302-4500, Fax (512) 302-4109  
[www.tarantino.com](http://www.tarantino.com)