

# Parkway Springs Plaza

SWC Warm Springs Rd & Green Valley Pkwy  
Henderson, NV 89014



## ANCHOR & JR ANCHOR AVAILABLE

Anchor: 15,955 - 42,630 SF  
Shops: 1,600 - 6,000 SF  
Pad Space: 1,184 - 5,107 SF

- Excellent visibility
- Strong tenant mix
- Serving the Green Valley Master Planned Community
- APN: 178-07-511-001 to 002
- Zoning: Community Commercial (CC)



	1 mi	3 mi	5 mi
POPULATION	21,909	141,892	391,580
HOUSEHOLDS	9,088	58,428	160,482
AVG HOUSEHOLD INCOME	\$97,143	\$87,493	\$79,139

Source: SitesUSA 2019



Warm Springs Rd - 24,900 VPD  
Green Valley Pkwy - 22,600 VPD

Source: NV DOT 2018

### SHOPPING CENTER RETAILERS



### LEASING CONTACT

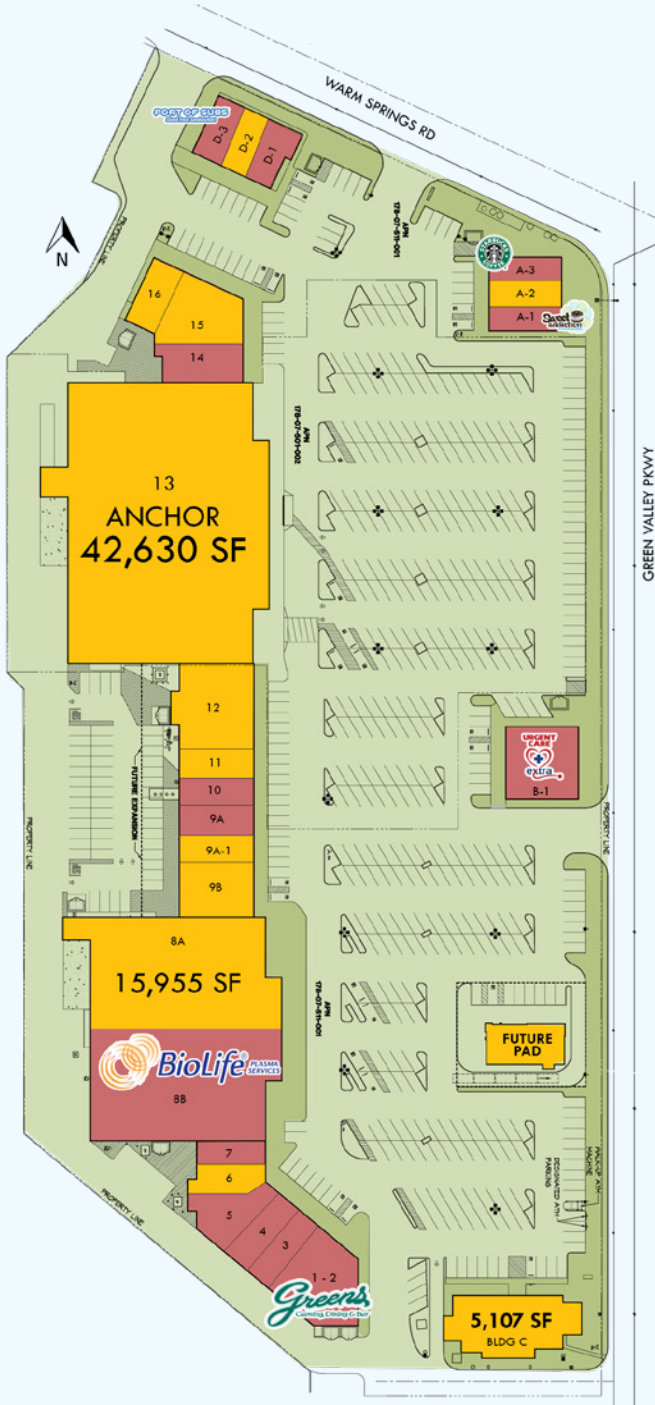
Jennifer F Ott, CCIM | 702.550.4935 | jott@roicre.com  
Angelica M Lopez | 702.550.4937 | angelica@roicre.com  
Brian Sorrentino, CCIM | 702.550.4932 | brian@roicre.com  
Isabella J Sorrentino | 702.550.4294 | isabella@roicre.com

9121 W Russell Rd Suite 111  
Las Vegas, NV 89148  
(P) 702.363.3100 (F) 702.363.0450  
roicre.com

All information contained herein is from sources we deem reliable, and we have no reason to doubt its accuracy; however, no guarantee or responsibility is assumed thereof, and it shall not form any part of future contracts. Properties are submitted subject to errors and omissions and all information should be carefully verified. \*All measurements quoted herein are approximate

# Parkway Springs Plaza

SWC Warm Springs Rd & Green Valley Pkwy  
Henderson, NV 89014



Suite	Tenant	Size (SF)
1-2	The Greens Gaming & Dining	5,744
3	Pharmacy	1,225
4	Best Nails	1,225
5	Smoke Shop	1,747
<b>6</b>	<b>AVAILABLE</b>	<b>1,630</b>
7	State Farm Insurance	1,200
<b>8A</b>	<b>AVAILABLE</b>	<b>15,955</b>
8B	Biolife Plasma Services	15,954
<b>9B</b>	<b>AVAILABLE</b>	<b>4,800</b>
<b>9A-1</b>	<b>AVAILABLE</b>	<b>1,600</b>
9A	One Love Pet Salon	1,545
10	China Garden	1,840
<b>11</b>	<b>AVAILABLE</b>	<b>1,840</b>
<b>12</b>	<b>AVAILABLE</b>	<b>6,000</b>
<b>13</b>	<b>AVAILABLE</b>	<b>42,630</b>
14	Nevada Chiropractic	1,328
<b>15</b>	<b>AVAILABLE</b>	<b>4,100</b>
<b>16</b>	<b>AVAILABLE</b>	<b>2,130</b>
A-1	Sweet Addiction Ice Cream	1,249
<b>A-2</b>	<b>AVAILABLE</b>	<b>1,184</b>
A-3	Starbucks	1,535
B-1	Urgent Extra Care	4,000
<b>C-1</b>	<b>AVAILABLE</b>	<b>5,107</b>
D-1	Nevada Sun Dental	1,364
<b>D-2</b>	<b>AVAILABLE</b>	<b>1,365</b>
D-3	Port of Subs	1,364
	<b>FUTURE PAD</b>	<b>0.5 AC</b>

## LEASING CONTACT

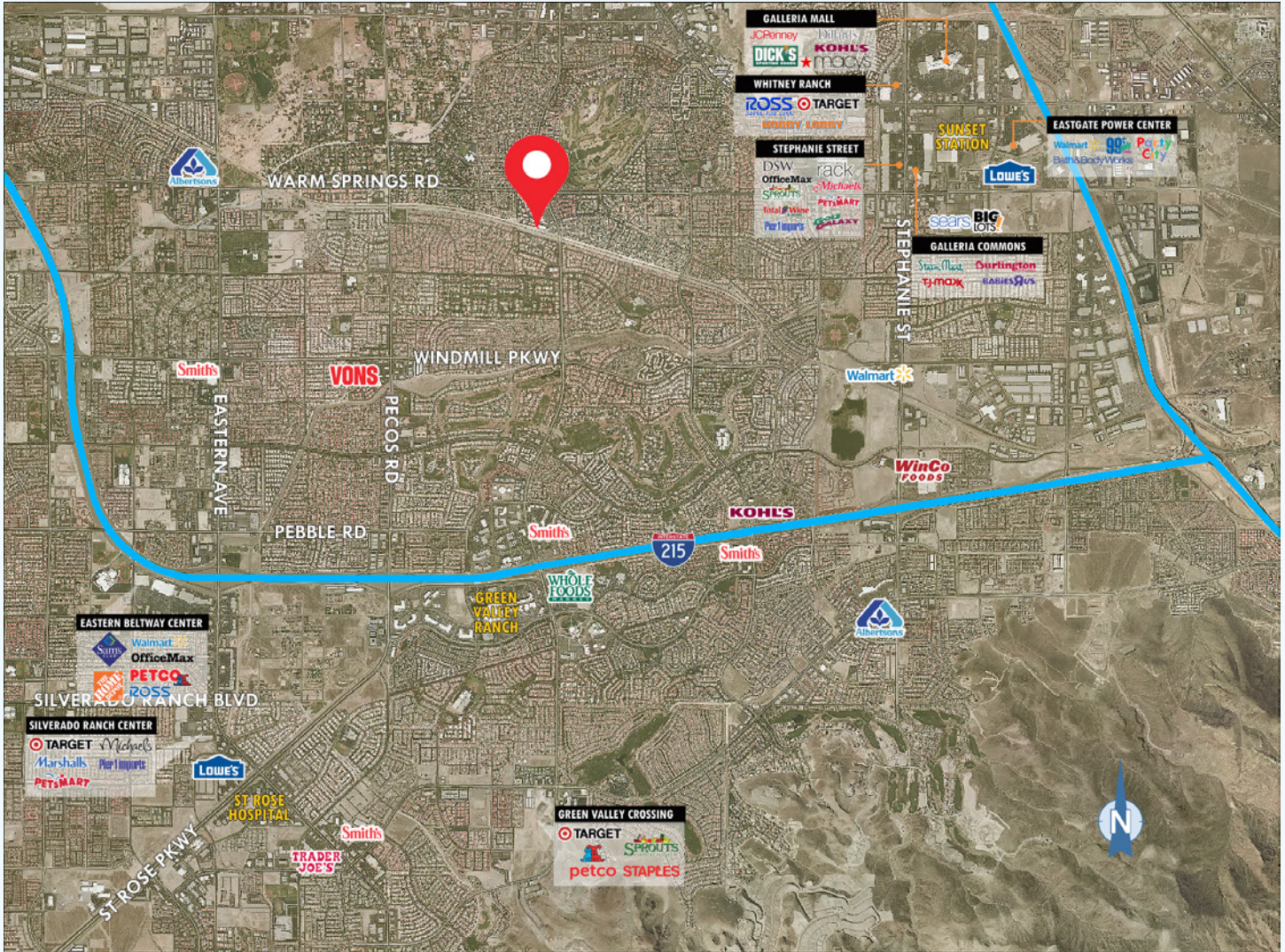
Jennifer F Ott, CCIM | 702.550.4935 | jott@roicre.com  
 Angelica M Lopez | 702.550.4937 | angelica@roicre.com  
 Brian Sorrentino, CCIM | 702.550.4932 | brian@roicre.com  
 Isabella J Sorrentino | 702.550.4294 | isabella@roicre.com

9121 W Russell Rd Suite 111  
 Las Vegas, NV 89148  
 (P) 702.363.3100 (F) 702.363.0450  
 roicre.com

All information contained herein is from sources we deem reliable, and we have no reason to doubt its accuracy; however, no guarantee or responsibility is assumed thereof, and it shall not form any part of future contracts. Properties are submitted subject to errors and omissions and all information should be carefully verified. \*All measurements quoted herein are approximate

# Parkway Springs Plaza

SWC Warm Springs Rd & Green Valley Pkwy  
Henderson, NV 89014



## LEASING CONTACT

**Jennifer F Ott, CCIM** | 702.550.4935 | [jfott@roicre.com](mailto:jfott@roicre.com)  
**Angelica M Lopez** | 702.550.4937 | [angelica@roicre.com](mailto:angelica@roicre.com)  
**Brian Sorrentino, CCIM** | 702.550.4932 | [brian@roicre.com](mailto:brian@roicre.com)  
**Isabella J Sorrentino** | 702.550.4294 | [isabella@roicre.com](mailto:isabella@roicre.com)

9121 W Russell Rd Suite 111  
 Las Vegas, NV 89148  
 (P) 702.363.3100 (F) 702.363.0450  
[roicre.com](http://roicre.com)

All information contained herein is from sources we deem reliable, and we have no reason to doubt its accuracy; however, no guarantee or responsibility is assumed thereof, and it shall not form any part of future contracts. Properties are submitted subject to errors and omissions and all information should be carefully verified. \*All measurements quoted herein are approximate