

704 E. MAIN STREET
MOORE, OK 73160

Auto Repair Shop For Sale

4,470 RSF on 0.69 Acres MOL

REDUCED Sales Price: \$599,500 (\$134.12/SF)



NAIRED

COMMERCIAL
REAL ESTATE

NAIRED

405.840.0600

NAIRED.COM

MATTHEW PIERCE

405.203.3636

MATT@NAIRED.COM

CADE FLESNER

760.889.2305

CADE@NAIRED.COM



PROPERTY HIGHLIGHTS

- (3) 10' Overhead Doors
- Frontage on E. Main Street
- 2 Restrooms (1 Shop)
- 12' Ceiling Height
- Showroom
- Built: 1984
- Zoned: C-5

LOCATION HIGHLIGHTS

- Excellent Street Visibility & Frontage on E. Main Street
- Close Proximity to Moore High School
- Own Adjacent Parking Lot

NAIRED

405.840.0600

NAIRED.COM

MATTHEW PIERCE

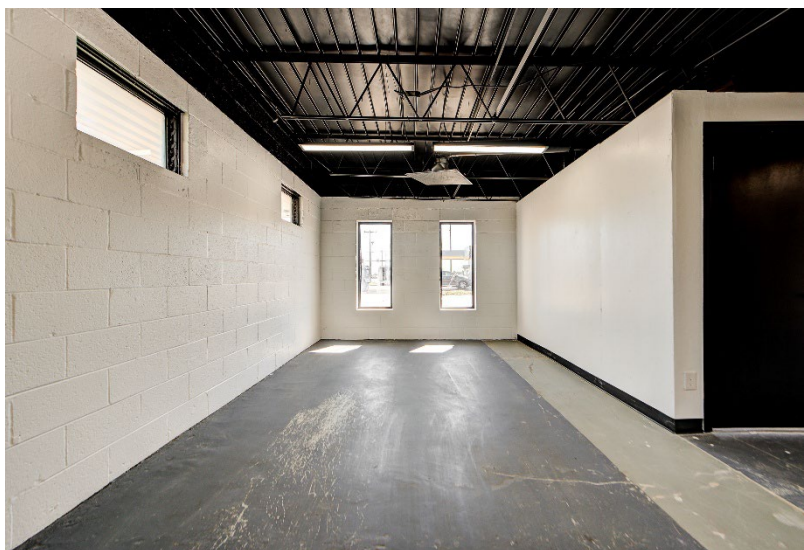
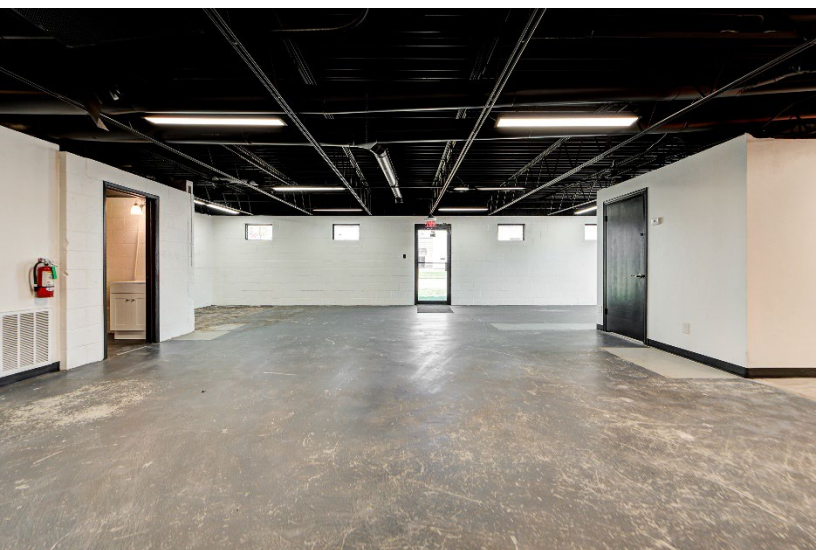
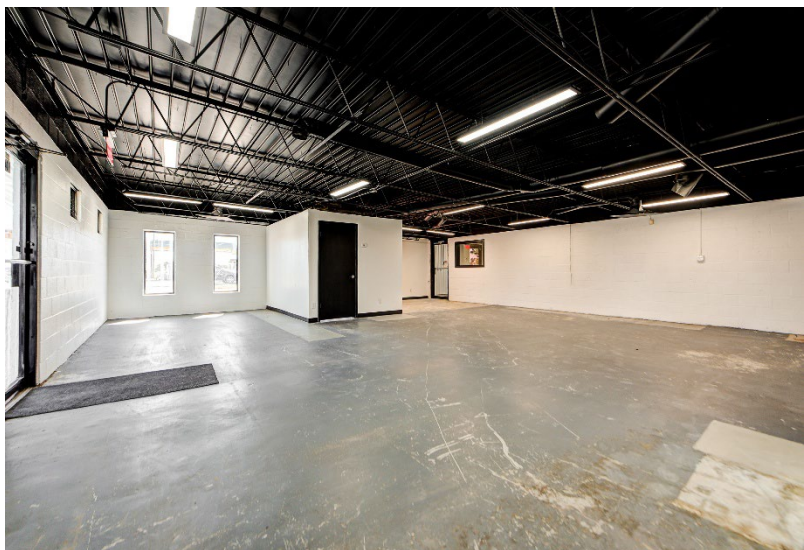
405.203.3636

MATT@NAIRED.COM

CADE FLESNER

760.889.2305

CADE@NAIRED.COM



NAIRED

405.840.0600

NAIRED.COM

MATTHEW PIERCE

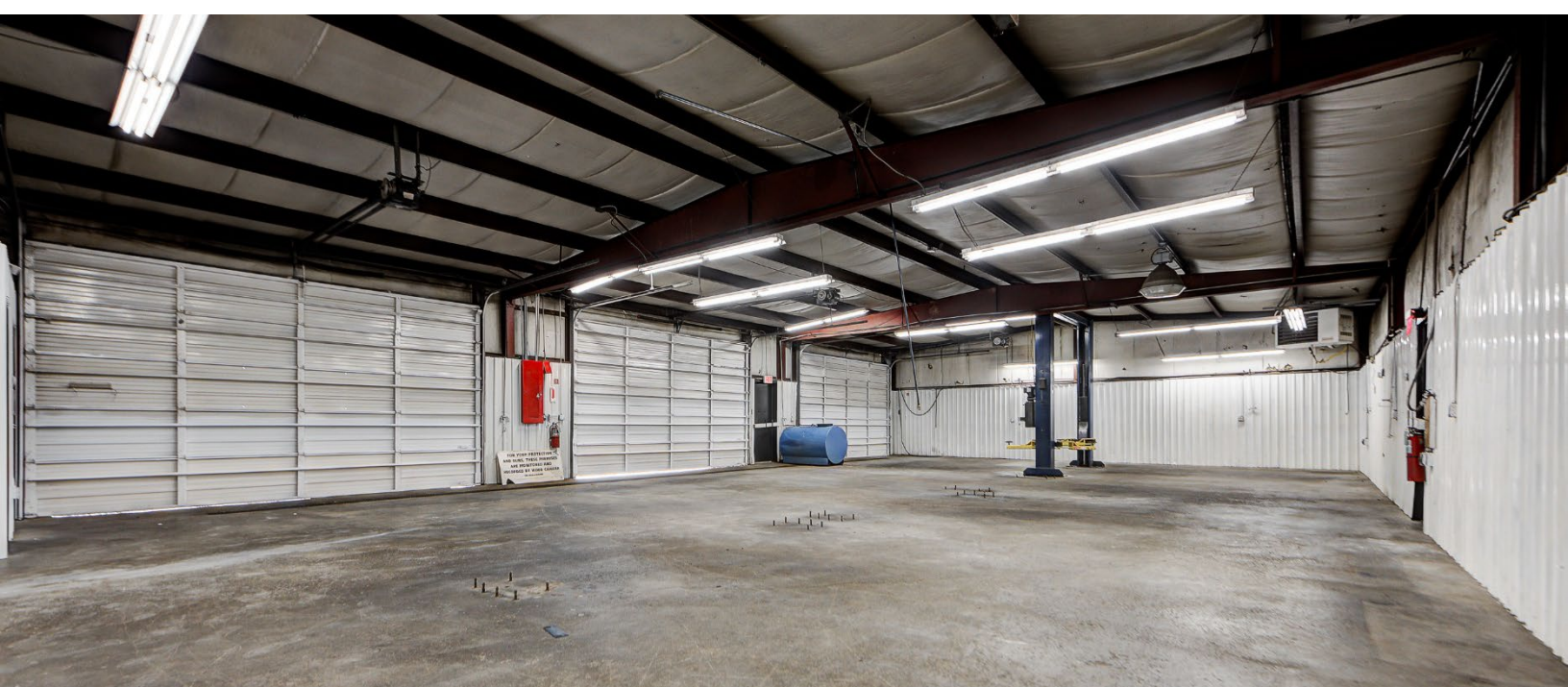
405.203.3636

MATT@NAIRED.COM

CADE FLESNER

760.889.2305

CADE@NAIRED.COM



NAIRED

405.840.0600

NAIRED.COM

MATTHEW PIERCE

405.203.3636

MATT@NAIRED.COM

CADE FLESNER

760.889.2305

CADE@NAIRED.COM



MAIN STREET TRAFFIC COUNT: 1,624 CPD

TOBY KEITH AVENUE TRAFFIC COUNT: 17,425 CPD

SE 4TH STREET TRAFFIC COUNT: 15,414 CPD

DEMOGRAPHICS

	1 MILE	3 MILE	5 MILE
POPULATION	12,219	73,827	138,367
AVERAGE HOUSEHOLD INCOME	\$80,237	\$79,445	\$83,122
TOTAL HOUSEHOLDS	4,664	28,198	52,968

NAIRED

405.840.0600
NAIRED.COM

FOLLOW US @NAIRED_CRE



No warranty or representation, express or implied, is made as to the accuracy of the information contained herein, and the same is submitted subject to errors, omissions, change of price, rental or other conditions, prior to sale, lease, or financing, or withdrawal without notice, and of any special listing conditions imposed by our principals no warranties or representations are made as to the condition of the property or any hazards contained therein are any to be implied.