



W. American Drive/Irish Road Village of Fox Crossing, WI

Property Features

- Prime commercial/multi-family development site located in Village of Fox Crossing. High visibility from W. American Drive and US Highway 10.
- Possible uses include multi-family, residential and commercial development.
- Site serviced with electric, gas, water and sewer (as per utility map on page 2).
- Established storm water retention pond in place to service property.

PRICE **\$3,950,000**

TOTAL PARCEL SIZE APPROXIMATELY 57.64 ACRES

PARCEL ID 1210218, 121021702, 121020604

CURRENT ZONING A-2 GENERAL AGRICULTURE; MIXED USE DISTRICT

MUNICIPALITY VILLAGE OF FOX CROSSING

For more information:

Jonathan Glassco

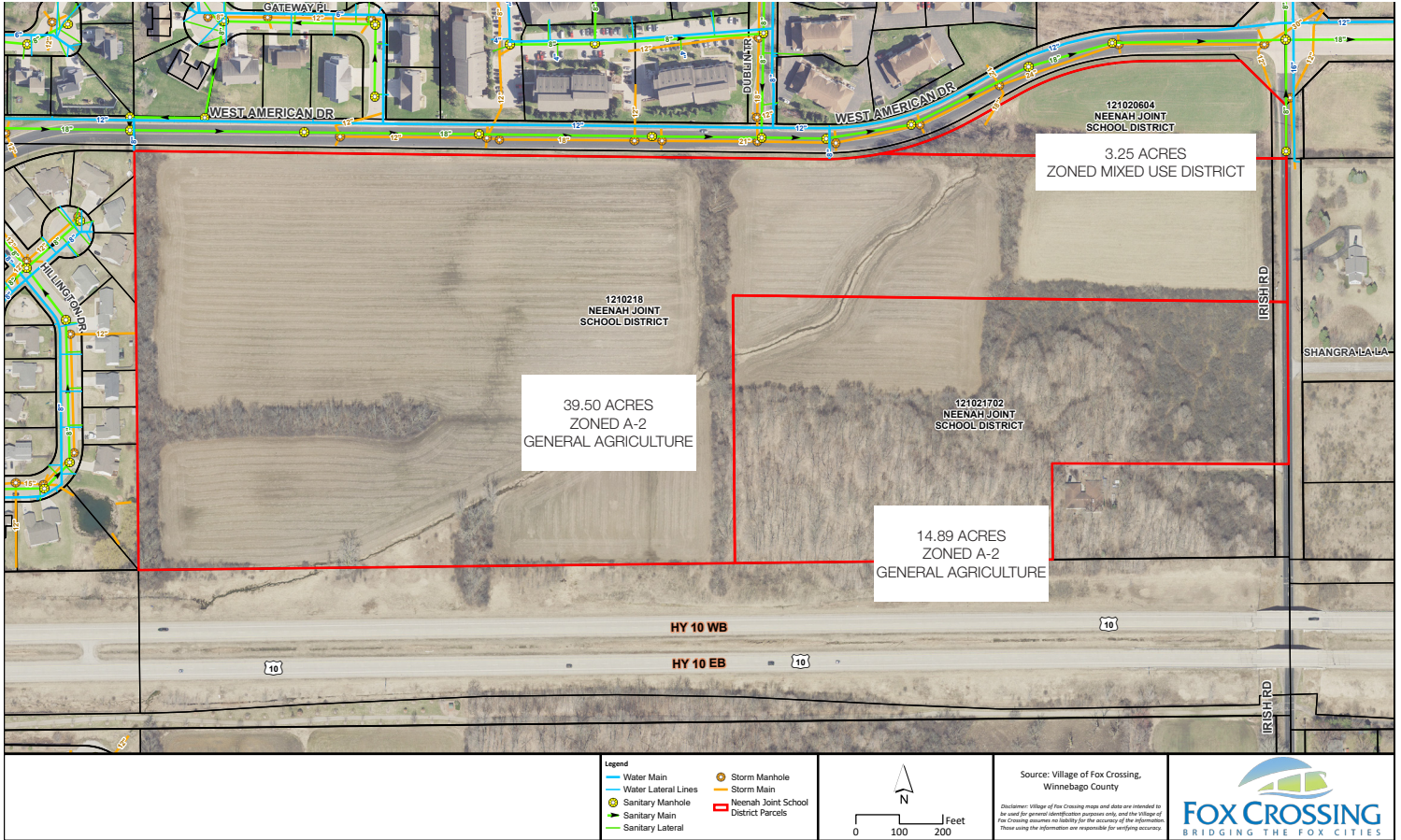
920.560.5078 • jonathang@naipfefferle.com

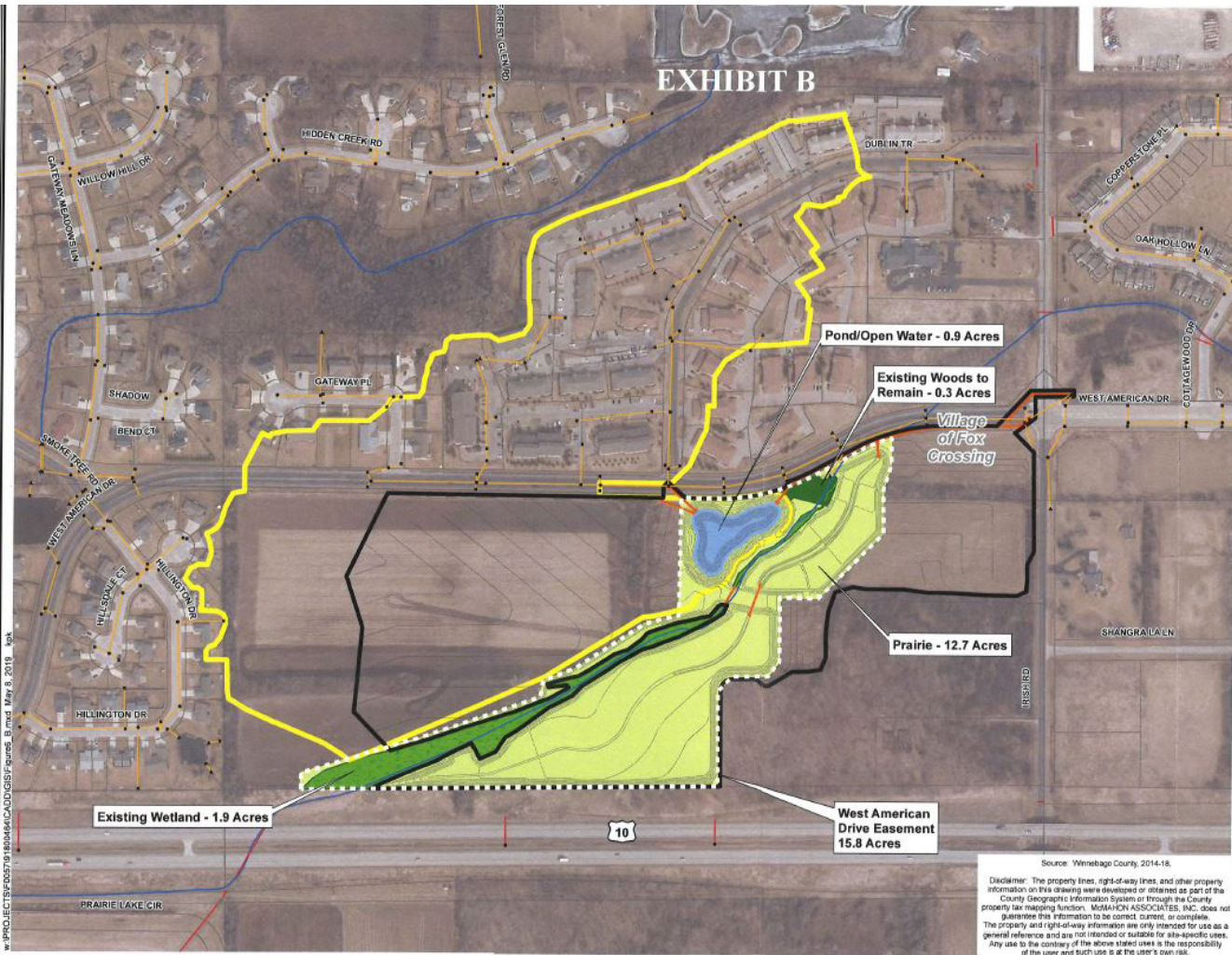
John Roberts, SIOR

920.216.2554 • johnr@naipfefferle.com

NO WARRANTY OR REPRESENTATION, EXPRESS OR IMPLIED, IS MADE AS TO THE ACCURACY OF THE INFORMATION CONTAINED HEREIN, AND THE SAME IS SUBMITTED SUBJECT TO ERRORS, OMISSIONS, CHANGE OF PRICE, RENTAL OR OTHER CONDITIONS, PRIOR SALE, LEASE OR FINANCING, OR WITHDRAWAL WITHOUT NOTICE, AND OF ANY SPECIAL LISTING CONDITIONS IMPOSED BY OUR PRINCIPALS NO WARRANTIES OR REPRESENTATIONS ARE MADE AS TO THE CONDITION OF THE PROPERTY OR ANY HAZARDS CONTAINED THEREIN ARE ANY TO BE IMPLIED.

200 E. Washington Street, Suite 2A
Appleton, WI
920.968.4700
naipfefferle.com





- Proposed Features**
- Easement
 - Limits of Disturbance Boundary
 - Storm Sewer
 - Pond Watershed Boundary
 - Contour
 - Prairie
 - Pond/Open Water
- Existing Storm System**
- Manhole
 - Inlet
 - Discharge Point
 - Culvert
 - Gravity Main
- Other Mapped Features**
- Municipal Boundary
 - Parcel Line
 - Stream
 - Existing Wetland
 - Existing Woods to Remain



McMAHON
ENGINEERS ARCHITECTS
McMAHON ASSOCIATES, INC.

FIGURE 6
PROPOSED CONCEPT
AMERICAN DRIVE
STREAM CORRIDOR
FLOODPLAIN ANALYSIS
VILLAGE OF FOX CROSSING
WINNEBAGO COUNTY, WISCONSIN

Source: Winnebago County, 2014-18.
Disclaimer: The property lines, right-of-way lines, and other property information on this drawing were developed or obtained as part of the County Geographic Information System or through the County property tax mapping function. McMAHON ASSOCIATES, INC. does not guarantee this information to be correct, current, or complete. The property and right-of-way information are only intended for use as a general reference and are not intended or suitable for site-specific uses. Any use to the contrary of the above stated uses is the responsibility of the user and such use is at the user's own risk.



Demographics (5, 10 & 15 Mile Radius)

POPULATION



5 MILE:	71,615
10 MILES:	214,296
15 MILES:	342,919



EMPLOYEES

5 MILE:	63,649
10 MILES:	122,247
15 MILES:	164,564

AVERAGE INCOME



5 MILE:	\$107,764
10 MILES:	\$118,176
15 MILES:	\$114,182



BUSINESSES

5 MILE:	3,101
10 MILES:	6,710
15 MILES:	9,714

AVERAGE HOUSEHOLDS

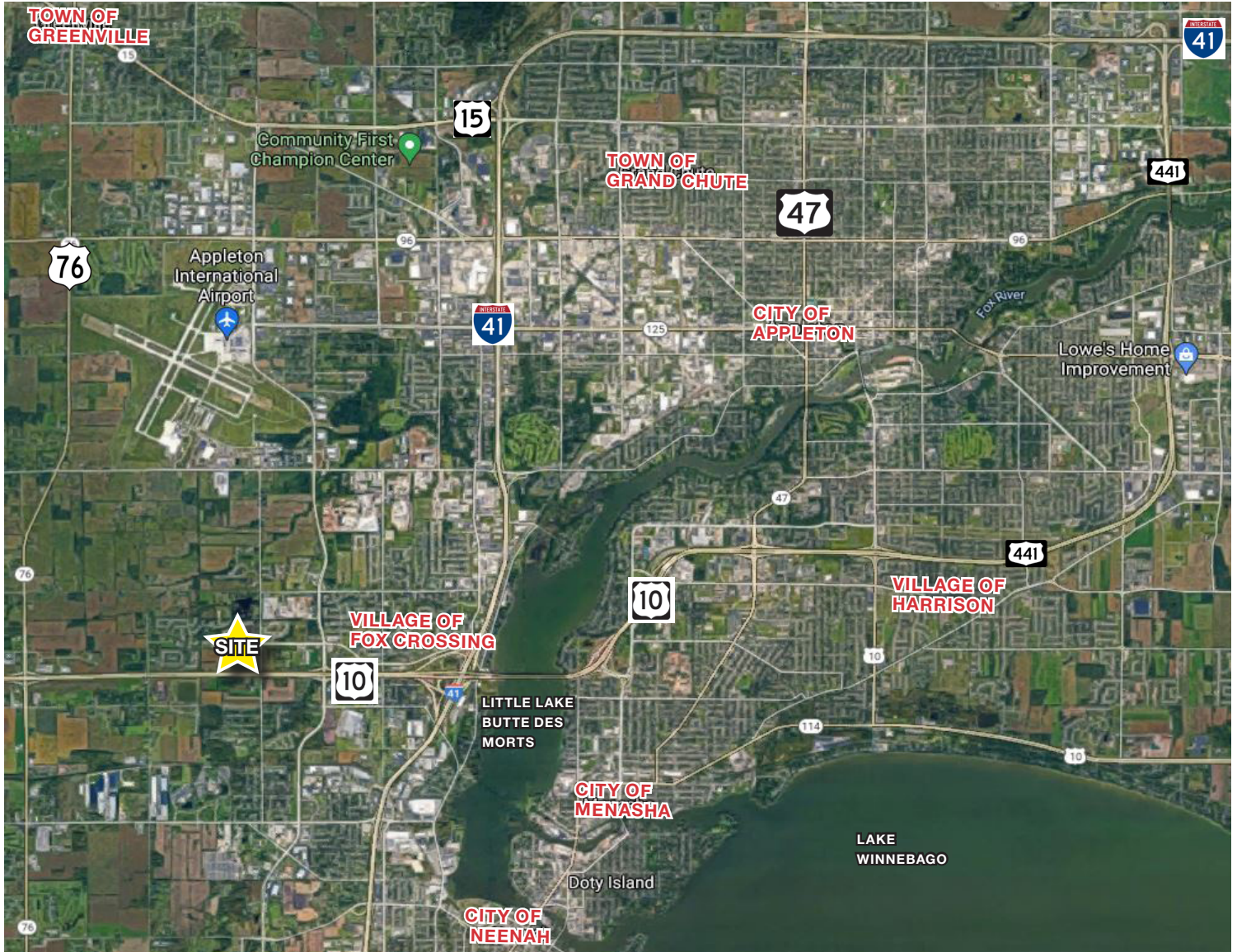


5 MILE:	31,290
10 MILES:	89,468
15 MILES:	141,539



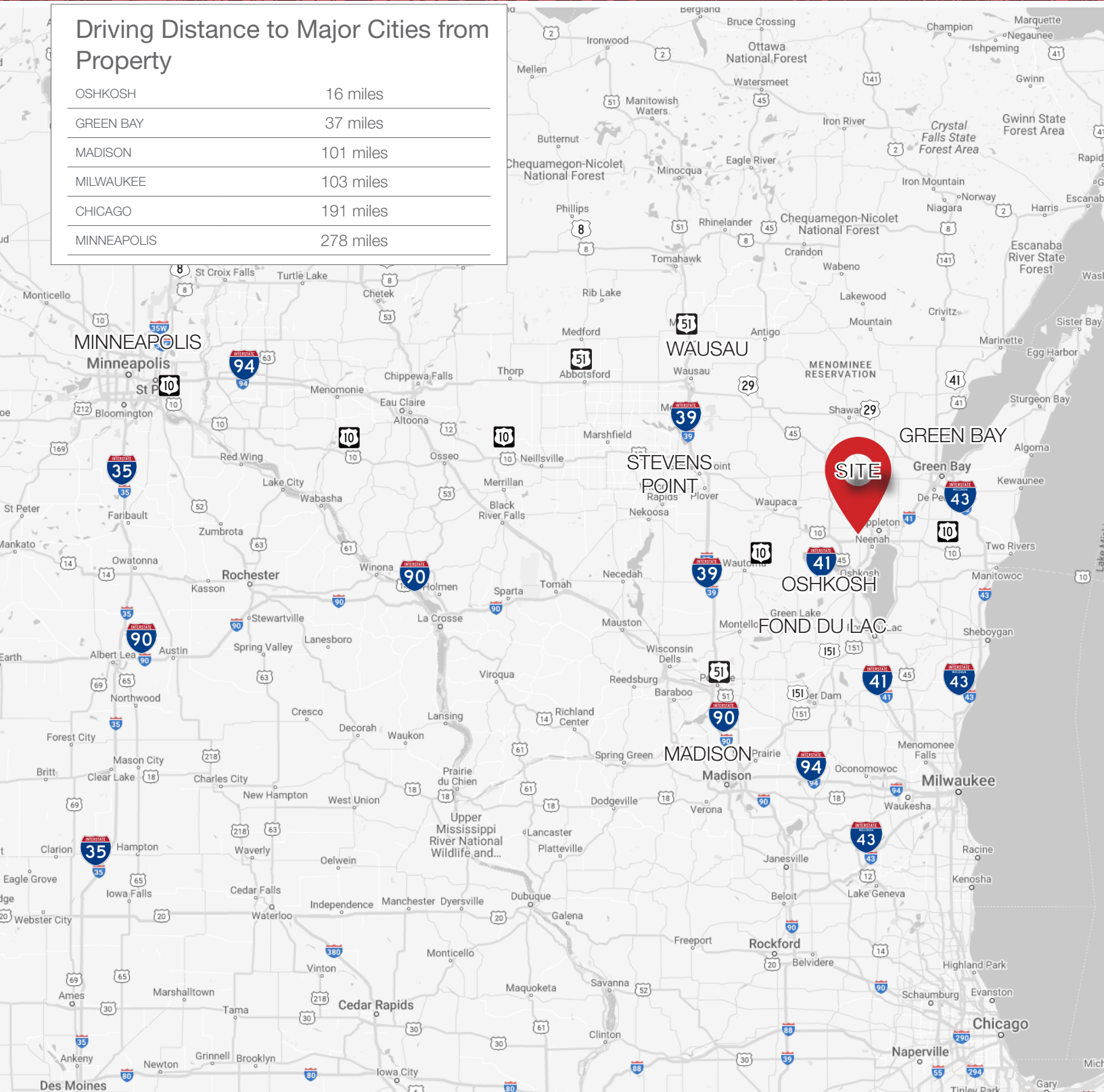
TRAFFIC COUNTS

HIGHWAY 10	20,500
AMERICAN DRIVE	4,900
IRISH ROAD	1,800



Driving Distance to Major Cities from Property

OSHKOSH	16 miles
GREEN BAY	37 miles
MADISON	101 miles
MILWAUKEE	103 miles
CHICAGO	191 miles
MINNEAPOLIS	278 miles



STATE OF WISCONSIN BROKER DISCLOSURE



Wisconsin law requires all real estate licensees to give the following information about brokerage services to prospective customers.

Prior to negotiating on your behalf the Brokerage firm, or an agent associated with the firm, must provide you the following disclosure statement.

Disclosure to Customers

You are a customer of NAI Pfefferle (hereinafter Firm). The Firm is either an agent of another party in the transaction or a subagent of another firm that is the agent of another party in the transaction. A broker or a salesperson acting on behalf of the Firm may provide brokerage services to you. Whenever the Firm is providing brokerage services to you, the Firm and its brokers and salespersons (hereinafter Agents) owe you, the customer, the following duties:

- The duty to provide brokerage services to you fairly and honestly.
- The duty to exercise reasonable skill and care in providing brokerage services to you.
- The duty to provide you with accurate information about market conditions within a reasonable time if you request it, unless disclosure of the information is prohibited by law.
- The duty to disclose to you in writing certain Material Adverse Facts about a Property, unless disclosure of the information is prohibited by law.
- The duty to protect your confidentiality. Unless the law requires it, the Firm and its Agents will not disclose your confidential information or the confidential information of other parties.
- The duty to safeguard trust funds and other property held by the Firm or its Agents.
- The duty, when negotiating, to present contract proposals in an objective and unbiased manner and disclose the advantages and disadvantages of the proposals.

Please review this information carefully. An Agent of the Firm can answer your questions about brokerage services, but if you need legal advice, tax advice, or a professional home inspection, contact an attorney, tax advisor, or home inspector. This disclosure is required by section 452.135 of the Wisconsin statutes and is for information only. It is a plain-language summary of the duties owed to a customer under section 452.133(1) of the Wisconsin statutes.

Confidentiality Notice to Customers

The Firm and its Agents will keep confidential any information given to the Firm or its Agents in confidence, or any information obtained by the Firm or its Agents that a reasonable person would want to be kept confidential, unless the information must be disclosed by law or you authorize the Firm to disclose particular information. The Firm and its Agents shall continue to keep the information confidential after the Firm is no longer providing brokerage services to you.

No representation is made as to the legal validity of any provision or the adequacy of any provision in any specific transaction.

The following information is required to be disclosed by law:

1. Material Adverse Facts, as defined in section 452.01(5g) of the Wisconsin Statutes (see definition below).
2. Any facts known by the Firm or its Agents that contradict any information included in a written inspection report on the property or real estate that is the subject of the transaction.

To ensure that the Firm and its Agents are aware of what specific information you consider confidential, you may list that information below or provide that information to the Firm or its Agents by other means. At a later time, you may also provide the Firm or its Agents with other information you consider to be confidential.

CONFIDENTIAL INFORMATION

NON-CONFIDENTIAL INFORMATION

(the following information may be disclosed to the Firm and its Agents)

(Insert information you authorize to be disclosed, such as financial qualification information.)

Definition of Material Adverse Facts

A “Material Adverse Fact” is defined in Wis. Stat. 452.01(5g) as an Adverse Fact that a party indicates is of such significance, or that is generally recognized by a competent licensee as being of such significance to a reasonable party, that it affects or would affect the party’s decision to enter into a contract or agreement concerning a transaction or affects or would affect the party’s decision about the terms of such a contract or agreement.

An “Adverse Fact” is defined in Wis. Stat. 452.01(1e) as a condition or occurrence that a competent licensee generally recognizes will significantly and adversely affect the value of the property, significantly reduce the structural integrity of improvements to real estate, or present a significant health risk to occupants of the property; or information that indicates that a party to a transaction is not able to or does not intend to meet his or her obligations under a contract or agreement made concerning the transaction.

Notice About Sex Offender Registry

You may obtain information about the sex offender registry and persons registered with the registry by contacting the Wisconsin Department of Corrections on the Internet at <http://www.doc.wi.gov> or by telephone at 608-240-5830.