

NAIPfefferle

FOR SALE

**Turn-Key Operation and
Ownership**

3401 E. Evergreen Drive, Appleton, WI



For additional information please contact:

Elizabeth Ringgold
Partner/Senior Commercial Real Estate Advisor
920.560.5061
elizabeth@naipfefferle.com

Nick Salm
Senior Commercial Real Estate Advisor
920.427.8714
nicksalm@naipfefferle.com

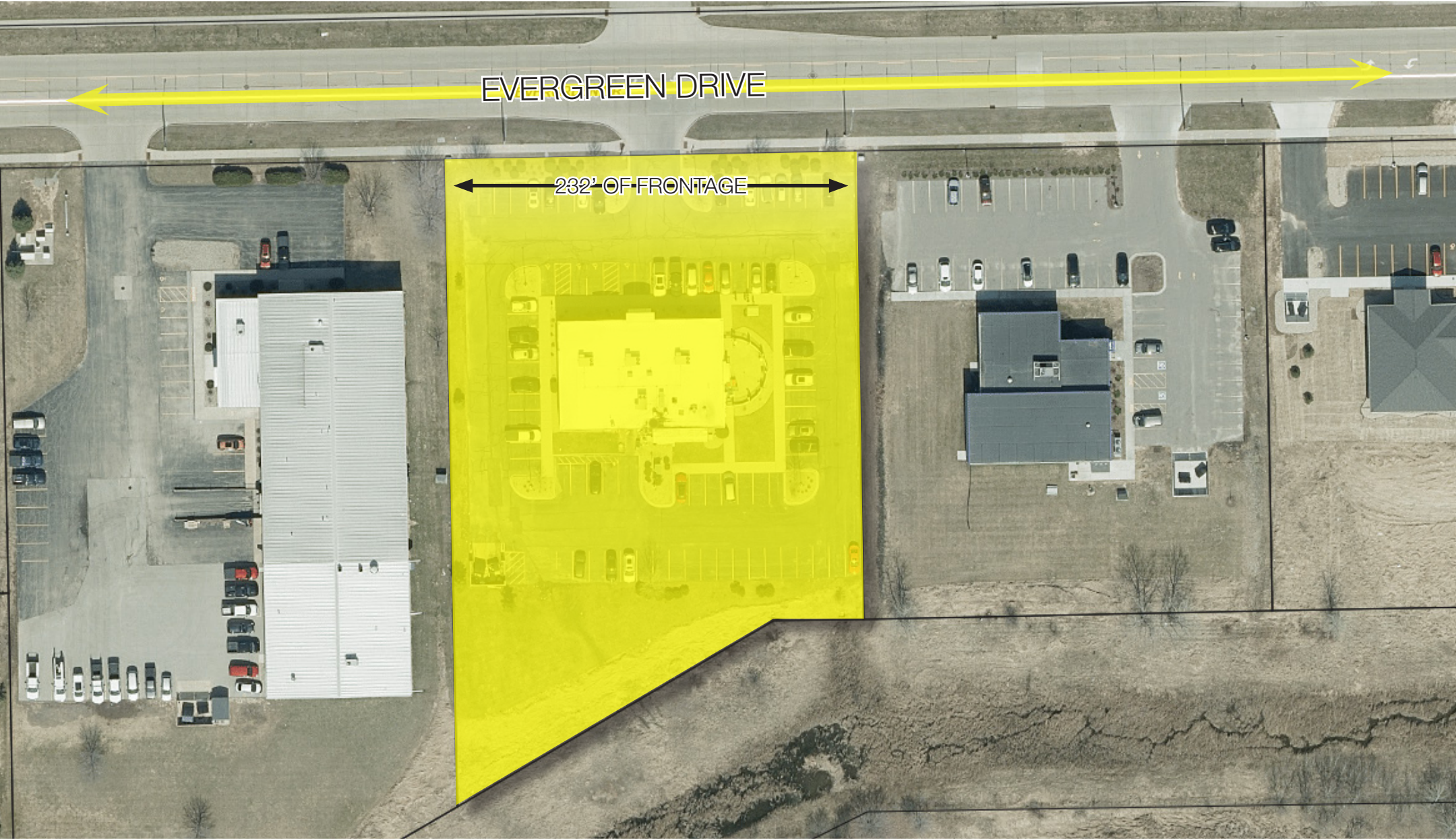
Executive Summary

Pricing and Offering Summary

NAI Pfefferle, as the exclusive advisor to the seller, is proud to present this opportunity to acquire a 5,544 SF turn-key restaurant in Appleton, WI—an excellent long-term investment!

This property is a turn-Key prime restaurant with proven sales volume for over 10 years Wisconsin. The property is primarily located on over 1.5 acres at 3401 E Evergreen Drive in rapidly growing north Appleton corridor less than 1 mile from Interstate 41 and the 441 Tri-County Expressway. The restaurant is a local favorite known for their vibrant and festive atmosphere and traditional Mexican cuisine. The large restaurant property of 5,544 SF and has a full bar, large dining space, exceptional kitchen and a beautiful patio. Spacious parking (62 stalls) and a location in the heart of business, residential and youth sports parks, this property is an exceptional opportunity for the next restaurateur!

PRICE	
Address:	3401 E. Evergreen Drive Appleton, WI 54913
Total SF:	5,544 SF
Site Area :	1.59 Acres Total
Parcel #:	311651006
Stories:	1
Year Built:	2009
Seating Capacity:	180 inside; 44 outside (patio seating)
Utilities:	City Water & Sewer
Zoning:	Commercial
Parking:	62 spaces
2024 Real Estate Taxes:	\$13,746.22
Frontage:	232' on E. Evergreen Drive



Elizabeth Ringgold
Partner/Senior Commercial Real Estate Advisor
920.560.5061
elizabeth@naipfefferle.com

Nick Salm
Senior Commercial Real Estate Advisor
920.427.8714
nicksalm@naipfefferle.com



Encircle Health

ThedaCare Medical Center-Orthopedic...

Great Northern Laminations



Cambria Hotel Appleton



Everdry Waterproofing Fox Cities



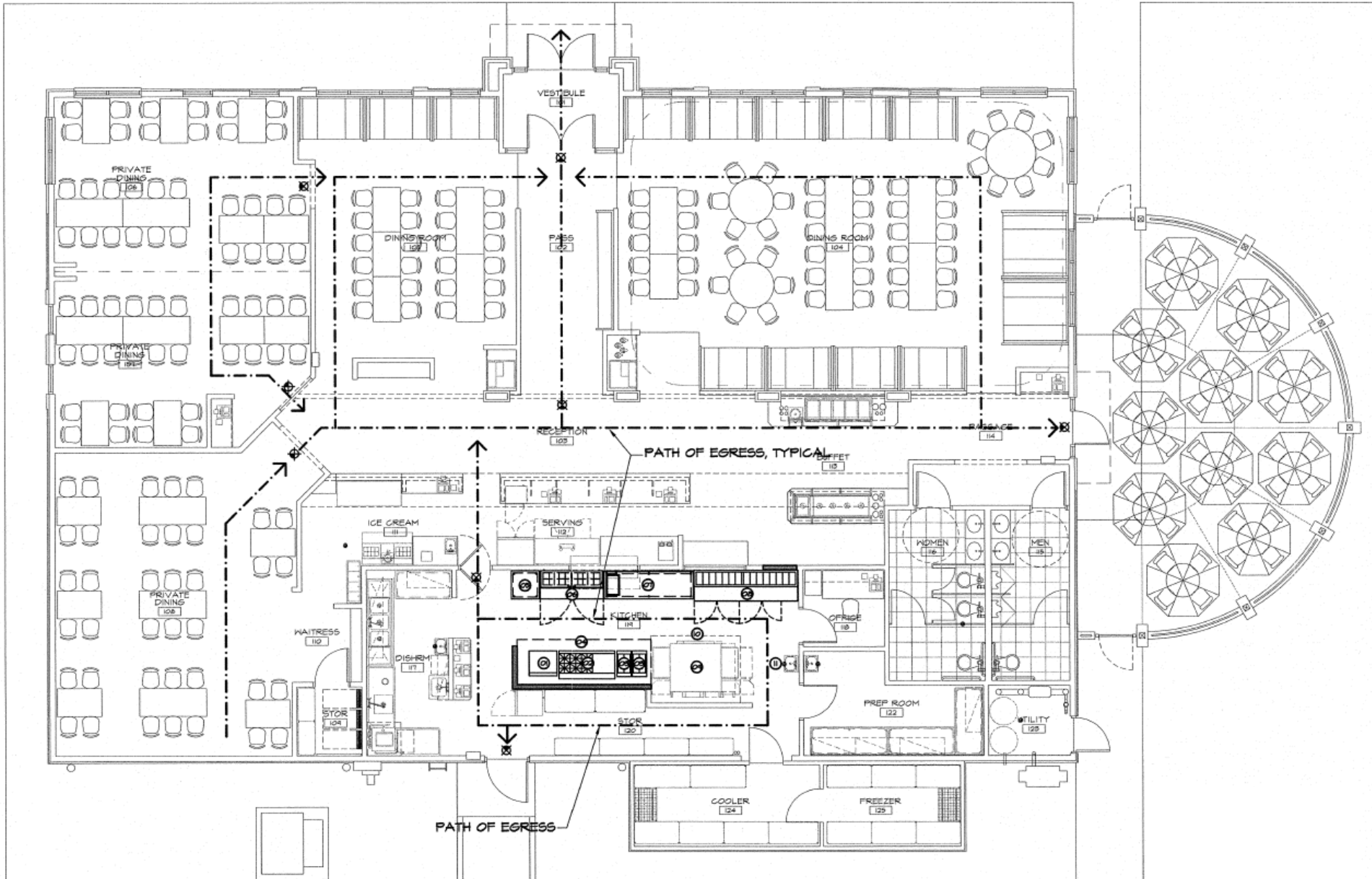
SITE

ONE MILE TO/FROM I-41

BADGER SPORTS PARK

YOUTH SPORTS COMPLEX

USA Youth Sports Complex



Elizabeth Ringgold
Partner/Senior Commercial Real Estate Advisor
920.560.5061
elizabeth@naipfefferle.com

Nick Salm
Senior Commercial Real Estate Advisor
920.427.8714
nicksalm@naipfefferle.com





Elizabeth Ringgold
Partner/Senior Commercial Real Estate Advisor
920.560.5061
elizabeth@naipfefferle.com

Nick Salm
Senior Commercial Real Estate Advisor
920.427.8714
nicksalm@naipfefferle.com



Elizabeth Ringgold
Partner/Senior Commercial Real Estate Advisor
920.560.5061
elizabeth@naipfefferle.com

Nick Salm
Senior Commercial Real Estate Advisor
920.427.8714
nicksalm@naipfefferle.com





Demographics (1, 3, 5 & 10 Mile Radius)

POPULATION



1 MILE	4,618
3 MILES:	47,003
5 MILES:	134,713
10 MILES:	236,690

EMPLOYEES



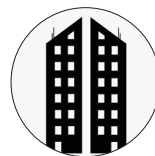
1 MILE	3,734
3 MILES:	22,632
5 MILES:	61,262
10 MILES:	118,098

AVERAGE INCOME



1 MILE	\$141,574
3 MILES:	\$114,838
5 MILES:	\$115,378
10 MILES:	\$114,954

BUSINESSES

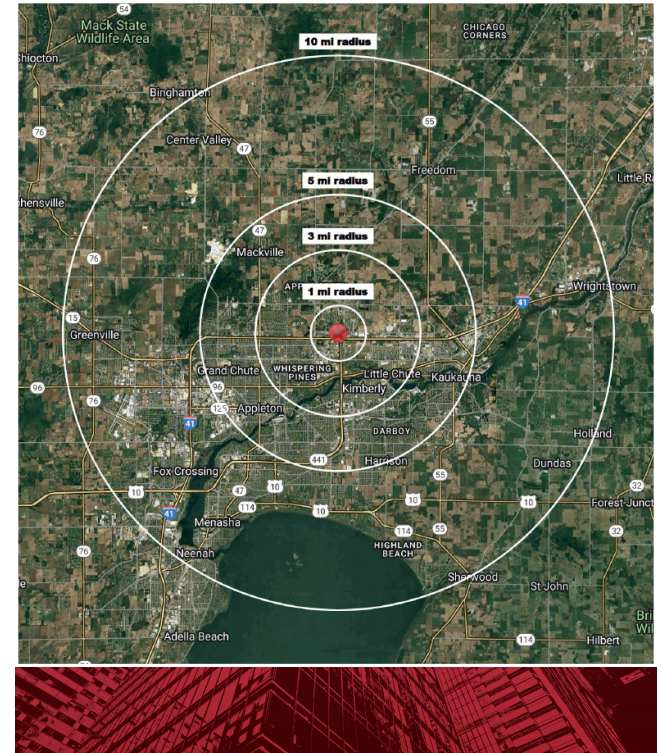


1 MILE	198
3 MILES:	1,391
5 MILES:	3,784
10 MILES:	7,023

AVERAGE HOUSEHOLDS



1 MILE	1,990
3 MILES:	19,836
5 MILES:	56,351
10 MILES:	98,423



Source: Calculated using Weighted Block Centroid from Block Groups / Regis; Sites USA

Elizabeth Ringgold
 Partner/Senior Commercial Real Estate Advisor
 920.560.5061
 elizabeth@naipfefferle.com

Nick Salm
 Senior Commercial Real Estate Advisor
 920.427.8714
 nicksalm@naipfefferle.com



For additional information please contact:



Elizabeth Ringgold
Partner/Senior Commercial Real Estate Advisor
NAI Pfefferle
920.560.5061
elizabethr@naipfefferle.com



Nick Salm
Senior Commercial Real Estate Advisor
NAI Pfefferle
920.427.8714
nicksalm@naipfefferle.com

No warranty or representation, express or implied, is made as to the accuracy of the information contained herein, and the same is submitted subject to errors, omissions, change of price, rental or other conditions, prior sale, lease or financing, or withdrawal without notice, and of any special listing conditions imposed by our principals. No warranties or representations are made as to the condition of the property or any hazards contained therein are any to be implied.

NON-RESIDENTIAL CUSTOMERS

STATE OF WISCONSIN BROKER DISCLOSURE

Wisconsin law requires all real estate licensees to give the following information about brokerage services to prospective customers.



COMMERCIAL REAL ESTATE SERVICES. WORLDWIDE

920.968.4700 | www.naipfefferle.com

Prior to negotiating on your behalf the Brokerage firm, or an agent associated with the firm, must provide you the following disclosure statement.

Disclosure to Customers

You are a customer of NAI Pfefferle (hereinafter Firm). The Firm is either an agent of another party in the transaction or a subagent of another firm that is the agent of another party in the transaction. A broker or a salesperson acting on behalf of the Firm may provide brokerage services to you. Whenever the Firm is providing brokerage services to you, the Firm and its brokers and salespersons (hereinafter Agents) owe you, the customer, the following duties:

- The duty to provide brokerage services to you fairly and honestly.
- The duty to exercise reasonable skill and care in providing brokerage services to you.
- The duty to provide you with accurate information about market conditions within a reasonable time if you request it, unless disclosure of the information is prohibited by law.
- The duty to disclose to you in writing certain Material Adverse Facts about a Property, unless disclosure of the information is prohibited by law.
- The duty to protect your confidentiality. Unless the law requires it, the Firm and its Agents will not disclose your confidential information or the confidential information of other parties.
- The duty to safeguard trust funds and other property held by the Firm or its Agents.
- The duty, when negotiating, to present contract proposals in an objective and unbiased manner and disclose the advantages and disadvantages of the proposals.

Please review this information carefully. An Agent of the Firm can answer your questions about brokerage services, but if you need legal advice, tax advice, or a professional home inspection, contact an attorney, tax advisor, or home inspector. This disclosure is required by section 452.135 of the Wisconsin statutes and is for information only. It is a plain-language summary of the duties owed to a customer under section 452.133(1) of the Wisconsin statutes.

Confidentiality Notice to Customers

The Firm and its Agents will keep confidential any information given to the Firm or its Agents in confidence, or any information obtained by the Firm or its Agents that a reasonable person would want to be kept confidential, unless the information must be disclosed by law or you authorize the Firm to disclose particular information. The Firm and its Agents shall continue to keep the information confidential after the Firm is no longer providing brokerage services to you.

The following information is required to be disclosed by law:

1. Material Adverse Facts, as defined in section 452.01(5g) of the Wisconsin Statutes (see definition below).
2. Any facts known by the Firm or its Agents that contradict any information included in a written inspection report on the property or real estate that is the subject of the transaction.

Information shown herein was provided by Seller/Lessor and/or third parties and has not been verified by the broker unless otherwise indicated.

To ensure that the Firm and its Agents are aware of what specific information you consider confidential, you may list that information below or provide that information to the Firm or its Agents by other means. At a later time, you may also provide the Firm or its Agents with other information you consider to be confidential.

CONFIDENTIAL INFORMATION

NON-CONFIDENTIAL INFORMATION

(the following information may be disclosed to the Firm and its Agents)

(Insert information you authorize to be disclosed, such as financial qualification information.)

Definition of Material Adverse Facts

A “Material Adverse Fact” is defined in Wis. Stat. 452.01(5g) as an Adverse Fact that a party indicates is of such significance, or that is generally recognized by a competent licensee as being of such significance to a reasonable party, that it affects or would affect the party’s decision to enter into a contract or agreement concerning a transaction or affects or would affect the party’s decision about the terms of such a contract or agreement.

An “Adverse Fact” is defined in Wis. Stat. 452.01(1e) as a condition or occurrence that a competent licensee generally recognizes will significantly and adversely affect the value of the property, significantly reduce the structural integrity of improvements to real estate, or present a significant health risk to occupants of the property; or information that indicates that a party to a transaction is not able to or does not intend to meet his or her obligations under a contract or agreement made concerning the transaction.

Notice About Sex Offender Registry

You may obtain information about the sex offender registry and persons registered with the registry by contacting the Wisconsin Department of Corrections on the Internet at <http://www.doc.wi.gov> or by telephone at 608-240-5830.

No representation is made as to the legal validity of any provision or the adequacy of any provision in any specific transaction.