



FOR LEASE

RENOVATED FIRST-FLOOR OFFICE

IN DOWNTOWN WEST CHESTER, PA



105 E EVANS STREET | WEST CHESTER, PA 19380

EVANS BUILDING FIRST-FLOOR OFFICE SPACE

PROPERTY HIGHLIGHTS

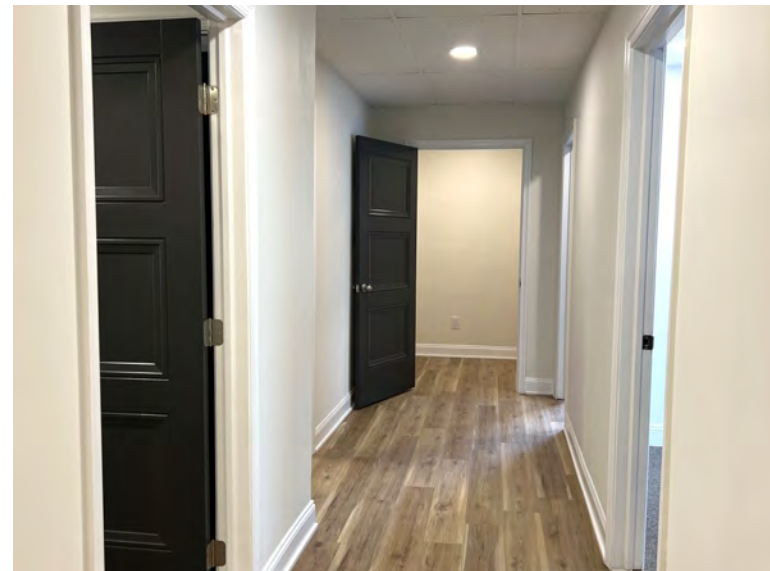
- Newly Renovated 1,340 SF Professional Office Suite
- (3) Large Private Offices, Conference Room, Kitchenette, & Private Powder Room
- Updated Modern Finishes & New LVP Flooring Throughout
- Abundant Natural Light
- Ample Closet Storage
- (3) On-Site Parking Spaces Included
- Located in the Heart of West Chester Borough
- Walking Distance to 100+ Retailers / Restaurants
- One Block from Chestnut Street Garage for Additional Parking



**LEASE RATE: \$2,825 PER MONTH
PLUS UTILITIES**

EVANS BUILDING FIRST-FLOOR OFFICE SPACE

INTERIOR PHOTOS



EVANS BUILDING FIRST-FLOOR OFFICE SPACE

EVANS STREET OFFICE COMPLEX



MEET THE NEIGHBORS



WEST CHESTER PUBLIC PARKING





@westchesterviews

West Chester

pennsylvania

A college town yes, but West Chester is also the historic county seat and a vibrant part of the Brandywine River Valley.

With more than 83 shops and 59 restaurants, West Chester can keep you busy for an entire day. Enjoy historic walking tours at your leisure.

West Chester was named to the top ten "Best Small Town Downtowns in the United States" by Bert Sperling and Peter Stander, authors of Best Places to Raise a Family.

Hosting over 100 events annually, West Chester brings thousands of visitors and residents to the area on a regular basis.



JAKE JEWELL

(484) 887-8202 | Ext. 105

JJewell@PillarRealEstateAdvisors.com

RYAN DODDS

(484) 887-8202 | Ext. 104

RDodds@PillarRealEstateAdvisors.com

The information contained in this document has been obtained from sources believed reliable. While Pillar Real Estate Advisors, LLC does not doubt its accuracy, Pillar Real Estate Advisors, LLC, has not verified it and makes no guarantee, warranty or representation about it. It is your responsibility to independently confirm its accuracy and completeness. Any projections, opinions, assumptions or estimates used are for example only and do not represent the current or future performance of the property. The value of this transaction to you depends on several factors which should be evaluated by your tax, financial and legal advisors to determine to your satisfaction the suitability of the property for your needs. Photos herein are the property of their respective owners and use of these images without the express written consent of the owner is prohibited.