

16542 N. MAY AVENUE  
EDMOND, OK 73012

Office Space For Lease

Lease Price: \$22.00/SF Modified Gross

Suite 100: 2,025 SF MOL

Suite 110: 2,025 SF MOL



**NAIRED**

COMMERCIAL  
REAL ESTATE

**NAIRED**

405.840.0600  
NAIRED.COM

MATTHEW PIERCE  
405.203.3636  
MATT@NAIRED.COM

CADE FLESNER  
760.889.2305  
CADE@NAIRED.COM



## PROPERTY HIGHLIGHTS

- Tenant Pays Utilities & Janitorial
- Newly Developed & Interior Finishes
- 6 Offices (1 Conference Room)
- 2 ADA Compliant Restrooms
- Break Room
- Mop Closet
- Reception Area
- Storage Area
- Building Total: 4,050 SF on 0.54 Acres MOL

## LOCATION HIGHLIGHTS

- Located in the NE corner of N. May Ave & NW 164th Street
- Quick Access from Highway 74
- Ample Retail, Banking, and Restaurants Nearby
- Located in NW OKC's Domain Office Park

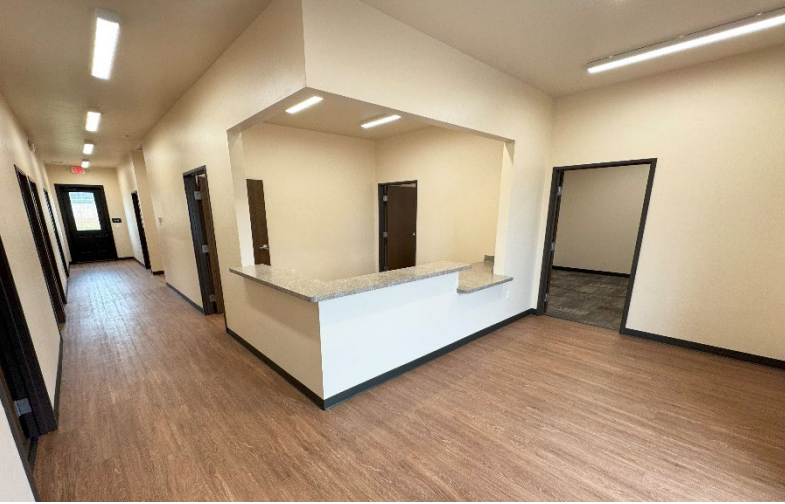
**NAIRED**

**405.840.0600**  
**NAIRED.COM**

**MATTHEW PIERCE**  
405.203.3636  
MATT@NAIRED.COM

**CADE FLESNER**  
760.889.2305  
CADE@NAIRED.COM





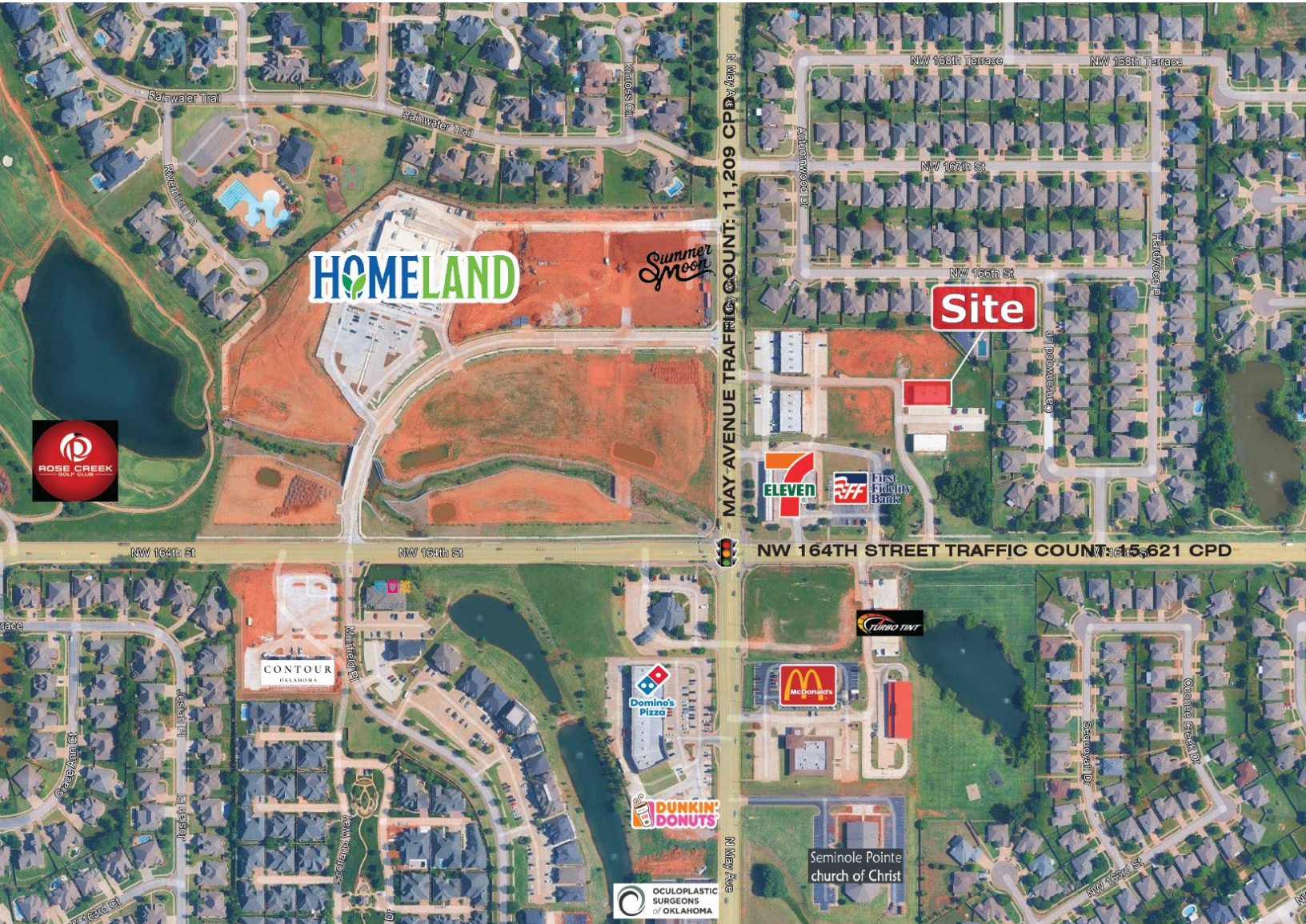
**NAIRED**

**405.840.0600**  
**NAIRED.COM**

**MATTHEW PIERCE**  
405.203.3636  
MATT@NAIRED.COM

**CADE FLESNER**  
760.889.2305  
CADE@NAIRED.COM





## DEMOGRAPHICS

	1 MILE	3 MILE	5 MILE
POPULATION	9,805	72,035	157,235
AVERAGE HOUSEHOLD INCOME	\$133,807	\$112,791	\$98,224
TOTAL HOUSEHOLDS	3,583	28,448	65,535

**NAIRED**

**405.840.0600**  
NAIRED.COM

FOLLOW US @NAIRED\_CRE



No warranty or representation, express or implied, is made as to the accuracy of the information contained herein, and the same is submitted subject to errors, omissions, change of price, rental or other conditions, prior to sale, lease, or financing, or withdrawal without notice, and of any special listing conditions imposed by our principals no warranties or representations are made as to the condition of the property or any hazards contained therein are any to be implied.