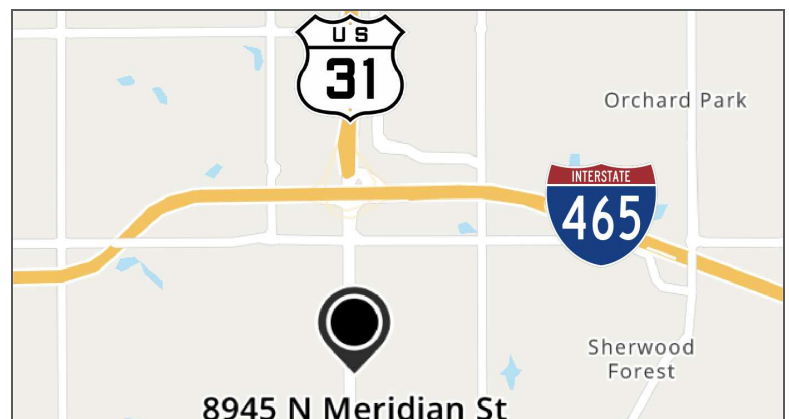


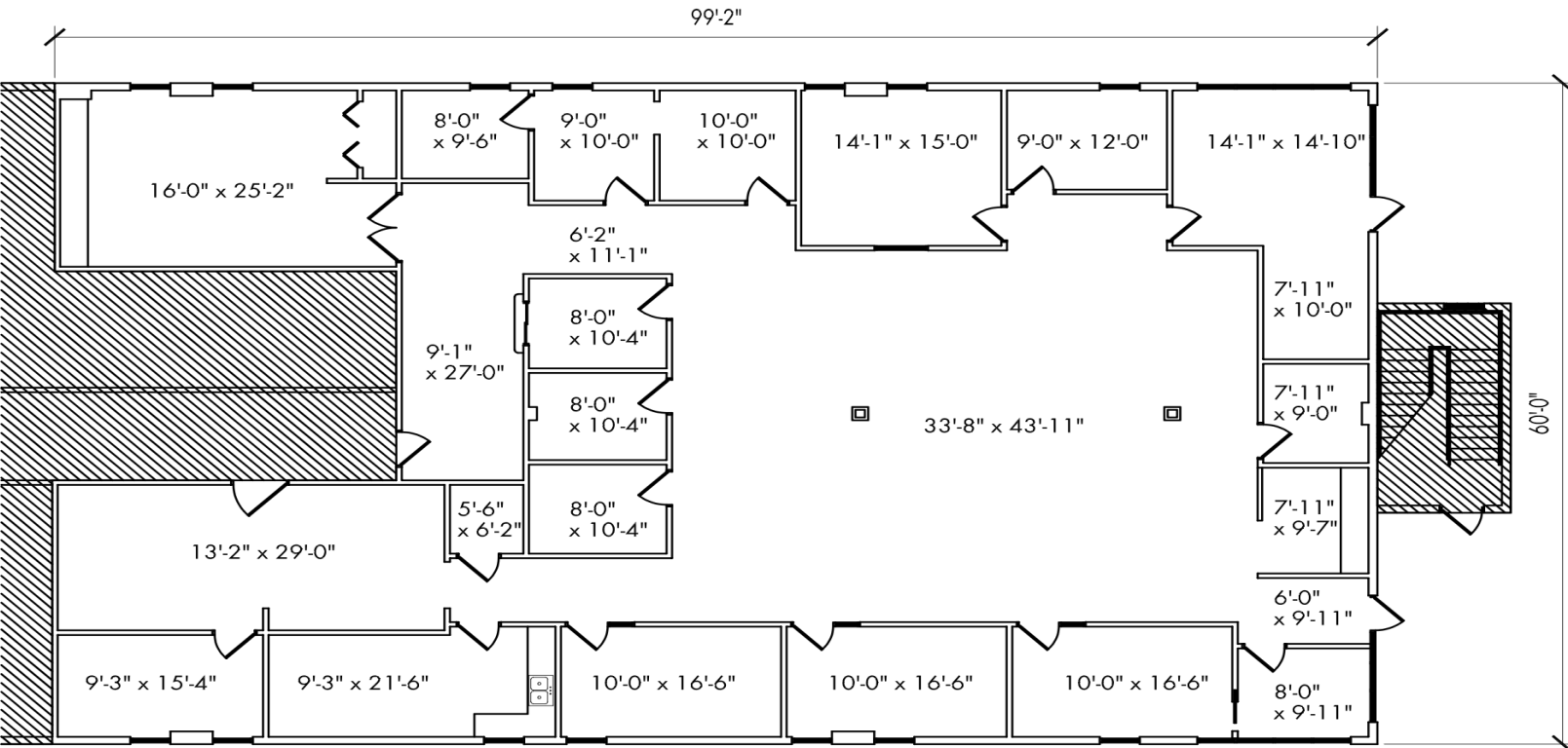


FIRST FLOOR & LAKESIDE VIEWS AT WATERPLACE OFFICE PARK

For Lease
8945 N Meridian St
Indianapolis, IN 46260



Executive Summary



OFFERING SUMMARY

Lease Rate: \$19.95 SF

Lease Type: Full Service

Building Size: 25,345 SF

Available SF: 2,967 - 5,990 SF

PROPERTY OVERVIEW

Discover a unique leasing opportunity in a first-floor office space, ideally located in a vibrant corridor with top tier food options just steps away. This offering comes with serene pond views and a backdrop of mature wooded areas, creating an inspiring and peaceful work environment.

PROPERTY HIGHLIGHTS

- Private entrances for easy client and employee access
- Flexible floor plan
- Quiet setting with calming outdoor patio overlooking the water
- Prominent signage opportunities available
- Landlord willing to invest in buildout to deliver a high quality and customized office space

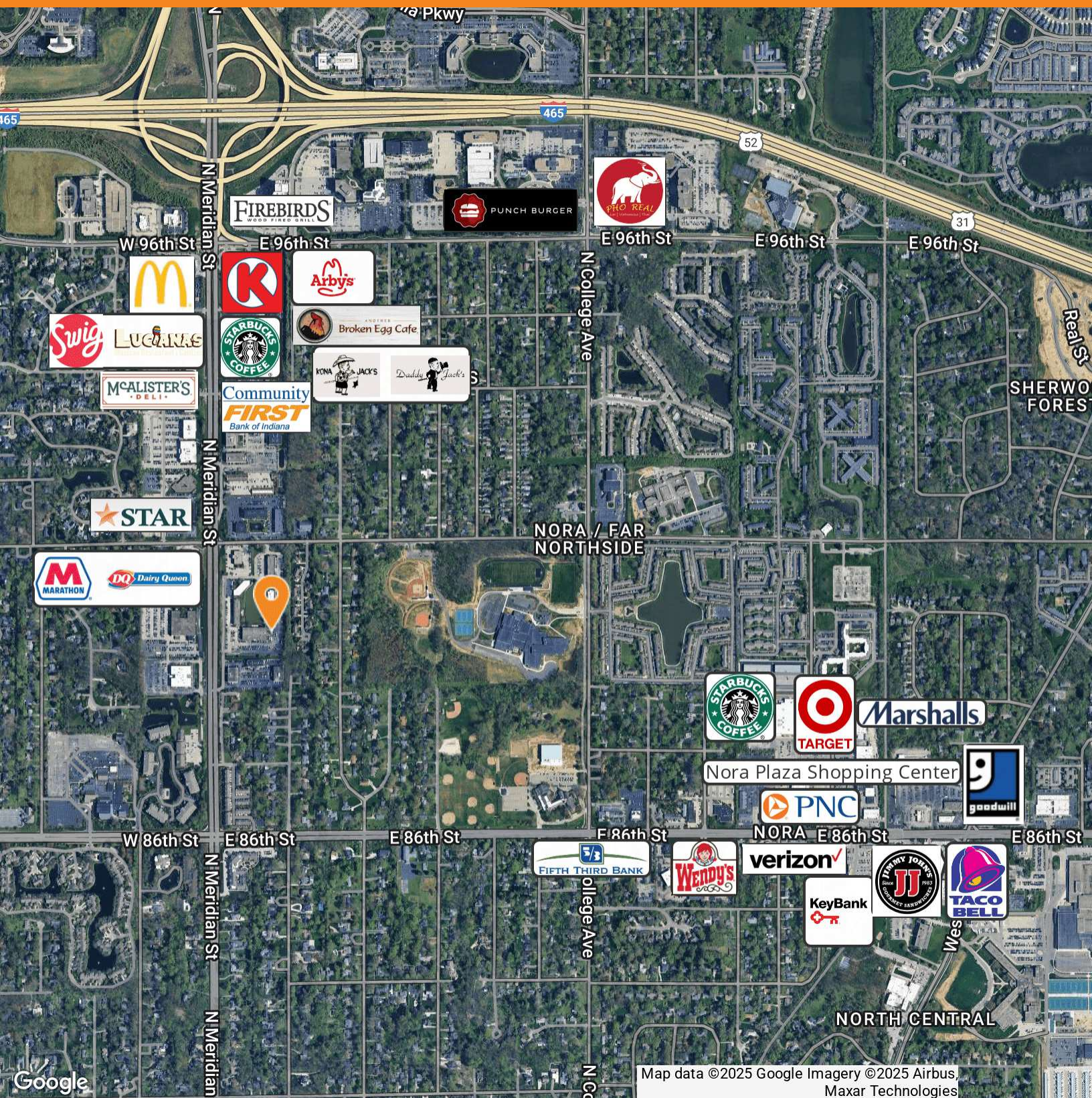
AVAILABLE SPACES	SPACE SIZE	DATE AVAILABLE
Suite 100	2,967 SF	Immediately
Suite 150	3,023 SF	Immediately
Suites 100 & 150	5,990 SF	Immediately

Waterplace Park

8945 N Meridian St Indianapolis, IN 46260

FOR LEASE

Retailer Map



Joshua D. Abrams, CCIM | 317.324.1613 | Joshua@halakar.com

Liz DeKoninck | 317.536.0093 | liz@halakar.com



www.Halakar.com